



# VOLUNTARY RECALL CAMPAIGN

Classification: ST22-001B	Reference: NTB22-079B	Date: July 25, 2023
------------------------------	--------------------------	------------------------

## VOLUNTARY SAFETY RECALL CAMPAIGN 2021 KICKS AND 2021 VERSA; STEERING COLUMN

This bulletin has been amended. See AMENDMENT HISTORY on the last page.  
Please discard previous versions of this bulletin.

**CAMPAIGN ID #:** PMA25, PMA26  
**APPLIED VEHICLES:** 2021 Kicks (P15)  
2021 Versa (N18)

**Check Service COMM or Dealer Business Systems (DBS)  
National Service History to confirm campaign eligibility.**

### INTRODUCTION

Nissan is conducting these voluntary safety recall campaigns, on certain specific model year 2021 Kicks and 2021 Versa vehicles, to inspect and, if necessary, replace the steering column. This service will be performed at no charge to the customer for parts or labor.

### IDENTIFICATION NUMBER

Nissan has assigned identification numbers PMA25 and PMA26 to these campaigns. These numbers must appear on all communication and documentation of any nature dealing with these campaigns.

### DEALER RESPONSIBILITY

It is the dealer's responsibility to check Service COMM or Dealer Business Systems (DBS) National Service History for the campaign status on each vehicle falling within the range of this voluntary safety recall which for any reason enters the service department. This includes vehicles purchased from private parties or presented by transient (tourist) owners and vehicles in a dealer's inventory. **Federal law requires that new vehicles in dealer inventory which are the subject of a safety recall must be corrected prior to sale. Failure to do so can result in civil penalties by the National Highway Traffic Safety Administration.** While federal law applies only to new vehicles, Nissan strongly encourages dealers to correct any used vehicles in their inventory before they are retailed.

Bulletins are intended for use by qualified technicians, not 'do-it-yourselfers'. Qualified technicians are properly trained individuals who have the equipment, tools, safety instruction, and know-how to do a job properly and safely. **NOTE:** If you believe that a described condition may apply to a particular vehicle, DO NOT assume that it does. See your Nissan dealer to determine if this applies to your vehicle.

## REQUIRED TOOLS

- A white crayon will be required to perform this action (Figure 1).
- Crayons are widely available and can be obtained from local or online retailers.



Figure 1

## SERVICE PROCEDURE

### WARNING

**To avoid the risk of serious personal injury or death, be sure to observe the following:**

- Before servicing the SRS, turn the ignition OFF, disconnect both battery terminals and then wait at least 3 minutes.
- Always work from the side of the driver (LH) side knee air bag module. Do not work in front of it.
- Do not use air tools or electric tools for servicing the LH side knee air bag module.
- Always place the LH side knee air bag module with the pad side facing upward.
- Do not cause impact to the LH side knee air bag module by dropping, etc.
- Replace the LH side knee air bag module if it has been dropped or sustained an impact.
- Do not allow oil, grease, detergent, or water to come in contact with the LH side knee air bag module.
- Do not insert any foreign objects (screwdriver, etc.) into the LH side knee air bag module.
- Do not disassemble the LH side knee air bag module.
- Do not expose the LH side knee air bag module to temperatures exceeding 93°C (199°F).

## EPS Control Unit Data Saving

### **⚠CAUTION**

To avoid damage to the EPS control unit during replacement, the EPS control unit vehicle specifications must be saved from the original EPS control unit and written to the replacement EPS control unit using Consult.

1. Turn the ignition ON with the engine OFF.
2. Turn the hazard warning lights ON.
3. Connect the VI to the vehicle.
4. Start CONSULT-III plus on the CONSULT PC.
5. If prompted, select **USA/CANADA Dealers** from the drop-down menu, and then select **OK**.
6. Login using your NNAnet credentials.

**IMPORTANT:** If not prompted to enter your username and password, the CONSULT PC may not be connected to Wi-Fi. Close C-III plus, confirm the CONSULT PC is connected to Wi-Fi, and then reopen C-III plus.

7. Wait for the VI to be recognized (Figure 2).
  - The serial number will be displayed when the VI is recognized.
8. Select **Re/programming, Configuration**.

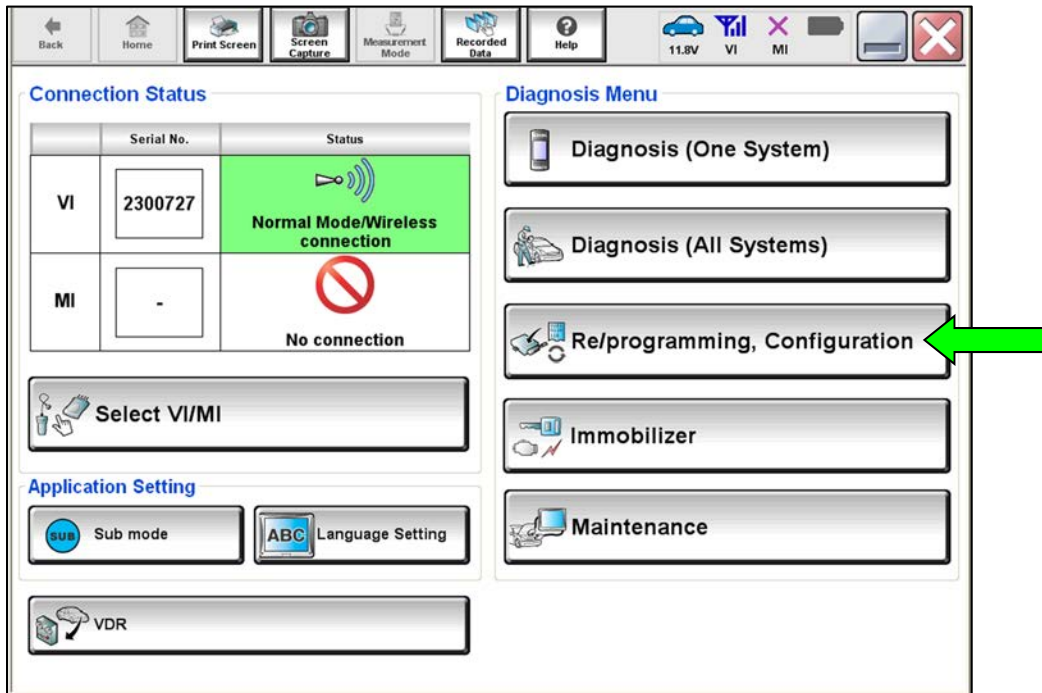


Figure 2

9. Check the box to confirm the precaution instructions have been read, and then select **Next**.
 

**HINT:** Use the arrows (if needed) to view and read all precautions.

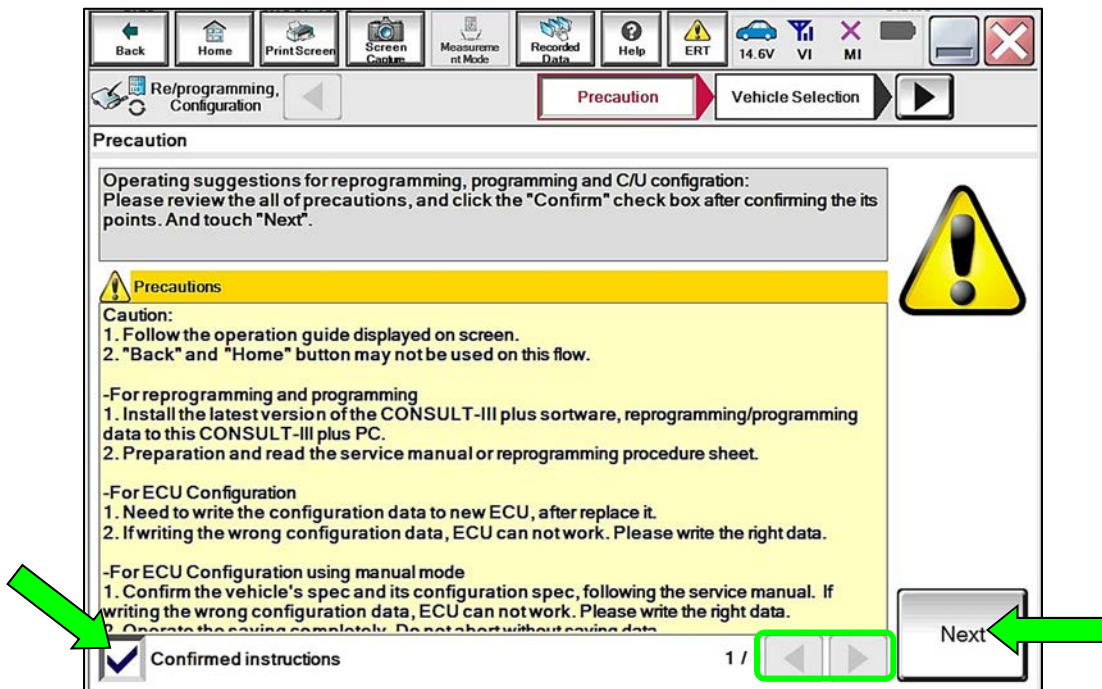


Figure 3

10. Select Automatic Selection(VIN).

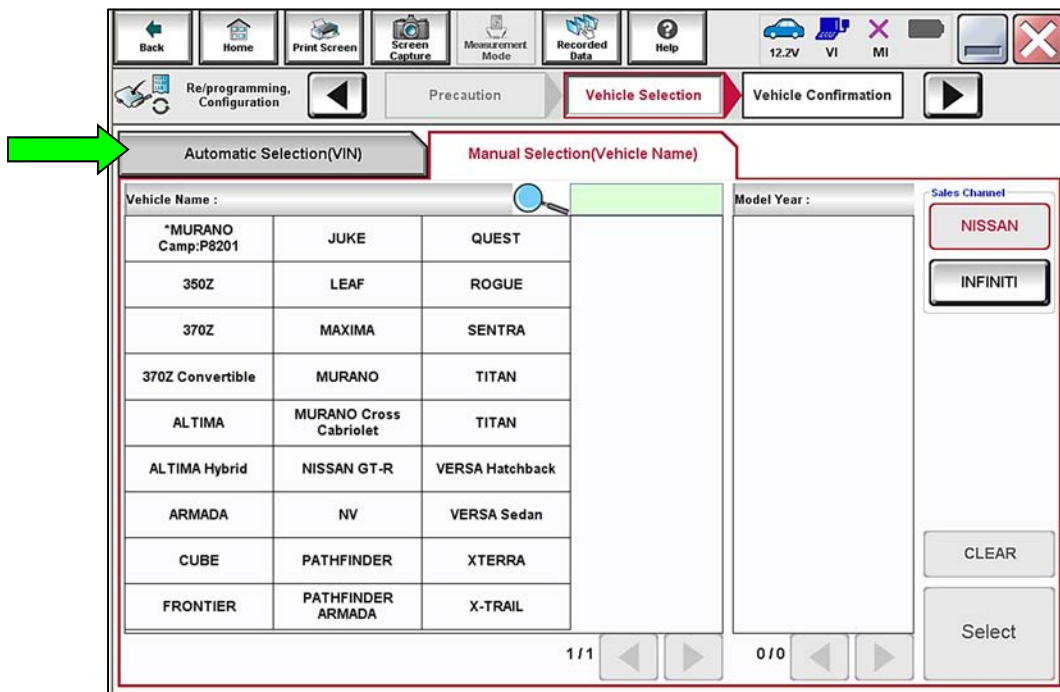


Figure 4

11. Confirm the VIN is correct for the vehicle, and then select **Confirm**.

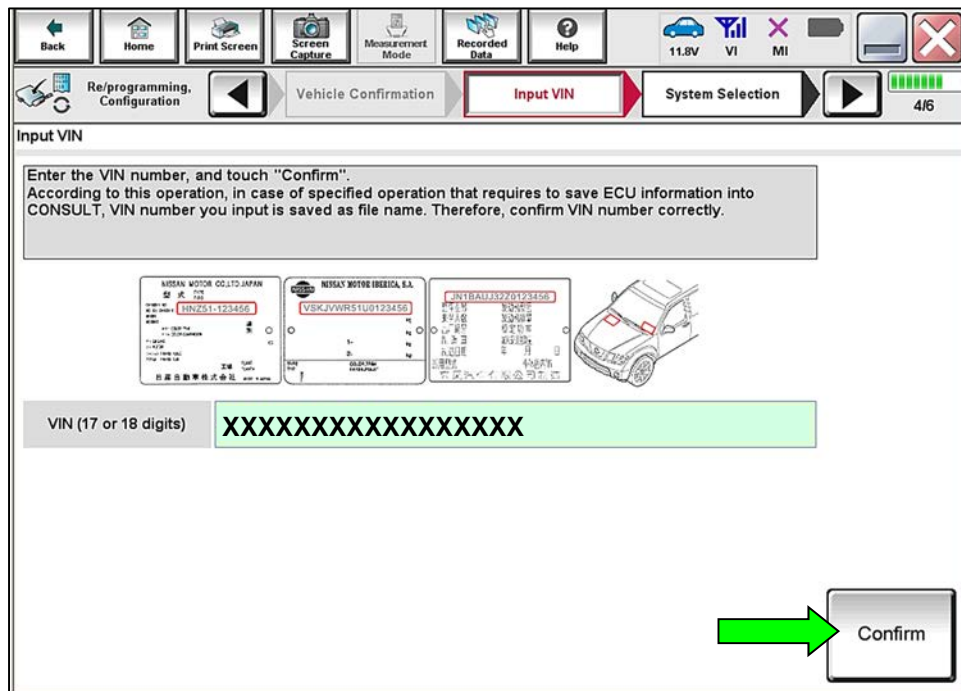


Figure 5

12. Select **EPS/DAST 3**.

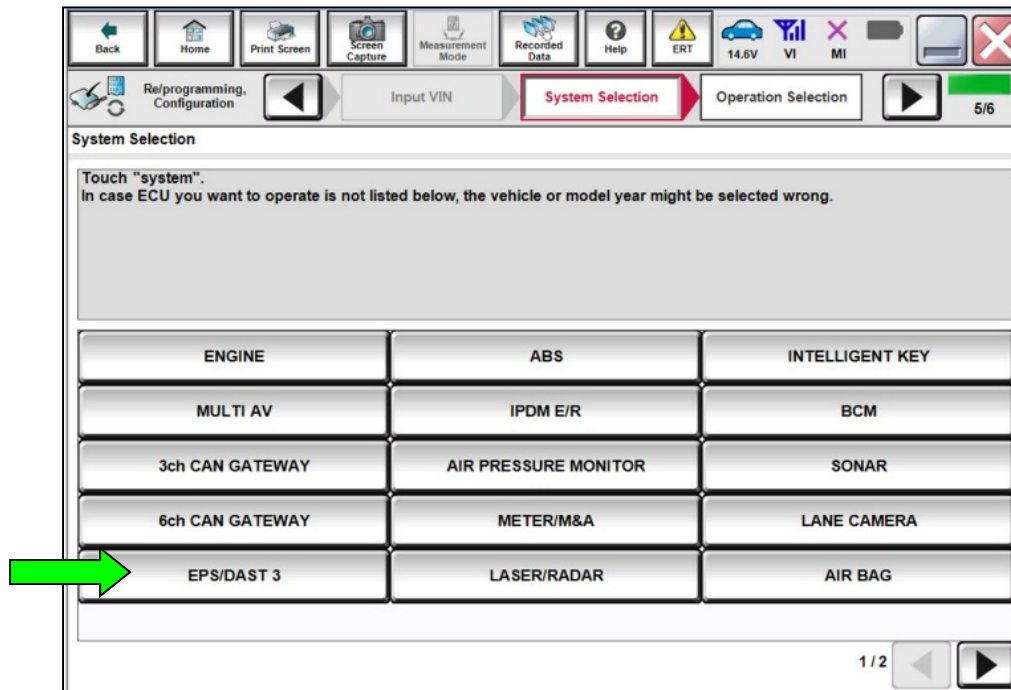


Figure 6

13. Select **Before ECU Replacement**.

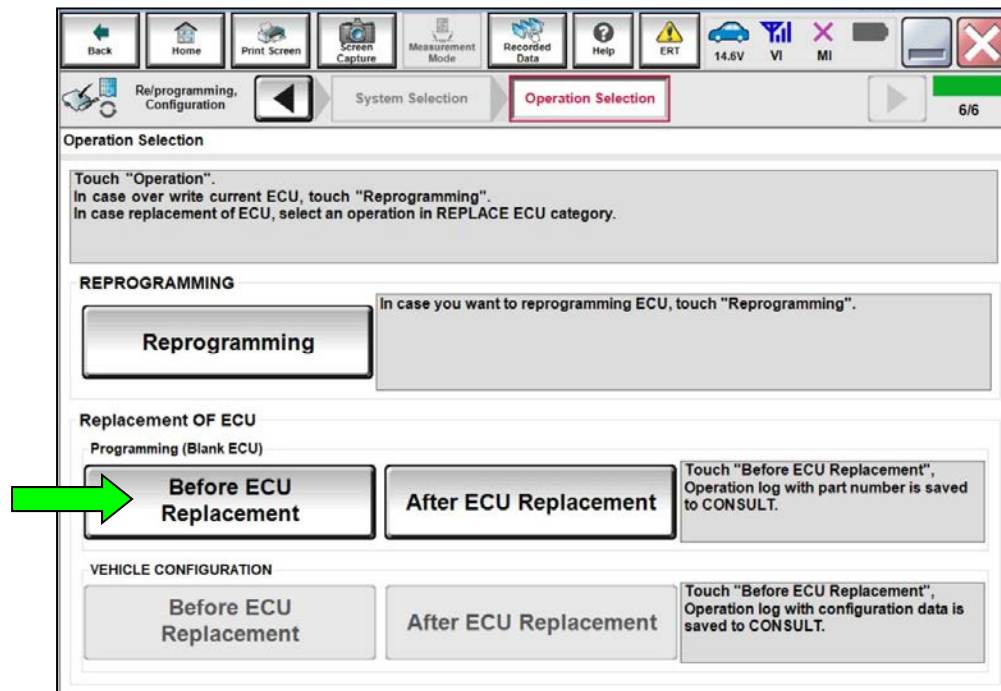


Figure 7

- On the **Save ECU Data** screen, write the EPS **Part Number** on the repair order, and then select **Save**.

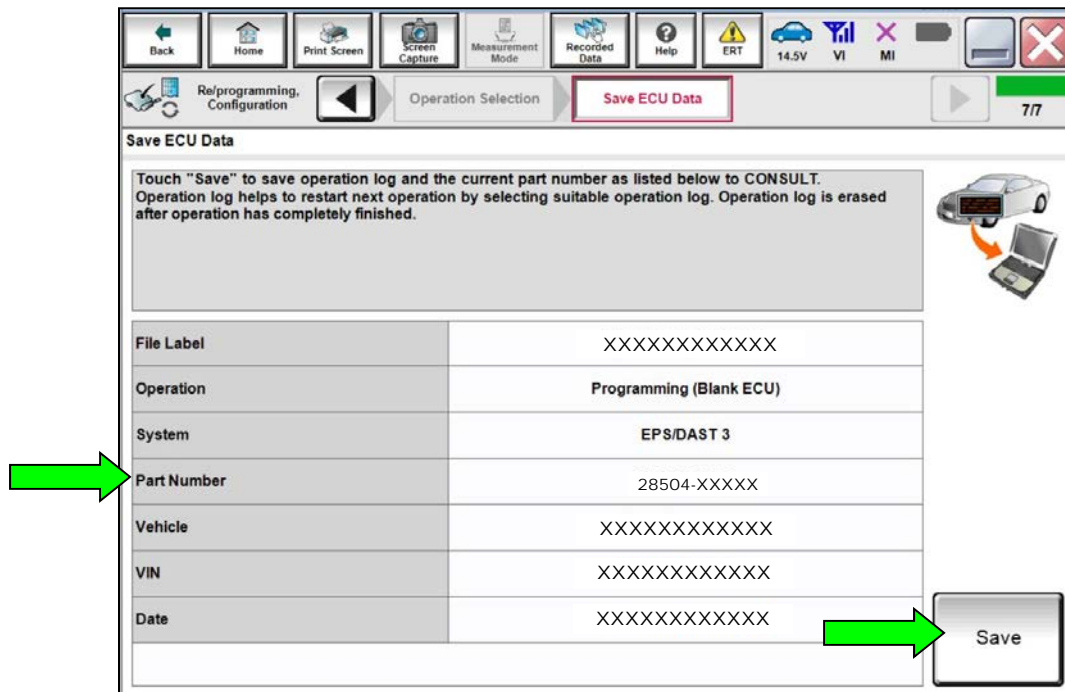


Figure 8

- Select **Next**.

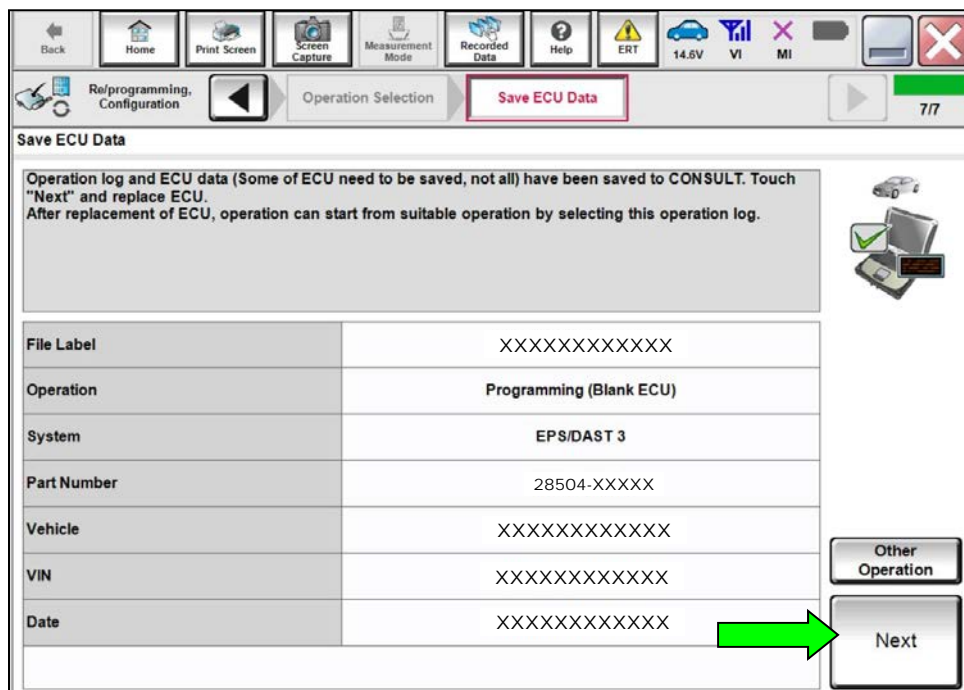


Figure 9



## Vehicle Disassembly

16. Write down the radio settings.

Presets	1	2	3	4	5	6
AM						
FM 1						
FM 2						
XM 1						
XM 2						
XM 3						
Bass	Treble		Balance	Fade	Speed Sen. Vol.	

17. If equipped, write down the customer settings for the ATC (Automatic Temperature Control) system.

18. Turn the ignition OFF.

19. Disconnect the negative and positive battery terminals, negative battery terminal first.

- Wait at least 3 minutes.

20. Remove the driver (LH) side knee air bag module.

- For Kicks, refer to the ESM: **RESTRAINTS > SRS AIRBAG > REMOVAL AND INSTALLATION > LEFT KNEE AIR BAG MODULE > Removal and Installation**
- For Versa, refer to the ESM: **RESTRAINTS > SRS AIRBAG > REMOVAL AND INSTALLATION > KNEE AIR BAG MODULE LH > Removal and Installation**

**⚠ WARNING**

- To avoid serious personal injury and/or death in the event of unintended deployment, always place the LH side knee air bag module with the pad side facing upward.
- To prevent damage to the LH side knee air bag module, place it in a safe place.
- To avoid personal injury, do not reuse the LH side knee air bag module bolts.

## Steering Column Inspection

21. Locate the steering column torque sensor (Figure 10).

- The torque sensor lot code is located on the back side of the torque sensor and is visible by looking upward at the torque sensor.

**IMPORTANT:** DO NOT remove or disconnect the steering column torque sensor.

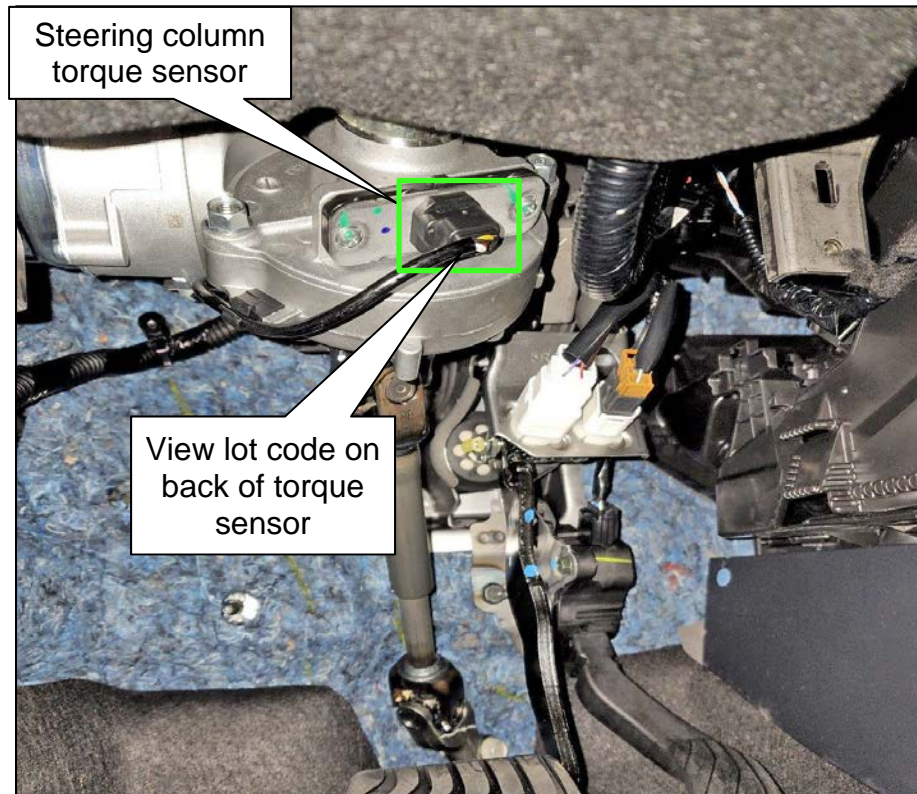


Figure 10

22. Highlight the lot code of the steering column torque sensor.

- Using a white crayon, with light pressure, rub the crayon over the lot code until the lot code is legible.

### **NOTICE**

To avoid damage to the torque sensor, the torque sensor harness, and the torque sensor harness connector, do NOT apply force when applying the crayon markings.

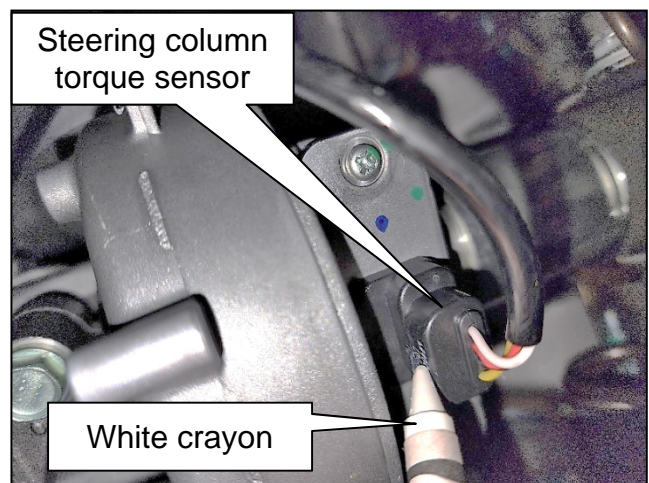


Figure 11

23. Write down the first five (5) characters of the lower line of the lot code on the repair order in the Technician Comments section (Figure 12).

**HINT:** Taking a photo of the lot code with a cell phone can assist with reading the lot code.

- After documenting the lot code, using a dry shop rag, wipe the crayon markings off of the steering column torque sensor with light pressure.

**NOTICE**

To avoid damage to the torque sensor, the torque sensor harness, and the torque sensor harness connector, do NOT apply force when wiping the crayon markings off.

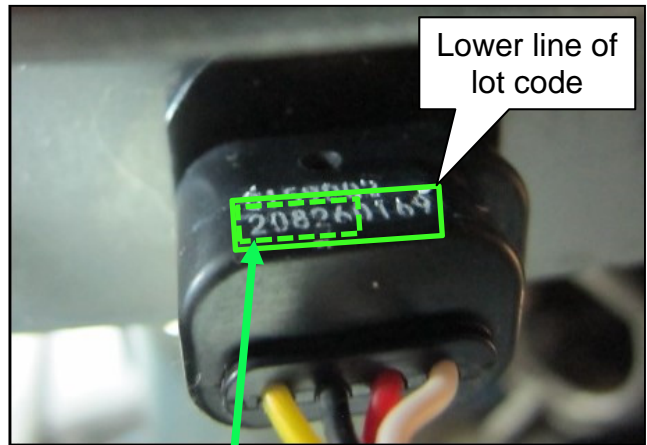


Figure 12

Breakdown of first 5 characters of Lower Lot Code: YYMDD  
 YY = 20 = 2020  
 M = 8 Month = August  
 DD = Day = 26

Figure 13

24. Review the first five (5) characters of the lot code obtained in step 23 and compare to the **LOT CODES** listed in **Table A**.

**Table A**

MODEL	MODEL YEAR	LOT CODES
Kicks, Versa	2021	21624, 21625, 21628, 21705, 21708, 21709

- If the first five (5) characters of the lot code matches one of the sets of numbers in **Table A**, replace the steering column assembly.
  - Refer to the ESM: **STEERING > STEERING SYSTEM > REMOVAL AND INSTALLATION > STEERING COLUMN > Removal and Installation**
    - Continue to step 25 on page 12.
- If the first five (5) characters of the lot code do NOT match one of the sets of numbers in **Table A**, steering column replacement is not necessary.
  - Continue to step 25 on page 12.

## Vehicle Reassembly

25. Reassemble the vehicle in the reverse order.
  - Replace the LH side knee air bag module bolts with the bolts listed in **PARTS INFORMATION** on the last page.
    - LH side knee air bag module bolt torque: 10.8 N•m (1.1 kg-m, **8 ft-lb**)
26. Connect both battery terminals, negative battery terminal last.
  - Battery terminal bolt torque: 5.5 N•m (0.6 kg-m, **49 in-lb**)
27. Perform **ADDITIONAL SERVICE WHEN REMOVING BATTERY NEGATIVE TERMINAL**.
  - Refer to the ESM: **ELECTRICAL & POWER CONTROL > POWER SUPPLY, GROUND & CIRCUIT ELEMENTS > BASIC INSPECTION > INSPECTION AND ADJUSTMENT > ADDITIONAL SERVICE WHEN REMOVING BATTERY NEGATIVE TERMINAL**
    - If the steering column was replaced, continue to step 28.
    - If the steering column was not replaced, skip to **CLAIMS INFORMATION** on the last page.

## EPS Control Unit Data Writing

28. Turn the ignition ON with the engine OFF.
29. Connect the VI to the vehicle, if not currently connected.
30. Start CONSULT-III plus on the CONSULT PC.
31. If prompted, select **USA/CANADA Dealers** from the drop-down menu, and then select **OK**.
32. Login using your NNAnet credentials.

**IMPORTANT:** If not prompted to enter your username and password, the CONSULT PC may not be connected to Wi-Fi. Close C-III plus, confirm the CONSULT PC is connected to Wi-Fi, and then reopen C-III plus.

33. Wait for the VI to be recognized.
34. Select **Re/programming, Configuration**.

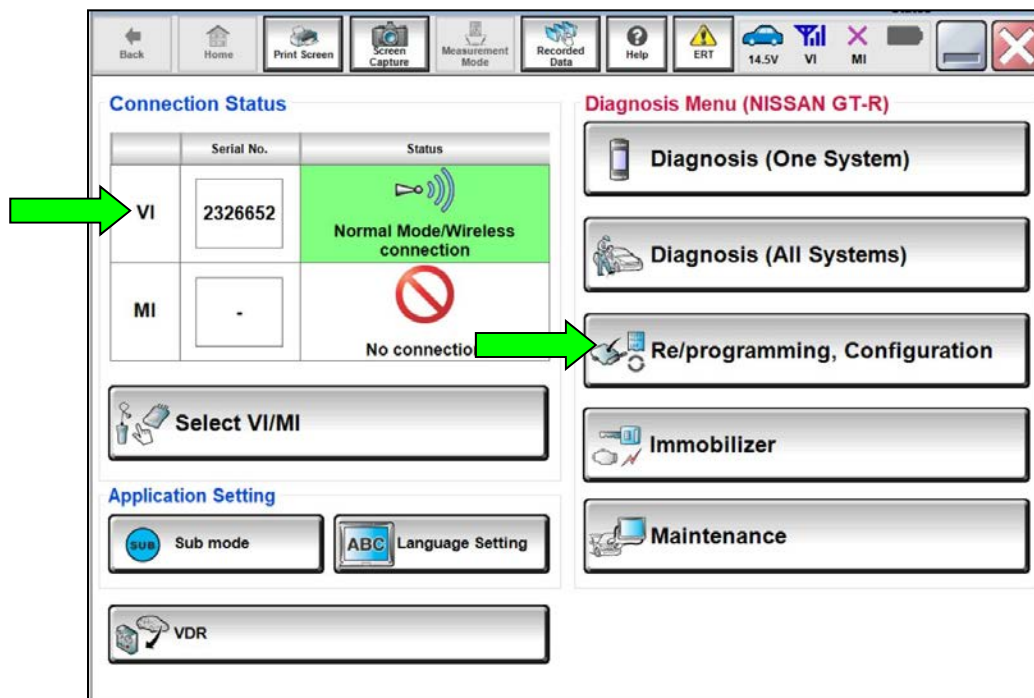


Figure 14

35. Check the box to confirm the precaution instructions have been read, and then select **Next**.

**HINT:** Use the arrows (if needed) to view and read all precautions.

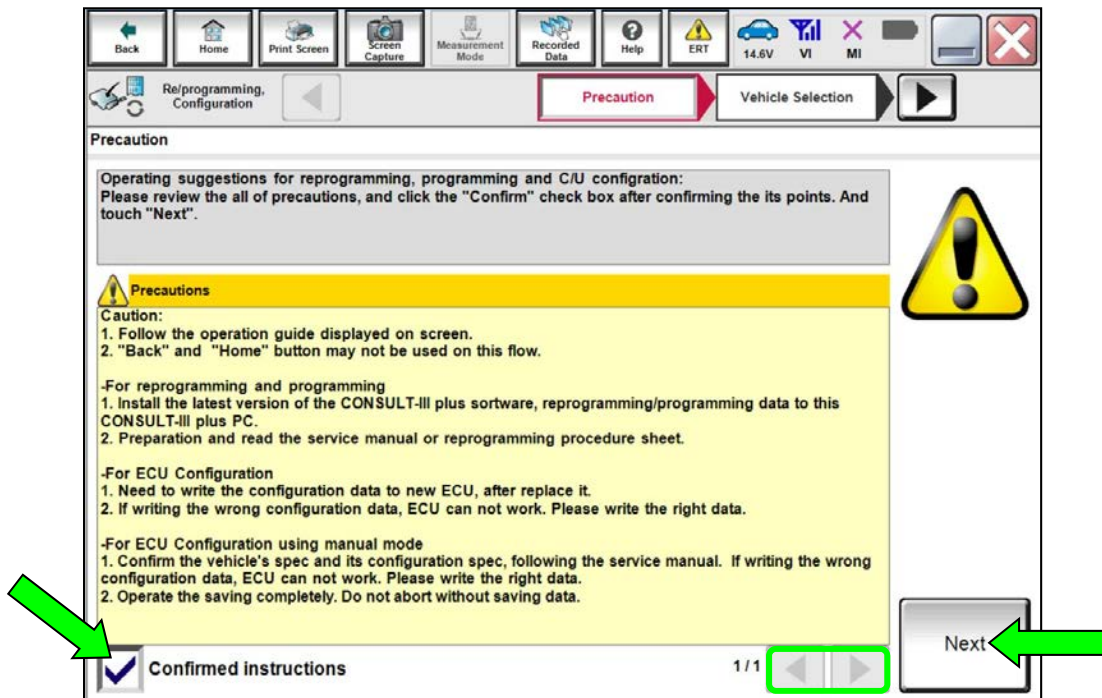


Figure 15

36. Select **Automatic Selection(VIN)**.

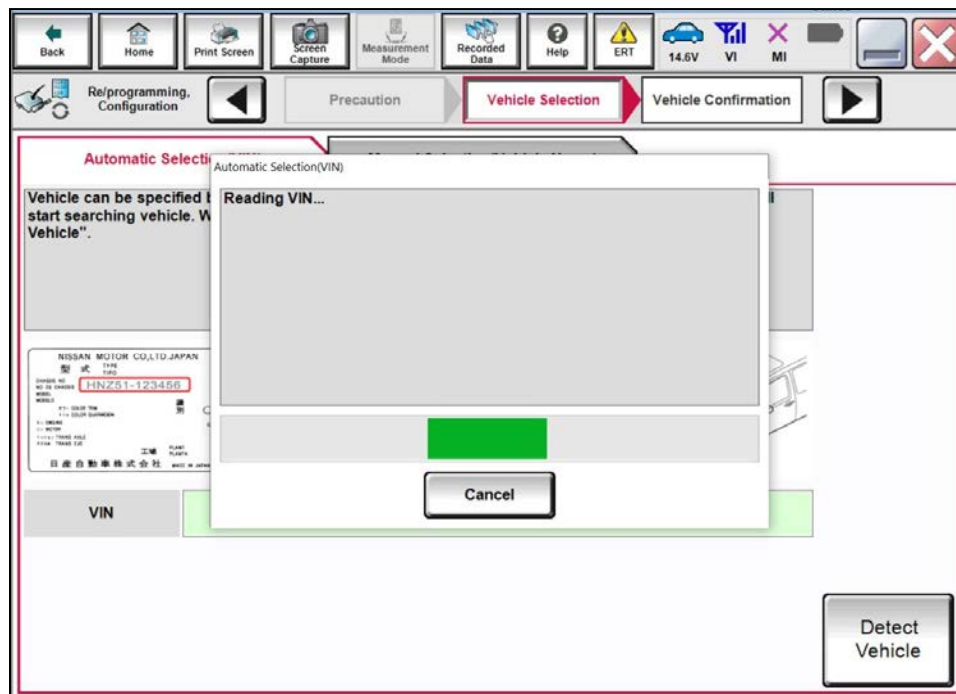


Figure 16

37. Confirm the selected information is correct for the vehicle, and then select **Confirm**.

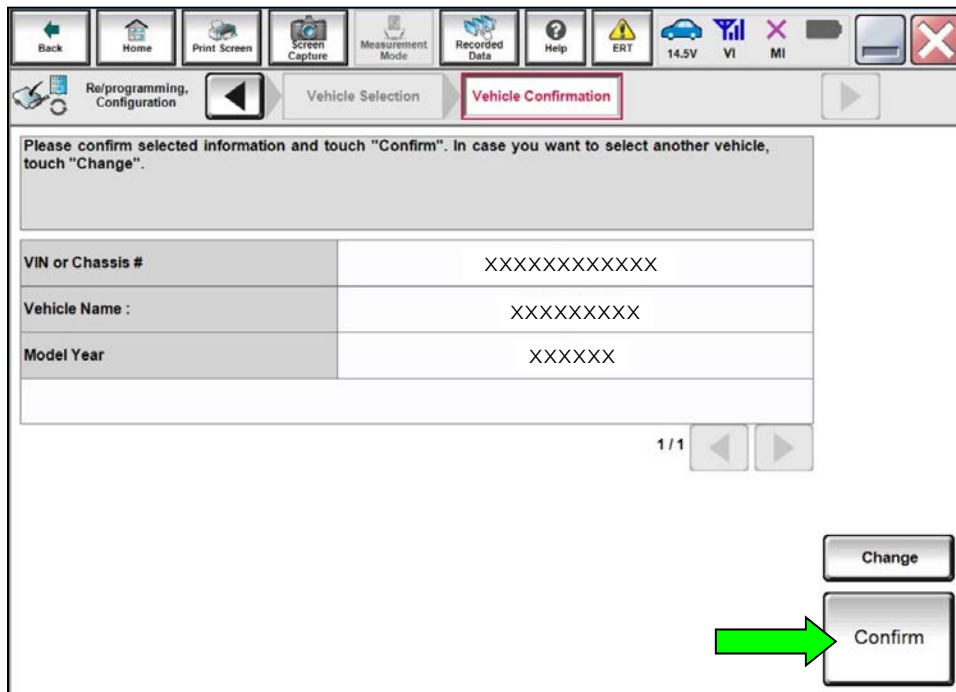


Figure 17

38. Allow **System call** to complete.

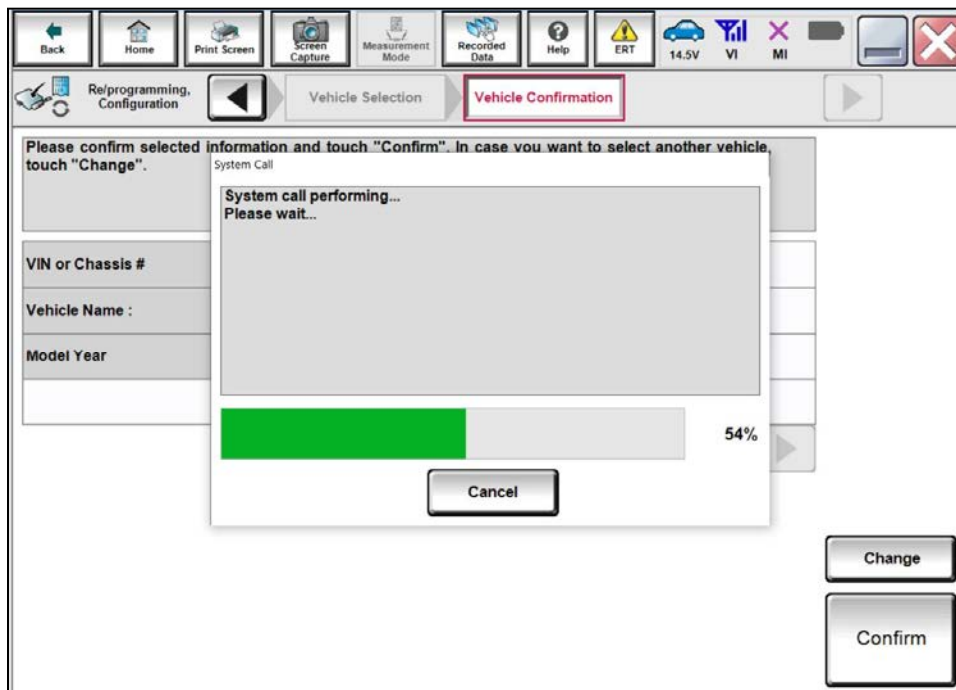


Figure 18

39. Verify the VIN, and then select **Confirm**.

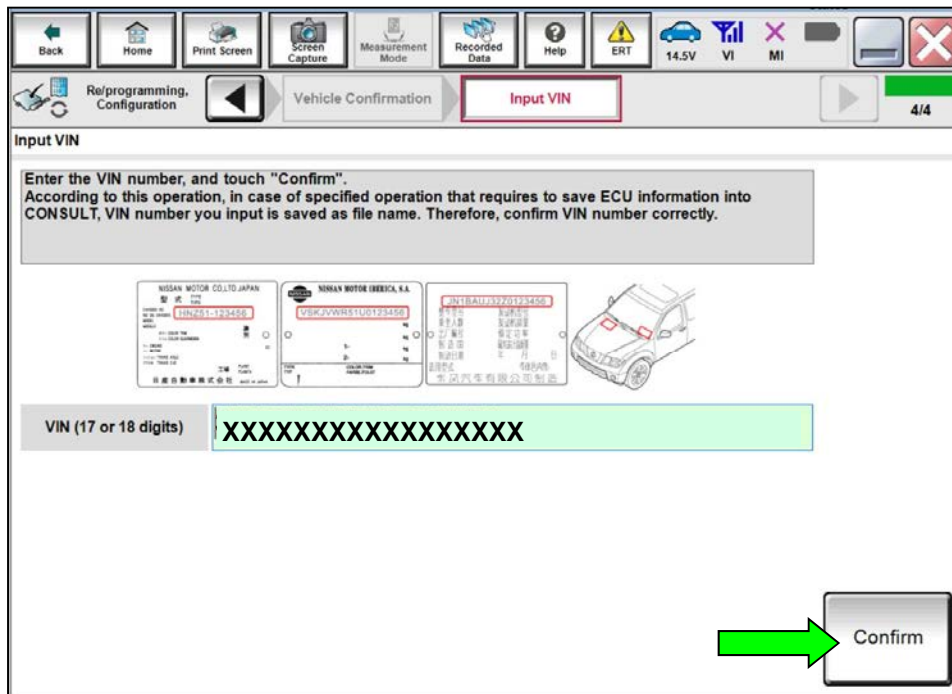


Figure 19

40. Wait for the **Operation Log Selection** screen to populate.

41. Touch and select the data in **Saved Data List** (left side).

42. If the **Saved Data Detail** is OK, select **Confirm**.

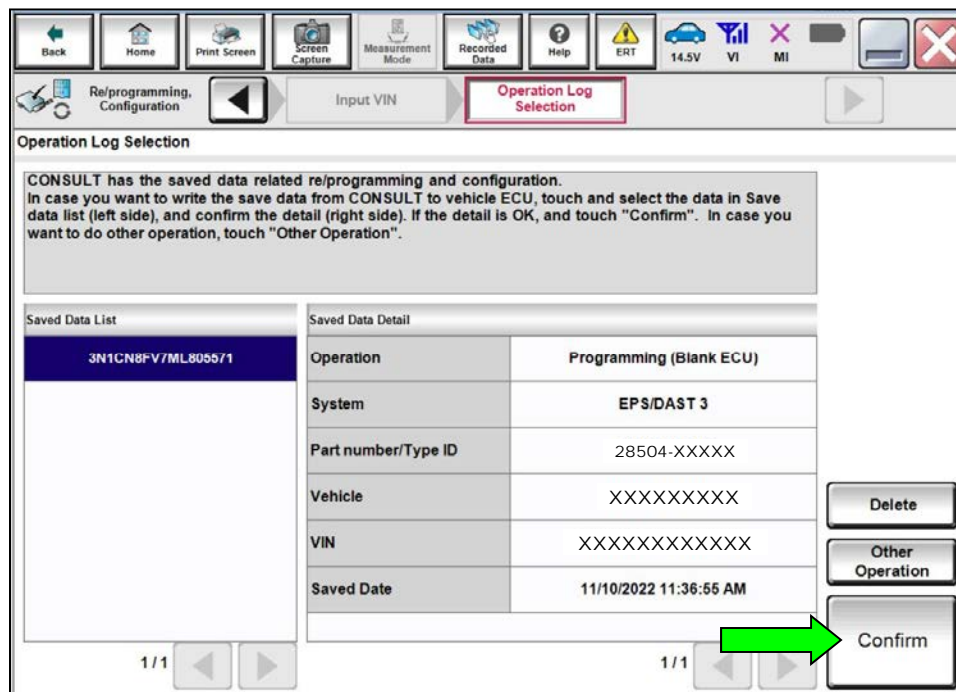


Figure 20



43. Select **Yes**.

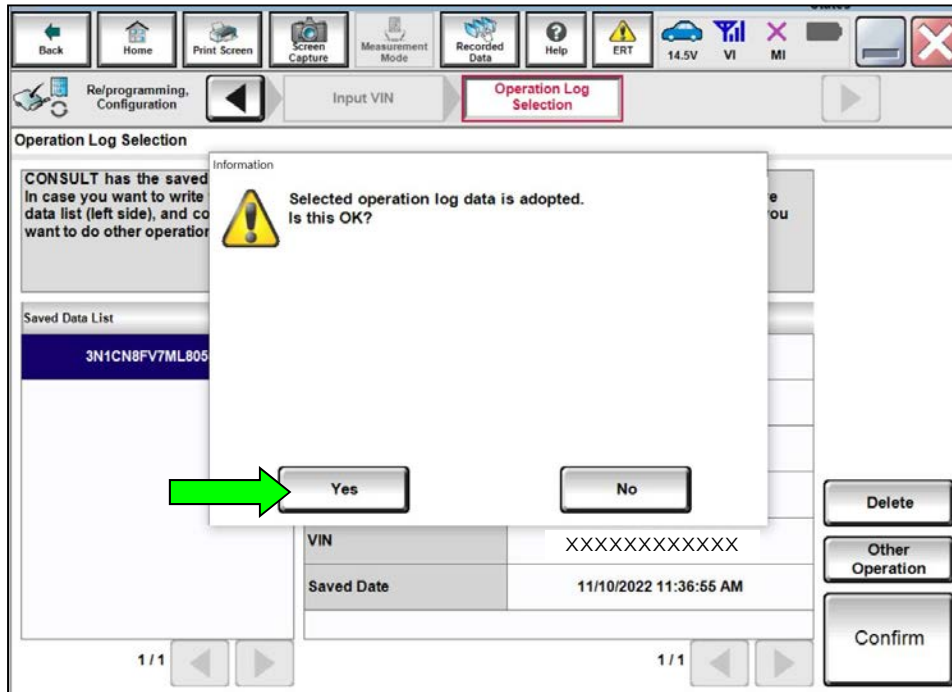


Figure 21

44. Check the box to confirm the precaution instructions have been read, and then select **Next**.

**HINT:** Use the arrows (if needed) to view and read all precautions.

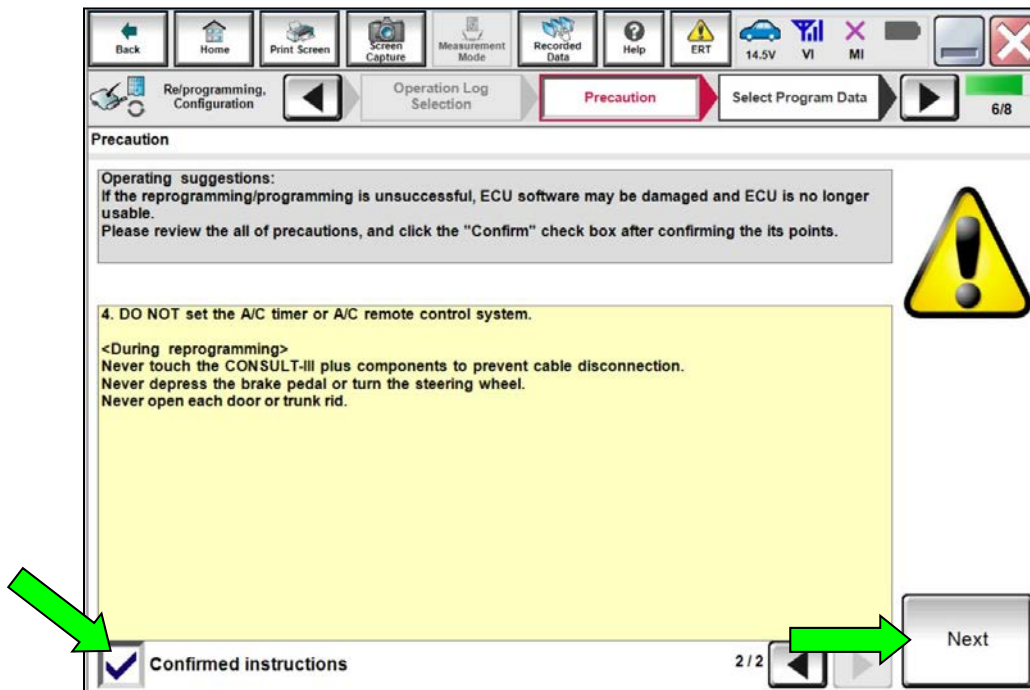


Figure 22

45. Confirm the **Select Program Data** is correct, and then select **Next**.

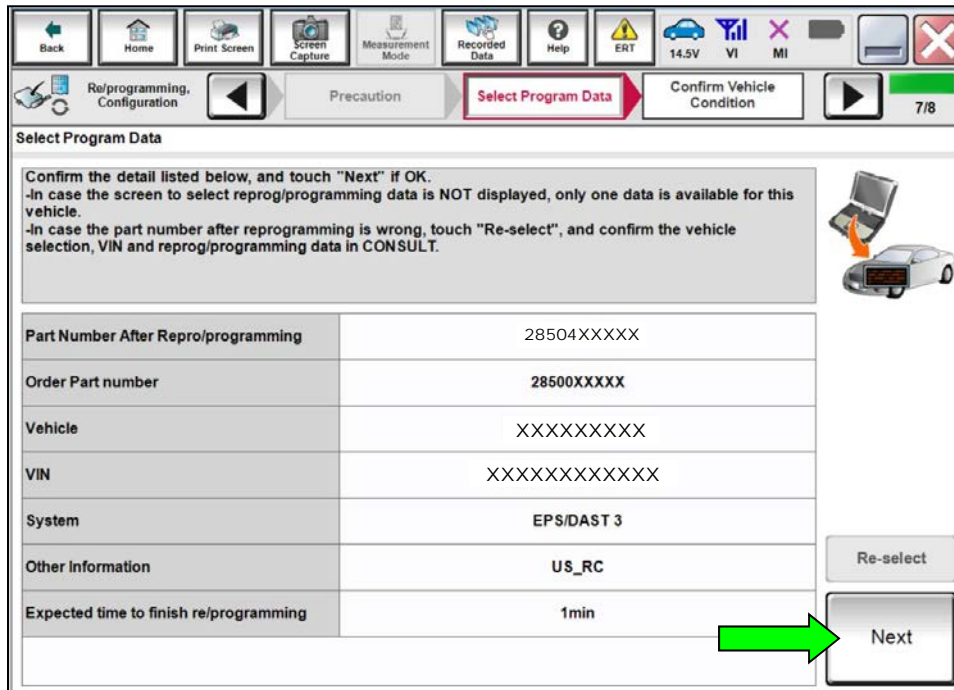


Figure 23

46. Follow the screen prompts to ensure the vehicle condition is **OK**, and then select **Next**.

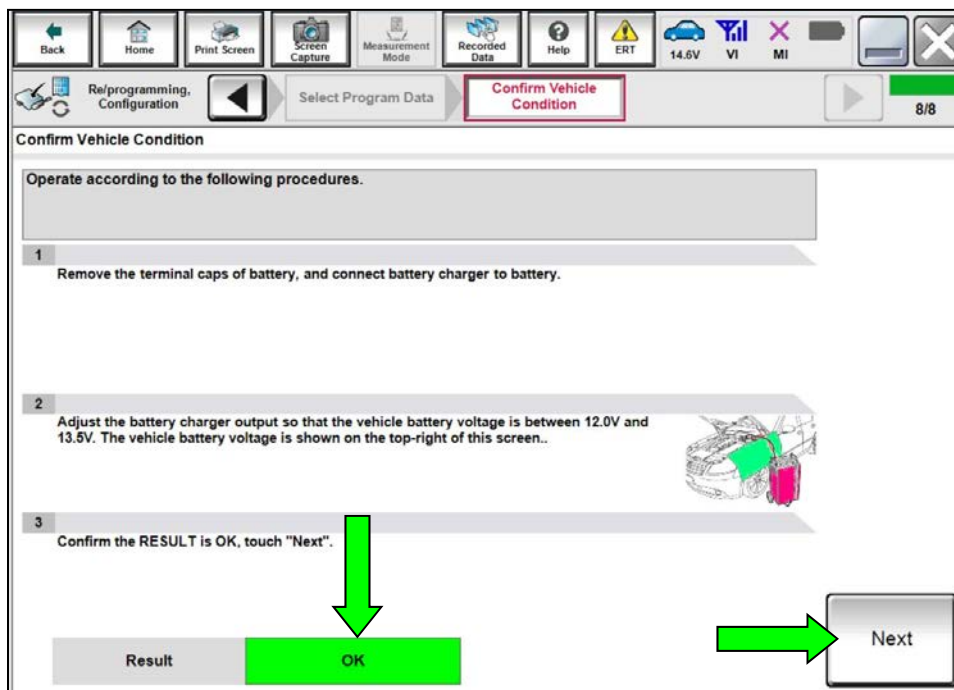


Figure 24

- Confirm all **Judgement** items are GREEN, and then select **Start** to write the EPS control unit data.

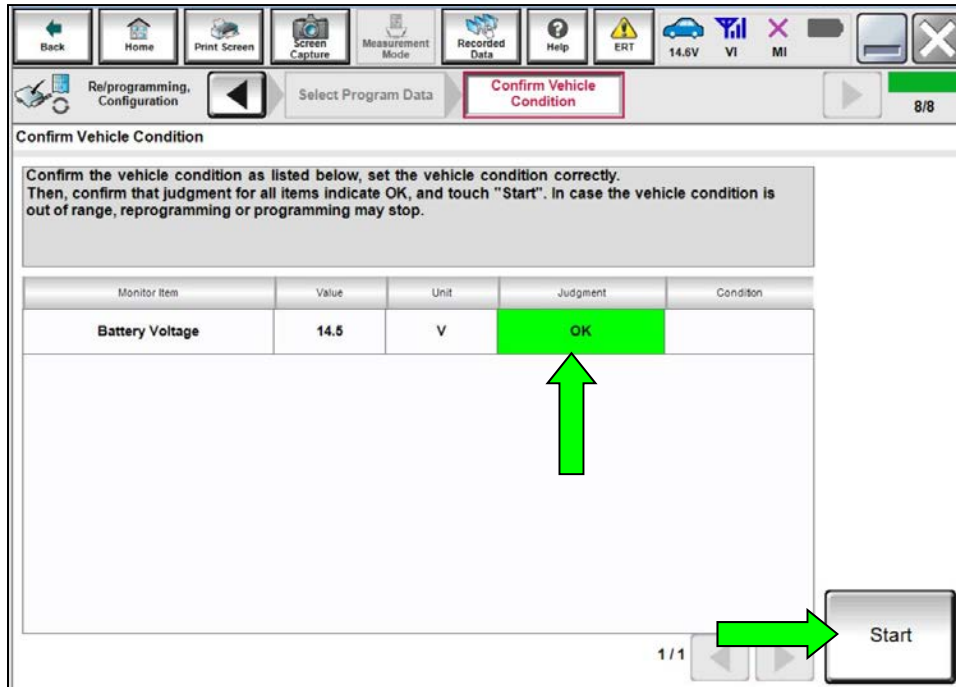


Figure 25

- Allow **Transfer Data** to complete.

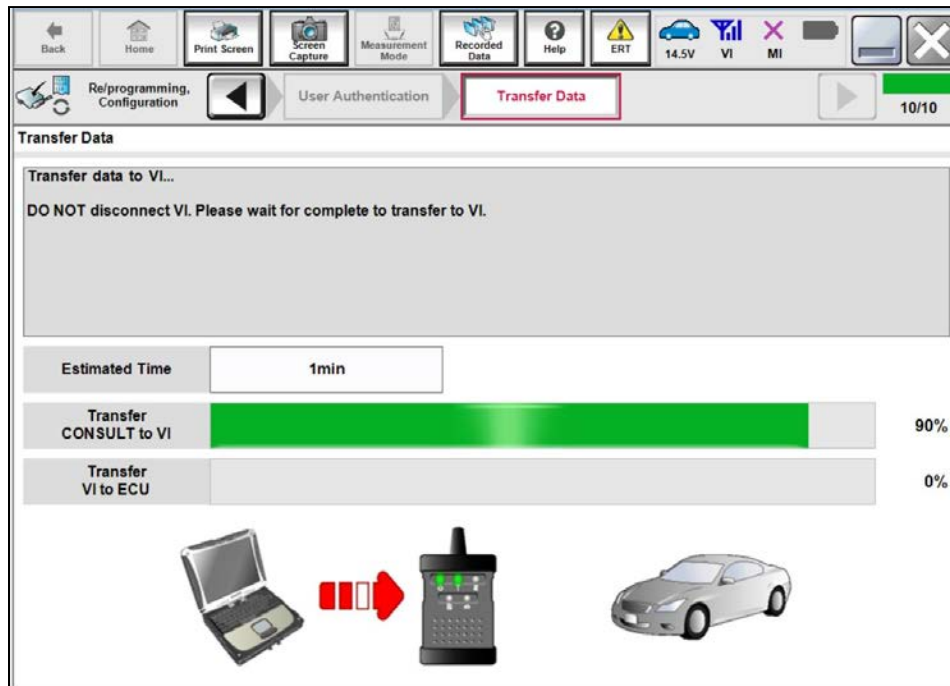


Figure 26

49. When the screen in Figure 27 displays, select **Next** (reprogramming is complete).
- If the screen in Figure 27 does not display (which indicates reprogramming did not complete), skip to **Control Unit Recovery** on page 23.

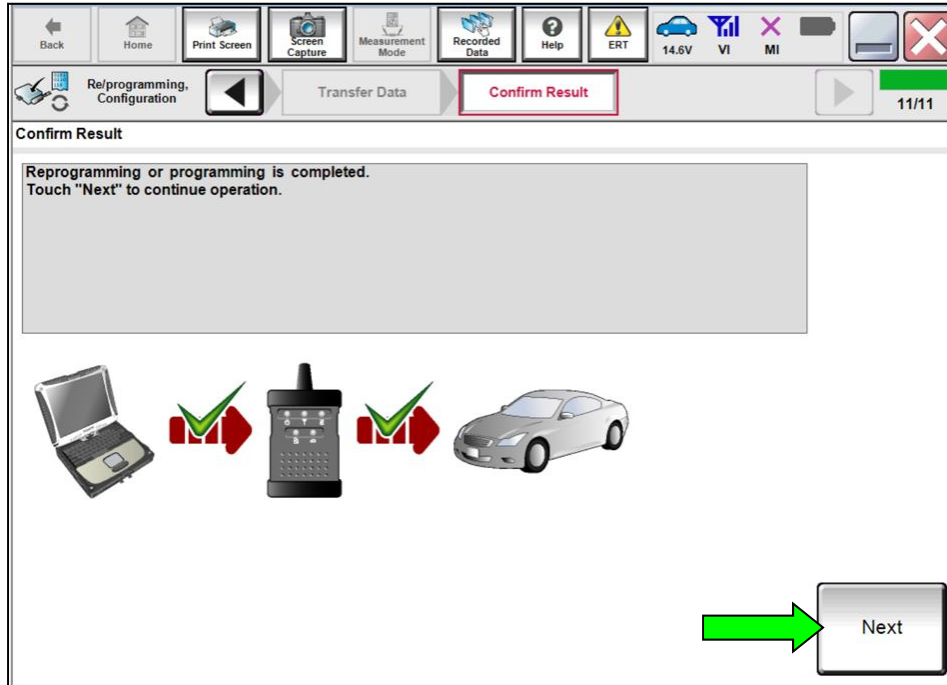


Figure 27

50. Follow the on-screen prompts, and then select **Next**.

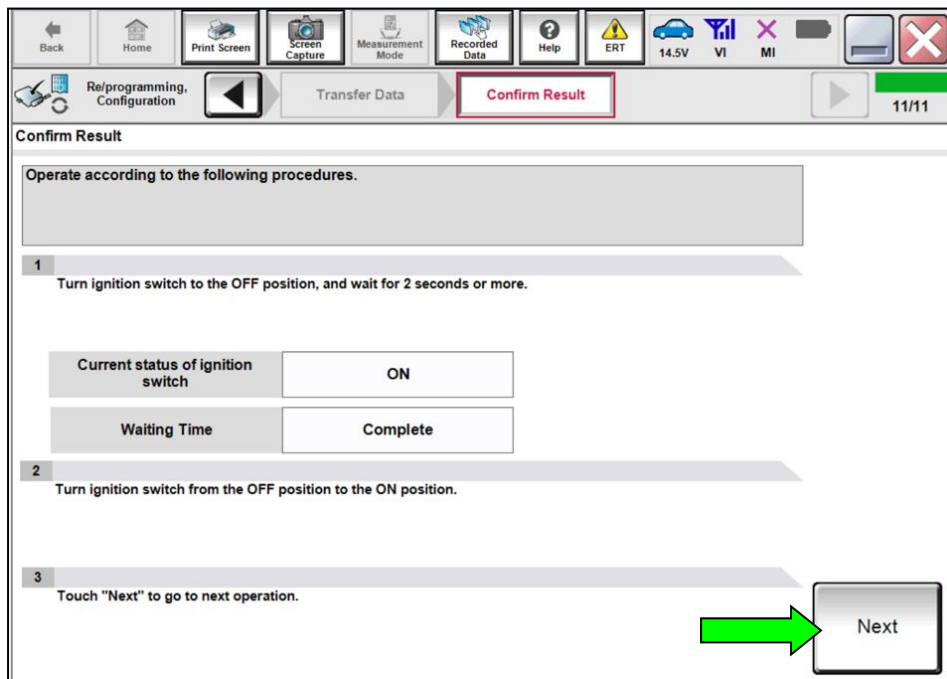


Figure 28

51. Allow **System call** to complete, and then select **Next**.

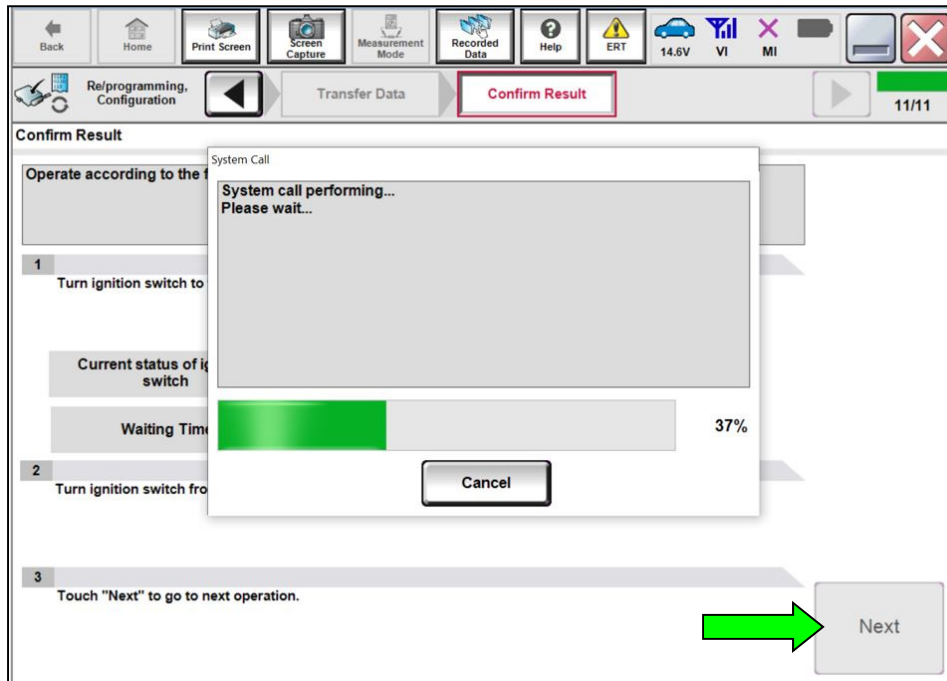


Figure 29

52. Follow the on-screen prompts to **Erase All DTCs**.

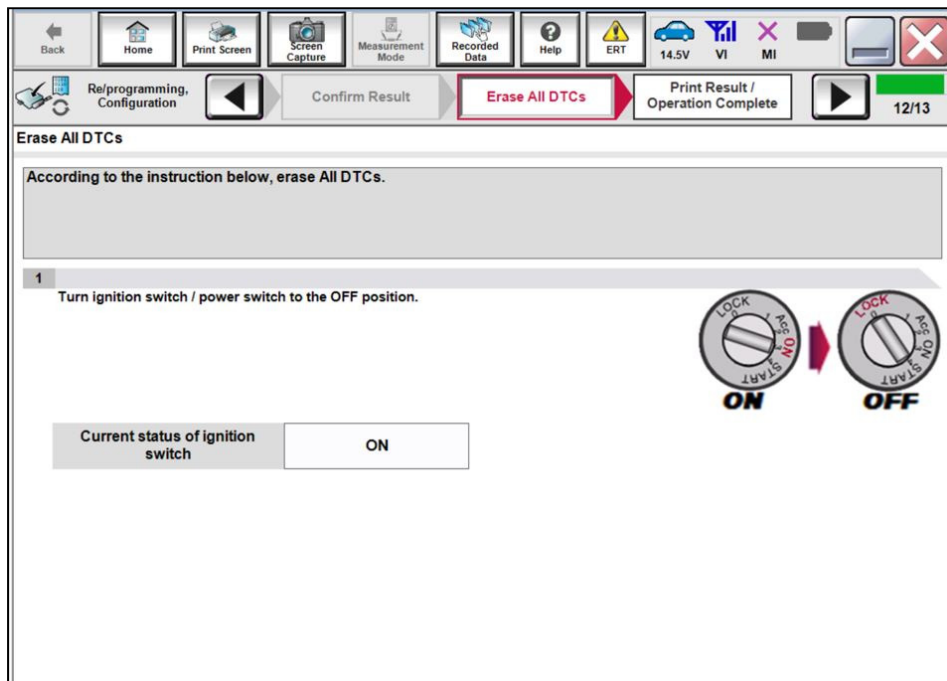


Figure 30

53. After completing **Erase All DTCs**, print a copy of the CONSULT screen showing the before and after part numbers of the control unit and attach it to the repair order, and then select **Confirm**.

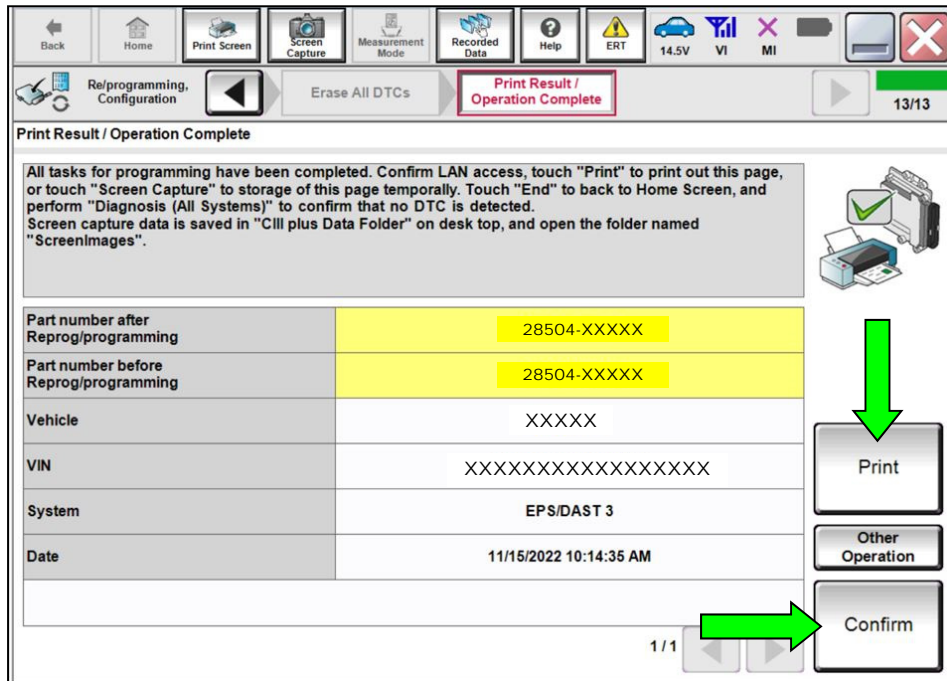


Figure 31

54. Follow the on-screen prompts.

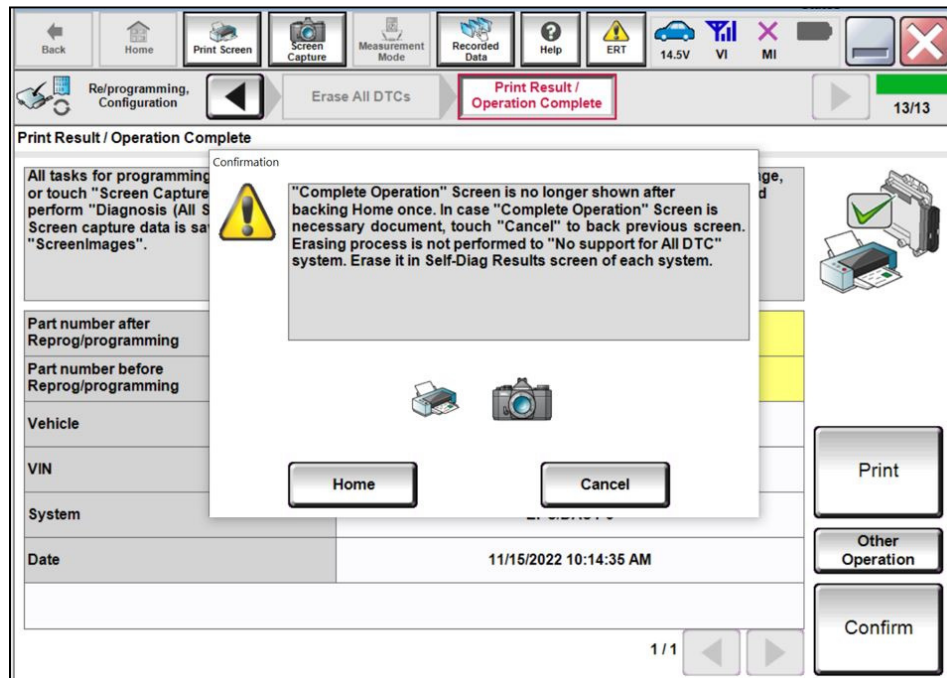


Figure 32

55. Close the C-III plus application.
56. Remove the VI from the vehicle.

## Control Unit Recovery

**Do not disconnect the VI or shut down C-III plus if reprogramming does not complete.**

If reprogramming does not complete and the “!?” icon displays as shown in Figure 33:

- Check battery voltage (12.0–15.5 V).
- Ignition is ON, engine OFF.
- External Bluetooth® devices are OFF.
- All electrical loads are OFF.
- **Select retry and follow the on screen instructions.**
- “Retry” may not go through on first attempt and can be selected more than once.

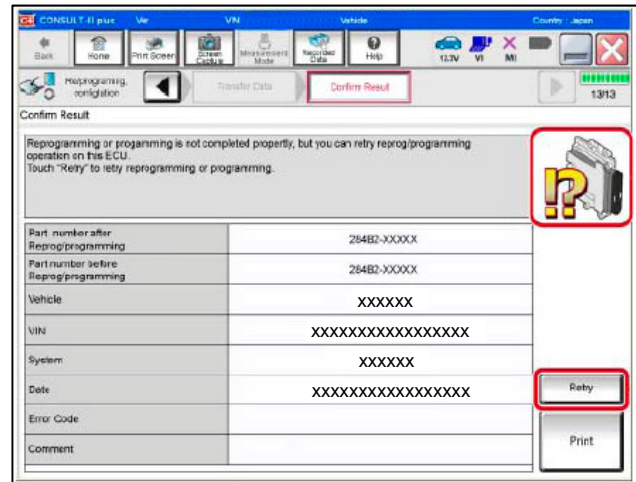


Figure 33

If reprogramming does not complete and the “X” icon displays as shown in Figure 34:

- Check battery voltage (12.0–15.5 V).
- CONSULT A/C adapter is plugged in.
- Ignition is ON, engine OFF.
- Transmission is in Park.
- All C-III plus / VI cables are securely connected.
- All C-III plus updates are installed.
- **Select Home, and restart the reprogram procedure from the beginning.**

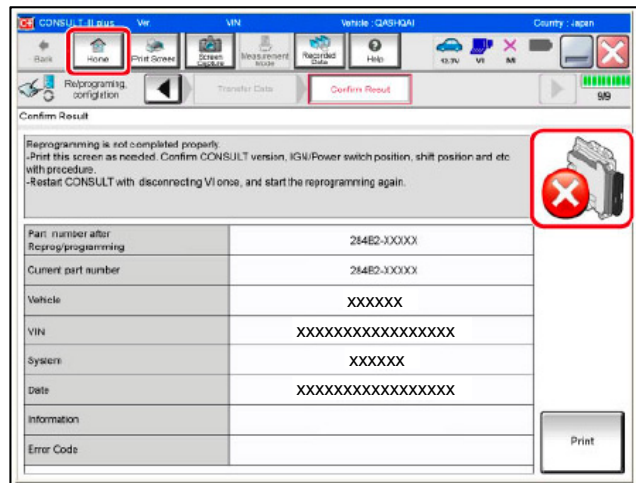


Figure 34

## PARTS INFORMATION

DESCRIPTION	PART NUMBER	QUANTITY
BOLT (Knee Air Bag Module)	01125-N6061	2
BOLT (Steering Wheel)	48935-3BA0A	If Needed (1)
COLUMN ASSY – STEERING, UPPER	48810-5EE0A	If Needed (1)

(1) Only to be used if the steering column requires replacement.

## CLAIMS INFORMATION

Submit a “CM” line claim using the following claims coding:

CAMPAIGN (“CM”) ID	DESCRIPTION	OP CODE	FRT
PMA25	Inspect Torque Sensor – OK Condition	PMA250	0.7
	Inspect Torque Sensor and Replace Steering Column	PMA251	1.8
PMA26	Inspect Torque Sensor – OK Condition	PMA260	0.7
	Inspect Torque Sensor and Replace Steering Column	PMA261	1.8

## EXPENSE CODE

EXPENSE CODE	DESCRIPTION	MAX AMOUNT
061	Crayons	\$2.00

## AMENDMENT HISTORY

PUBLISHED DATE	REFERENCE	DESCRIPTION
September 15, 2022	NTB22-079	Original bulletin published
November 30, 2022	NTB22-079A	Changes throughout
July 25, 2023	NTB22-079B	Page 1 revised, Steps 5 and 6 added, Step 23 revised, Figure 13 added, Table A updated, Steps 31 and 32 added, <b>CLAIMS INFORMATION</b> updated