



VOLUNTARY RECALL CAMPAIGN

Classification: RS23-005A	Reference: NTB23-047A	Date: September 19, 2023
------------------------------	--------------------------	-----------------------------

VOLUNTARY SAFETY RECALL CAMPAIGN 2023 ROGUE; REAR SEAT BELT ANCHOR

This bulletin has been amended. See AMENDMENT HISTORY on the last page.
Please discard previous versions of this bulletin.

CAMPAIGN ID #: PC979
APPLIED VEHICLES: 2023 Rogue (T33)

**Check Service COMM or Dealer Business Systems (DBS)
National Service History to confirm campaign eligibility.**

INTRODUCTION

Nissan is conducting this voluntary safety recall campaign on certain specific model year 2023 Rogue vehicles to inspect both lower rear seat belt anchor bolts and correct the installation if needed. This service will be performed at no charge to the customer for parts or labor.

IDENTIFICATION NUMBER

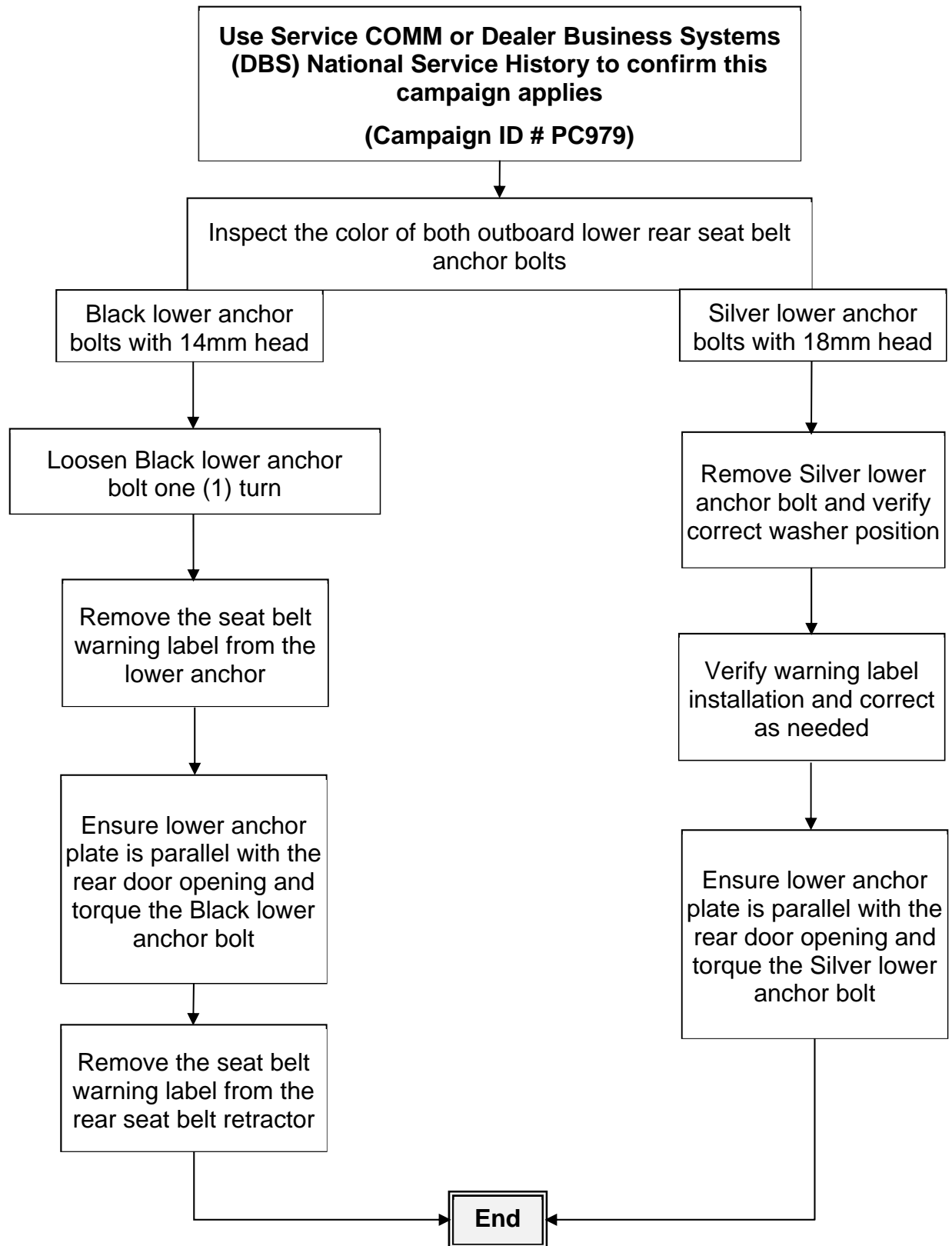
Nissan has assigned identification number PC979 to this campaign. This number must appear on all communication and documentation of any nature dealing with this campaign.

DEALER RESPONSIBILITY

It is the dealer's responsibility to check Service COMM or Dealer Business Systems (DBS) National Service History for the campaign status on each vehicle falling within the range of this voluntary safety recall which for any reason enters the service department. This includes vehicles purchased from private parties or presented by transient (tourist) owners and vehicles in a dealer's inventory. **Federal law requires that new vehicles in dealer inventory which are the subject of a safety recall must be corrected prior to sale. Failure to do so can result in civil penalties by the National Highway Traffic Safety Administration.** While federal law applies only to new vehicles, Nissan strongly encourages dealers to correct any used vehicles in their inventory before they are retailed.

Bulletins are intended for use by qualified technicians, not 'do-it-yourselfers'. Qualified technicians are properly trained individuals who have the equipment, tools, safety instruction, and know-how to do a job properly and safely. **NOTE:** If you believe that a described condition may apply to a particular vehicle, DO NOT assume that it does. See your Nissan dealer to determine if this applies to your vehicle.

REPAIR OVERVIEW



SERVICE PROCEDURE

⚠ WARNING

To avoid the risk of death or severe personal injury:

- Follow all cautions, warnings and notes when working on or near a Supplemental Restraint System (SRS), such as an air bag.
- Before servicing the SRS, turn the ignition switch OFF, disconnect both battery terminals, and then wait at least 3 minutes before proceeding.
- Always work from the side of the rear side air bag bolster.
- Do not use air tools or electric tools for servicing the rear seat bolster.
- Always place the rear seat bolster with the pad side facing upward.
- Do not cause impact to the rear side air bag module by dropping, etc. Replace the rear seat bolster if it has been dropped or sustained an impact.
- Do not allow oil, grease, detergent or water to come in contact with the rear side air bag module.

NOTICE

To avoid damage to the vehicle, handle interior trim carefully. Work with clean hands and clean tools to avoid dirt and stains. Use protective covers as needed.

HINT: The figures in this service procedure show the passenger (RH) side of the vehicle; the driver (LH) side is a mirror image.

1. Remove the rear seat bottom cushion.
 - Refer to the ESM: **BODY INTERIOR > SEAT > REMOVAL AND INSTALLATION > REAR SEAT > Removal and Installation**
2. Locate and inspect BOTH outboard lower rear seat belt anchor bolts and note the bolt color on the repair order for each side (Figure 1 and Figure 2).
 - For bolts that are **BLACK** with a 14mm head, continue to step 3.
 - For bolts that are **SILVER** with an 18mm head, skip to step 5 on page 5.

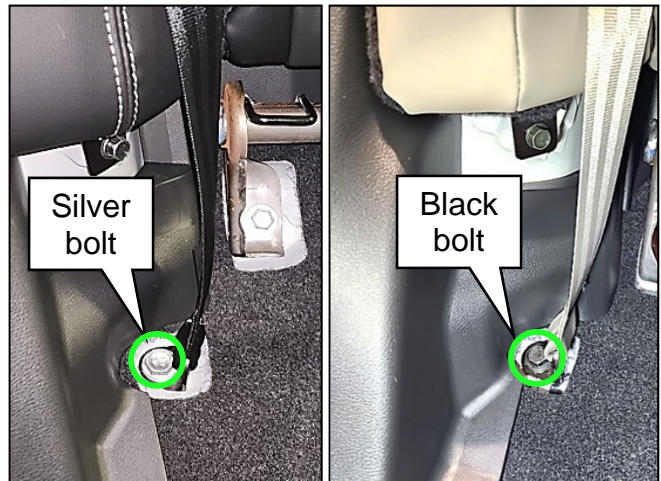


Figure 1

Figure 2

HINT: Some vehicles may have SILVER lower rear seat belt anchor bolts on both sides of the vehicle.

IMPORTANT: Step 3 and step 4 only apply to outboard lower rear seat belts with a **BLACK** lower anchor bolt (14mm head).

3. Loosen the **BLACK** outboard lower rear seat belt anchor bolt one (1) turn and then remove the rear seat belt warning label (Figure 3).
4. Make sure the anchor plate is parallel to the door opening and torque the **BLACK** outboard lower rear seat belt anchor bolt(s).
 - a. Outboard lower rear seat belt anchor bolt torque: 49 N•m (5.0 kg-m, **36 ft-lb**)
 - b. Skip to step 9 on page 6.

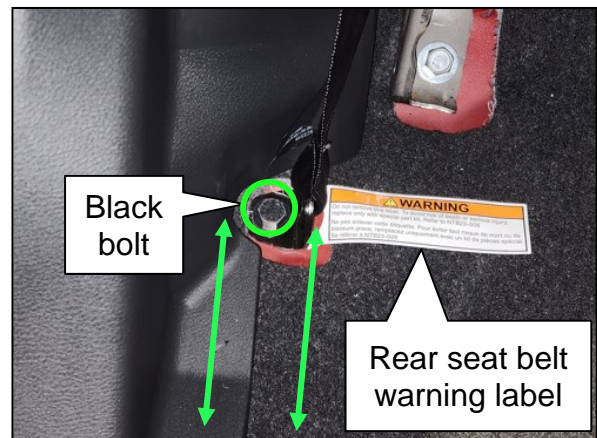


Figure 3

IMPORTANT: Steps 5-8 only apply to outboard lower rear seat belts with a **SILVER** anchor bolt (18mm head).

5. Remove the **SILVER** outboard lower rear seat belt anchor bolt.



Figure 4

6. Verify correct positioning of the **SILVER** outboard lower rear seat belt anchor bolt washer and the seat belt warning label (Figure 5).

- a. Verify the seat belt warning label is installed as shown in Figure 5.
 - o Correct the warning label installation as needed.
- b. Verify the outboard lower rear seat belt anchor bolt washer is positioned between the bolt and the anchor plate.
 - o Correct the washer placement as needed.



Figure 5

7. Ensure the seat belt webbing is not twisted.
8. Verify the anchor plate is parallel to the door opening, and then reinstall the outboard lower rear seat belt anchor bolt.
 - a. Outboard lower rear seat belt anchor bolt torque: 85 N•m (8.6 kg-m, **63 ft-lb**)
 - b. Continue to step 9 on page 6.

9. Turn the ignition ON.

10. Write down the radio settings.

Presets	1	2	3	4	5	6
AM						
FM 1						
FM 2						
XM 1						
XM 2						
XM 3						
Bass	Treble		Balance		Speed Sen. Vol.	

11. If equipped, write down the customer settings for the ATC (Automatic Temperature Control) system.

12. Turn the ignition OFF.

13. Disconnect the negative and positive battery terminals, negative battery terminal first.
 - Refer to the ESM: **GENERAL INFORMATION > GENERAL INFORMATION > PRECAUTION > PRECAUTIONS > PRECAUTIONS FOR REMOVING BATTERY TERMINAL:Precautions**

14. Wait at least 3 minutes.

15. Remove the rear side air bag (bolster) bolts shown in Figure 6 for both sides.

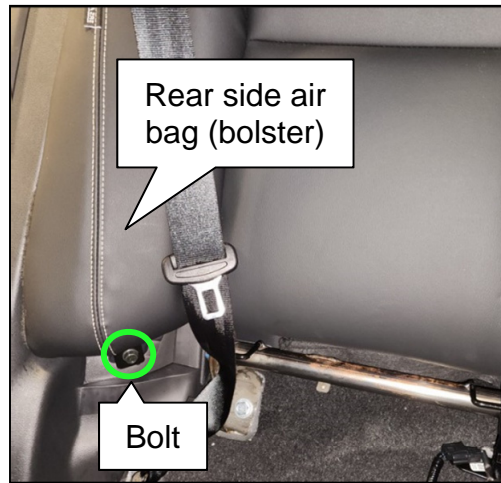


Figure 6

16. Lower the rear seat back assembly.



Figure 7

⚠ WARNING

To avoid the risk of death or severe personal injury, always place the rear side air bag module deploying direction facing upward.

17. Remove the rear side air bag (bolster) for both sides.
 - a. Push the rear side air bag (bolster) upward to disengage the upper retainer for both sides.
 - Do **NOT** disconnect the rear side air bag connectors.



Figure 8

- b. Pull the rear side air bag (bolster) away from the body, but do not disconnect the wiring harness connector.

HINT: There is no need to disconnect the rear side air bags (bolsters).

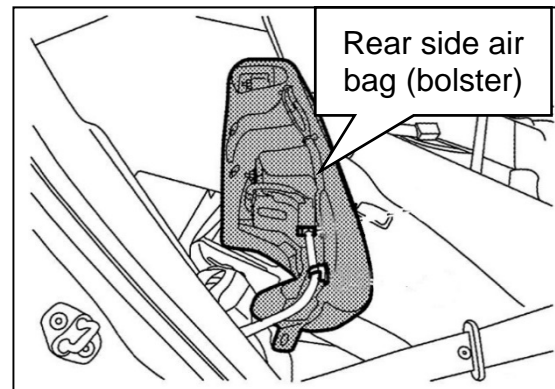


Figure 9

- c. Place the rear side air bag (bolster) next to the folded rear seat back assembly, with the air bag module deploying direction facing upward, as shown in Figure 10.

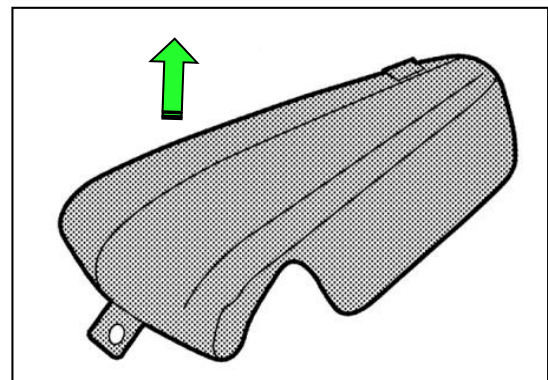


Figure 10

18. Partially remove the rear door body side welt (weather strip), as shown in Figure 11, for both sides.



Figure 11

19. Lift the edge of the luggage side lower finisher to separate the retainers from the body, as shown in Figure 12, for both sides.



Figure 12

20. Carefully separate the luggage side lower finisher from the upper finisher, as shown in Figure 13, for both sides.

- For seat belts with a **BLACK** outboard lower rear anchor bolt with a 14mm head, continue to step 21 on page 10.
- For seat belts with a **SILVER** outboard lower rear anchor bolt with an 18mm head, skip to step 22 on page 10.



Figure 13

IMPORTANT: Step 21 only applies to outboard lower rear seat belts with a **BLACK** lower anchor bolt (14mm head).

21. Remove the seat belt warning label only from the rear seat belt retractor with a **BLACK** lower anchor bolt (14mm head).

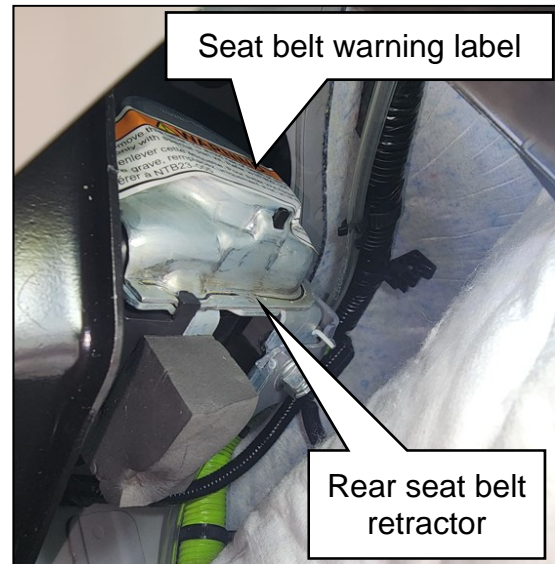


Figure 14

IMPORTANT: Step 22 only applies to outboard lower rear seat belts with a **SILVER** lower anchor bolt (18mm head).

22. Inspect the rear seat belt warning label(s).
 - If a rear seat belt warning label is not adhered correctly, as shown in Figure 15, remove and reinstall the warning label correctly, as shown in Figure 16.

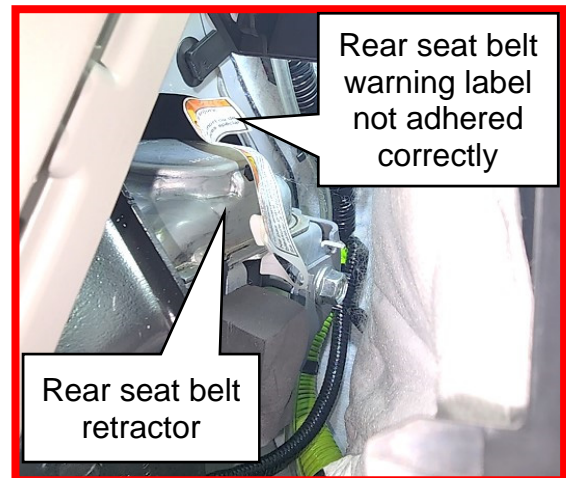


Figure 15

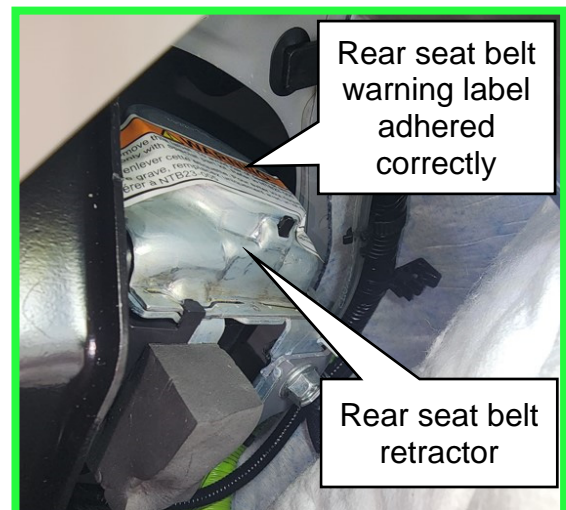


Figure 16

23. Reinstall both luggage side lower finishers.
24. Reinstall both rear door body side welts (weather strips).
25. Reinstall both rear side air bags (bolsters).

IMPORTANT: When reinstalling the rear side air bags (bolsters), be sure the upper retainer is locked into place by pulling the upper side of the bolster forward (toward the front of the vehicle).

- a. Raise the rear seat back assembly.
- b. Torque the rear side air bag (bolster) bolts.
 - o Rear side air bag (bolster) bolt torque: 25 N•m (2.6 kg-m, **18 ft-lb**)



Figure 17

26. Reinstall the rear seat bottom cushion.
 - Refer to the ESM: **BODY INTERIOR > SEAT > REMOVAL AND INSTALLATION > REAR SEAT > Removal and Installation**
27. Reconnect the positive battery terminal.
 - Positive battery terminal nut torque: 5.39 N•m (0.55 kg-m, **48 in-lb**)
28. Reconnect the negative battery terminal.
 - Negative battery terminal nut torque: 8.00 N•m (0.82 kg-m, **71 in-lb**)
29. Perform **ADDITIONAL SERVICE WHEN REMOVING BATTERY NEGATIVE TERMINAL.**
 - Refer to the ESM: **ELECTRICAL & POWER CONTROL > POWER SUPPLY, GROUND & CIRCUIT ELEMENTS > BASIC INSPECTION > INSPECTION AND ADJUSTMENT > ADDITIONAL SERVICE WHEN REMOVING BATTERY NEGATIVE TERMINAL > Required Procedure After Battery Disconnection**

CLAIMS INFORMATION

Submit a "CM" line claim using the following claims coding:

CAMPAIGN ("CM") ID	DESCRIPTION	OP CODE	FRT
PC979	Inspect and correct outboard lower rear seat belt anchor hardware and warning labels	PC9791	0.6

AMENDMENT HISTORY

PUBLISHED DATE	REFERENCE	DESCRIPTION
May 25, 2023	NTB23-047	Original bulletin published
September 19, 2023	NTB23-047A	Changes made throughout

