



VOLUNTARY RECALL CAMPAIGN

Classification: RS23-004A	Reference: NTB23-046A	Date: September 19, 2023
------------------------------	--------------------------	-----------------------------

VOLUNTARY SAFETY RECALL CAMPAIGN 2023 ROGUE; REAR SEAT BELT ANCHOR

This bulletin has been amended. See AMENDMENT HISTORY on the last page.
Please discard previous versions of this bulletin.

CAMPAIGN ID #: PC978
APPLIED VEHICLES: 2023 Rogue (T33)

**Check Service COMM or Dealer Business Systems (DBS)
National Service History to confirm campaign eligibility.**

INTRODUCTION

Nissan is conducting this voluntary safety recall campaign on certain specific model year 2023 Rogue vehicles to inspect both lower rear seat belt anchor bolts and, if needed, replace the washer and install special labels. This service will be performed at no charge to the customer for parts or labor.

IDENTIFICATION NUMBER

Nissan has assigned identification number PC978 to this campaign. This number must appear on all communication and documentation of any nature dealing with this campaign.

DEALER RESPONSIBILITY

It is the dealer's responsibility to check Service COMM or Dealer Business Systems (DBS) National Service History for the campaign status on each vehicle falling within the range of this voluntary safety recall which for any reason enters the service department. This includes vehicles purchased from private parties or presented by transient (tourist) owners and vehicles in a dealer's inventory. **Federal law requires that new vehicles in dealer inventory which are the subject of a safety recall must be corrected prior to sale. Failure to do so can result in civil penalties by the National Highway Traffic Safety Administration.** While federal law applies only to new vehicles, Nissan strongly encourages dealers to correct any used vehicles in their inventory before they are retailed.

Bulletins are intended for use by qualified technicians, not 'do-it-yourselfers'. Qualified technicians are properly trained individuals who have the equipment, tools, safety instruction, and know-how to do a job properly and safely. **NOTE:** If you believe that a described condition may apply to a particular vehicle, DO NOT assume that it does. See your Nissan dealer to determine if this applies to your vehicle.

SERVICE PROCEDURE

⚠ WARNING

To avoid the risk of death or severe personal injury:

- Follow all cautions, warnings and notes when working on or near a Supplemental Restraint System (SRS), such as an air bag.
- Before servicing the SRS, turn the ignition switch OFF, disconnect both battery terminals, and then wait at least 3 minutes before proceeding.
- Always work from the side of the rear side air bag bolster.
- Do not use air tools or electric tools for servicing the rear seat bolster.
- Always place the rear seat bolster with the pad side facing upward.
- Do not cause impact to the rear side air bag module by dropping, etc. Replace the rear seat bolster if it has been dropped or sustained an impact.
- Do not allow oil, grease, detergent or water to come in contact with the rear side air bag module.

NOTICE

To avoid damage to the vehicle, handle interior trim carefully. Work with clean hands and clean tools to avoid dirt and stains. Use protective covers as needed.

HINT: The figures in this service procedure show the passenger (RH) side of the vehicle; the driver (LH) side is a mirror image.

1. Remove the rear seat bottom cushion.
 - Refer to the ESM: **BODY INTERIOR > SEAT > REMOVAL AND INSTALLATION > REAR SEAT > Removal and Installation**

HINT: Some vehicles may have SILVER lower rear seat belt anchor bolts on both sides of the vehicle.

2. Locate and inspect BOTH outboard lower rear seat belt anchor bolts (Figure 1 and Figure 2).
 - For ALL bolts that are **SILVER** with an 18mm head, complete steps 3-25 on pages 4-10 for installing the rear seat belt warning label and replacing the lower rear seat belt anchor bolt washer.
 - For ALL bolts that are **BLACK** with a 14mm head, **DO NOT install a rear seat belt warning label or replace the washer for that seat belt.**

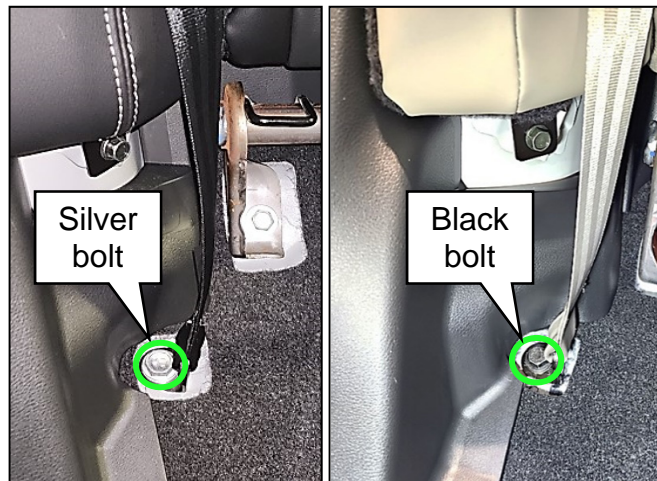


Figure 1

Figure 2

3. Turn the ignition ON.
4. Write down the radio settings.

Presets	1	2	3	4	5	6		
AM								
FM 1								
FM 2								
XM 1								
XM 2								
XM 3								
Bass		Treble		Balance		Fade		Speed Sen. Vol.

5. If equipped, write down the customer settings for the ATC (Automatic Temperature Control) system.
6. Turn the ignition OFF.
7. Disconnect the negative and positive battery terminals, negative battery terminal first.
 - Refer to the ESM: **GENERAL INFORMATION > GENERAL INFORMATION > PRECAUTION > PRECAUTIONS > PRECAUTIONS FOR REMOVING BATTERY TERMINAL:Precautions**
8. Wait at least 3 minutes.

9. Remove the rear side air bag (bolster) bolt shown in Figure 3.

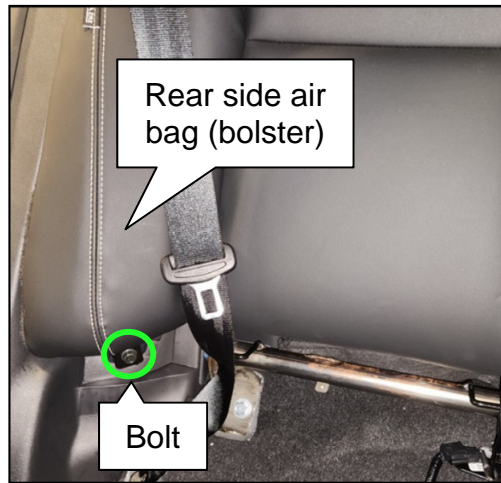


Figure 3

10. Lower the rear seat back assembly.



Figure 4

⚠ WARNING

To avoid the risk of death or severe personal injury, always place the rear side air bag module deploying direction facing upward.

11. Remove the rear side air bag (bolster).
 - a. Push the rear side air bag (bolster) upward to disengage the upper retainer (Figure 5).



Figure 5

- b. Pull the rear side air bag (bolster) away from the body, but do not disconnect the wiring harness connector.

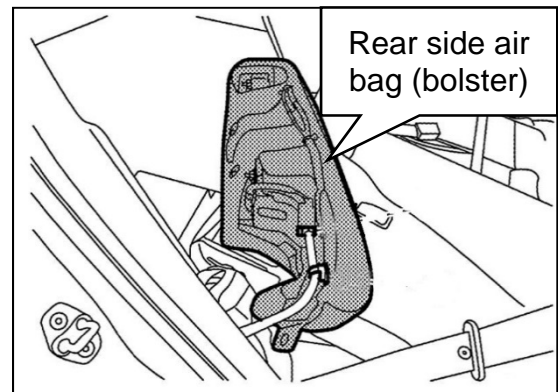


Figure 6

HINT: There is no need to disconnect the wiring harness connector to the rear side air bags (bolsters).

- c. Place the rear side air bag (bolster) next to the folded rear seat back assembly, with the air bag module deploying direction facing upward as shown in Figure 7.

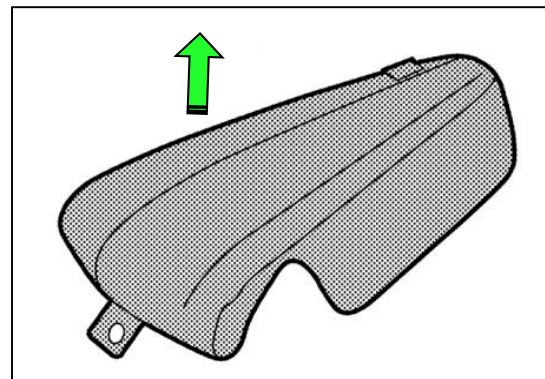


Figure 7

12. Partially remove the rear door body side welt (weather strip), as shown in Figure 8.



Figure 8

13. Lift the edge of the luggage side lower finisher to separate the retainers from the body, as shown in Figure 9.



Figure 9

14. Carefully separate the luggage side lower finisher from the upper finisher, as shown in Figure 10.



Figure 10

15. Remove the paper backing from one of the rear seat belt warning labels and apply it to the rear seat belt retractor, as shown in Figure 11.

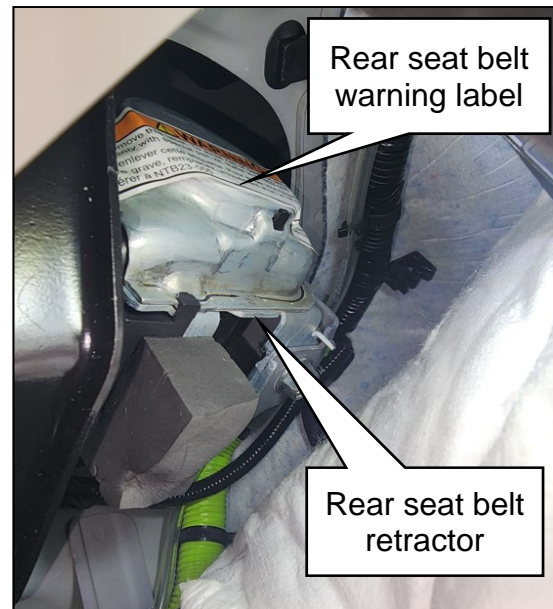


Figure 11

16. Reinstall the luggage side lower finisher.
17. Reinstall the rear door body side welt (weather strip).
18. Reinstall the rear side air bag (bolster).

IMPORTANT: When reinstalling the rear side air bag (bolster), be sure the upper retainer is locked into place by pulling the upper side of the bolster forward (toward the front of the vehicle).

- a. Raise the rear seat back assembly.
- b. Torque the rear side air bag (bolster) bolt.
 - o Rear side air bag (bolster) bolt torque: 25 N•m (2.6 kg-m, **18 ft-lb**)



Figure 12

IMPORTANT: Do NOT remove **Black** lower rear seat belt anchor bolts.

19. Remove the **Silver** lower rear seat belt anchor bolt and washer from the anchor plate.
- Discard the original washer.



Figure 13

20. Install the new washer onto the **Silver** lower rear seat belt anchor bolt, and install the bolt and washer onto the anchor plate.
- a. Remove the paper backing from the rear seat belt warning label.
 - b. Place the rear seat belt warning label hole around the anchor plate bolt hole, as shown in Figure 14.

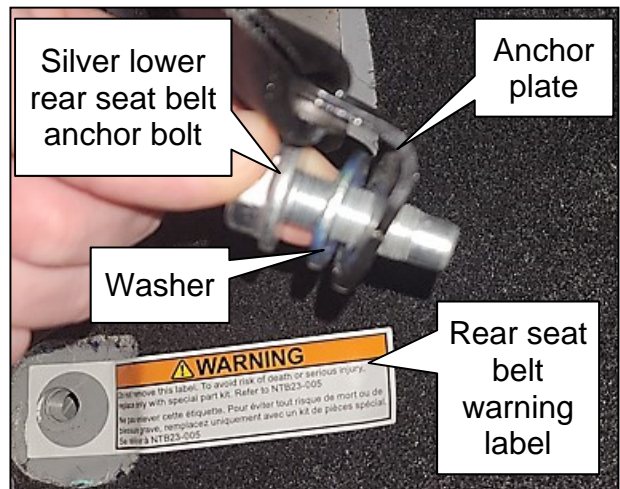


Figure 14

21. Reinstall the lower rear seat belt anchor.
- Make sure the seat belt webbing is not twisted.
 - Make sure the anchor plate is positioned parallel to the door opening, as shown in Figure 15.
 - Reinstall and torque the lower rear seat belt anchor bolt.
 - Lower rear seat belt anchor bolt torque 85 N•m (8.6 kg-m, **63 ft-lb**)

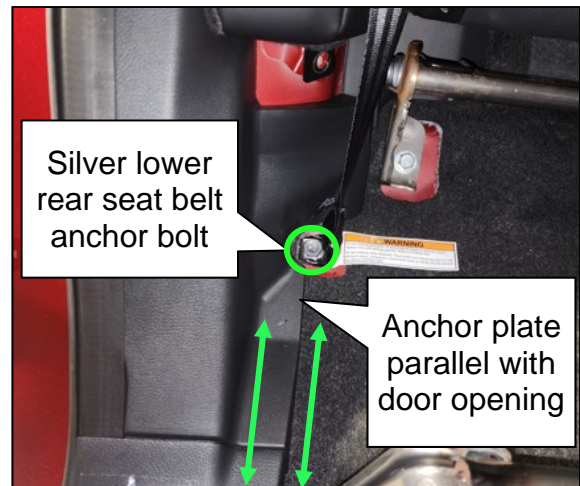


Figure 15

22. Reinstall the rear seat bottom cushion.
 - Refer to the ESM: **BODY INTERIOR > SEAT > REMOVAL AND INSTALLATION > REAR SEAT > Removal and Installation**

23. Reconnect the positive battery terminal.
 - Positive battery terminal nut torque: 5.39 N•m (0.55 kg-m, **48 in-lb**)

24. Reconnect the negative battery terminal.
 - Negative battery terminal nut torque: 8.00 N•m (0.82 kg-m, **71 in-lb**)

25. Perform **ADDITIONAL SERVICE WHEN REMOVING BATTERY NEGATIVE TERMINAL**.
 - Refer to the ESM: **ELECTRICAL & POWER CONTROL > POWER SUPPLY, GROUND & CIRCUIT ELEMENTS > BASIC INSPECTION > INSPECTION AND ADJUSTMENT > ADDITIONAL SERVICE WHEN REMOVING BATTERY NEGATIVE TERMINAL > Required Procedure After Battery Disconnection**

PARTS INFORMATION

DESCRIPTION	PART NUMBER	MAX ALLOWED
LABEL – SEAT BELT	98590-6RR0A	2 (1)
WASHER	08915-4421A	2

- (1) Order a quantity of one (1) per side affected. Labels are packaged two (2) per quantity ordered.

CLAIMS INFORMATION

Submit a “CM” line claim using the following claims coding:

CAMPAIGN (“CM”) ID	DESCRIPTION	OP CODE	FRT
PC978	Replace lower rear seat belt anchor bolt washer and install warning labels one (1) side	PC9782	0.5
	Replace lower rear seat belt anchor bolt washer and install warning labels two (2) sides	PC9783	0.7

AMENDMENT HISTORY

PUBLISHED DATE	REFERENCE	DESCRIPTION
May 25, 2023	NTB23-046	Original bulletin published
September 19, 2023	NTB23-046A	Changes made throughout

