

APA4 - Check Connection Points on the Body and Rework if Necessary (Recall Campaign)

Vehicle Type: **Taycan 4S (Y1A) / Taycan GTS (Y1A) / Taycan Turbo (Y1A)**

Model Year: **As of 2020 up to 2023**

Concerns: **Connecting points on the body**

Cause: **There is a possibility that individual connection points on the body were not executed on the affected vehicles due to a process error in production.**

If this is the case, this could lead to insufficient strength of the body in the event of a crash under certain preconditions. An increased risk of injury to the occupants could not be ruled out.

Action:

- Check connection points **on the A-pillar(Scope 1)**
- Check connection points **on the A-pillar** and rework **body(scope 2)**

Affected Vehicles: Only vehicles assigned to the campaign (see also PCSS Vehicle Information).

Required parts

No parts are required for the **inspection** of the connecting points.



Information

Depending on the test result and due to the different connections points of each vehicle to be reworked, the required connecting rivets and screws are listed in the relevant scope.
For this, see Warranty processing.

Required tools

Tools:

- Torque wrench, 2-10 Nm (1.5-7.4 ftlbs.), e.g. **VAG 1783 torque wrench, 2-10 Nm (1.5-7.4 ftlbs.)**
- Torque wrench, 6-50 Nm (4.5-37 ftlb.) e.g. **VAG 1331A torque wrench, 6-50 Nm (4.5-37 ftlb.)**

All other required (special) tools can be found in the relevant Workshop Manual.

Scope 1: Check connection points on the A-pillar**Information**

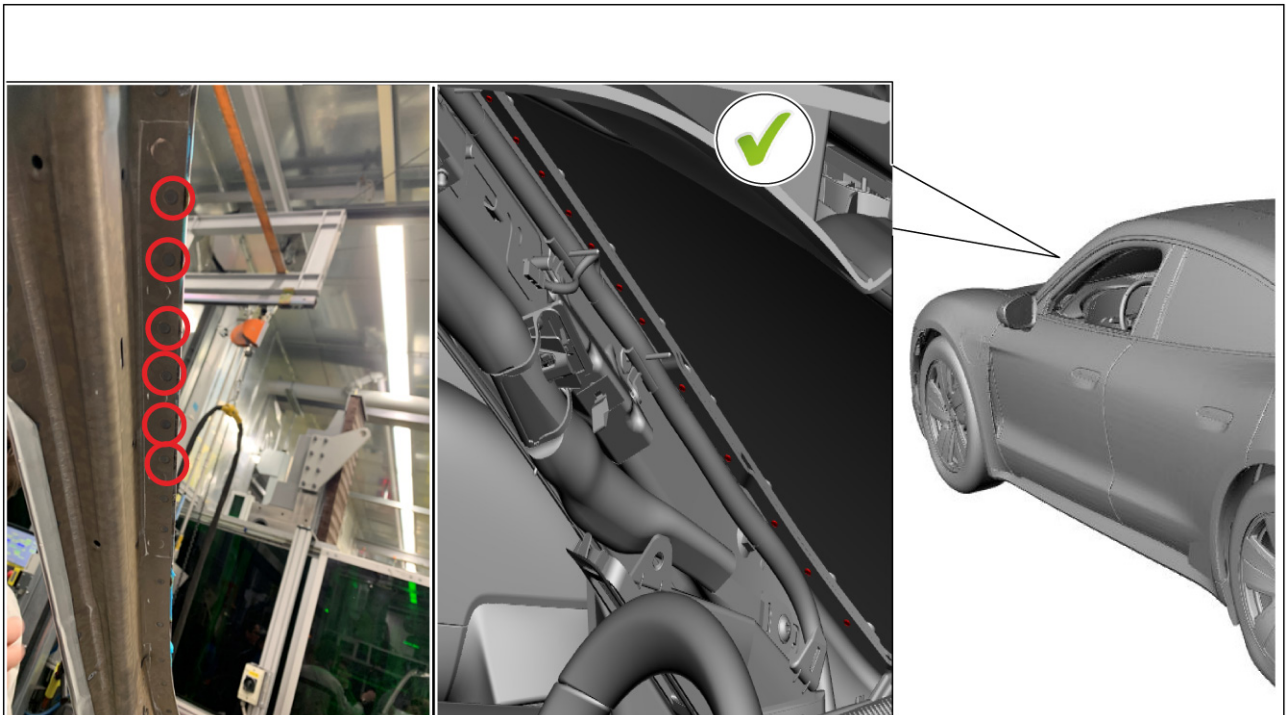
Due to a process error in production, there is a possibility that **connection points** were not set at several points on the **A-pillar** and in the area of the **B, C and D-pillars on the left and right**.

If the resistance points on the A-pillar were set according to specifications, all other connection points are therefore also present on the B, C and D-pillars on the left and right.

For **checking** resistance points, it is therefore sufficient to check **only one A-pillar**.

Work Procedure: 1 Remove A-pillar trim panel on the left. → *Workshop Manual '705719 Remove and install A-pillar trim panel'*

2 **Visually inspect resistance points** in the marked area of the left A-pillar.



Visual inspection of resistance points on A-pillar

Assessment	Action
The A-pillar has resistance points .	All connection points are set according to specifications and do not have to be reworked. End of remedial action. ⇒ Continue with Step 3 [Scope 1]
No resistance points present on the A-pillar.	Connecting points are not set according to specifications. The A-B-C pillars and rear side sections must be reworked . ¹ ⇒ Continue with repair instructions from APA4 PPN document [Scope 2]

- 1 Perform photo documentation and upload the clearly identifiable pictures to the PCCS quality line with the relevant **description** of the affected side, e.g. **A-pillar left_VIN_Figure 1**



Information

Porsche Centers that hand over the vehicle to an external service provider to carry out the body work are asked to observe the following points:

- The preliminary work must be carried out by the Porsche Center.
 - Before handing over the vehicle, the affected area must be marked using a marking pen.
 - Record details of the affected area in the order form or pass this Technical Information on to your service provider if necessary.
 - The scope of rework to be performed by the service provider must be limited to the affected area so that no large surface areas are reworked.
- 3 Install A-pillar trim panel on the left. ⇒ *Workshop Manual '705719 Remove and install A-pillar trim panel'*
 - 4 Enter the campaign in the Warranty and Maintenance logbook.

End of remedial action

For warranty processing, see **General information on warranty processing** and **Scope 1** in the section ⇒ *Technical Information '705719 Warranty processing'*.

Warranty processing

Scope 1: **Check connection points on the A-pillar**

Check connection points on the A-pillar

Labor time: **48 TU**

Includes: Remove and install A-pillar trim panel

⇒ **Damage Number APA4 099 000 1**

Scope 2:

Check connection points on the A-pillar and rework body



Information

Please invoice the rework for restoring the connection points via Scope 2 of this campaign in WWS. This will ensure that the campaign is documented as Completed in the systems.

Labor costs incurred can be invoiced using a **reimbursement claim for the original campaign claim** for this action.

Check connection points on the A-pillar and rework body

Labor time: **0 TU**

Includes: Remove and install A-pillar trim panel
Remove and install B-pillar trim panel
Remove and install C-pillar trim panel
Remove and install roof trim panel
Remove and install side window
Remove and install rear side trim panel
Remove and install windshield

Required part numbers: *	Designation – Location	Quantity
PAF009461	Blind rivet – A-pillar and C-pillar	As required
PAF009075	Blind rivet – Rear side section	As required
PAF009076	Blind rivet – D-pillar and rear roof	As required

Outsourced labor: (only if necessary)

Restoring connection points and performing surface treatment

Outsourced labor
time: **0 TUs****

*If other parts are required to carry out the action, please refer to the corresponding workshop manuals in the PCSS and PET Parts Catalogue. Any additional costs incurred must then be invoiced using the reimbursement claim.

**Outsourced labor time incurred must be remunerated based on the individual warranty charging rate of the respective Porsche Center and invoiced using the reimbursement claim. Please include a copy of the subcontractor's invoice with the warranty claim.

⇒ **Damage Number APA4 099 000 1**

Examples
of correctly
performed
welds



Example 1



Example 2



Example 3



Example 4



Example 5



Example 6



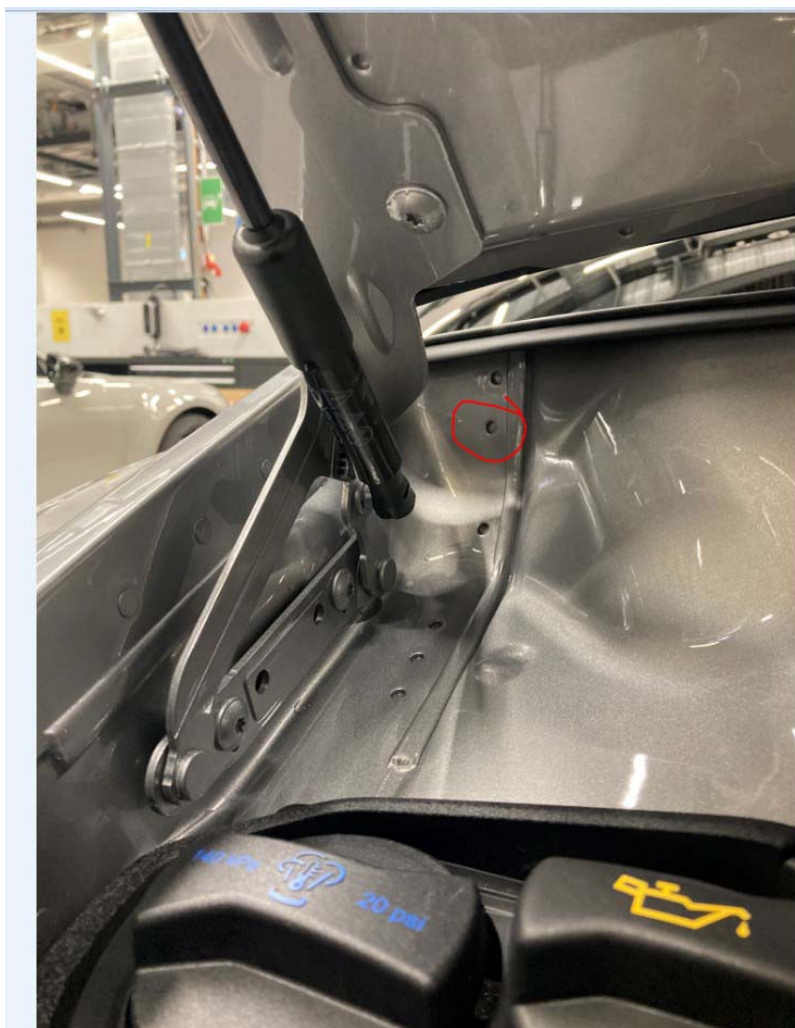
Example 7



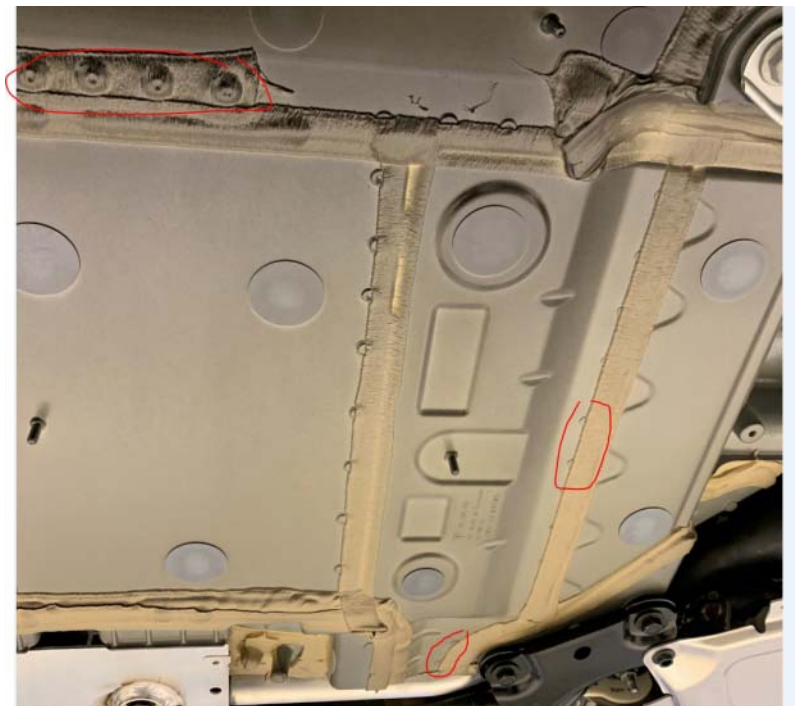
Example 8



Example 9



Example 10

*Example 11**Example 12*

Important Notice: Technical Bulletins issued by Porsche Cars North America, Inc. are intended only for use by professional automotive technicians who have attended Porsche service training courses. They are written to inform those technicians of conditions that may occur on some Porsche vehicles, or to provide information that could assist in the proper servicing of a vehicle. Porsche special tools may be necessary in order to perform certain operations identified in these bulletins. Use of tools and procedures other than those Porsche recommends in these bulletins may be detrimental to the safe operation of your vehicle, and may endanger the people working on it. Properly trained Porsche technicians have the equipment, tools, safety instructions, and know-how to do the job properly and safely. Part numbers listed in these bulletins are for reference only. The work procedures updated electronically in the Porsche PIWIS diagnostic and testing device take precedence and, in the event of a discrepancy, the work procedures in the PIWIS Tester are the ones that must be followed.

© 2023 Porsche Cars North America, Inc.