

**PLEASE READ - Attention All Mazda Dealers:**

**If you have any questions about this Repair Procedure or the Scan Tool, please fill out Dealer Recall Help on OneMazda**

**On all CX-30 vehicles, you must use the Repair Calculator for recall 5823D available in MGSS. The requirements to complete the inspection of this repair are below:**

- 1. Review the video links in this repair procedure showing how to use the Scan Tool.**
- 2. A working, Windows laptop with Microsoft Excel or Google Sheets.**
- 3. The SST Scan Tool sent to Mazda dealers**
- 4. Use the Scan Tool with the black cable only, please do not use the “Bluetooth” dongle in the SST Scan Tool box as it does not work (red X in the box photo).**

**There may be cosmetic differences with some Scan Tools, but they all are similar in appearance and function. The instructions in the box are NOT NEEDED.**



**Safety Recall 5823D – 2022-2023 CX-30 and 2023 CX-50 Brake Pedal Travel May Increase**

**A. VEHICLE INSPECTION PROCEDURE – AND PREPERATION FOR REPAIR**

1. Verify that the vehicle is within the following ranges and there is a Not Launched or OPEN 5823D recall in eMDCS:

**SUBJECT VEHICLES**

Model	Subject VIN range	Subject production date range
2022-2023 CX-30	3MVDMBDL* NM 459744 – 459745 3MVDM**** PM 514284 – 519945	From November 28, 2022 through December 15, 2022
2023 CX-50	7MMVA**** PN 128031 – 128823	From December 3, 2022 through December 7, 2022

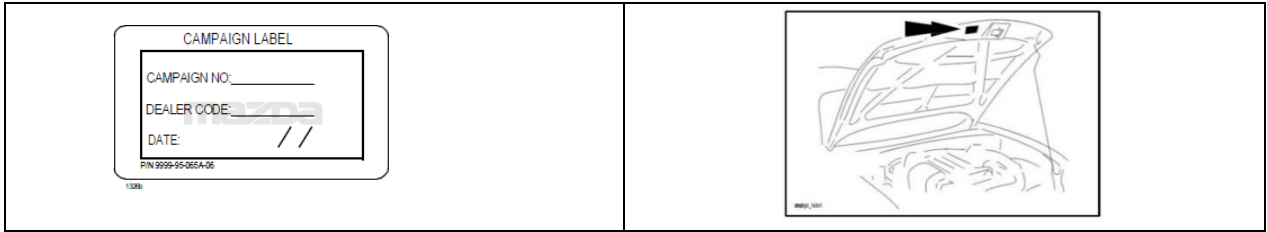
The asterisk symbol “\*” can be any letter or number.

**Repair Procedure – Brake Pedal Travel May Increase  
Safety Recall 5823D**

- If the vehicle is one of the above listed ranges and 5823D is OPEN or Not Launched in eMDCS, proceed to Step 2. If the vehicle **does not** have an OPEN or Not Launched 5823D campaign, return vehicle to the customer or inventory.

2. Perform an eMDCS Warranty Vehicle Inquiry and inspect the vehicle for a Campaign Label with **5823D** attached to the vehicle’s hood, driver door or firewall.

**NOTE:** Be sure to verify the campaign number as the vehicle may have multiple campaign labels.



**eMDCS - Warranty Vehicle Inquiry Results:**

If eMDCS displays:	Campaign Label is:	Action to perform:
If no repair date is displayed on the line with CAMPAIGN 5823D, it has not been completed on this vehicle	Present	Fill out Dealer Recall Help on OneMazda contact or the Mazda Warranty Department at <a href="mailto:warrantydept@mazdausa.com">warrantydept@mazdausa.com</a> to review vehicle history.
	Not present	Proceed to "REPAIR PROCEDURE".
If repair date is displayed for CAMPAIGN 5823D is "CLOSED"	Present	Return vehicle to inventory or customer.
	Not present	Complete a label and apply to vehicle's hood with repair date and dealer code from eMDCS Warranty Inquiry.
CAMPAIGN 5823D is not displayed	See Action	<b>The vehicle is not affected by Recall 5823D</b>

**REPAIR OUTLINE**

CX-30 Vehicles: The repair is to inspect the serial number with the provided SST Scan Tool, then determine if the vehicle needs repair.

CX-50 vehicles: The repair is to replace the DSC HCU (ABS HCU) Module on all 9 affected vehicles.

**GENERAL CAUTIONS/WARNINGS – PLEASE READ:**



**Air Bag Connectors and Battery Disconnect:** Do not work on the vehicle without disconnecting the vehicle battery as this could result in damage to the vehicle or safety systems.

**Customer Personal Items:** If personal belongings need to be removed from vehicle interior trunk area or inside, please remember to neatly replace any customer items in the same location after the repair is completed.

**Damage to interior or exterior:** Care should be taken, and protective cover(s) used when working on any Mazda vehicle. Damage to any components, interior trim, body panels and paint will not be reimbursed by Mazda.

**All of these items above could delay repairs, compromise safety, as well as negatively affect the customer experience and Mazda dealer-customer relationship.**

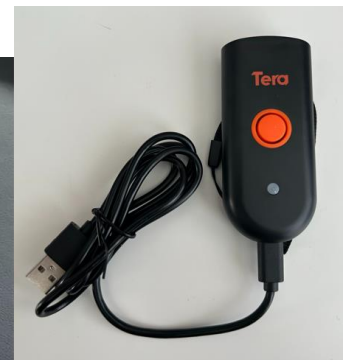
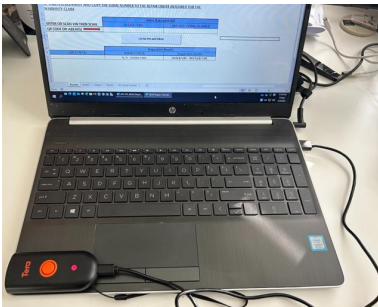
**B. REPAIR PROCEDURE – CX-50 ONLY.**

1. Follow the steps in MGSS to replace the ABS HCU unit on the vehicle. [CX-50 ABS HCU \(DSC HU/CM\) REMOVAL AND REPLACEMENT](#)
2. Move to Section D “CAMPAIGN LABEL INSTALLATION to attach a completed campaign label to the vehicle firewall, driver door jamb or radiator crossmember.

**C. REPAIR PROCEDURE – CX-30 ONLY.**

**REQUIRED TOOL INFORMATION**

No.	Part Names (CX-30 vehicles ONLY)
①	Laptop with Windows 7 or 10 with Microsoft Excel or Google Sheets
②	USB SST Scan Tool with the supplied cable (do not use the USB Dongle for connection)

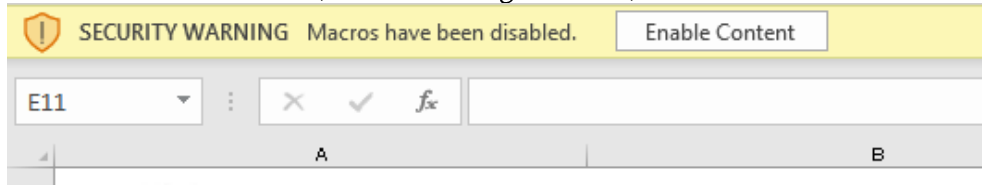


A working Windows laptop and Microsoft Excel or Google Sheets is required for this repair.

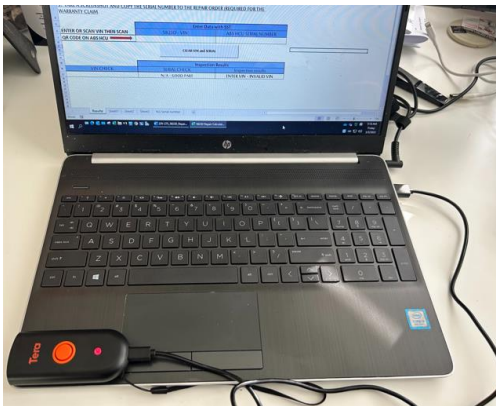
**Repair Procedure – Brake Pedal Travel May Increase  
Safety Recall 5823D**

1. Obtain the SST Scan Tool from your Tool Shed and a Windows Laptop, with Microsoft Excel or Google Sheets installed.
2. Disconnect the vehicle battery cable following the procedure in MGSS. [NEGATIVE BATTERY DISCONNECT](#)
3. **With the laptop computer Open the Repair Calculator from MGSS in Excel or Google Sheets.** Enable all MACROS if needed. If you need to use Google sheets, [click here for a tutorial on loading the Repair Calculator using Google Sheets.](#)

a. In the Calculator, Excel or Google Sheets, "Enable Content" to Enable Macros



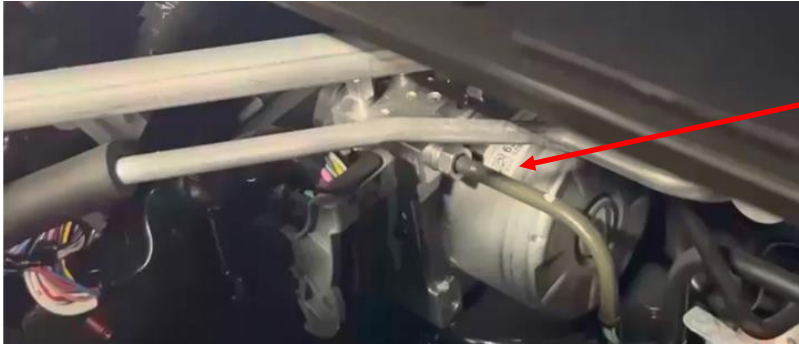
4. Connect the black USB cable to the USB Scan Tool and the Windows Laptop.  
***ONLY USE THE BLACK USB CABLE, DO NOT USE THE USB WIRELESS DONGLE***



5. Scan the barcode on the driver door jamb using the SST Tool. The VIN check must state "VALID 5823D VIN" to proceed.

<b>ENTER OR SCAN VIN THEN SCAN QR CODE ON ABS HCU</b>	<b>Enter Data with SST</b>	
	5823D - VIN	ABS HCU SERIAL NUMBER
	3MVDMBBCM7PM515003	
	CLEAR VIN and SERIAL	
	<b>Inspection Results</b>	
VIN CHECK	SERIAL CHECK	Inspection results
VALID 5823D VIN	N/A - GOOD PART	ENTER VIN - INVALID VIN

3. With the hood raised, place the Laptop on the Engine Cover with the USB Scan Tool Connected. Locate the ABS Unit (DSC HCU) under the rear LH side engine bay. You will need to scan the QR Code on the ABS Unit.



4. Place the cursor in the “ABS HCU SERIAL NUMBER” Field. Using the Barcode Scanner, Press and Hold the Orange button and scan the QR Code on the ABS Unit (DSC HCU). [Click here to watch a video on how to scan the QR code.](#)

Enter Data with SST		
ENTER OR SCAN VIN THEN SCAN	5823D - VIN	ABS HCU SERIAL NUMBER
QR CODE ON ABS HCU →	3MVDMBBCM7PM515003	<input type="text"/>
CLEAR VIN and SERIAL		
Inspection Results		
VIN CHECK	SERIAL CHECK	Inspection results
VALID 5823D VIN	N/A - GOOD PART	ENTER VIN - INVALID VIN

5. Scanning the ABS HCU Serial Number. There will be 2 outcomes:

- a. If the results state “GOOD PART, DO NOT REPLACE”:
  - i. Copy the serial number to the repair order
  - ii. Take an exact screenshot of below and save for the warranty claim AS IT MUST BE ATTACHED AND WILL BE VERIFIED PRIOR TO ACCEPTANCE
  - iii. Click on “CLEAR VIN AND SERIAL” and close the Calculator
  - iv. Proceed to section D and install a campaign label.

**3. TAKE A SCREENSHOT AND COPY THE SERIAL NUMBER TO THE REPAIR ORDER (REQUIRED FOR THE WARRANTY CLAIM)**

Enter Data with SST		
ENTER OR SCAN VIN THEN SCAN	5823D - VIN	ABS HCU SERIAL NUMBER
QR CODE ON ABS HCU →	3MVDMBBCM7PM515003	0227062102636240022232201761
CLEAR VIN and SERIAL		
Inspection Results		
VIN CHECK	SERIAL CHECK	Inspection results
VALID 5823D VIN	N/A - GOOD PART	GOOD PART, DO NOT REPLACE

**Repair Procedure – Brake Pedal Travel May Increase  
Safety Recall 5823D**

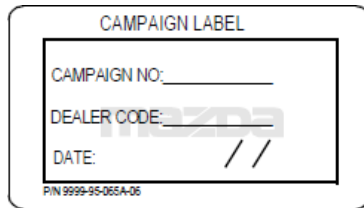
- b. If the Inspection results state “REPLACE PART # DGYB437A0”:
  - i. Copy the serial number to the repair order
  - ii. Take an exact screenshot of below and save for the warranty claim AS IT MUST BE ATTACHED AND WILL BE VERIFIED PRIOR TO ACCEPTANCE
  - iii. Click on “CLEAR VIN AND SERIAL” and close the Calculator
  - iv. Move to Step 6

<b>ENTER OR SCAN VIN THEN SCAN</b>		
<b>Enter Data with SST</b>		
	5823D - VIN	ABS HCU SERIAL NUMBER
<b>QR CODE ON ABS HCU</b> →	3MVDMBCM7PM515003	0227062102636240022232201760
<b>CLEAR VIN and SERIAL</b>		
<b>Inspection Results</b>		
VIN CHECK	SERIAL CHECK	Inspection results
VALID 5823D VIN	0227062102636240022232201760	<b>REPLACE PART # DGYB437A0</b>

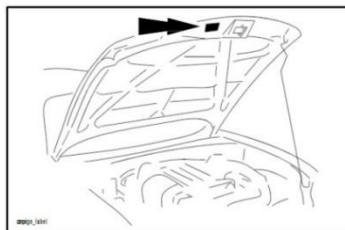
- 6. Follow the steps in MGSS to replace the ABS HCU unit on the vehicle. [CX-30 ABS HCU \(DSC HU/CM\) REMOVAL AND REPLACEMENT](#)
- 7. Move to Section D “CAMPAIGN LABEL INSTALLATION to attach a completed campaign label to the vehicle firewall, driver door jamb or radiator crossmember.

**D. CAMPAIGN LABEL INSTALLATION**

- a. Fill out a Black “Campaign Label” (9999-95-055A-06) with Campaign No: “5823D”, your dealer code, today’s date.



- b. Affix it to the hood as shown:



**END OF REPAIR PROCEDURE**