



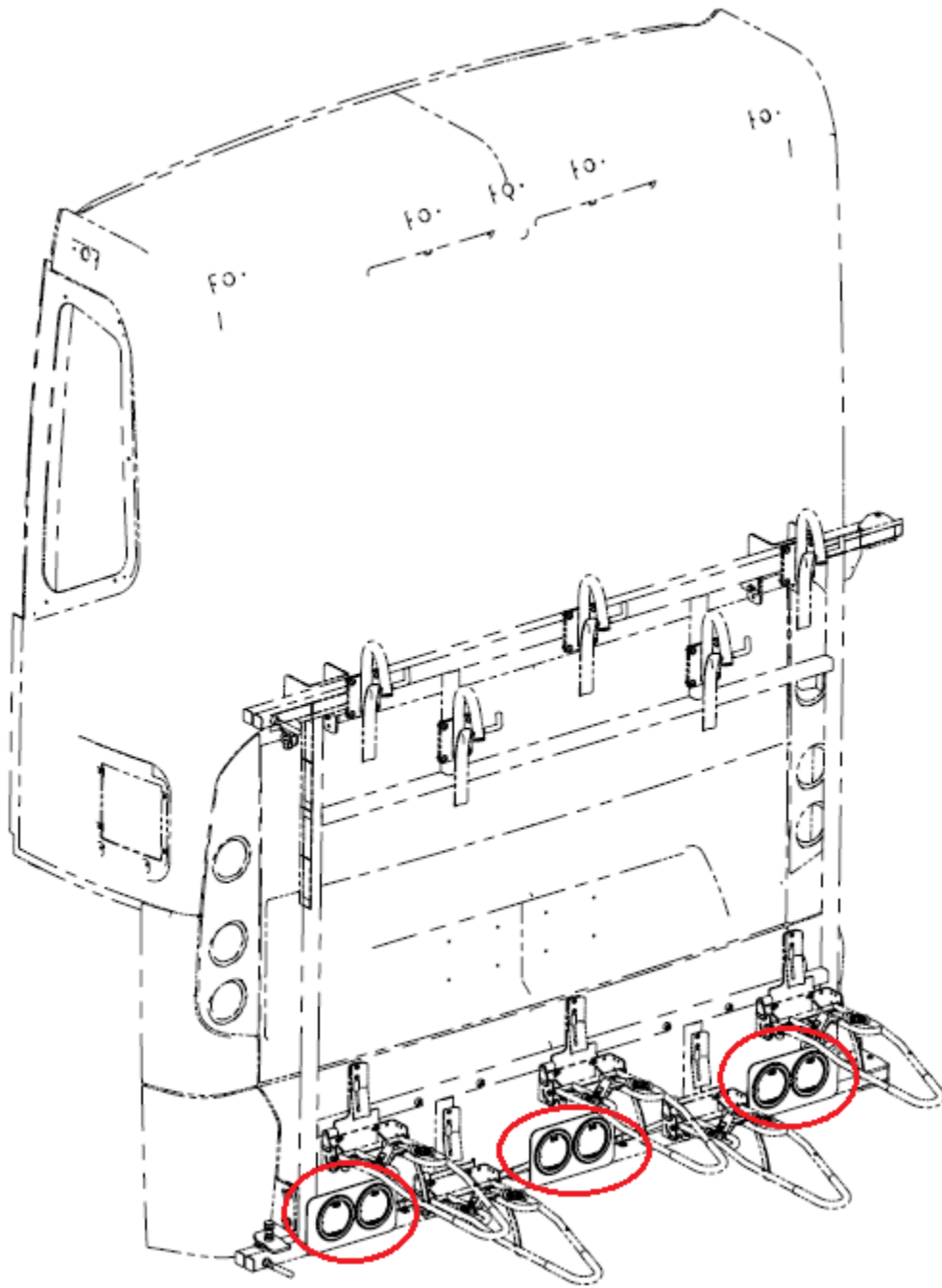
# INSTRUCTION TO SERVICE

ITS: 60725	
<b>SECTION:</b>	273 – Exterior Lights.
<b>WRITTEN BY:</b>	Scott Geier Technical Service Specialist.
<b>ISSUE:</b>	When bicycles are loaded onto the rear bike racks, can block the brake, and tell lights.
<b>SUMMARY:</b>	Install auxiliary rear brake and tell lights.

# ITS-60725

Ref. NHTSA Recall No.	Ref. Transport Canada Recall No.
23V240	Not Applicable

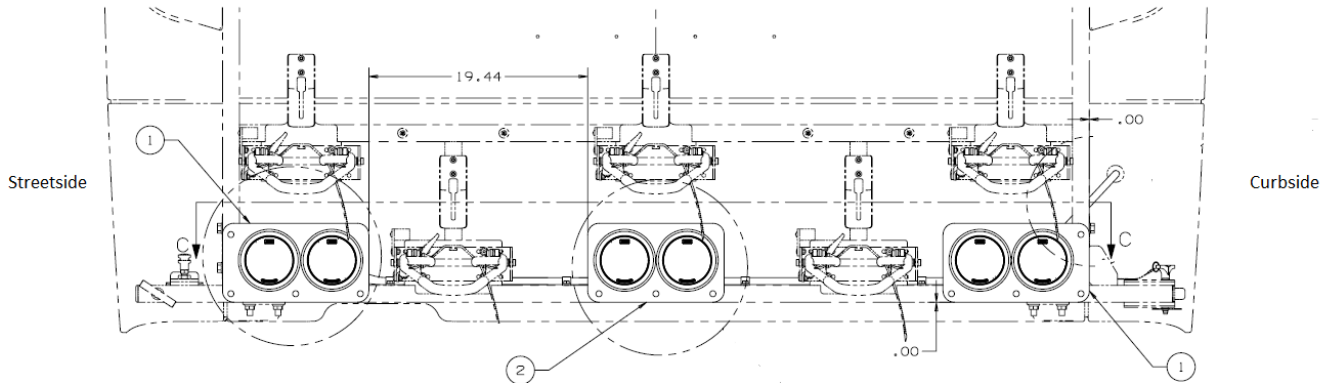
**THIS ITS DOCUMENT SHOULD BE RETAINED AND REFERRED TO FOR FUTURE MAINTENANCE UNTIL THE NEW FLYER PARTS AND/OR SERVICE MANUAL IS UPDATED TO REFLECT WORK DONE AS A RESULT OF THIS DOCUMENT. ENSURE THAT THIS DOCUMENT IS AVAILABLE FOR PARTS AND MAINTENANCE STAFF GOING FORWARD.**



ISOMETRIC VIEW  
(REFERENCE ONLY)

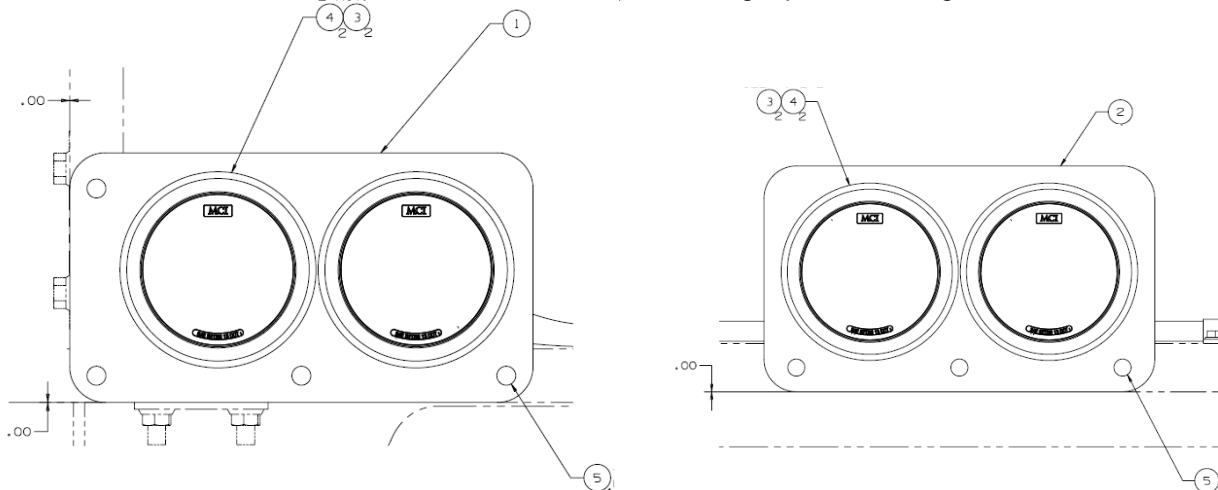
**PROCEDURE:**

1. Turn the main battery disconnect switch to the “OFF” position.
2. Using light plates (Item # 1), and (Item #2), as a templates, drill ¼ inch dia. hole through the face of the bike rack frame tube. Ensure only first of the tube is drilled through. Secure plates to the frame using rivets (Item #5). See figure 1 for light bracket installation measurements.



**Figure 1: Light brackets installation reference.**

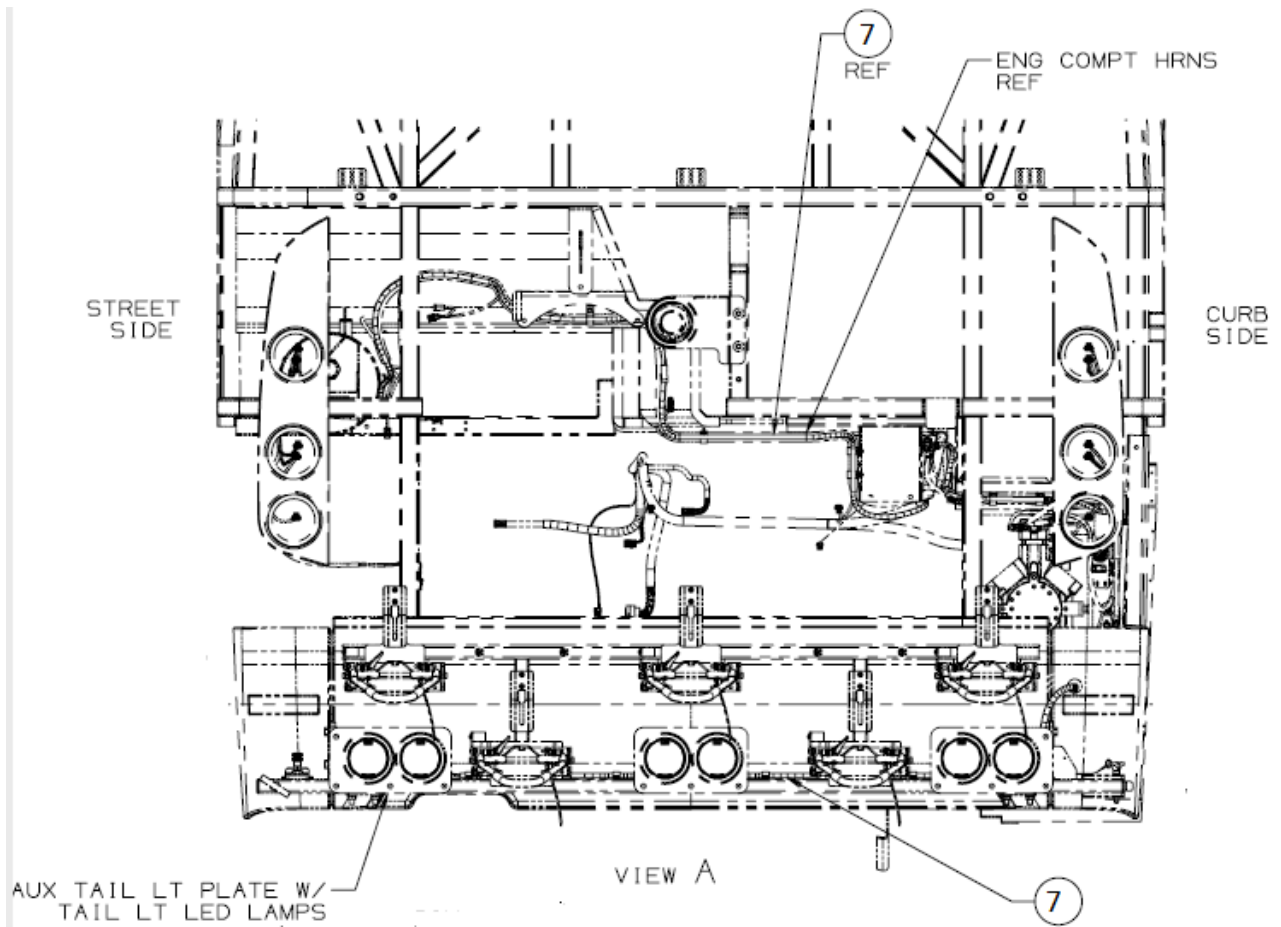
3. Install lights (Item #3) with grommets (Item #4) into the light plates. See figure 2.



**Figure 2: Lights and grommets installation reference.**



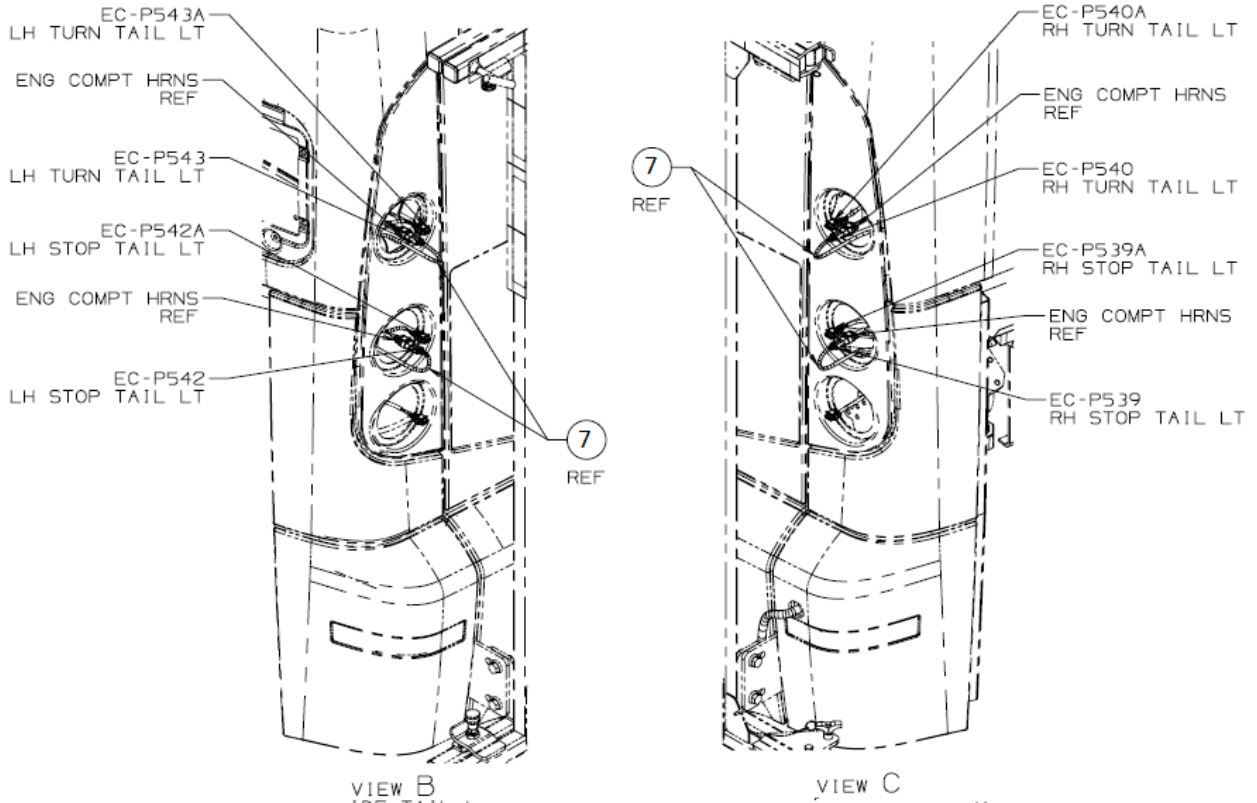
4. Route auxiliary lights rear bike harness (Item #7) from the streetside taillights to the curbside taillights along the existing engine compartment harnesses. See figure 3.



**Figure 3: Auxiliary lights rear bike harness installation reference.**



- 5. From the auxiliary lights rear bike harness (Item #7), connect EC-P539, EC-P540, EC-P542, EC-P543 to engine compartment harness. Then connect EC-P539A, EC-P540A, EC-P542A, EC-P543A to the turn, tail, and stop lights. See figures 4.



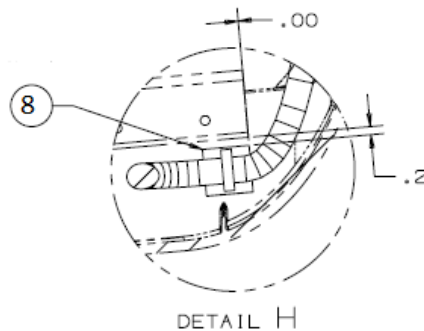
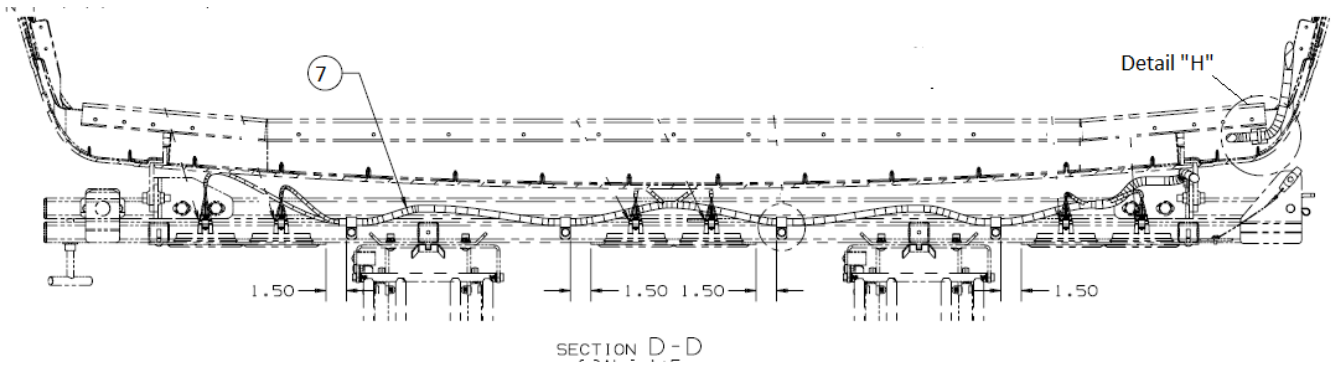
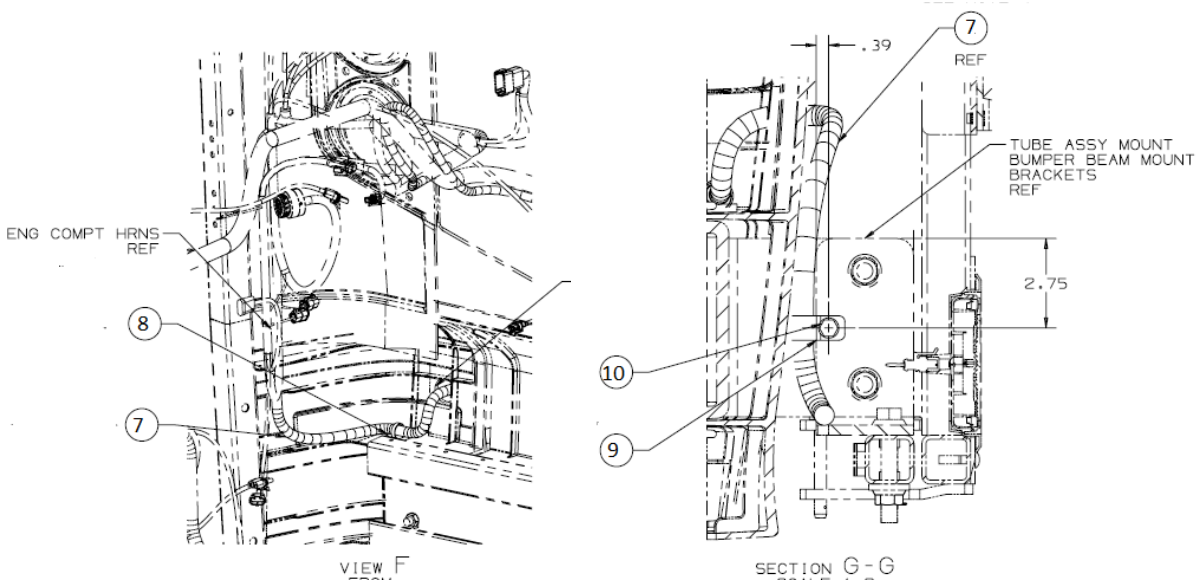
**Figure 4: Auxiliary lights rear bike harness streetside and curbside bus harness reference.**



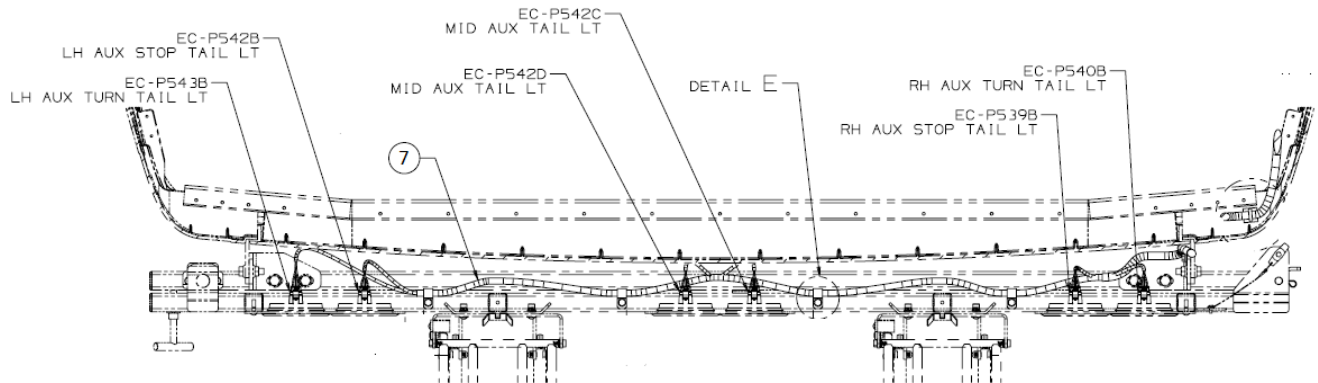
**NEW FLYER**

**INSTRUCTION TO SERVICE**

6. Route auxiliary lights rear bike harness (Item #7) through the hole in the rear bumper, along the bike rack frame as shown in view "F", section D-D, detail "H", and section G-G.
7. Drill 17/64-inch dia. hole onto the right-side bottom tube assembly bracket and bumper beam. Mount bracket using clamps (Item #9) as a guide and as per section G-G. Secure auxiliary lights bike rack harness (Item #7) in place using clamps and secure using tapping screws (Item #10).
8. Drill 17/64-inch dia. hole onto the rear bike frame using clamps (Item #9) as a guide and as per section D-D, detail "E". Secure harness using self-tapping screws (Item #10).



9. Install connectors to the rear auxiliary lights on the bike rack. See figure 5.



**Figure 5: Auxiliary lights rear bike harness connection to aux bike lights reference.**

10. Install adhesive tie base onto interior side of the curbside bumper and fasten harness using tyrap (Item #11).

**NOTE:** Clean surface where tie base will be applied with isopropyl alcohol (Item #12 NF PN: 23-05-0005) and allow 60 seconds of flash-off before applying tie base.

11. Use tyrap (Item #11) as required to secure the harnesses. Coil up any extra length in the engine compartment.
12. Apply Sikaflex (Item #12) as required to seal holes in the rear bumper.
13. Turn the main battery disconnect switch to the "ON" position.
14. Start the bus and perform brake, turn, and tell light function test.



LABOUR ESTIMATE				
	Operation	Number of Technician(s)	Hours	Labor Time T X HR
1	Install auxiliary rear brake and tell lights.	1	1.50	1.50

PARTS REQUIRED					
Item	Part Number	Description	Qty. per Coach	Units	Notes
1	1023667	PLATE-LIGHT L/R	2	EA	
2	1023712	PLATE-LIGHT CENTER	1	EA	
3	07-07-1932	LAMP - TAIL LIGHT, LED	6	EA	
4	07-07-1941	GROMMET	6	EA	
5	336379	RIVET-HUCKLOK 1/4" .187-.437	12	EA	
7	1024592	HRNS-AUX LTS REAR BIKE RACK	1	EA	
8	19-04-0283	TIE BASE - ADH MT	1	EA	
9	19-04-0451	CLAMP-LINE SUPPORT 9/16" I.D, SILICONE COVERED, ORA	5	EA	
10	19-1-529	SCREW-TAPPING, THREAD ROLLING, DOG POINT	5	EA	
11	19-11-258	TYRAP-7.31" LONG, BLACK	26	EA	
12	23-02-0016	SIKAFLEX - UV BLACK	0.010	OZ	
13	23-05-0005	ALCOHOL - ISOPROPYL	0.010	OZ	