

Recall Campaign Bulletin



Mercedes-Benz

Campaign No. 2023040009, April 2023

TO: ALL MERCEDES-BENZ CENTERS

SUBJECT: **Model S-Class (223 platform)**
Model Year 2021

Rework the Primary Bulkhead Sealing

Mercedes-Benz AG (“MBAG”), the manufacturer of Mercedes-Benz vehicles, has determined that on certain Model Year (“MY”) 2021 S-Class (223 platform) vehicles, the primary bulkhead sealing might not meet the specifications for water intrusion. In this case, water exposure might lead to water ingress into the vehicle’s interior and cause corrosion on electrical contacts and/or short circuits or leakage currents. As a result, the function of the PreSafe system (e.g. seatbelt tightening and seat adjustment) might be impaired which could increase the risk of injury in the event of a crash. In addition, it may not be possible to restart a parked vehicle. When the issue occurs, the customer might notice damp carpets in the front footwells or fogged windows. The driver might also be made aware through a warning message in the instrument cluster. An authorized Mercedes-Benz dealership will rework the primary bulkhead sealing on the affected vehicles.

Prior to performing this Campaign:

- **VMI must be checked before performing campaigns to verify that the campaign is required on a specific vehicle. Always check for any other open campaigns, and perform accordingly.**
- Please review the entire Campaign bulletin and follow the repair procedure exactly as described.

Approximately 6 vehicles are affected.

Order No. P-RC- 2023040009

Recall Campaign Bulletin

Recall Campaign Bulletin

Recall Campaign Bulletin

Recall Campaign Bulletin

Recall Campaign Bulletin

Rework the Primary Bulkhead Sealing

Work Procedure

1. Remove left and right wiper arms.
i For basic data, see AR82.30-P-6100S
2. Remove air/water duct under windshield and struts (A, B and C, Figure 1).
i For basic data, see AR82.30-P-0001S

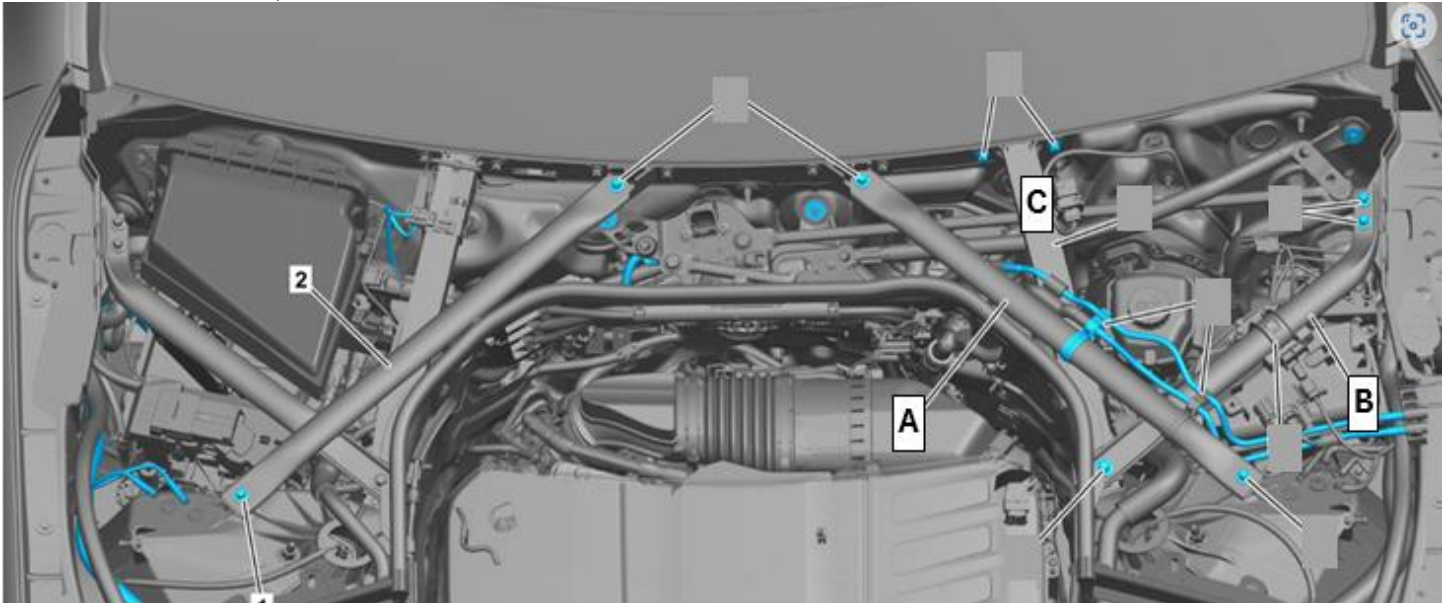


Figure 1

3. Check removed air/water duct.

i Drain (1, Figure 2) of air/water duct at driver's side **must** be closed.

i If drain (2, Figure 2.1) is open, it **must** be replaced.



Figure 2 Drain of air/water duct OK



Figure 1.1 Drain of air/water duct not OK

4. Unscrew ground line at firewall (Figure 3).

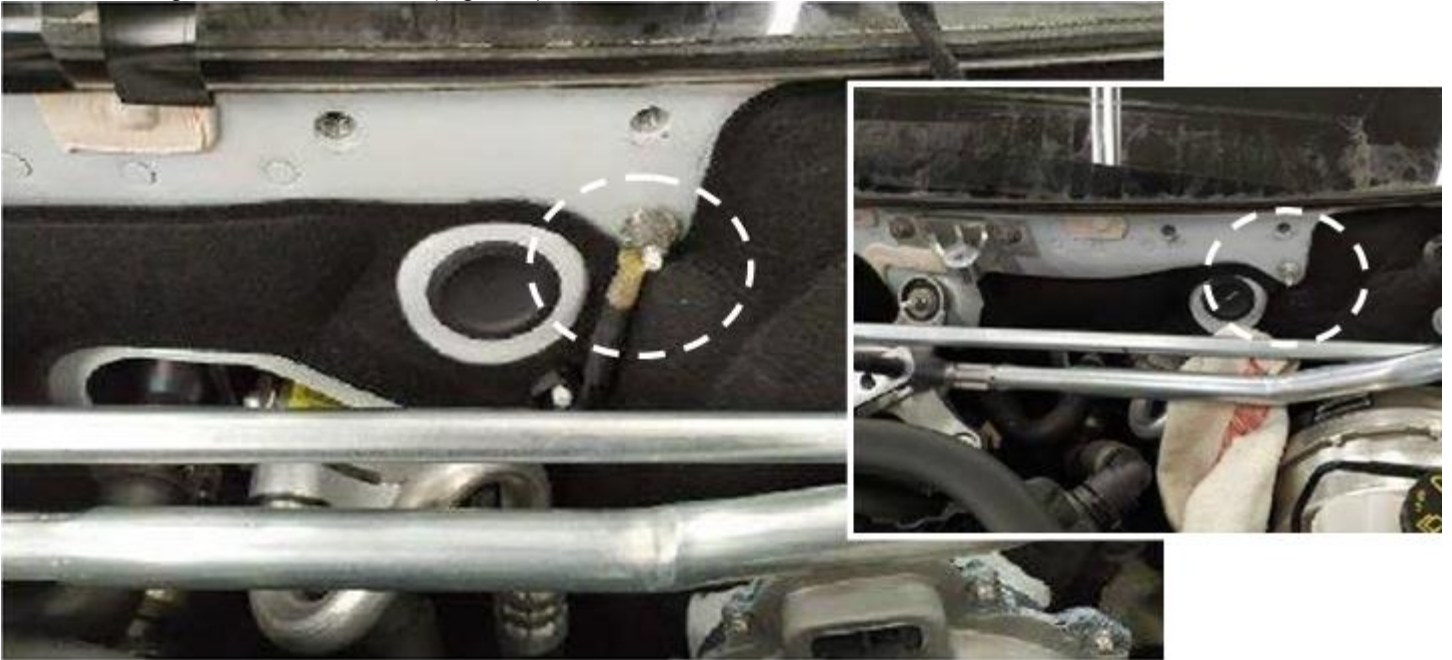


Figure 2

5. Cut off an approx. 2 cm wide section of insulating mat as shown (Figure 4).

i Cut off insulating mat below ground bolt.

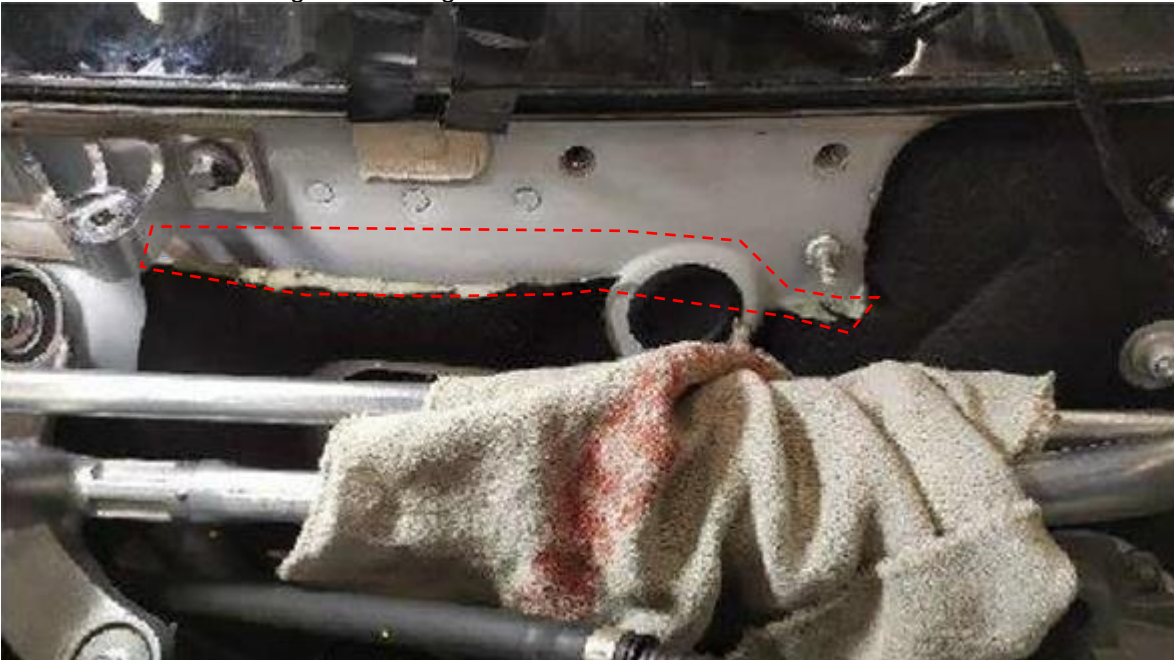


Figure 3

6. Bond insulating mat at cut edge to firewall using Teroson adhesive and also coat cut edge with Teroson adhesive (Figure 5, 6).

i Apply adhesive with a disposable glove.



Figure 4, adhesive application example



Figure 5

7. Screw ground line onto firewall again (Figure 7).



Figure 6

8. From the firewall side, feed water deflector under wiper linkage until it is positioned as shown (Figure 8, 9).

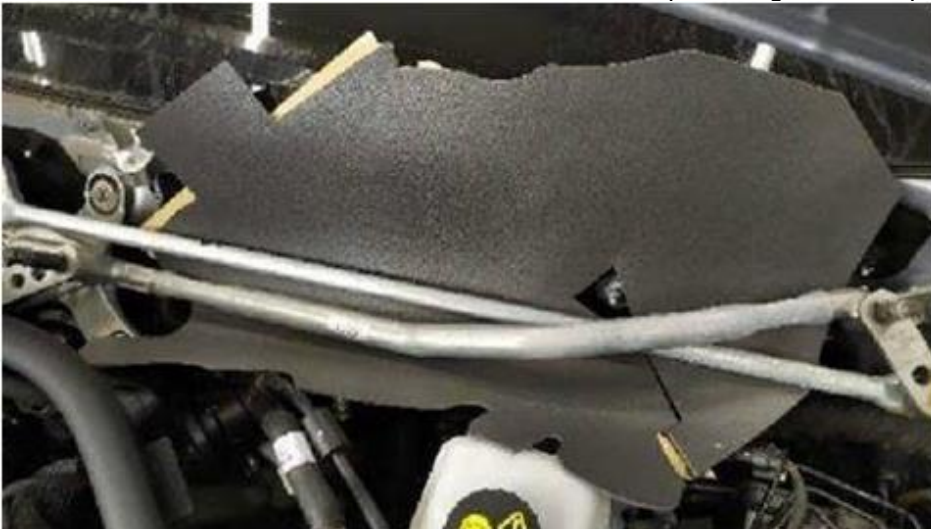
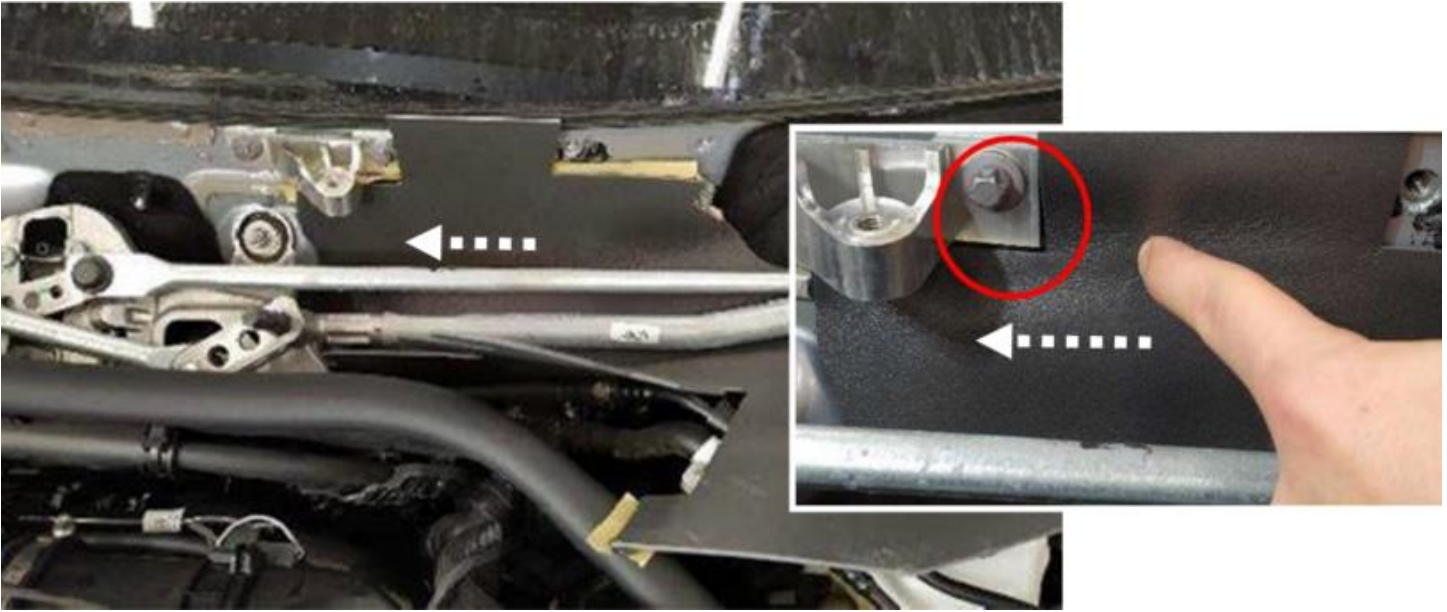


Figure 8



Figure 7

9. Water deflector is moved under wiper linkage towards vehicle center (Figure 10) until corner of water deflector is in contact with mounting support of strut.

**Figure 8**

10. On the driver's side, the water deflector is folded in directly behind the end of the butyl tape so that the fold is in contact with the brake booster (Figure 11).

**Figure 9**

11. Fold water deflector at front side as shown so that hoses are covered (Figure 12).



Figure 10

12. Engage water deflector as shown at mount of wiper linkage (Figure 13, 14).



Figure 11



Figure 12

13. Remove wax paper from butyl tape and bond water deflector to firewall (Figure 15).

i Firmly press on water deflector.

i First position corner of water deflector (Figure 16) and press onto firewall.



Figure 13



Figure 14

14. Install struts (B and C, Figure 17).

i For basic data, see AR82.30-P-0001S



Figure 15

15. Wrap water deflector around strut (C, Figure 18) so that strut is tightly enclosed.



Figure 16

16. Remove butyl tape and bond tongue of water deflector under tension to strut (C, Figure 19, 20 and 21) so that it fits closely with strut.



Figure 17, with heated washer fluid reservoir



Figure 18, with heated washer fluid reservoir



Figure 19, without heated washer fluid reservoir

17. Install strut (A, Figure 22).

i For basic data, see AR82.30-P-0001S



Figure 22

18. Check whether water deflector is in contact at relevant locations (Figure 23), and correct if necessary.

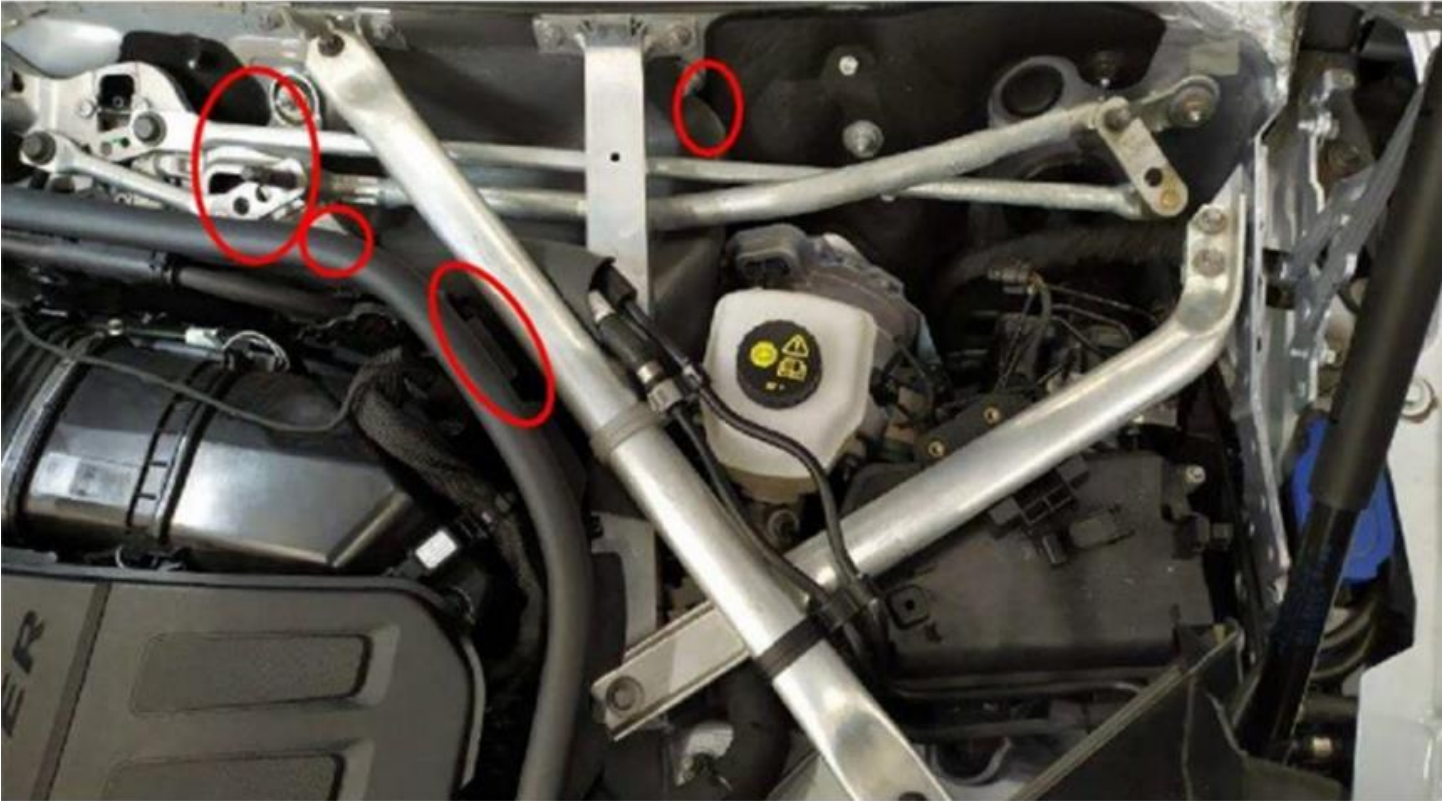


Figure 20

18. Install air/water duct and wiper arms (Figure 24).

i For basic data, see AR82.30-P-6100S



Figure 21

Primary Parts Information

Qty.	Part Name	Part Number
As required (1)	Air/water duct LHD under windshield wiper with code 874	A 223 831 23 00
As required (1)	Air/water duct LHD under windshield wiper without code 874	A 223 831 62 00
1	Sealing adhesive	A 003 989 01 71 09
1	Water deflector LHD	A 223 835 28 00

i Small parts such as screws, lock nuts, sealing rings, cable ties, fluids, sealant, etc. are not listed in the parts list. The required small parts are taken into account in the budgeting.

i **Note:** *The following allowable labor operation should be used when submitting a warranty claim for this repair.*

Warranty Information

Damage Code	Operation Number	Description	Labor Time (hrs.)
62 901 02	12-1678	Retrofit water deflector at firewall	1.7

i **Note:** *Always check Xentry Operation Time (XOT) for the current OP-Code times. Labor times are subject to change and updates may not be reflected in this document.*