

**May 16, 2023**

Version 2

## Safety Recall: 2020–22 Multi-Model Door Mirror Glass

Supersedes 23-035, dated April 28, 2023, to revise the information highlighted in **yellow**.

### AFFECTED VEHICLES

Year	Model	Trim	VIN Range
2020–22	Odyssey	ALL	Check the iN VIN status for eligibility.
2020–22	Passport	ALL	Check the iN VIN status for eligibility.
2020–21	Pilot	ALL	Check the iN VIN status for eligibility.
2020–21	Ridgeline	ALL	Check the iN VIN status for eligibility.

### REVISION SUMMARY

Under REPAIR PROCEDURE, step 4 and 6 was updated.

### BACKGROUND

Due to improper manufacturing, the glass may not adhere properly to the back plate of the door mirror assembly and detach. This could impair rearward visibility, increasing the risk of crash or injury and resulting in noncompliance with FMVSS 111.

### CUSTOMER NOTIFICATION

Owners of affected vehicles will be sent a notification of this campaign.

Do an iN VIN status inquiry to make sure the vehicle is shown as eligible.

Some vehicles affected by this campaign may be in your new or used vehicle inventory.

Failure to repair a vehicle subject to a recall or campaign may subject your dealership to claims or lawsuits from the customer or anyone else harmed as a result of such failure. Before selling a vehicle in inventory, always check if it is affected by a safety recall by conducting a VIN status inquiry.

### CORRECTIVE ACTION

Replace both the left and right side door mirrors.

**CUSTOMER INFORMATION:**The information in this bulletin is intended for use only by skilled technicians who have the proper tools, equipment, and training to correctly and safely maintain your vehicle. These procedures should not be attempted by “do-it-yourselfers,” and you should not assume this bulletin applies to your vehicle, or that your vehicle has the condition described. To determine whether this information applies, contact an authorized Honda automobile dealer.

## PARTS INFORMATION

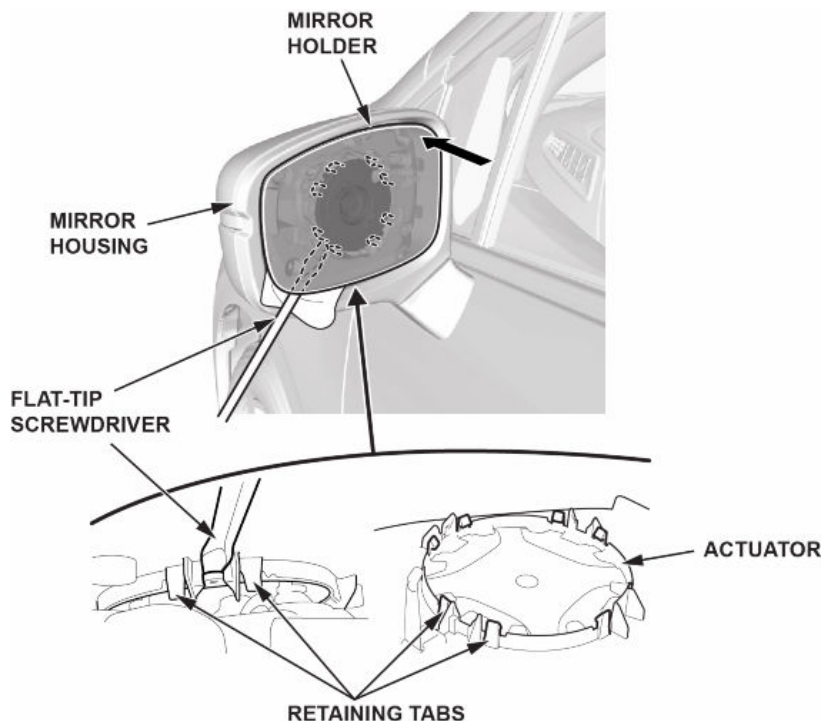
Part Name	Part Number	Quantity
Left Mirror Set (Odyssey)	76253-THR-A12	1
Right Mirror Set (Odyssey)	76203-THR-A11	1
Left Mirror Set (Passport, Pilot, Ridgeline)	76254-T6Z-A21	1
Right Mirror Set (Passport, Pilot, Ridgeline)	76204-TG7-A11	1

## WARRANTY CLAIM INFORMATION

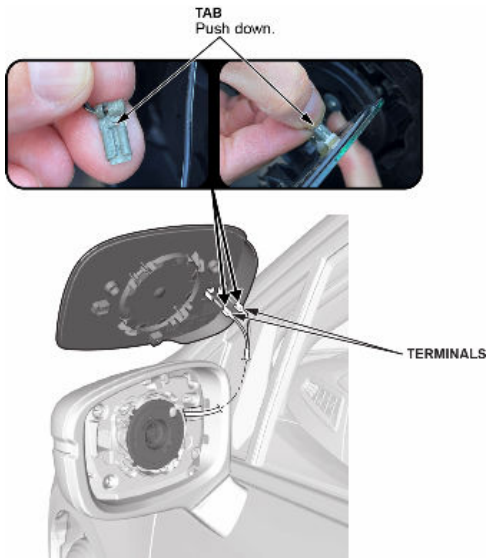
Operation Number	Description	Flat Rate Time	Defect Code	Symptom Code	Template ID	Failed Part Number
8201Y5	Odyssey: Replace both left and right side door mirrors (includes function check).	0.3 hr	6MU00	FE500	A23035A	76253-THR-A12
8201Y5	Pilot, Passport, Ridgeline: Replace both left and right side door mirrors (includes function check).	0.3 hr	6MU00	FE500	A23035B	76204-TG7-A11

## REPAIR PROCEDURE

- Carefully push on the top-right corner of the mirror holder to create an opening on the lower-left-hand corner between the mirror holder and the mirror housing.



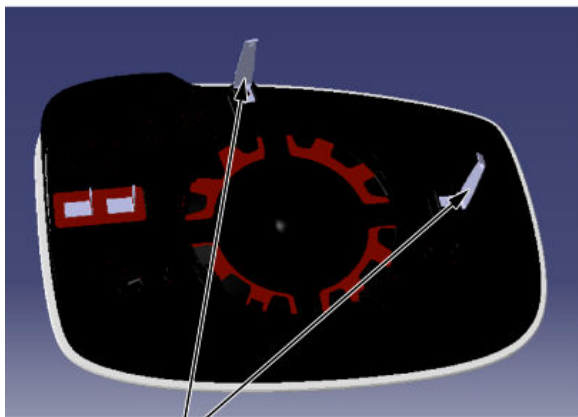
2. Insert a flat-tip screwdriver next to the retaining tab as shown, and twist the screwdriver to release the retaining tab. Release the other retaining tabs and remove the mirror holder.
3. With mirror defogger: Carefully disconnect the terminals.



Installing the mirror

4. For Odyssey driver side mirror only, make sure to install the two long tabs (placed on the mirror backing for packaging purposes) onto the new mirror.

**ODYSSEY ONLY**



**TABS**  
Included in the kit.



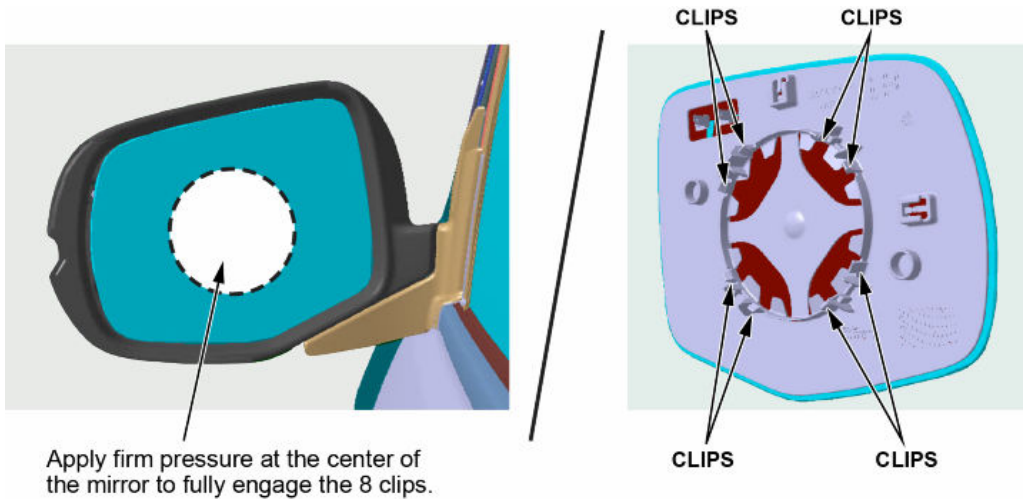
**LONG TABS**

5. Connect the heater wire terminals.

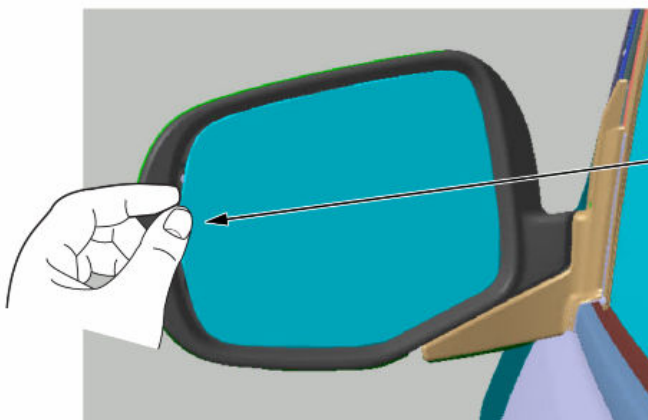
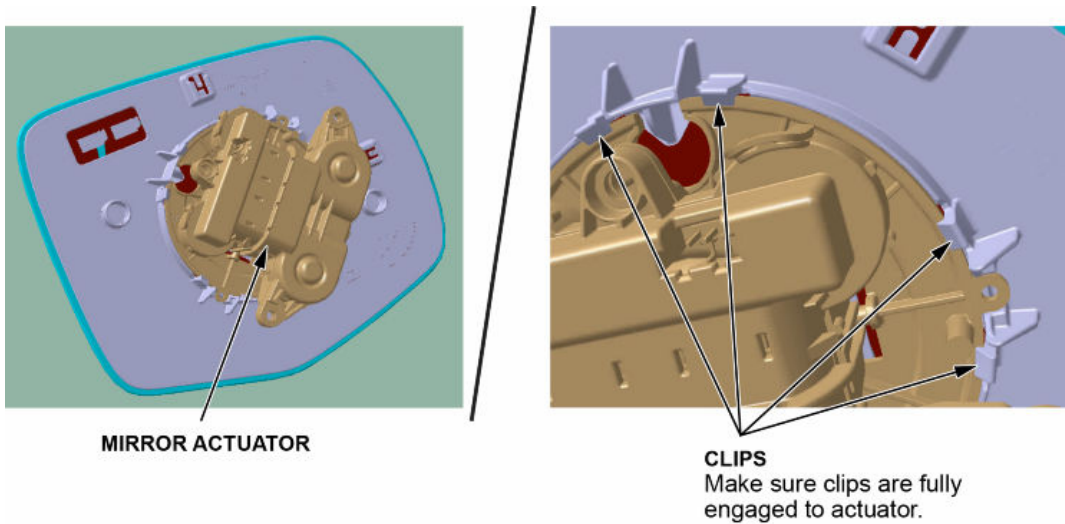
6. Install the mirror glass onto the actuator by pressing evenly at the center of the mirror to engage the retaining tabs.

Installation tips:

- Using the palm of your hand, apply firm pressure to the center of the mirror.



- While applying pressure to the mirror, you should feel the (8) clips engaging into the actuator base.



After installation is complete, use your fingers to push/lift around the edge of the mirror to make sure it is tightly installed. If you feel any looseness, you might need to remove and reinstall the mirror.

- Run your finger, pushing in and out, along the full outer edge of the mirror to ensure proper installation. If you feel any looseness at any point, remove and reinstall the mirror.

- After installation, check the mirror image for any distortion/waviness. If you find an area that is distorted/wavy, make sure all the clips are set.

7. Repeat steps 1 through 6 on the opposite side.

8. Check the mirror functions.

END