

July 26, 2024

Version 3

## Safety Recall: 2020–22 Multi-Model Door Mirror Glass

Supersedes 23-035, dated May 16, 2023, to revise the information.

### AFFECTED VEHICLES

Year	Model	Trim	VIN Range
2020–22	Odyssey	ALL	Check the iN VIN status for eligibility.
2020–22	Passport	ALL	Check the iN VIN status for eligibility.
2020–21	Pilot	ALL	Check the iN VIN status for eligibility.
2020–21	Ridgeline	ALL	Check the iN VIN status for eligibility.

### REVISION SUMMARY

This bulletin has been extensively revised. American Honda recommends reviewing this bulletin in its entirety.

### BACKGROUND

Due to improper manufacturing, the glass may not adhere properly to the back plate of the door mirror assembly and detach. This could impair rearward visibility, increasing the risk of crash or injury and resulting in noncompliance with FMVSS 111.

### CUSTOMER NOTIFICATION

Owners of affected vehicles will be sent a notification of this campaign. Do an iN VIN status inquiry to make sure the vehicle is shown as eligible.

Some vehicles affected by this campaign may be in your new or used vehicle inventory.

Failure to repair a vehicle subject to a recall or campaign may subject your dealership to claims or lawsuits from the customer or anyone else harmed as a result of such failure. Before selling a vehicle in inventory, always check if it is affected by a safety recall by conducting a VIN status inquiry.

### CORRECTIVE ACTION

Replace both the left and right side door mirrors.

**CUSTOMER INFORMATION:**The information in this bulletin is intended for use only by skilled technicians who have the proper tools, equipment, and training to correctly and safely maintain your vehicle. These procedures should not be attempted by “do-it-yourselfers,” and you should not assume this bulletin applies to your vehicle, or that your vehicle has the condition described. To determine whether this information applies, contact an authorized Honda automobile dealer.

## PARTS INFORMATION

Part Name	Part Number	Quantity
Left Mirror Set (Odyssey)	76253-THR-A12	1
Right Mirror Set (Odyssey)	76203-THR-A11	1
Left Mirror Set (Passport, Pilot, Ridgeline)	76254-T6Z-A21	1
Right Mirror Set (Passport, Pilot, Ridgeline)	76204-TG7-A11	1

## WARRANTY CLAIM INFORMATION

Operation Number	Description	Flat Rate Time	Defect Code	Symptom Code	Template ID	Failed Part Number
8201Y5	Odyssey: Replace both left and right side door mirrors (includes function check)	0.3 hr	6MU00	FE500	A23035A	76253-THR-A12
8201Y5	Pilot, Passport, Ridgeline: Replace both left and right side door mirrors (includes function check)	0.3 hr	6MU00	FE500	A23035B	76204-TG7-A11

## REPAIR PROCEDURE

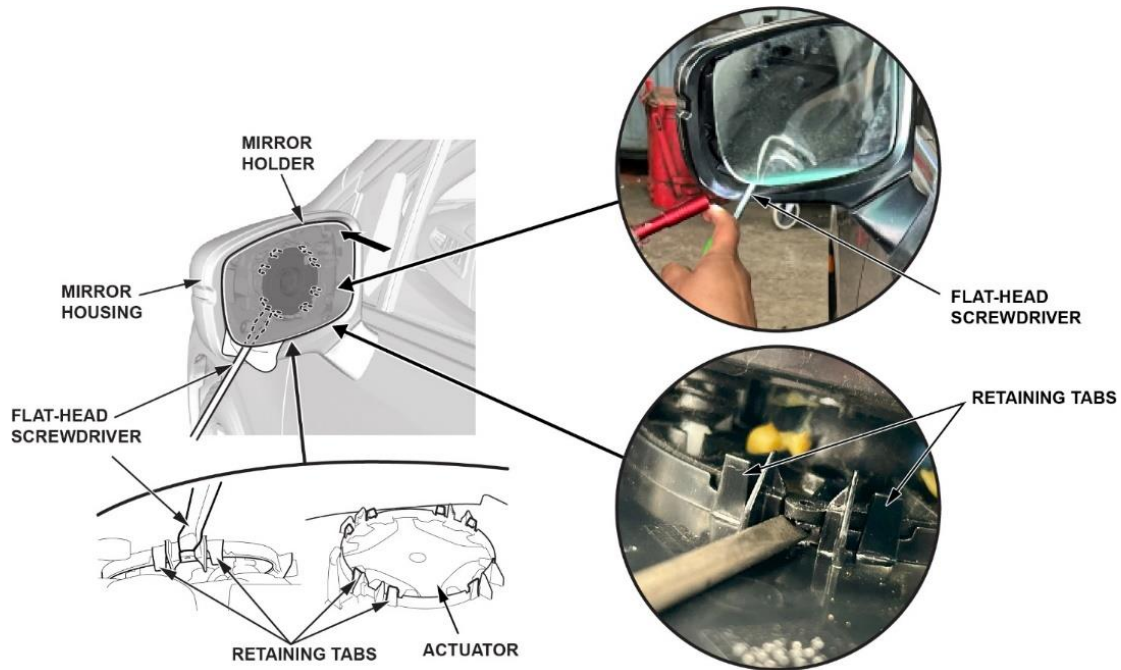
### Removing the mirror

1. Carefully push on either the top or bottom of the mirror to create an opening at the outer corner between the mirror backing plate and the mirror housing.

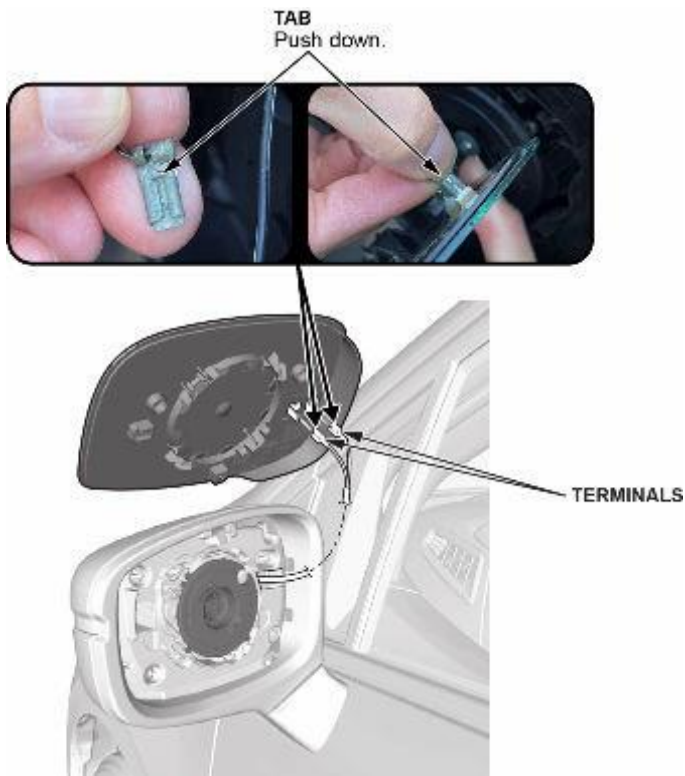


Push on the mirror to create an opening.

2. Insert a flat-tip screwdriver next to the retaining tab as shown, and twist the screwdriver to release the retaining tab. Release the other retaining tabs and remove the mirror holder.



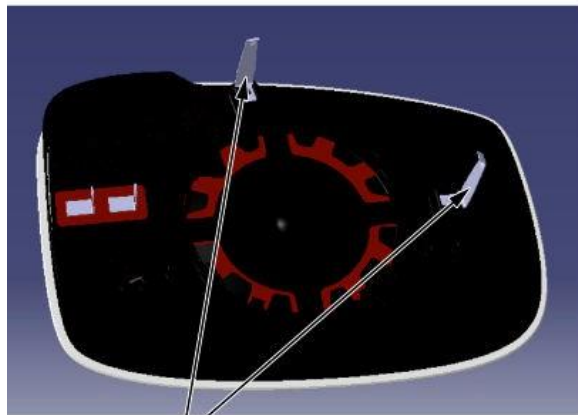
3. With mirror defogger: Carefully disconnect the terminals.



## Installing the mirror

4. Odyssey **driver-side mirror ONLY**, all others skip to step 2: Make sure to install the two long tabs (placed on the mirror backing for packaging purposes) onto the new mirror.

### ODYSSEY ONLY



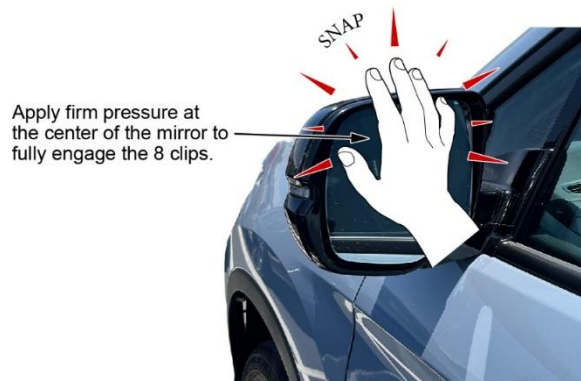
**TABS**  
Included in the kit.



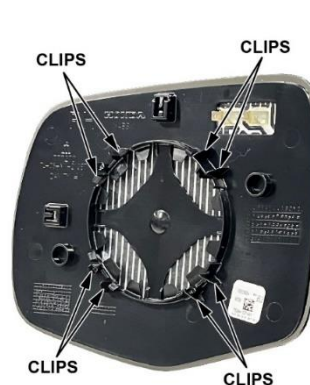
**LONG TABS**

5. Connect the heater wire terminals (if equipped with heated mirrors).
6. Install the mirror glass onto the actuator by pressing evenly at the center of the mirror with the palm of the hand to engage the retaining tabs.

NOTE: While applying pressure to the mirror, you should feel the (8) clips engaging into the actuator base.



Apply firm pressure at the center of the mirror to fully engage the 8 clips.



**CLIPS** **CLIPS**  
**CLIPS** **CLIPS**

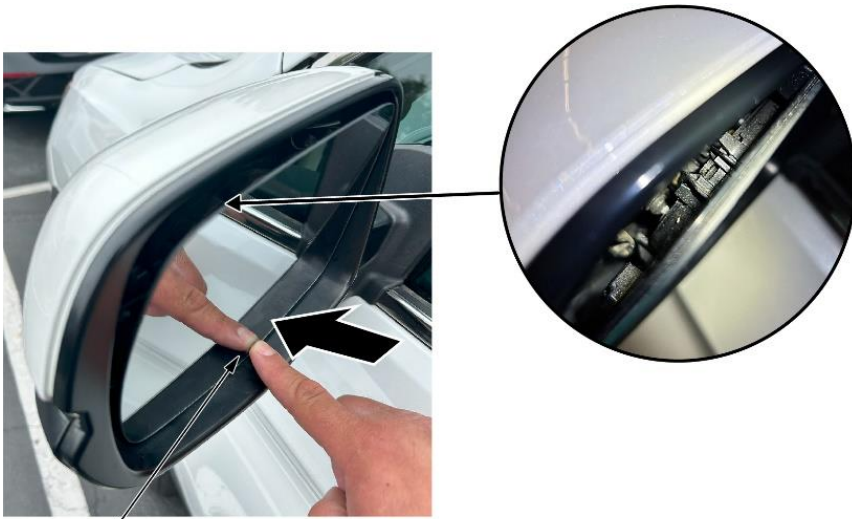
7. Check the mirror image for any distortion or waviness.

NOTE: If any distortion or waviness is found, make sure all of the clips are set and, if necessary, remove then reinstall the mirror.

8. Use a finger to push in and out along the full outer edge of the mirror to feel for any looseness and ensure proper installation.

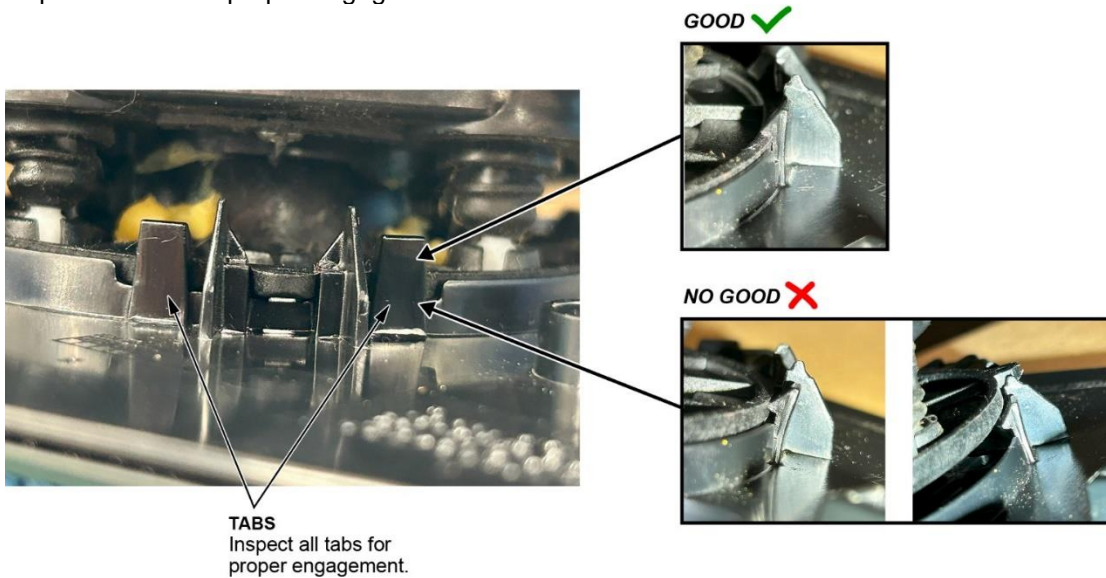
NOTE: If any looseness is felt, remove then reinstall the mirror.

9. Carefully push on the top or bottom of the mirror to create an opening at the outer corner between the mirror backing plate and the mirror housing.



Push on the mirror to create an opening.

10. Inspect all tabs for proper engagement.



**TABS**  
Inspect all tabs for proper engagement.

11. Check that the mirror functions properly.  
12. Repeat all steps to the opposite side mirror.