



Recall Bulletin 230224REV

RECALL BULLETIN: 230224REV	The purpose of this Recall Service Bulletin is to inform REV Recreation Group dealers of the need to inspect, and if necessary, replace the inside latch used on Lippert 920 and 3500 series entry doors on certain model year 2023 Fleetwood brand Bounder, Discovery, Discovery LXE, Flair, Flex, Fortis, Frontier, Frontier GTX, Pace Arrow and Southwind. Holiday Rambler brand, Admiral, Armada, Eclipse, Endeavor, Invicta, Nautica, Navigator and Vacationer. American Coach brand American Tradition. A list of affected motorhome serial numbers appears at the end of this Bulletin.
YEAR(S) AFFECTED: 2023	
PRODUCT(S) AFFECTED: <u>Fleetwood</u> Bounder Southwind Discovery Discovery LXE Flair Flex Fortis Frontier Frontier GTX Pace Arrow <u>Holiday Rambler</u> Admiral Armada Eclipse Endeavor Invicta Nautica Navigator Vacationer <u>American Coach</u> American Tradition	<p>CONDITION: On some motorhomes affected by this recall campaign, a defect has been found at the attachment point within the entry door latch supplied to Lippert. A specific attachment point was inadvertently weakened when the vendor implemented an improvement to create a more secure attachment groove for the retaining ring in the handle design of the latch. A defective entry door latch would not allow entry or exit via the door.</p> <p>DEALER CORRECTIVE ACTION: Follow the attached Lippert repair bulletin to inspect and if defective, replace the inside door latch assembly.</p> <p style="text-align: center;">*Photos will only be required of the door tag at the time of authorization or risk the claim being denied*</p> <p>ATTENTION SERVICE, WARRANTY AND PARTS MANAGERS: ALL APPROVALS, PARTS ORDERS and CLAIM PAYMENTS, must go through REV RV DEALER TECHNICAL SUPPORT AT (800) 816-9825 and REV PARTS AT (800) 509-3417. ANY QUESTIONS PERTAINING THE INSPECTION AND/OR REPIAR NEED TO BE DIRECTED TO LIPPERT AT (574) 538-4515, OR BY EMAIL AT recall@lci1.com.</p>
MONTHS OF MANUFACTURE: Oct. 2022 – Mar 2023	
KEYWORDS: Entry Door, Latch	<p style="text-align: center;">WARRANTY LABOR ALLOWANCE:</p> <p>Recall 230224REV Entry Door Latch (Prior Authorization Is Required) Use Flat Rate Codes: (Photos of the door tag are required) 6311 11 Inspected/Not Defective 0.3 HR 6311 12 Inspected/Defective/Repaired 0.7 HR</p>
MODEL(S) AFFECTED: All	
SUBJECT: Entry door latch may malfunction.	<p>RECALL REPLACEMENT PARTS: Qty 1: 10883283 Inside Latch Assembly for 920 Series Door Qty 1: 10883282 Inside Latch Assembly for 3500 Series Door Qty 1: 10858077 Complete Door Latch Assembly</p>
ISSUED: May 2023	<p style="text-align: center;">*DO NOT USE PARTS IN STOCK WITHOUT VALIDATION</p>
2023 rev recreation Group, Inc.	<p style="text-align: center;">(PARTS MUST BE ORDERED FROM REV PARTS (800) 509-3417)</p>



GLOBAL ENTRY DOOR LATCH INSPECTION/ REPLACEMENT INSTRUCTIONS *MOTORIZED UNITS ONLY

Recall Number:	23E-008
Product:	Global Latch
Date:	Original: 02.23.2023 Revision: 04.13.2023

Labor Rate:	<i>Inspection Only - 0.3 Hour</i>
	Inspect & Replace - 0.7 Hour

NOTE: This document supersedes the previously-released version dated 02.23.2023. The new section includes preliminary procedures for the inside latch assembly part replacement.

Prior Authorization Not Required; Door Tag Photo Necessary

1. Lippert does not require any advance contact or prior authorization be obtained prior to performing the inspection or replacement.
2. A photo of the door tag as shown on Page 2 must accompany any requests for reimbursement of work completed sent to the RV manufacturer or direct to Lippert.

Preliminary procedures for inside latch assembly part replacement

NOTE: When possible, all repairs should utilize the replacement of the inside latch assembly rather than the complete latch assembly. This preferred procedure is outlined first.

Inside Latch Assembly Part To Be Replaced

This section of document refers to the replacement of the inside latch assembly of the complete door lock assembly with latch on certain motorized entry doors. A portion of the latch is breaking off when attempting to exit the coach. The instructions are applicable to using a replacement inside latch assembly PN 2023005033 for the 920 Series door and inside latch assembly PN 2022010407 for the 3500 Series door.

NOTE: Check first for an "INSPECTED LATCH" sticker on the inside of the door frame between the hinges (Fig. 12). If it is present, report back to the OEM that the VIN has already been addressed.

Safety

This document provides general instructions. Many variables can change the circumstances of any procedure, i.e. the degree of difficulty involved in the service operation and the ability level of the individual performing the operation. This document cannot begin to plot out procedures for every possibility, but will provide the general instructions for effectively installing, removing or servicing the system. In the event the skill level required is too advanced or the procedure too difficult, a certified technician should be consulted before performing the necessary operation. Failure to correctly install, remove or service the system may result in voiding the warranty, inflicting injury or even death.

Resources Required

- Two people
- Cordless or electric drill or screwgun
- Appropriate drive bit
- 7/16" nut driver
- 1/4" screwgun bit
- Replacement inside latch assembly for the 920 Series door, PN 2023005033
- Replacement inside latch assembly for the 3500 Series door, PN 2022010407

GLOBAL ENTRY DOOR LATCH INSPECTION/ REPLACEMENT INSTRUCTIONS *MOTORIZED UNITS ONLY

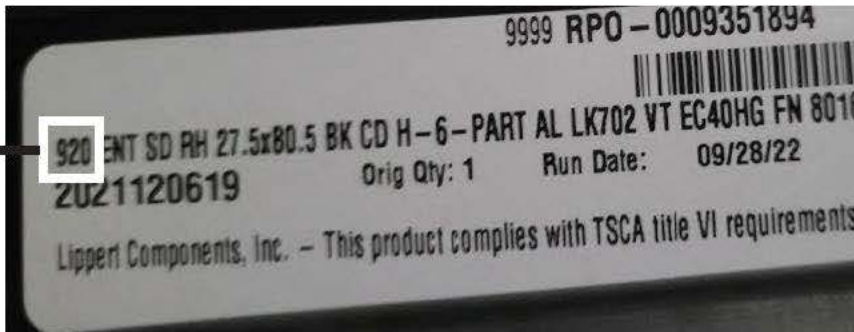
Recall Number:	23E-008
Product:	Global Latch
Date:	Original: 02.23.2023 Revision: 04.13.2023

Labor Rate:	Inspected Only – 0.3 Hour
	Inspect & Replace - 0.7 Hour

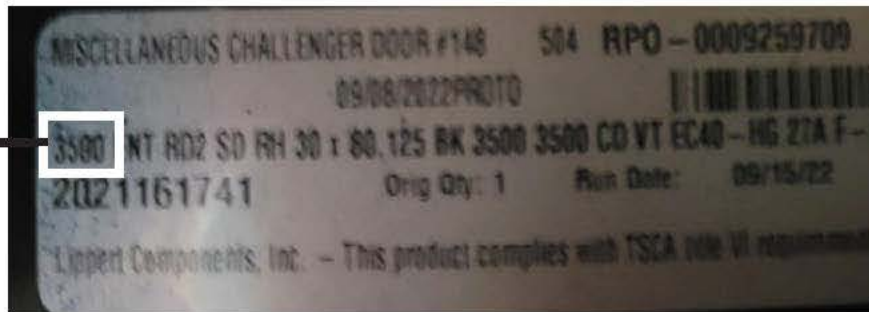
Determine Correct Latch Assembly Part

The replacement latch assembly part is determined by the serial number on the door tag. Replacement inside latch assembly for the 920 Series door is PN 2023005033. Replacement inside latch assembly for the 3500 Series door is PN 2022010407.

920 Series



3500 Series



Components of Complete Door Lock Assembly

The complete door lock assembly with latch on certain entry doors on motorized units is comprised of both an inside latch assembly and outside latch assembly.

Continue to the Procedures section for instructions on replacing the inside latch assembly.



Inside Latch Assembly



Outside Latch Assembly

GLOBAL ENTRY DOOR LATCH INSPECTION/ REPLACEMENT INSTRUCTIONS *MOTORIZED UNITS ONLY

Recall Number:	23E-008
Product:	Global Latch
Date:	Original: 02.23.2023 Revision: 04.13.2023

Labor Rate:	<i>Inspection Only - 0.3 Hour</i>
	Inspect & Replace - 0.7 Hour

Preliminary procedures for complete door lock assembly replacement

NOTE: This option is to be used only if replacement of the inside latch assembly is not feasible.

Complete Door Lock Assembly To Be Replaced

The section of this document refers to the replacement of the complete door lock assembly with latch on certain motorized entry doors. A portion of the latch is breaking off when attempting to exit the coach. The complete door lock assembly with latch, PN 2021097898, is to be replaced with a redesigned part.

NOTE: Check first for an "INSPECTED LATCH" sticker on the inside of the door frame between the hinges (Fig. 12). If it is present, report back to the OEM that the VIN has already been addressed.

Safety

This document provides general instructions. Many variables can change the circumstances of any procedure, i.e. the degree of difficulty involved in the service operation and the ability level of the individual performing the operation. This document cannot begin to plot out procedures for every possibility, but will provide the general instructions for effectively installing, removing or servicing the system. In the event the skill level required is too advanced or the procedure too difficult, a certified technician should be consulted before performing the necessary operation. Failure to correctly install, remove or service the system may result in voiding the warranty, inflicting injury or even death.

Resources Required

- Two people
- Cordless or electric drill or screwgun
- Appropriate drive bit
- 7/16" nut driver
- 1/4" screwgun bit
- Replacement complete latch assembly, PN 2021097898

The complete door lock assembly with latch on certain entry doors on motorized units is comprised of both an inside latch assembly and outside latch assembly. Continue to Procedures section for instructions on replacement.



Inside Latch Assembly



Outside Latch Assembly

GLOBAL ENTRY DOOR LATCH INSPECTION/ REPLACEMENT INSTRUCTIONS *MOTORIZED UNITS ONLY

Recall Number:	23E-008
Product:	Global Latch
Date:	Original: 02.23.2023 Revision: 04.13.2023

Labor Rate:	<i>Inspection Only - 0.3 Hour</i>
	Inspect & Replace - 0.7 Hour

Procedures

Disassemble Latch

1. Open entry door so it is perpendicular to the coach.
2. Peel off adhesive patch covering the access port for the latch fastening nut (Fig. 1).
3. Use 7/16" nut driver to remove threaded nut (Figs. 2 and 3) and set aside.

NOTE: Be careful not to let the nut fall out of the nut driver and down into the door while removing.

Fig. 1



Fig. 2

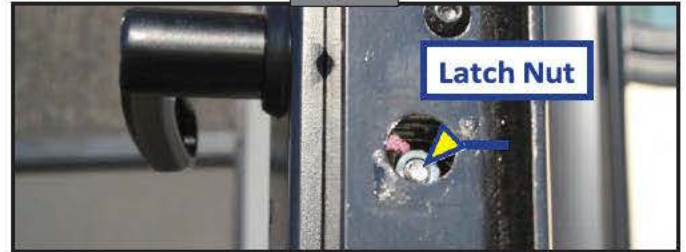


Fig. 3



4. While another person supports the outside latch assembly, remove the three Phillips head screws on the inside of the assembly (Fig. 4) and set aside.
5. Remove both sides of latch assembly.

Fig. 4



GLOBAL ENTRY DOOR LATCH INSPECTION/ REPLACEMENT INSTRUCTIONS *MOTORIZED UNITS ONLY

Recall Number:	23E-008
Product:	Global Latch
Date:	Original: 02.23.2023 Revision: 04.13.2023

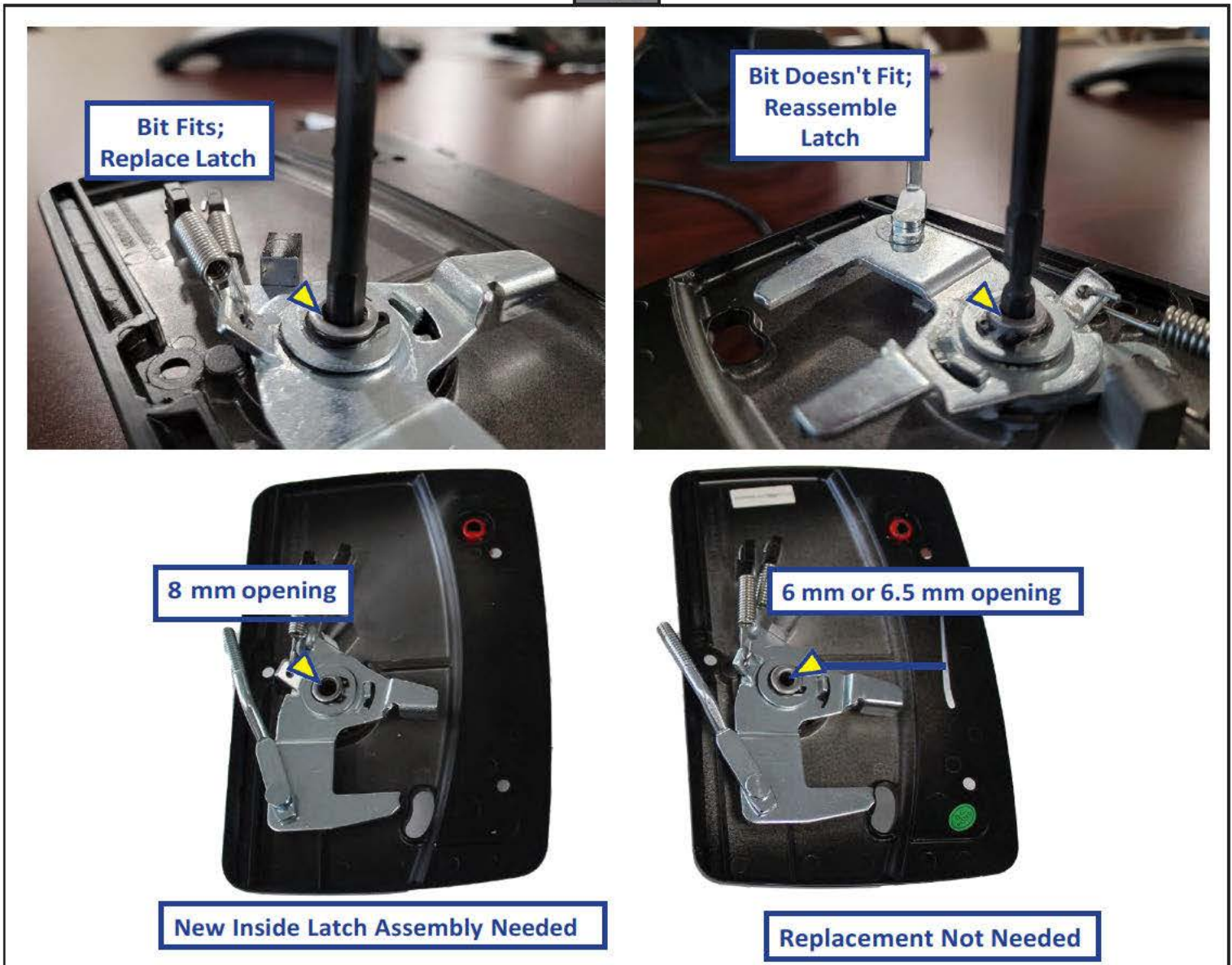
Labor Rate:	Inspection Only - 0.3 Hour
	Inspect & Replace - 0.7 Hour

Inspection

NOTE: Check first for an "INSPECTED LATCH" sticker on the inside of the door frame between the hinges (Fig. 12). If it is present, report back to the OEM that the VIN has already been addressed. If not inspected, proceed with inspection.

- Using a 1/4" screwgun bit, try to insert the bit into the spun rivet of the inside latch assembly (Fig. 5).
- If bit fits into rivet opening there are two options:
 - Replace the complete latch assembly, including both inside and outside latch assemblies.
 - Replace just the inside latch assembly to be combined with current outside latch assembly.
- If the bit does not fit, no action is required. Proceed to latch reassembly instructions.

Fig. 5



GLOBAL ENTRY DOOR LATCH INSPECTION/ REPLACEMENT INSTRUCTIONS *MOTORIZED UNITS ONLY

Recall Number:	23E-008
Product:	Global Latch
Date:	Original: 02.23.2023 Revision: 04.13.2023

Labor Rate:	Inspection Only - 0.3 Hour
	Inspect & Replace - 0.7 Hour

Reassemble Latch Assembly: Including Both Full, Partial Replacement

- Slide inside latch assembly into place. Keep deadbolt handle in the 10 o'clock position (Fig. 6).

NOTE: Do NOT let deadbolt pop out of place. It may be difficult to reinstall.

- While another person holds the inside latch assembly in place, reinstall the latch nut and tighten slowly with nut driver until a few threads of the bolt are visible (Fig. 7).

NOTE: Do NOT tighten nut completely. The latch will not operate correctly if the nut is too tight.

Fig. 6



Fig. 7



- While another person holds the outside assembly, loosely reinstall the three Phillips head screws (Fig. 8).
- Align deadbolt and then extend the deadbolt so it appears on the outside of the door frame (Fig. 9).
- When deadbolt is extended, firmly tighten the three Phillips head screws (Fig. 10).

Fig. 8



Fig. 9



Fig. 10

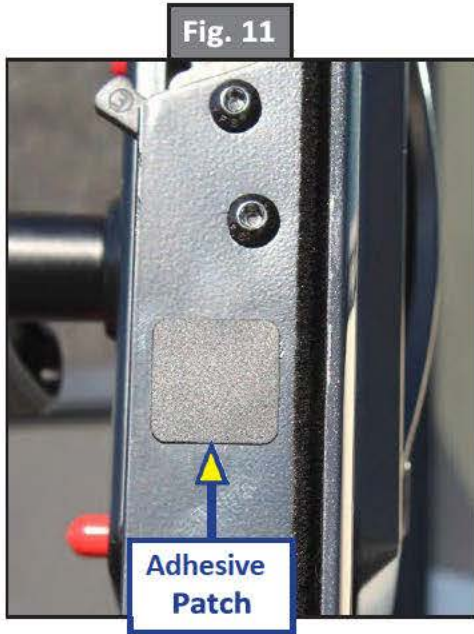


GLOBAL ENTRY DOOR LATCH INSPECTION/ REPLACEMENT INSTRUCTIONS *MOTORIZED UNITS ONLY

Recall Number:	23E-008
Product:	Global Latch
Date:	Original: 02.23.2023 Revision: 04.13.2023

Labor Rate:	<i>Inspection Only - 0.3 Hour</i>
	Inspect & Replace - 0.7 Hour

6. Replace adhesive patch over nut access port (Fig. 11).
7. Place an "INSPECTED LATCH" sticker indicating the assembly has been replaced on the inside of the door frame between the hinges (Fig. 12).



As a supplier of a broad array of highly-engineered components in the recreation and transportation product markets, safety, education and customer satisfaction are our primary concerns. Should you have any questions, please do not hesitate to contact us at 432-LIPPERT (432-547-7378) or by email at customerservice@lci1.com.

Self-help tips, technical documents, product videos and a training class schedule are available at lippert.com or by downloading the LippertNOW app.

PARTS

Order parts from REV RV Parts Dept (800) 509-3417

<u>Part Number</u>	<u>Description</u>	<u>Qty</u>
10883283	Inside Latch Assembly for 920 Series Door	1
10883282	Inside Latch Assembly for 3500 Series Door	1
10858077	Complete Door Latch Assembly	1

***DO NOT USE IN STOCK PARTS WITHOUT VALIDATION**

TOOLS

Drill or screw gun

1/16 Drive bit

1/4 Screw gun bit

7/16 Nut driver

WARRANTY LABOR ALLOWANCE

Recall 230224REV Entry Door Latch

Flat Rate Codes:

6311 11 - Inspected/Not Defective 0.3 HR

6311 12 – Inspected/Defective/Repaired 0.7 HR



PHOTOS OF THE DOOR TAG ONLY, ARE REQUIRED FOR AUTHORIZATION

ALL APPROVALS, and CLAIM PAYMENTS must go through REV RV Technical Support at (800) 816-9825. Parts must be ordered through REV RV Parts at (800) 509-3417.

ANY QUESTIONS PERTAINING THE INSPECTION AND/OR REPAIR NEED TO BE DIRECTED TO LIPPERT AT (574) 538-4514, OR BY EMAIL AT recall@lci1.com.

Recall 230224REV Affected Unit Serial Numbers

Model Year 2023 Fleetwood Bounder

REV Unit Identification #	Chassis VIN #
739GP4439569	1F66F5DN9N0
739GP4439402	1F66F5DN0N0
739KP4439344	1F66F5DN8N0
739GP4439513	1F66F5DN1N0
739CP4439568	1F66F5DN5N0
739KP4439658	1F66F5DN8N0
739FP4439693	1F66F5DN4N0
739CP4439940	1F66F5DN3N0
739GP4439360	1F66F5DN4N0
739CP4439401	1F66F5DN7N0
739CP4439504	1F66F5DN3N0
739KP4439949	1F66F5DN6N0
739KP4439506	1F66F5DN2N0
739GP4439714	1F66F5DN7N0
739GP4439706	1F66F5DN7N0
739CP4439429	1F66F5DN6N0
739KP4439579	1F66F5DN9N0
739KP4439338	1F66F5DN7N0
739KP4439841	1F66F5DN7N0
739KP4439871	1F66F5DNXN0
739KP4439358	1F66F5DN7N0
739GP4439440	1F66F5DN2N0
739KP4439776	1F66F5DN9N0
739GP4439619	1F66F5DN7N0
739GP4439398	1F66F5DN2N0
739KP4439537	1F66F5DN6N0
739KP4439435	1F66F5DN1N0
739CP4439653	1F66F5DN6N0
739KP4439571	1F66F5DN8N0
739FP4439604	1F66F5DN9N0
739GP4439387	1F66F5DN0N0
739KP4439336	1F66F5DN9N0
739GP4439744	1F66F5DNXN0
739CP4439617	1F66F5DN8N0
739KP4439544	1F66F5DN5N0

REV Unit Identification #	Chassis VIN #
739KP4439663	1F66F5DN9N0
739KP4439465	1F66F5DN0N0
739CP4439459	1F66F5DNXN
739KP4439346	1F66F5DN9N0
739KP4439578	1F66F5DN9N0
739CP4439422	1F66F5DN8N0
739GP4439839	1F66F5DN3N0
739CP4439347	1F66F5DN5N0
739KP4439665	1F66F5DN7N0
739KP4439710	1F66F5DN5N0
739CP4439433	1F66F5DN5N0
739KP4439542	1F66F5DN4N0
739CP4439349	1F66F5DN6N0
739CP4439348	1F66F5DN8N0
739CP4439350	1F66F5DN4N0
739CP4439362	1F66F5DN3N0
739KP4439340	1F66F5DN4N0
739KP4439342	1F66F5DN7N0
739KP4439425	1F66F5DN7N0
739KP4439439	1F66F5DN9N0
739KP4439437	1F66F5DN0N0
739GP4439427	1F66F5DN2N0
739GP4439502	1F66F5DN1N0
739KP4439509	1F66F5DN2N0
739CP4439500	1F66F5DN1N0
739KP4439536	1F66F5DN0N0
739KP4439540	1F66F5DN5N0
739GP4439473	1F66F5DN3N0
739CP4439546	1F66F5DN4N0
739GP4439548	1F66F5DN9N0
739CP4439552	1F66F5DN5N0
739GP4439463	1F66F5DN5N0
739KP4439570	1F66F5DN3N0
739KP4439611	1F66F5DN6N0
739CP4439613	1F66F5DN7N0

(2023 Fleetwood Bounder serial numbers continued on next page)

Recall 230224REV Affected Unit Serial Numbers

Model Year 2023 Fleetwood Bounder (continued)

REV Unit Identification #	Chassis VIN #
739GP4439489	1F66F5DN0N0
739GP4439580	1F66F5DN1N0
739KP4439581	1F66F5DNXN0
739CP4439551	1F66F5DN7N0
739KP4439662	1F66F5DN9N0
739CP4439646	1F66F5DN5N0
739CP4439649	1F66F5DN5N0
739KP4439695	1F66F5DN8N0
739CP4439690	1F66F5DNXN0
739KP4439301	1F66F5DN5N0
739CP4439731	1F66F5DN2N0
739FP4439737	1F66F5DN9N0
739CP4439802	1F66F5DN0N0
739KP4439777	1F66F5DN0N0
739KP4439779	1F66F5DN2N0
739KP4439778	1F66F5DN3N0
739FP4439748	1F66F5DN8N0
739CP4439798	1F66F5DN2N0
739GP4439780	1F66F5DN5N0
739KP4439835	1F66F5DN4N0
739KP4439837	1F66F5DN6N0
739KP4439811	1F66F5DN2N0
739CP4439868	1F66F5DN8N0
739GP4439870	1F66F5DN2N0
739GP4439800	1F66F5DN6N0
739KP4439809	1F66F5DN9N0
739FP4439943	1F66F5DN6N0
739KP4439956	1F66F5DN8N0
739KP4439952	1F66F5DN8N0
739GP4439919	1F66F5DN6N0
739KP4439697	1F66F5DN2N0

Model Year 2023 Fleetwood Southwind

REV Unit Identification #	Chassis VIN #
721KP4439364	1F66F5DN0N0
721KP4439606	1F66F5DN5N0
721KP4439550	1F66F5DN4N0
721KP4439519	1F66F5DN3N0
721CP4439655	1F66F5DN8N0
721GP4439585	1F66F5DN3N0
721KP4439922	1F66F5DN2N0

Model Year 2023 Fleetwood Discovery

REV Unit Identification #	Chassis VIN #
734WP4439481	4UZACGFC1PC
734NP4439630	4UZACGFC1PC
734WP4439377	4UZACGFC5PC
734WP4439557	4UZACGFC3PC
734WP4439756	4UZACGFC5PC
734WP4439495	4UZACGFC3PC
734QP4439628	4UZACGFC0PC
734WP4439409	4UZACGFC4PC
734NP4439353	4UZACGFC9PC
734WP4439379	4UZACGFC7PC
734WP4439453	4UZACGFC5PC
734WP4439374	4UZACGFC3PC
734WP4439527	4UZACGFC4PC
734KP4439560	4UZACGFC2PC
734WP4439672	4UZACGFC3PC
734WP4439590	4UZACGFCXPC
734KP4439721	4UZACGFC7PC
734QP4439789	4UZACGFC5PC
734WP4439787	4UZACGFC6PC
734WP4439858	4UZACGFC0PC
734WP4439923	4UZACGFC9PC
734WP4439967	4UZACGFC5PC

Recall 230224REV Affected Unit Serial Numbers

Model Year 2023 Fleetwood Discovery LXE

REV Unit Identification #	Chassis VIN #
724BP4439594	4UZFCGFE7PC
724SP4439441	4UZFCGFE2PC
724MP4439407	4UZACGFE8PC
724SP4439450	4UZFCGFE0PC
724MP4439927	4UZACGFE5PC
724BP4439523	4UZFCGFE8PC
724MP4439667	4UZACGFE8PC
724SP4439674	4UZFCGFE9PC
724BP4439929	4UZACGFE4PC
724MP4439758	4UZACGFE8PC
724SP4439564	4UZFCGFE3PC
724BP4439785	4UZFCGFE3PC
724SP4439668	4UZFCGFE1PC
724MP4439477	4UZACGFE8PC
724BP4439700	4UZFCGFE7PC
724BP4439592	4UZFCGFE5PC
724MP4439474	4UZACGFE1NC
724MP4439595	4UZACGFE6PC
724BP4439375	4UZFCGFE7PC
724SP4439444	4UZFCGFE3PC
724BP4439411	4UZFCGFE5PC
724MP4439493	4UZACGFE2PC
724MP4439447	4UZACGFE5PC
724BP4439483	4UZFCGFE4PC
724GP4439448	4UZACGFE9PC
724MP4439553	4UZACGFE8PC
724SP4439555	4UZFCGFE2PC
724HP4439632	4UZACGFE6PC
724GP4439669	4UZACGFEXPC
724HP4439752	4UZACGFE6PC
724BP4439726	4UZFCGFE2PC
724BP4439760	4UZFCGFE9PC
724GP4439724	4UZACGFE2PC
724BP4439792	4UZFCGFE6PC
724HP4439899	4UZACGFE0PC

Model Year 2023 Fleetwood Discovery LXE Continued

REV Unit Identification #	Chassis/VIN #
724MP4439957	4UZACGFE7PC
724GP4439959	4UZACGFE6PC

Model Year 2023 Fleetwood Flair

REV Unit Identification #	Chassis VIN #
755AP4439576	1F64F5DN0N0
755AP4439749	1F64F5DN7N0
755MP4439879	1F65F5DNXN0
755MP4439501	1F65F5DN0N0
755MP4439464	1F65F5DN5N0
755MP4439490	1F65F5DN1N0
755NP4439460	1F66F5DN8N0
755MP4439869	1F65F5DN8N0
755MP4439621	1F65F5DN6N0
755AP4439772	1F64F5DNXN0
755BP4439842	1F66F5DN2N0
755MP4439361	1F65F5DNXN0
755MP4439388	1F65F5DN3N0
755AP4439337	1F64F5DN9N0
755AP4439359	1F64F5DN7N0
755AP4439419	1F64F5DN4N0
755NP4439514	1F66F5DN2N0
755BP4439603	1F66F5DN5N0
755BP4439610	1F66F5DN7N0
755MP4439660	1F65F5DN4N0
755AP4439652	1F64F5DN5N0
755BP4439657	1F66F5DN7N0
755MP4439733	1F65F5DN9N0
755AP4439768	1F64F5DN2N0
755BP4439810	1F66F5DN4N0
755MP4439838	1F65F5DNXN0
755NP4439904	1F66F5DN6N0

Recall 230224REV Affected Unit Serial Numbers

Model Year 2023 Fleetwood Flex

REV Unit Identification #	Chassis VIN #
758SP4439709	1F66F5DN4N0
758RP4439715	1F66F5DN6N0
758JP4439875	1F66F5DN6N0
758SP4439951	1F66F5DN7N0
758JP4439363	1F66F5DN8N0
758JP4439393	1F66F5DN0N0
758SP4439396	1F66F5DN3N0
758SP4439371	1F66F5DN4N0
758SP4439614	1F66F5DN8N0
758SP4439747	1F66F5DN9N0
758JP4439335	1F66F5DNXN0
758SP4439244	1F66F5DN1N0
758RP4439365	1F66F5DN4N0
758JP4439432	1F66F5DN5N0
758SP4439423	1F66F5DN7N0
758SP4439400	1F66F5DN1N0
758SP4439505	1F66F5DN7N0
758JP4439518	1F66F5DN1N0
758SP4439586	1F66F5DN5N0
758SP4439696	1F66F5DN6N0
758SP4439745	1F66F5DN5N0
758JP4439844	1F66F5DN2N0
758SP4439832	1F66F5DN9N0
758SP4439918	1F66F5DN7N0
758JP4439947	1F66F5DN1N0
758JP4439428	1F66F5DN2N0

Model Year 2023 Fleetwood Fortis

REV Unit Identification #	Chassis VIN #
764RP4439466	1F66F5DN5N0
764MP4439462	1F66F5DN6N0
764YP4439713	1F66F5DN9N0
764MP4439734	1F66F5DNXN0
764HP4439470	1F66F5DN2N0
764MP4439426	1F66F5DN8N0
764MP4439807	1F66F5DN3N0
764DP4439708	1F66F5DN7N0
764MP4439424	1F66F5DN8N0
764MP4439397	1F66F5DN3N0
764HP4439430	1F66F5DN7N0
764RP4439458	1F66F5DN6N0
764DP4439572	1F66F5DN0N0
764RP4439612	1F66F5DN8N0
764RP4439605	1F66F5DN7N0
764HP4439620	1F66F5DN7N0
764DP4439616	1F66F5DN5N0
764DP4439622	1F66F5DN8N0
764RP4439711	1F66F5DN5N0
764RP4439746	1F66F5DN9N0
764MP4439799	1F66F5DN8N0
764DP4439945	1F66F5DN2N0
764RP4439921	1F66F5DN6N0
764MP4439948	1F66F5DN5N0
764RP4439887	1F66F5DN4N0

Model Year 2023 Fleetwood Frontier GTX

REV Unit Identification #	Chassis VIN #
774RP4439670	4UZACHFC6PC
774RP4439318	4UZACHFCXP
774RP4439413	4UZACHFC0P
774TP4439598	4UZACHFC2P
774TP4439415	4UZACHFC1P
774TP4439677	4UZACHFC1PC
774RP4439930	4UZACHFC9P

Recall 230224REV Affected Unit Serial Numbers

Model Year 2023 Fleetwood Frontier

REV Unit Identification #	Chassis VIN #
757SP4439786	4UZAB2FC7PC
757GP4439559	4UZAB2FC5PC
757SP4439532	4UZAB2FC3PC
757SP4439635	4UZAB2FC6PC
757SP4439783	4UZAB2FC2PC
757GP4439376	4UZAB2FC6PC
757SP4439227	4UZAB2FC9PC
757SP4439381	4UZAB2FC0PC
757SP4439384	4UZAB2FC2PC
757SP4439404	4UZAB2FC5PC
757SP4439406	4UZAB2FC7PC
757GP4439491	4UZAB2FC5PC
757SP4439446	4UZAB2FC1PC
757SP4439554	4UZAB2FC0PC
757SP4439476	4UZAB2FC9PC
757GP4439478	4UZAB2FC6PC
757GP4439563	4UZAB2FC3PC
757GP4439675	4UZAB2FC2PC
757GP4439624	4UZAB2FC5PC
757GP4439625	4UZAB2FC9PC
757GP4439629	4UZAB2FC7PC
757SP4439757	4UZAB2FC0PC
757SP4439816	4UZAB2FC0PC
757SP4439631	4UZAB2FC3PC
757GP4439727	4UZAB2FCXPC
757GP4439851	4UZAB2FC5PC
757SP4439898	4UZAB2FC6PC
757GP4439924	4UZAB2FC6PC

Model Year 2023 Fleetwood Pace Arrow

REV Unit Identification #	Chassis VIN #
710UP4439671	4UZACJFC6PC
710UP4439378	4UZACJFC2PC
710DP4439352	4UZAAJFC7PC
710UP4439408	4UZACJFC5PC
710DP4439482	4UZAAJFCXPC
710DP4439449	4UZAAJFC8PC
710UP4439525	4UZACJFC2PC
710DP4439530	4UZAAJFC0PC
710UP4439561	4UZACJFC4PC
710UP4439591	4UZACJFC9PC
710BP4439633	4UZACJFC2PC
710DP4439676	4UZAAJFC7PC
710DP4439751	4UZAAJFC9PC
710DP4439556	4UZAAJFC2PC
710DP4439627	4UZAAJFC3PC
710UP4439926	4UZACJFC7PC
710UP4439960	4UZACJFC0PC

Model Year 2023 Holiday Rambler Admiral

REV Unit Identification #	Chassis VIN #
655AP4439457	1F64F5DN9N0
655MP4439773	1F65F5DN6N0
655NP4439647	1F66F5DNXN0
655AP4439834	1F64F5DN1N0
655BP4439508	1F66F5DN7N0
655MP4439420	1F65F5DN7N0
655MP4439908	1F65F5DN1N0
655NP4439389	1F66F5DNXN0
655MP4439707	1F65F5DN8N0
655AP4439512	1F64F5DN9N0
655AP4439607	1F64F5DN2N0
655MP4439341	1F65F5DN6N0
655BP4439567	1F66F5DN3N0

(2023 Holiday Rambler Admiral serial numbers continued on next page)

Recall 230224REV Affected Unit Serial Numbers

Model Year 2023 Holiday Rambler Admiral Continued

REV Unit Identification #	Chassis VIN #
655AP4439539	1F64F5DN0N0
655AP4439680	1F64F5DN8N0
655NP4439688	1F66F5DN3N0
655AP4439683	1F64F5DN6N0
655NP4439694	1F66F5DN1N0
655MP4439692	1F65F5DN4N0
655MP4439712	1F65F5DN8N0
655NP4439801	1F66F5DN0N0
655MP4439840	1F65F5DN3N0

Model Year 2023 Holiday Rambler Eclipse

REV Unit Identification #	Chassis VIN #
658JP4439343	1F66F5DN2N0
658SP4439468	1F66F5DN0N0
658JP4439391	1F66F5DN6N0
658SP4439541	1F66F5DN2N0
658RP4439471	1F66F5DN9N0
658RP4439369	1F66F5DN9N0
658RP4439357	1F66F5DN6N0
658JP4439704	1F66F5DN6N0
658JP4439345	1F66F5DN0N0
658JP4439339	1F66F5DN4N0
658SP4439434	1F66F5DNXN0
658SP4439367	1F66F5DN8N0
658JP4439436	1F66F5DN3N0
658SP4439575	1F66F5DNXN0
658SP4439584	1F66F5DN1N0
658JP4439618	1F66F5DN7N0
658JP4439648	1F66F5DN9N0
658JP4439691	1F66F5DN1N0
658SP4439732	1F66F5DN8N0
658SP4439775	1F66F5DN6N0
658SP4439805	1F66F5DN5N0
658JP4439812	1F66F5DN2N0
658JP4439872	1F66F5DN7N0
658JP4439916	1F66F5DNXN0
658RP4439941	1F66F5DN1N0

Model Year 2023 Holiday Rambler Armada

REV Unit Identification #	Chassis VIN #
638LP4439380	4UZFCGFE9PC
638LP4439626	4UZFCGFEXPC
638MP4439382	4UZACGFE0P
638LP4439496	4UZFCGFE6P
638PP4439728	4UZACGFE4PC
638MP4439405	4UZACGFEXP
638MP4439351	4UZACGFEXP
638MP4439520	4UZACGFE7P
638LP4439479	4UZFCGFE2P
638MP4439587	4UZACGFE4PC
638MP4439588	4UZACGFE0PC
638MP4439699	4UZACGFE9PC
638BP4439526	4UZFCGFE0P
638LP4439720	4UZFCGFE1PC
638LP4439925	4UZFCGFE3PC

Recall 230224REV Affected Unit Serial Numbers

Model Year 2023 Holiday Rambler Endeavor

REV Unit Identification #	Chassis VIN #
650NP4439673	4UZACGFC3PC
650NP4439475	4UZACGFC6PC
650WP4439701	4UZACGFC5PC
650WP4439383	4UZACGFC9PC
650WP4439442	4UZACGFC2PC
650WP4439451	4UZACGFC4PC
650WP4439531	4UZACGFC9PC
650WP4439522	4UZACGFC7PC
650WP4439414	4UZACGFC5PC
650WP4439599	4UZACGFC1PC
650WP4439754	4UZACGFC3PC
650WP4439762	4UZACGFC7PC
650NP4439933	4UZACGFC1PC

Model Year 2023 Holiday Rambler Invicta

REV Unit Identification #	Chassis VIN #
664HP4439609	1F66F5DN6N0
664RP4439955	1F66F5DNXN0
664HP4439399	1F66F5DN4N0
664RP4439689	1F66F5DNXN0
664DP4439516	1F66F5DN2N0
664DP4439577	1F66F5DN6N0
664DP4439545	1F66F5DN2N0
664HP4439650	1F66F5DN0N0
664HP4439421	1F66F5DN1N0
664MP4439438	1F66F5DN1N0
664MP4439394	1F66F5DNXN0
664MP4439503	1F66F5DN2N0
664DP4439507	1F66F5DN4N0
664HP4439510	1F66F5DN3N0
664RP4439543	1F66F5DN9N0
664MP4439583	1F66F5DN4N0
664RP4439659	1F66F5DN8N0
664HP4439685	1F66F5DN0N0
664MP4439687	1F66F5DN3N0
664RP4439681	1F66F5DN1N0
664RP4439698	1F66F5DNXN0
664MP4439705	1F66F5DN8N0
664RP4439717	1F66F5DN1N0
664DP4439750	1F66F5DN0N0
664RP4439740	1F66F5DN1N0
664MP4439718	1F66F5DNXN0
664MP4439739	1F66F5DNXN0
664MP4439742	1F66F5DN3N0
664RP4439847	1F66F5DNXN0
664DP4439803	1F66F5DN2N0
664MP4439950	1F66F5DN1N0

Model Year 2023 Holiday Rambler Navigator

REV Unit Identification #	Chassis VIN #
656NP4439558	4UZACWFC7PC
656KP4439445	4UZACWFC8PC
656FP4439480	4UZACWFC5PC
656FP4439562	4UZACWFC4PC
656NP4439452	4UZACWFC9PC
656KP4439634	4UZACWFC0PC
656FP4439725	4UZACWFC8PC
656KP4439781	4UZACWFC2PC
656FP4439823	4UZACWFC8PC
656KP4439894	4UZACWFC6PC
656NP4439931	4UZACWFC0PC

Recall 230224REV Affected Unit Serial Numbers

Model Year 2023 Holiday Rambler Nautica

REV Unit Identification #	Chassis VIN #
637MP4439828	4UZAB2FC6PC
637TP4439928	4UZAB2FC9PC
637RP4439935	4UZAB2FC7PC
637TP4439719	4UZAB2FC0PC
637MP4439678	4UZAB2FC8PC
637TP4439826	4UZAB2FC1PC
637RP4439788	4UZAB2FC8PC
637RP4439443	4UZAB2FC4PC
637RP4439761	4UZAB2FC8PC
637TP4439410	4UZAB2FC2PC
637TP4439492	4UZAB2FC7PC
637TP4439524	4UZAB2FC5PC
637RP4439521	4UZAB2FC9PC
637RP4439593	4UZAB2FC9PC
637QP4439596	4UZAB2FC1PC
637TP4439666	4UZAB2FC7PC
637RP4439528	4UZAB2FC7PC
637RP4439722	4UZAB2FC8PC
637RP4439895	4UZAB2FC5PC
637MP4439900	4UZAB2FC8PC
637MP4439932	4UZAB2FCXPC
637RP4439893	4UZAB2FC4PC
637TP4439484	4UZAB2FC3PC

Model Year 2023 Holiday Rambler Vacationer

REV Unit Identification #	Chassis VIN #
623CP4439679	1F66F5DN9N0
623KP4439736	1F66F5DN6N0
623KP4439767	1F66F5DN4N0
623CP4439511	1F66F5DN3N0
623KP4439846	1F66F5DN4N0
623FP4439488	1F66F5DN1N0
623KP4439686	1F66F5DN5N0
623GP4439538	1F66F5DN5N0
623KP4439769	1F66F5DN3N0
623KP4439395	1F66F5DN0N0
623KP4439390	1F66F5DN8N0
623FP4439849	1F66F5DN9N0
623FP4439656	1F66F5DNXN0
623KP4439392	1F66F5DN0N0
623KP4439372	1F66F5DN4N0
623CP4439461	1F66F5DN1N0
623KP4439472	1F66F5DN1N0
623KP4439582	1F66F5DNXN0
623GP4439661	1F66F5DN8N0
623FP4439664	1F66F5DN0N0
623KP4439517	1F66F5DN2N0
623GP4439939	1F66F5DN5N0
623KP4439370	1F66F5DN1N0
623KP4439373	1F66F5DN3N0
623KP4439368	1F66F5DN6N0
623KP4439431	1F66F5DN8N0
623CP4439366	1F66F5DN5N0
623KP4439469	1F66F5DN7N0
623CP4439467	1F66F5DN7N0
623FP4439487	1F66F5DN4N0
623CP4439574	1F66F5DN6N0
623KP4439549	1F66F5DN9N0
623GP4439608	1F66F5DN5N0
623CP4439573	1F66F5DN6N0
623FP4439615	1F66F5DN7N0

(2023 Holiday Rambler Vacationer serial numbers continued on next page)

Recall 230224REV Affected Unit Serial Numbers

Model Year 2023 Holiday Rambler Vacationer Con't

REV Unit Identification #	Chassis VIN #
623GP4439651	1F66F5DN6N0
623GP4439684	1F66F5DN5N0
623CP4439682	1F66F5DNXN0
623CP4439716	1F66F5DNXN0
623KP4439743	1F66F5DN7N0
623KP4439741	1F66F5DN2N0
623KP4439770	1F66F5DN9N0
623CP4439804	1F66F5DN0N0
623KP4439771	1F66F5DN6N0
623KP4439774	1F66F5DN7N0
623KP4439814	1F66F5DN0N0
623KP4439815	1F66F5DN2N0
623KP4439813	1F66F5DN4N0
623CP4439843	1F66F5DN4N0
623KP4439848	1F66F5DN8N0
623KP4439886	1F66F5DN4N0
623KP4439915	1F66F5DN0N0
623KP4439917	1F66F5DN0N0
623CP4439911	1F66F5DNXN0
623CP4439946	1F66F5DN5N0
623CP4439953	1F66F5DNXN0

Model Year 2023 American Coach American Tradition

REV Unit Identification #	Chassis VIN #
718QP4439386	4UZFCGFE3PC
718VP4439455	4UZFCGFEXP
718QP4439485	4UZFCGFE6PC
718SP4439418	4UZACGFE2PC
718VP4439497	4UZFCGFE4PC
718VP4439498	4UZFCGFE8PC