



Certification Label

| | | | |
|-----------------------|---|--------------------------|---|
| Bulletin Type: | Recall | Publication Date: | March 2023 |
| Bulletin #(s): | 23V-102 US 2023-082 Canada | Make(s): | Jayco and Entegra Coach |
| Job Code(s): | 9903583 | Model(s): | Accolade, Accolade XL, Anthem, Aspire, Cornerstone, Emblem, Esteem, Expanse, Expanse LI, Odyssey, Qwest, Reatta, Reatta XL, Alante, Greyhawk, Greyhawk Prestige, Melbourne, Melbourne Prestige, Precept, Precept Prestige, Redhawk, Redhawk SE, Seneca, Seneca Prestige, Seneca XT, Solstice, Vision, and Vision XL |
| Flat Rate(s): | 0.3 Hr. Labor - Replace Certification Label | Model Year(s): | 2022-2023 |

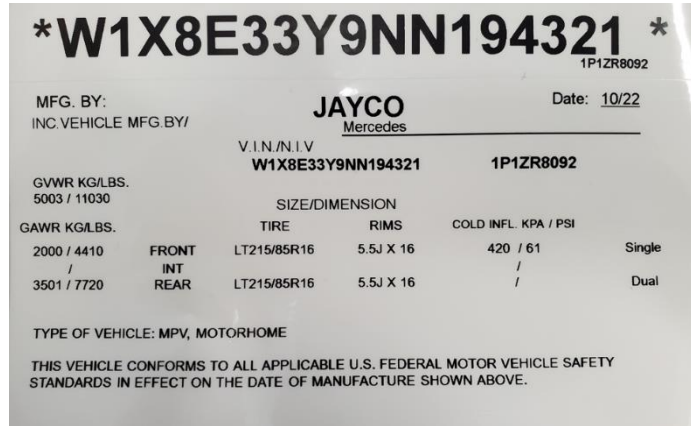
| | |
|------------------------------------|--|
| Incident: | The certification label may be missing the rear axle information including the Gross Axle Weight Rating (GAWR). |
| Affected Units: | 2022-2023 Entegra Accolade, Accolade XL, Anthem, Aspire, Cornerstone, Emblem, Esteem, Expanse, Expanse LI, Odyssey, Qwest, Reatta, Reatta XL and 2022-2023 Jayco Alante, Greyhawk, Greyhawk Prestige, Melbourne, Melbourne Prestige, Precept, Precept Prestige, Redhawk, Redhawk SE, Seneca, Seneca Prestige, Seneca XT, Solstice, Vision, and Vision XL |
| Part: | Part: Certification Label enclosed in owner/dealer notification letter |
| Misc. Tools & Supplies: | Isopropyl alcohol Shop rag |
| Parts Return Information: | N/A |

REPLACE CERTIFICATION LABEL

Remove existing label

1. **Class A** models locate the label on the inside of the RV at the interior wall next to the driver’s seat. **Class B** and **Class C** models locate the label on the inside of the driver’s door.
2. Remove the existing label. Using isopropyl alcohol and a shop rag, remove any adhesive residue from the surface where the original label was removed.
 - a. Allow the area to dry for at least 30 seconds.

The certification label below is only an example of the label you are to replace.



Certification Label

Apply new label

1. Remove the protective back from the new label. Align the new label in the same location of the original label and apply it to the surface. Remove any air bubbles from the label.
 - a. Note: Do not attempt to remove or adjust the label once it has touched the surface. Doing so may damage the label or cause it not to adhere properly to the surface.

If a label is damaged or will not properly adhere to the surface, please request a new label at compliance@jayco.com and we will send a new label.

Jayco's sole obligation under our limited warranty is to repair or replace defective materials and/or workmanship deemed our responsibility as determined by Jayco in our sole discretion. Jayco reserves the right to use new and/or remanufactured parts or materials of similar quality to complete any work, and to make parts and/or design changes as appropriate without notice to anyone. Jayco designs and/or materials changes are done without obligation to incorporate such changes in previously manufactured product. Jayco makes every reasonable effort to ensure field remedies will not adversely affect performance and/or safety of the unit. This field remedy is not intended to extend to future performance of this RV, or any of its materials, components or parts beyond the standard warranty period. The RV owner's obligation to notify Jayco, or one of its independent, authorized dealers, of a claimed defect does not modify any obligation placed on the RV owner to contact Jayco directly when attempting to pursue remedies under state or federal law.

903 South Main Street • P.O. Box 460 • Middlebury, IN 46540