



# VOLUNTARY RECALL CAMPAIGN

Classification: KS23-002	Reference: NTB23-028	Date: March 23, 2023
-----------------------------	-------------------------	-------------------------

## VOLUNTARY SAFETY RECALL CAMPAIGN 2014-2020 ROGUE AND 2017-2022 ROGUE SPORT; MECHANICAL KEY

**CAMPAIGN ID #:** R22C8  
**APPLIED VEHICLES:** 2014-2020 Rogue (T32)  
2017-2022 Rogue Sport (J11)  
**APPLIED GRADES:** S

**Check Service COMM or Dealer Business Systems (DBS)  
National Service History to confirm campaign eligibility.**

### INTRODUCTION

Nissan is conducting this voluntary safety recall campaign on certain specific model year 2014-2020 Rogue and 2017-2022 Rogue Sport vehicles to install a set screw into the keys. This service will be performed at no charge to the customer for parts or labor.

### IDENTIFICATION NUMBER

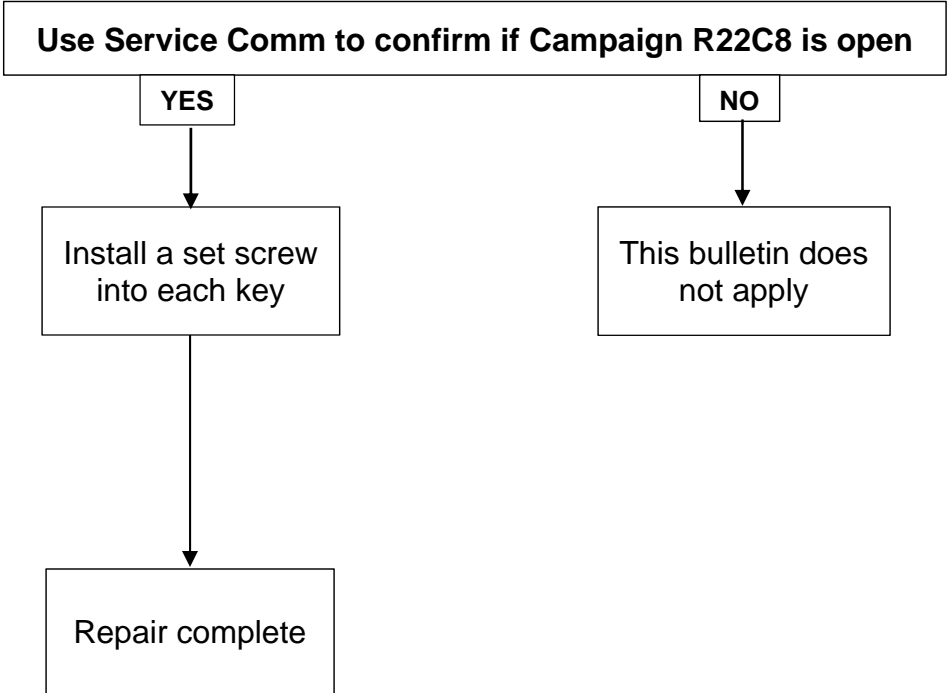
Nissan has assigned identification number R22C8 to this campaign. This number must appear on all communication and documentation of any nature dealing with this campaign.

### DEALER RESPONSIBILITY

It is the dealer’s responsibility to check Service COMM or Dealer Business Systems (DBS) National Service History for the campaign status on each vehicle falling within the range of this voluntary safety recall which for any reason enters the service department. This includes vehicles purchased from private parties or presented by transient (tourist) owners and vehicles in a dealer’s inventory. **Federal law requires that new vehicles in dealer inventory which are the subject of a safety recall must be corrected prior to sale. Failure to do so can result in civil penalties by the National Highway Traffic Safety Administration.** While federal law applies only to new vehicles, Nissan strongly encourages dealers to correct any used vehicles in their inventory before they are retailed.

Bulletins are intended for use by qualified technicians, not 'do-it-yourselfers'. Qualified technicians are properly trained individuals who have the equipment, tools, safety instruction, and know-how to do a job properly and safely. **NOTE:** If you believe that a described condition may apply to a particular vehicle, DO NOT assume that it does. See your Nissan dealer to determine if this applies to your vehicle.

# REPAIR OVERVIEW



## SERVICE PROCEDURE

**IMPORTANT:** The key blade will no longer fold once the set screw is installed. This is normal and expected.

1. Depress the key release button and fold the key blade out.
  - Verify the key blade is extended and in the locked position.



Figure 1

2. Orient the key so that the key blade storage slot is visible.

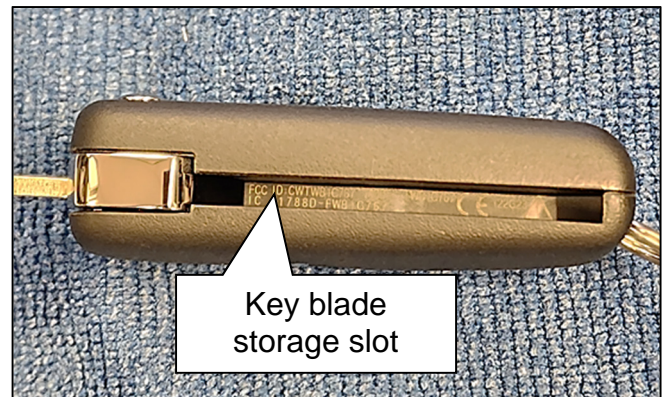


Figure 2

3. Using a suitable 3/32" hex wrench, position the set screw against the silver portion of the key.
  - The set screw will cut new threads into the key housing.

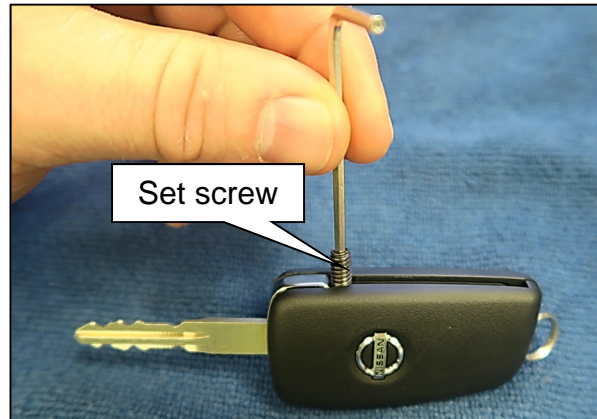


Figure 3

- While keeping the set screw straight, thread it down into the key blade storage slot until the top of the set screw is even with the lower ledge in the key blade storage slot.

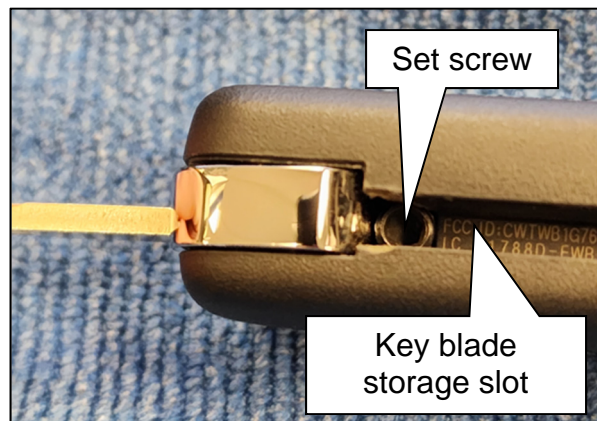


Figure 4

4. Repeat steps 1–3 on pages 3–4 for any additional keys.

**PARTS INFORMATION**

DESCRIPTION	PART NUMBER	QUANTITY
BOLT-STUD - SET SCREW	01151-0021U	As needed

**CLAIMS INFORMATION**

Submit a "CM" line claim using the following claims coding:

CAMPAIGN ("CM") ID	DESCRIPTION	OP CODE	FRT
R22C8	Install Set Screw Into Keys	R22C80	0.2

**AMENDMENT HISTORY**

PUBLISHED DATE	REFERENCE	DESCRIPTION
March 23, 2023	NTB23-028	Original bulletin published

