



Dinette Seatbelt Brackets

Bulletin Type:	Recall	Publication Date:	March 2023
Bulletin #(s):	23V-091 USA 2023-071 Canada	Make(s):	Jayco
Job Code(s):	9903584	Model(s):	Redhawk SE (22CF)
Flat Rate(s):	1.0 Hr. labor - Replace Dinette Seatbelt Brackets	Model Year(s):	2023

Incident:	Incorrect Dinette Seatbelt Brackets installed
Affected Units:	2023 Jayco Redhawk SE
Parts Kit: 23V-091	Parts Kit #: 23V-091 2 - FRAME,SBLT DIN 12.75X32.00 STL TB 8 - SCREW,HEX CAP .44-20X3.50 GR5 ZC 8 - WASHER,LK SPLIT .44 ZC 16 - WASHER,FL .44 ZC USS 8 - NUT,HEX .44-20 ZC
Misc. Tools & Supplies:	Drill with 7/16 inch drill bit Screw Gun with square bit 12" Extension 9/16" Socket 5/8" Socket Floor Jack Crowbar Torque Wrench
Parts Return Information:	N/A

INSTRUCTIONS TO REPLACE DINETTE SEATBELT BRACKETS

1. Place a floor jack under the forward (left) side of the generator.
(Figure 1)

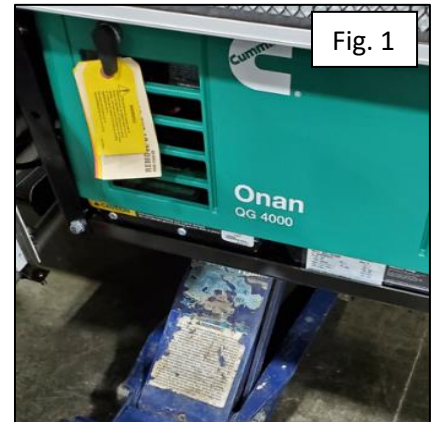


Fig. 1

2. With a 9/16" Socket, locate and remove the two bolts – one on the front side and one on the rear - holding the left side generator cradle. (Figure 2)
 - a. **NOTE: A crowbar may be needed to push the cradle to the side to gain full access to the mounting bolts.**

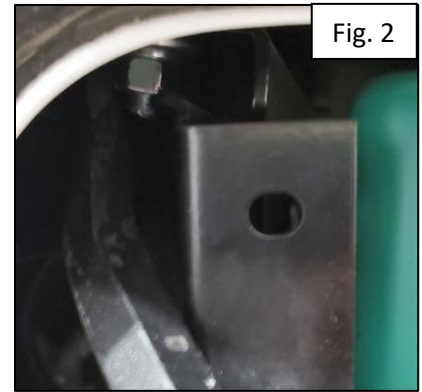


Fig. 2

3. Lower the generator to gain access. (Figure 3)



Fig. 3

4. Remove the plywood to gain access to the seatbelt frame installed – Repeat for both sides. (Figure 4)
5. With a 5/8" socket and wrench, remove the seatbelts from the top of the seatbelt frame – Repeat for both sides. (Figure 4)
 - a. **NOTE: The seatbelts and hardware need installed on the new seatbelt frames.**

6. With a 5/8" socket and wrench, remove the dinette seatbelt frames – Repeat for both sides.
 - a. **NOTE: Discard seatbelt frames but the mounting hardware will be re-used.**



Fig. 4

7. Place the new frame into the rearward dinette seat and locate. (Figure 5)
 - a. Tight against the rear of the seat.
 - b. 10.5 inches spacing between the sidewall and edge of frame.

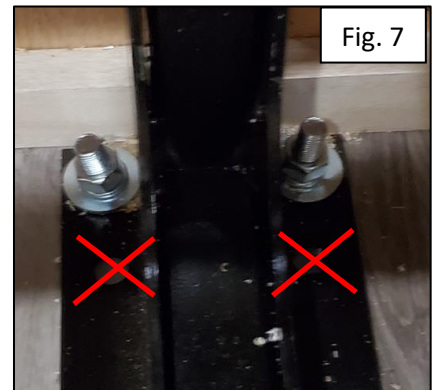


8. Using a drill and 7/16 inch drill bit, drill (4) mounting holes
9. From underside of unit, have someone push the bolts through the drilled holes and have someone else install the washer, lock washer and nut. With 5/8 socket, tighten and torque all four to 35 LBF-FT. (Figure 6)



10. Place the new frame into the forward dinette seat and locate.
 - a. Tight against the rear of the seat.
 - b. 10.5 inches spacing between the sidewall and edge of frame.

11. Using a drill and 7/16 inch drill bit, drill (4) mounting holes close to the dinette seat back. (Figure 7)
 - a. **NOTE: The mounting holes at the end (closest to the dinette seat back) MUST be used to avoid drilling into the fresh water tank.**



- From underside of unit, have someone push the bolts through the drilled holes and have someone else install the washer, lock washer and nut. With 5/8 socket, tighten and torque all four to 35 LBF-FT. (Figure 8)



- Where holes are not re-used from the previous dinette seatbelt frame, add bolt, washer, lock washer and nut to fill the hole.

- Re-install seatbelts to the top of both seat frames. Tighten and torque all four to 35 LBF-FT. Repeat for both sides. (Figure 8)

- Re-install the plywood to the dinette seat frame – Repeat for both sides. (Figure 9)



- Using the floor jack, raise the generator back into position.

- Using the hardware previously removed; re-install the generator mounting bolts – one on the front side and one on the rear - holding the left side generator cradle.

NOTE: Use a crowbar (If need be) to push the cradle to the side to gain full access for the mounting bolts.

Jayco's sole obligation under our limited warranty is to repair or replace defective materials and/or workmanship deemed our responsibility as determined by Jayco in our sole discretion. Jayco reserves the right to use new and/or remanufactured parts or materials of similar quality to complete any work, and to make parts and/or design changes as appropriate without notice to anyone. Jayco designs and/or materials changes are done without obligation to incorporate such changes in previously manufactured product. Jayco makes every reasonable effort to ensure field remedies will not adversely affect performance and/or safety of the unit. This field remedy is not intended to extend to future performance of this RV, or any of its materials, components or parts beyond the standard warranty period. The RV owner's obligation to notify Jayco, or one of its independent, authorized dealers, of a claimed defect does not modify any obligation placed on the RV owner to contact Jayco directly when attempting to pursue remedies under state or federal law.

903 South Main Street • P.O. Box 460 • Middlebury, IN 46540