



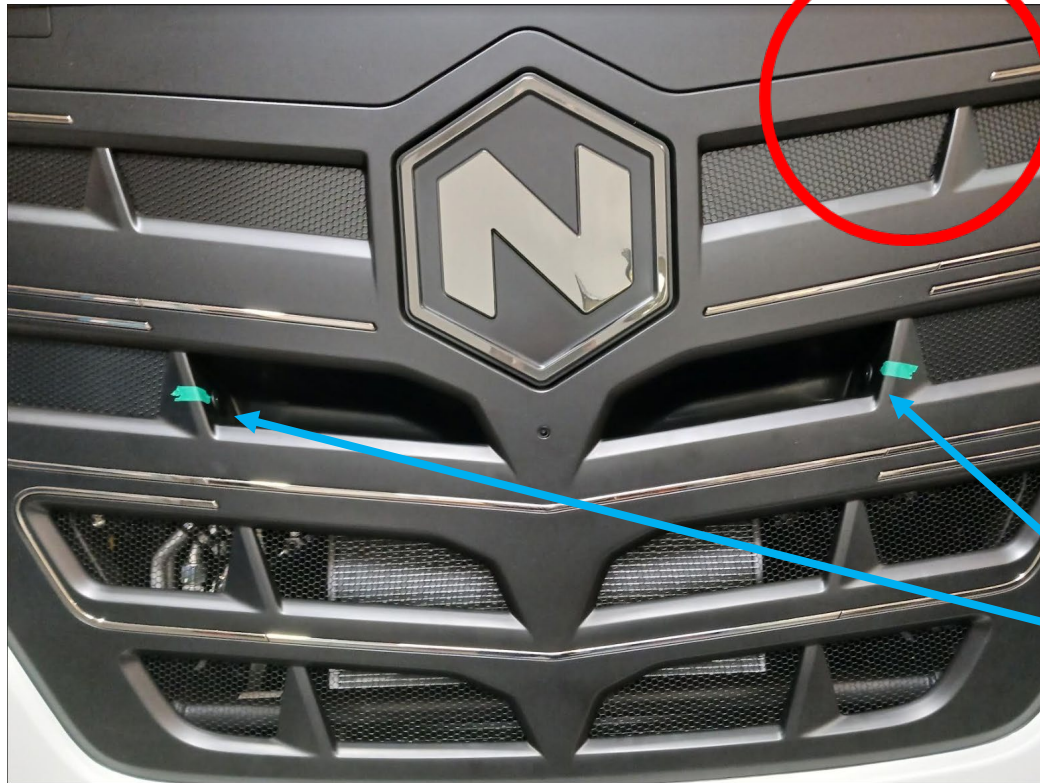
NIKOLA™

**BRAKE PEDAL
ASSEMBLY INSPECTION**

(9/15/2022)

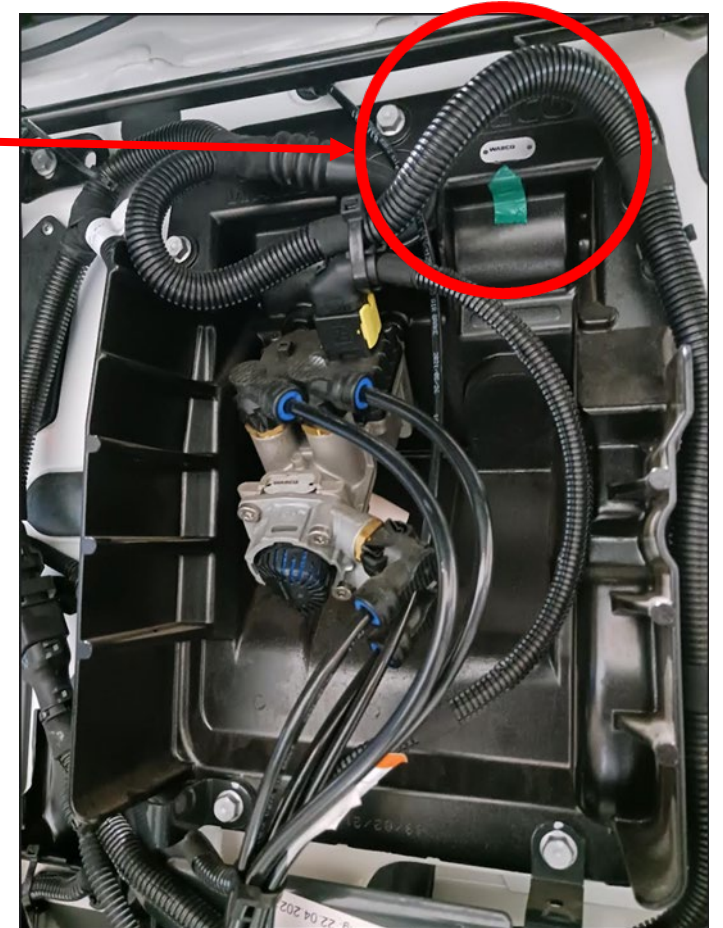


Step 1: Lift hood and locate supplier production date for the Brake Pedal Assembly



*Approximate area of supplier production date plate under Hood

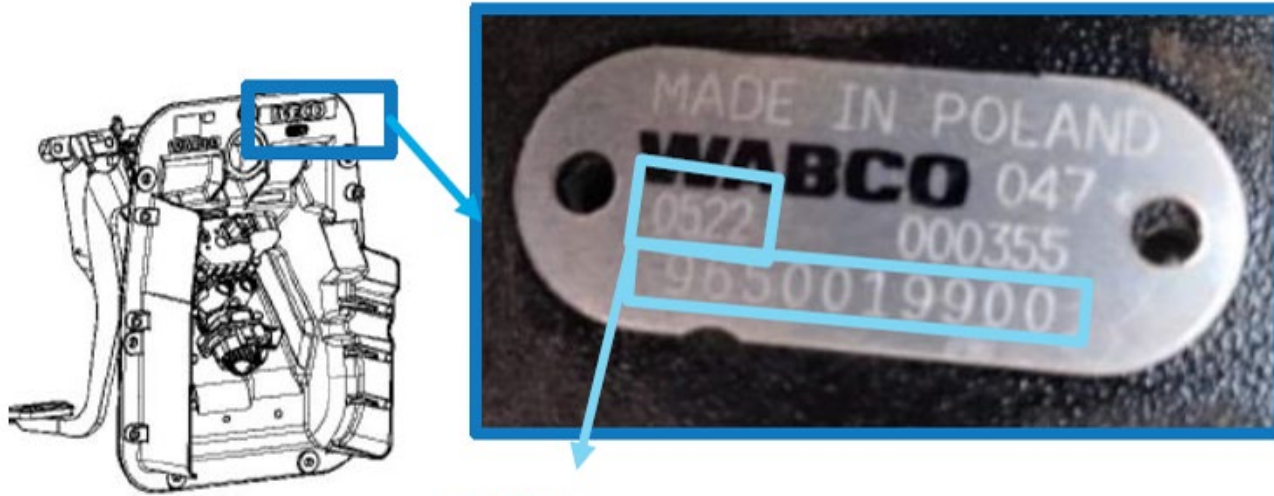
*Hood is opened by pressing two buttons simultaneously



CONFIDENTIAL

Step 2: Verify if vehicle is within suspect range

1. Engine side – nameplate with production date



0522

CW – calendar week of production

YY – year of production

9650019900 – ZF Part Number

5802814623 – IVECO PN

00612809 – NIKOLA PN

Suspected parts for inspection
BEFORE CWYY 1522

***NOTE:** Further inspection not required if date of production is CW15 of 2022 or later



CONFIDENTIAL

Step 3: Insert Borescope into Brake Pedal opening

- **A)** Locate Brake Pedal Assembly on driver`s side
- **B)** Turn on borescope and insert camera approximately 6-7 inches inside the opening of the Brake Pedal Assembly, following the **RIGHT** side of the pedal
- **NOTE:** Camera should glide against pedal and may need to be manipulated in order to locate suspect screw (**see slide 5 if using side view borescope**)

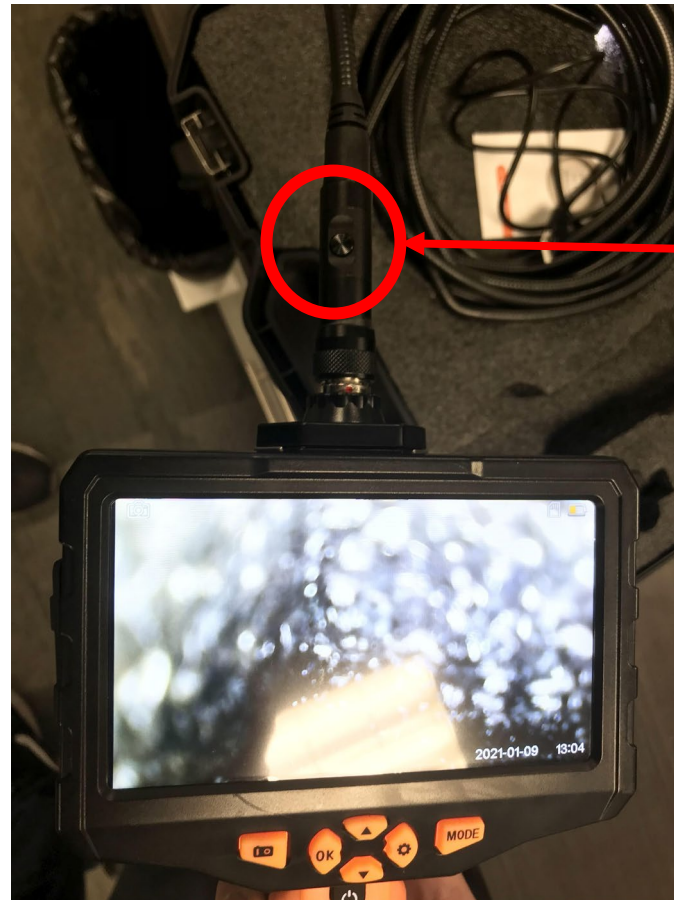


*It is recommended to mark the borescope to assist in inserting the appropriate length



CONFIDENTIAL

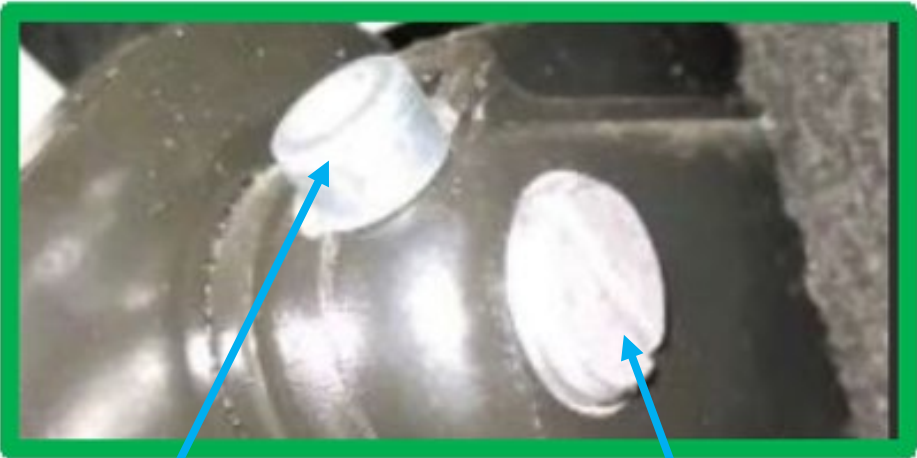
NOTE: If using a borescope with a side camera, use the button located above the screen to alternate to the side view in order to locate the screw



CONFIDENTIAL

Step 4: Locate the suspect screw and verify the status of the Brake Pedal Assembly screw and pin

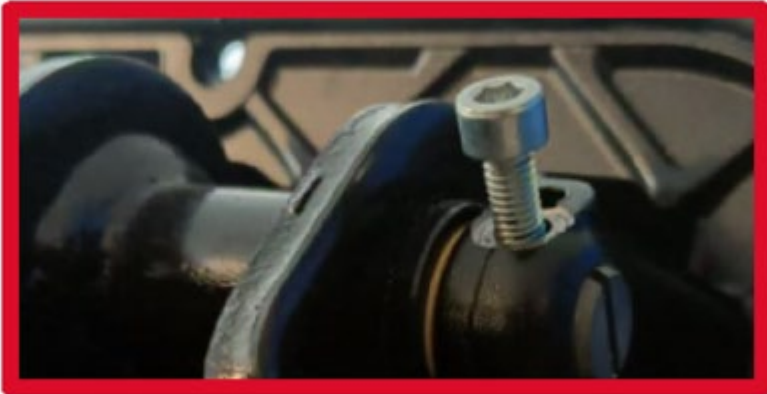
GOOD PART – screw tightened



Screw

Pin

BAD PART – screw not tightened



BAD PART – missing screw



CONFIDENTIAL