

RECALL 23V061 / 2023-025 REMEDY INSTRUCTIONS



Make(s): GALLERIA, BEYOND & NOVA
Model(s): MANY, SEE BELOW
Model Year(s): 2022 - 2023

Concern:
The internal aluminum burner tubes connecting the gas valves to the cook top burners can fracture from excessive vibration or shock experienced in recreational vehicles.

Repair Code: RC-029-03-00-004303
Allotted Time: 1.00 HRS.
Inspection Code: RC-029-05-00-004308
Allotted Time: .25 HRS.

Photo(s) Required: YES
Prior Authorization Required: YES
Part(s) Kit Number: F100388830
Part(s) Return: N/A

Disconnect the vehicles' battery Positive and Negative, disconnect any House battery(s) Positive and Negative, if equipped with a generator ensure it is off and lastly, ensure the vehicle is disconnected from shore power. Turn off LP Gas at LPG Tank. Block any tires/wheels to prevent the vehicle from rolling. Failure to do so may result in electrocution, fire or other personal injury, property damage and/or death.

Models:

Galleria: GAB24AM4X4, GAB24FLM4X4, GAB24QM

Beyond: BYB22CAWD, BYB22DAWD, BYB22RBAWD, BYB22CFCD

Nova: NAB20RB

SEE THE INCLUDED INSTRUCTIONS FROM SUBURBAN

521337/521340 SDS2 FIELD RECALL KIT INSTRUCTION SHEET FOR STOCK NUMBERS 3031AST AND 3032AST

▲ WARNING

Improper installation, adjustment, alteration, service or maintenance can cause property damage, personal injury or loss of life. Refer to the installation instructions and/or owners manual provided with your appliance. The removal and re-installation of the appliance as well as the installation of component parts must be made by a qualified installer, service agency or the gas supplier.

Installation of this appliance must be made in accordance with the written instructions provided in the manual. No agent, representative or employee of Airxcel, Inc., Suburban Division or other person has the authority to change, modify, or waive any provision of the instructions contained in the manual or instruction sheet.

This kit is for remedy of SDS2 cooktops under NHTSA recall 23E-002.
Warranty Flat Rate Labor Time 0.25 hrs.

KIT 521337 CONSISTS OF:

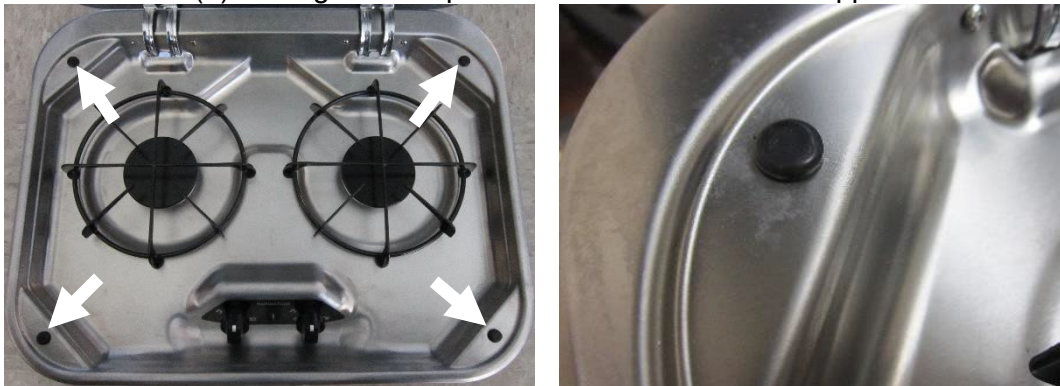
- (1) BRACKET ASSEMBLY WITH TAPE, PN 064351
- (2) SCREW, #6 X .375", PN 122292
- (1) STICKER, CSA SDS2 12VDC, PN 194462 (USED FOR REMEDY OF STOCK NUMBER 3032AST)
- (1) LOCTITE 243 THREADLOCKER, PN 410350

KIT 521340 CONSISTS OF:

- (1) BRACKET ASSEMBLY WITH TAPE, PN 064351
- (2) SCREW, #6 X .375", PN 122292
- (1) STICKER, CSA SDS2 1.5VDC, PN 194460 (USED FOR REMEDY OF STOCK NUMBER 3031AST)
- (1) LOCTITE 243 THREADLOCKER, PN 410350

ASSEMBLY INSTRUCTIONS:

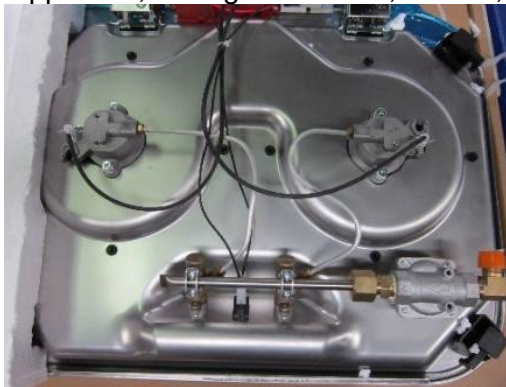
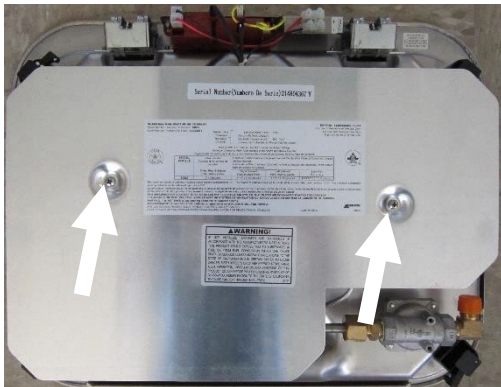
1. Open glass lid.
2. Remove (4) black glass bumpers from each corner of the appliance.



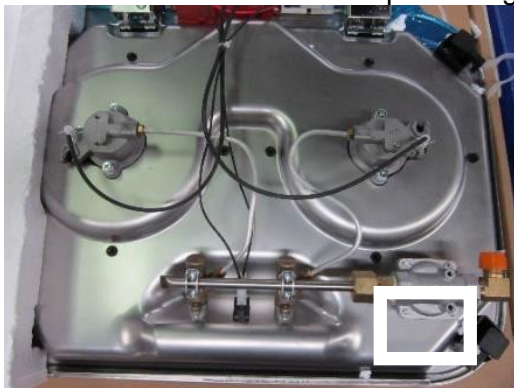
3. Using a #2 Phillips screwdriver, loosen the screws under each bumper. This will retract the clamping mechanism that attaches the cooktop to the countertop.



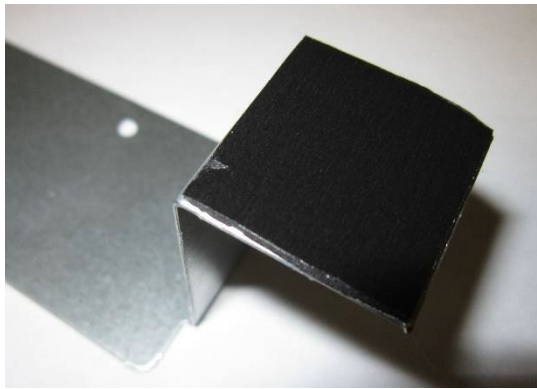
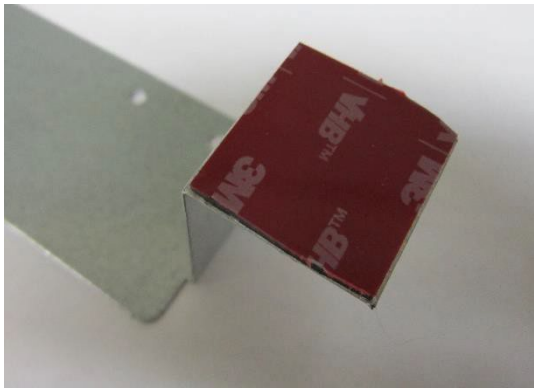
4. Close glass lid.
5. Lift cooktop free of countertop and place bottom side up on soft working surface. If gas supply piping does not allow removal of cooktop from countertop without disconnecting appliance, shut off the gas supply at the source and disconnect the flare fitting at the appliance. The appliance can now be removed.
6. Remove heat shield from bottom of appliance, setting heat shield, screws, and washers aside.



7. Visually inspect the gas tubes connecting the gas valve to the burner orifice holder for any cracks, splits, etc. Ensure no gas lines are loose by gently pulling the tubing along its axis away from each brass nut. Use only two fingers. If any gas lines are loose, stop the recall kit process and request a replacement unit by contacting Suburban Tech Support at 574-247-9235, option 5.
8. Clean bottom of main top near regulator with a 50/50 mixture of rubbing alcohol and water.

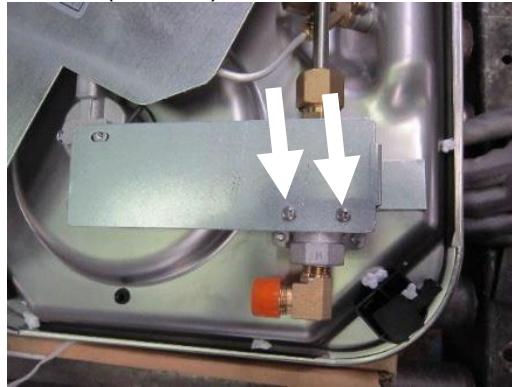
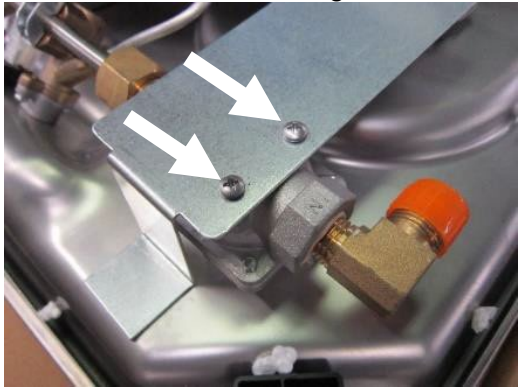


9. Peel red liner from tape on bottom of bracket assembly (064351).



10. Place bracket assembly over regulator and align screw holes. (Ensure regulator mounting surface is parallel to bottom of main top.)

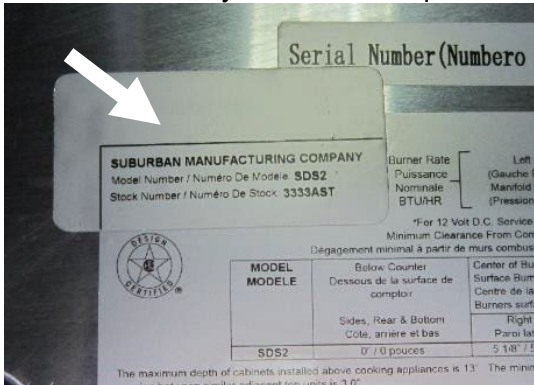
11. Attach bracket to regulator with two screws (122292).



12. Apply force of 15 lbs. minimum to regulator bracket to firmly adhere VHB tape. (Minimum application temperature of 50°F. If necessary, heat tape and application surfaces prior to adhesion.)

13. Reinstall heat shield using retained screws and washers.

14. Cover "3031AST" with sticker (194460) or cover "3032AST" with sticker (194462) on large heat shield sticker. Clean oily residue as required for proper label adhesion.



15. Turn unit over and open glass lid.

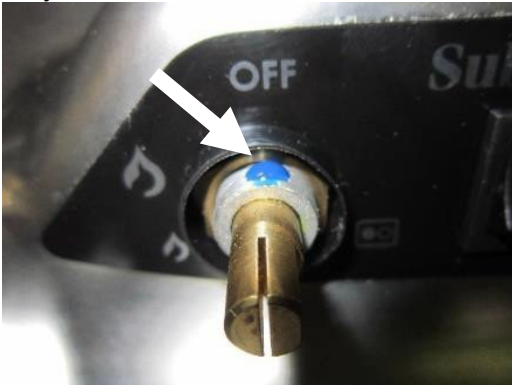
16. Remove both burner control knobs.

17. Using needle nose pliers, remove top nut securing the left valve to the main top. Your cooktop may have one or two nuts securing each gas valve.



18. Tighten bottom nut if your cooktop had two nuts on each gas valve.

19. Snip tip of Loctite 243 (410350) and apply one drop of threadlocker to approximately 2nd valve thread if each valve has two nuts. Apply one drop of threadlocker to approximately the 4th thread if each valve has only one nut.



20. Install top nut and torque to 20 in-lb.



21. Reinstall control knob.



22. Repeat steps 16 through 20 for the right control.

23. Reinstallation of unit is reverse of removal. (Steps 1-5) If the gas supply was disconnected, reconnect the gas supply piping and turn on the gas supply. Check for any leaks using an appropriate leak check procedure. See the Installation, Operation, and Maintenance Manual that came with the appliance for more information.

24. This completes the recall remedy steps.