

RECALL 23V015 / 2023-014 REMEDY INSTRUCTIONS



Make(s): AMERA-LITE CARGO TRAILER
 Model(s): MANY, SEE BELOW
 Model Year(s): 2016 - 2017

Concern:
 The drawbars welded to the vehicle may be out of specification for the vehicles' Gross Vehicle Weight Rating ("GVWR").

Repair Code: N/A
 Allotted Time: N/A
 Inspection Code: RC-094-05-00-004296
 Allotted Time: .25 HRS.
 Photo(s) Required: YES
 Prior Authorization Required: N/A
 Part(s) Kit Number: N/A
 Part(s) Return: N/A

Disconnect the vehicles' battery Positive and Negative, disconnect any House battery(s) Positive and Negative, if equipped with a generator ensure it is off and lastly, ensure the vehicle is disconnected from shore power. Block any tires/wheels to prevent the vehicle from rolling. Failure to do so may result in electrocution, fire or other personal injury, property damage and/or death.

CERTAIN: 2016 – AMERA-LITE - ADXST717TA2, ADXST719TA2, ADXST723TA3, ADXST729TA2, ADXST731TA2 & ADXST733TA3
 CERTAIN: 2016 – 2017 - AMERA-LITE - ADXST721TA2, ADXST723TA2, ADXST725TA2 & ADXST727TA2
 CERTAIN: 2016 – AMERA-LITE - ARXST719TA2, ARXST723TA2, ARXST725TA2, ARXST727TA2, ARXST729TA2, ARXST733TA2 & ARXST8530TA2
 CERTAIN: 2016 – 2017 – AMERA-LITE - ARXST721TA2

PERFORM INSPECTION

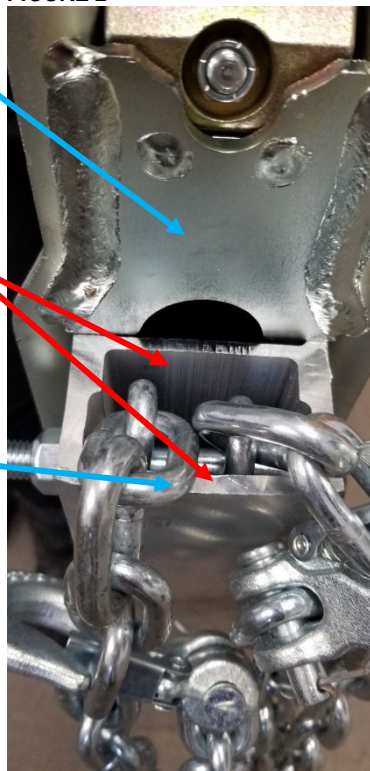
STEP 1: WITH THE TRAILER DISCONNECTED FROM A TOW VEHICLE;

- LOOK UNDER THE COUPLER AT THE OPEN END OF THE DRAWBAR WHICH THE COUPLER IS BOLTED TO AND MATCH IT TO EITHER FIGURE 1 OR FIGURE 2;
- TAKE CLEAR PHOTO'S SHOWING THE OPEN END OF THE DRAWBAR TUBE THAT THE COUPLER IS BOLTED TO;

FIGURE 1



FIGURE 2



COUPLER

ALUMINUM DRAWBAR

SAFETY CHAINS & BOLT

NEXT STEPS

STEP 1: IF THE DRAWBAR MATCHES FIGURE 1 – THE DRAWBAR **NEEDS** TO BE REPLACED;

- SUBMIT PHOTO'S WITH THE INSPECTION CODE (AT THE TOP OF THIS DOCUMENT) THEN CONTACT THE MANUFACTURING PLANT CUSTOMER SERVICE AND WARRANTY DEPARTMENT FOR FURTHER INSTRUCTION AT (574) 848-1335;
- IF THE DRAWBAR MATCHES FIGURE 2 – THE DRAWBAR **DOES NOT** NEED TO BE REPLACED;
 - SUBMIT PHOTO'S WITH THE INSPECTION CODE (AT THE TOP OF THIS DOCUMENT) THE VEHICLE WILL THEN BE CLEARED OF THE RECALL ONCE THE CLAIM IS PROCESSED.