



## IMPORTANT SAFETY RECALL

RECALL NO. 23T-010

January 2024

**This notice applies to your tire.**

Dear Valued Falken Customer:

This notice is sent to you in accordance with the National Traffic and Motor Vehicle Safety Act.

Sumitomo Rubber USA, LLC (SRUSA) has decided certain Falken brand WildPeak AT3W and HT02 light truck and car tires manufactured between June 26, 2023 and August 23, 2023 fail to conform to Federal Motor Vehicle Safety Standard No. 139, *New pneumatic radial tires for light vehicles*. SRUSA has initiated a safety recall for the WildPeak A/T3W and H/T02 tires detailed in the list of affected tires at the end of this notice (the Affected-Tire List).

We are notifying you because our distributor's records indicate that you may have purchased a tire or tires subject to this recall. Therefore, please review this letter carefully.

### **What is the Problem?**

The recalled tires may have sustained a puncture in the sidewall during manufacturing. As a result, some affected tires may contain a puncture penetrating the tire's inner liner, which may quickly leak air upon mounting leading to a flat tire and potentially fail to meet the requirements of FMVSS No. 139 S6. Loss of air under certain conditions could increase the risk of a crash. Vehicles equipped with a Tire Pressure Monitoring System (TPMS) may detect loss of tire air pressure.

### **What Are We Doing About the Problem?**

Consistent with the company's longstanding commitment to safety, customer satisfaction and service, SRUSA will replace tires subject to the recall with new tires, and mount the replacement tires, all at no charge to you through **August 15, 2024**. Any tire subject to this recall will be replaced with a comparable

Falken tire. In the event that a Falken brand tire is not currently available, a suitable competitive product may be used as a replacement.

### How Do You Identify Recalled Tires?

Tires have certain unique sidewall markings that will allow you to determine whether they are subject to this recall. The affected-tire list describes the **tire brand, tire line, tire size, tire identification number, and mold number (circled in red)** for each of the tires subject to this recall. Any tire that has **all five markings** described in the affected-tires list is subject to this recall.



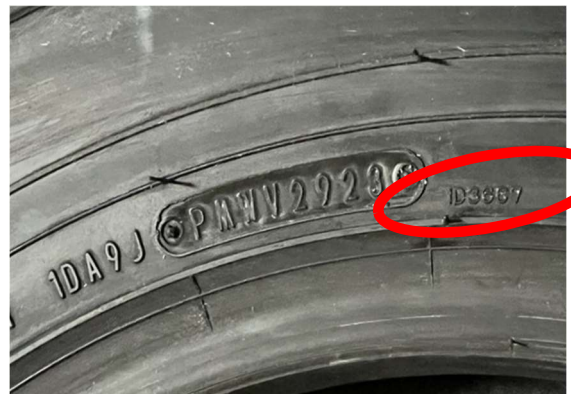
The tire identification number (TIN) can be found on the sidewall, as shown below. The TIN starts with the letters “DOT” with the last four numbers being the week and year manufactured, as shown circled in red below.



The mold number is located after the TIN as shown circled in red below.

AT3W 265/70R17 1215T

HT02 LT235/85R16 120/116S



### How To Have Your Tires Replaced

If any of your tires contain all five of the above-described sidewall markings, please take your vehicle as soon as possible to a Falken authorized dealer/retailer. The authorized Falken dealer/retailer will confirm the inspection and replace all affected tires. Only tires matching the recall description will be replaced.

# SUMITOMO RUBBER USA, LLC



If you purchased your affected tire(s) from a Discount Tire Center (DTC) retailer or America's Tire in California (ATC), you may return the affected tire(s) to a DTC or ATC retailer location (*store locator* <https://www.discounttire.com/store-locator>).

If you purchased your affected tire(s) at another authorized dealer, please use our dealer locator at <https://www.falkentire.com/find-dealer> to find a Falken dealer in your area.

The authorized retailer will confirm the inspection and replace all affected tires. Only tires matching the recall description will be replaced.

If you have any questions about whether your tires are covered by this recall, please contact Falken's customer service at **1-877-763-0416**.

## Questions or Concerns?

If you have questions or concerns about this recall, please contact Falken's customer service at **1-877-763-0416**, or **Warranty@srnatire.com**. For email, please use the subject line: "Recall No. 23T-010 Customer Information."

If you believe that SRUSA or a retailer has failed or is unable to provide a remedy without charge within a reasonable time, you may submit a complaint to: Administrator, National Highway Traffic Safety Administration, 1200 New Jersey Avenue, SE, Washington, DC 20590; or call the toll-free Vehicle Safety Hotline at 1-888-327-4236 (TTY: 1-800-424-9153); or go to <http://www.safercar.gov>.

We are taking this action in the interest of your safety and satisfaction with our products. We apologize for any inconvenience and thank you for your attention to this matter.

Sincerely,

Sumitomo Rubber USA, LLC.

Enclosure

**AFFECTED-TIRE LIST**

FTC #	DTC #	Brand	Tire Line & Size	13 Digit Tire Identification Number (TIN)				
				Plant ID	Size Code	Opt Code	DOT Weeks	Mold Number
28034300	26514	Falken	WildPeak AT3W 265/70R17 115T	DA	70	3MDR	3023, 3123, 3223, 3323, 3423	1B9610
28820474	44912	Falken	WildPeak HT02 LT235/85R16 120/116S	1DA	9J	PMWV	2623, 2723, 2823, 2923	1D3667