

# ***SERVICE PROCEDURE***

**23514R3**  
**April, 2024**

**SUBJECT: NONCOMPLIANCE RECALL**  
**Back-up lights on certain International® trucks with feature code 01WPN, 01WPS, or 01VAL (pintle hook, includes mounting bracket for lowering pintle hook)**

## **CUSTOMER LETTER**

Print ready (PDF file) copy of the [Customer Letter](#)

## **REASON FOR REVISION**

Procedural steps added.

## **DEFECT DESCRIPTION**

Certain trucks may not conform to Federal Motor Vehicle Safety Standard (FMVSS) 108 - If any required light or reflective device is obstructed by motor vehicle equipment, the vehicle must be equipped with an additional light or device of the same type. Specifically, Navistar did not equip these vehicles with additional unobstructed backup lights. Backup lights that do not conform to all the requirements of FMVSS 108 while in bobtail mode and in reverse with obstructed backup lights may increase the risk of a vehicle crash.

## **MODELS INVOLVED**

The International® trucks feature and build date combinations listed below may not conform to Federal Motor Vehicle Safety Standard (FMVSS) 108 visibility requirement.

- **2001 thru 2003 9100i model trucks**
- **2001 thru 2010 9200i model trucks**
- **2008 thru 2018 ProStar® model trucks**
- **2018 thru 2024 RH™ Series trucks**



- 2004 thru 2009, 2011, 2012, and 2016 4400 model trucks
- 2013 7600 model trucks
- 2023 8100 model trucks
- 2002 thru 2007 8500 model trucks
- 2003 thru 2018 8600 model trucks
- 2001 thru 2007 9400i model trucks
- 2003 thru 2007, 2009 thru 2011, 2013, and 2017 9900i model trucks
- 2004 and 2007 9900iX model trucks
- 2015 thru 2017, 2019 thru 2022, and 2024 LoneStar® Series trucks
- 2017 thru 2024 LT® Series trucks
- 2019 thru 2024 MV™ Series trucks

## **ELIGIBILITY**

This procedure applies ONLY to vehicles marked in the International® Service Portal<sup>SM</sup> with Noncompliance Recall 23514. Also complete any other open campaigns listed on the Service Portal at this time.

## **PARTS INFORMATION**

**NOTE: Use the following link and type the 17-digit vehicle identification number into the search box. Click the search button to obtain the correct parts, service procedure and SRTs to complete the ordering process.**

[Recall 23514 – Backup Lights](#)

<b>Part Number</b>	<b>Part Description</b>	<b>Quantity</b>
289862C1 or Source Locally	Cable tie strap, 6-inch	As needed

**Table 1** Parts Information

## SERVICE PROCEDURE

**WARNING!** To prevent personal injury and / or death, or damage to property, park vehicle on hard flat surface, turn the engine off, set the parking brake and install wheel chocks to prevent the vehicle from moving in either direction.

**WARNING!** To prevent personal injury and / or death, or damage to property, if the vehicle must be raised, do not work under the vehicle supported only by jacks. Jacks can slip or fall over.

**WARNING!** To prevent personal injury and / or death, always wear safe eye protection when performing vehicle maintenance.

**WARNING!** To prevent personal injury and / or death, or damage to property, allow engine / vehicle components to cool before servicing.

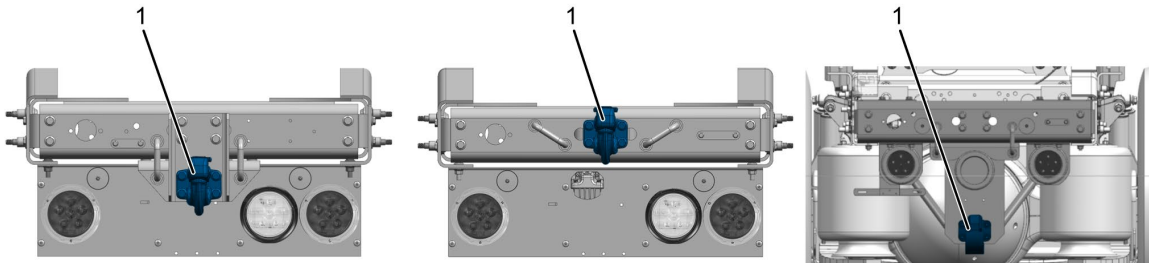
**WARNING!** To prevent personal injury and / or death, or damage to property, keep flames or sparks away from vehicle and do not smoke while servicing the vehicle's batteries. Batteries expel explosive gases.

**WARNING!** To prevent personal injury and / or death, or damage to property, remove the ground cable from the negative terminal of the battery box before disconnecting any electrical components. Always connect the ground cable last.

1. Park vehicle on flat surface.
2. Shift transmission to Park or Neutral and set parking brake.
3. Turn vehicle ignition to Key OFF position.
4. Install wheel chocks.

**NOTE: First inspect the type of light assembly and pintle hook that applies to the vehicle. Then select the appropriate procedure for specific repair / installation instructions.**

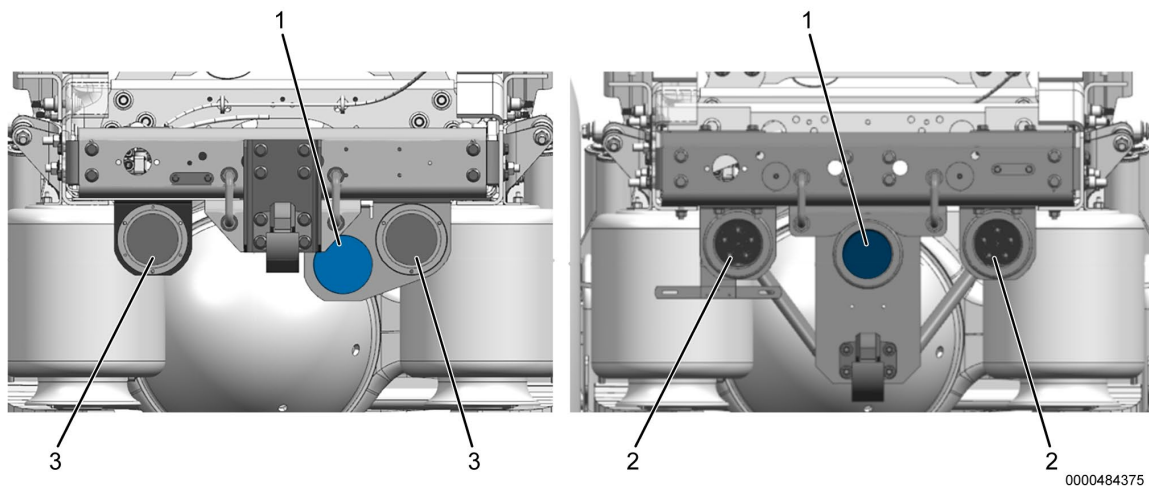
## **Instructions to Inspect the Type of Light Assembly and Pintle Hook**



0000484374

**Figure 1. Pintle Hook Examples**

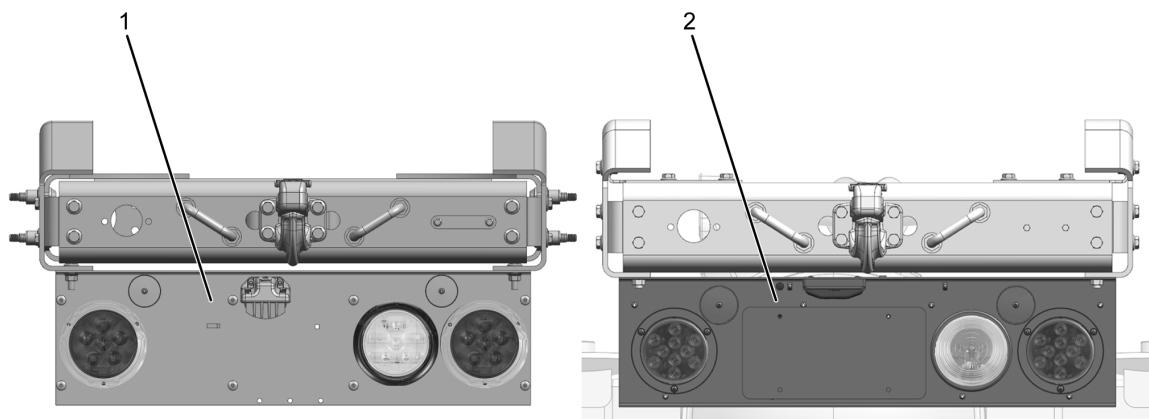
1. Pintle hook
  
5. Inspect the rear of the vehicle to determine if the vehicle has a pintle hook or not (Figure 1, Item 1). There are different configurations for pintle hook mounting.
  - a. If the vehicle does not have a pintle hook or bracket and pintle hook, the vehicle has been modified and no repair is required. Remove wheel chocks.
  - b. If the vehicle does have a pintle hook, proceed to the next Step.



**Figure 2. Super 40 / 44 Taillights**

1. Backup light
2. Truck-Lite Super 40 taillights
3. Truck-Lite Super 44 taillights

0000484375



**Figure 3. Truck-lite and Grote Light Assembly**

1. Truck-Lite light assembly Super 40 / 44
2. Grote light assembly

0000484376

6. Determine the type of taillights on the vehicle.
  - a. Does the vehicle have the type of lights shown in Figure 2?
    - i. Yes, refer to the proper procedure using the link in the Parts Information section.
    - ii. No, proceed to next Step.

- b. Does the vehicle have the type of lights shown in Figure 3?
  - i. Yes, refer to the proper procedure using the link in the Parts Information section.
  - ii. No, proceed to next Step.
- 7. If the vehicle does not have either style, then the vehicle has been modified. No repair is required. Remove wheel chocks.

**NOTE: Following inspection, if a repair is required, click on the link located in the Parts Information Section and enter the affected VIN. The link will provide the parts required and the repair procedure for that vehicle. In the table below, click on the appropriate procedure letter to display the specific instructions for the vehicle you are working on.**

Description
<a href="#"><b>Procedure A</b></a> : Instructions to Replace Both Tail / Stop / Lights With Rubber Grommets and Harness
<a href="#"><b>Procedure B</b></a> : Instructions to Replace Both Tail / Stop / Lights With Anti-Theft Feature and Harness
<a href="#"><b>Procedure C</b></a> : Instructions to Install New Truck-Lite Light Assembly for 4x2 Vehicles Only
<a href="#"><b>Procedure D</b></a> : Instructions to Install New Truck-Lite Light Assemblies for 6x4 and 6x2 Vehicles Only
<a href="#"><b>Procedure E</b></a> : Instructions to Install New Grote Light Assemblies for 4x2 Vehicles Only With 0001WRK
<a href="#"><b>Procedure F</b></a> : Instructions to Install an Extension Bracket to Lower the Light Assembly and not Replace the Light Assembly For 4x2 Vehicles Only With 0001WSR
<a href="#"><b>Procedure G</b></a> : Instructions to Install Extension Bracket to Lower the Light Assembly and New Light Assembly for 6x4 And 6x2 Vehicles Only

## **Procedure A: Instructions to Replace Both Tail / Stop / Lights With Rubber Grommets and Harness**

1. Verify vehicle ignition switch and vehicle headlight switch are both in the OFF position.
2. Using a flat tipped screwdriver, carefully remove each taillight from the grommet.
3. Disconnect electrical connector from each taillight and discard lights.

**NOTE: Install new taillight with the clear section of the lens positioned at the bottom.**

4. Install new taillights. Do not connect electrical connector at this time.
5. Disconnect electrical connector from the backup light. Do not remove backup light.
6. Remove screw securing harness ground terminal. Save screw for reuse.
7. Note and record all clipping points for the rear lighting harness and the rear chassis harness.
8. If equipped, remove P-clamp securing rear lighting harness in place and save for reuse.
9. Remove any cable tie straps securing lighting harness. Discard cable tie straps.
10. Disconnect rear lighting harness from rear chassis electrical connector. Discard rear lighting harness.
11. Apply dielectric grease to new harness connectors.
12. Connect new harness to each new taillight, backup light, and ground terminal using previously removed screw.
13. Connect rear lightning harness connector to chassis electrical connector.
14. Using previously recorded clipping point locations, route new harness and secure with cable tie straps.
15. If equipped, install previously removed P-clamp and secure with cable tie strap.

16. Turn ignition to KOER (Key ON Engine RUNNING) position and verify taillights, turn signals, and backup light work properly.
17. Remove wheel chocks.

### **Procedure B: Instructions to Replace Both Tail / Stop / Lights With Anti-Theft Feature and Harness**

1. Verify vehicle ignition switch and vehicle headlight switch are both in the OFF position.
2. Using a drill and a 3/16-inch drill bit, remove the rivets securing both taillights.
3. Using a flat tipped screwdriver, carefully remove each taillight from each bracket.
4. Disconnect electrical connector from taillights and discard lights.

**NOTE: Install new taillight with the clear section of the lens positioned at the bottom.**

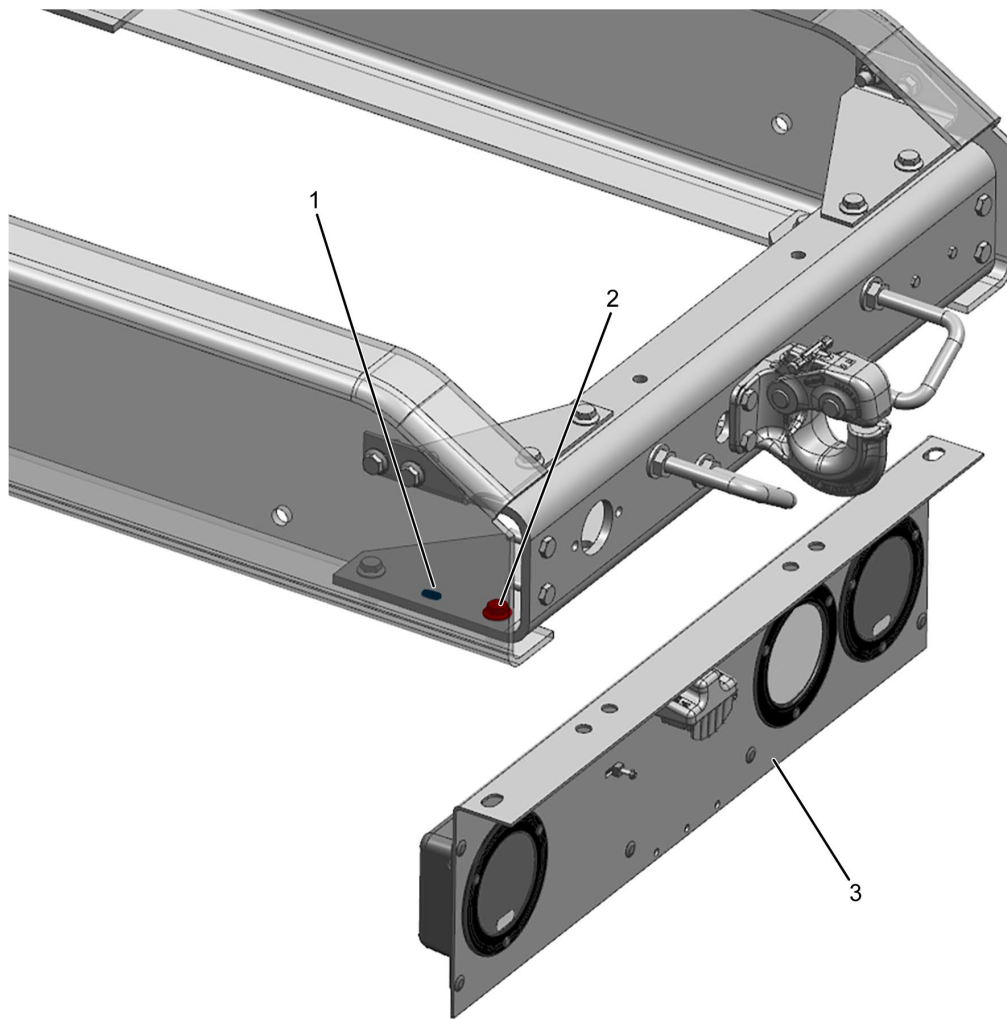
5. Position new taillights into bracket. Do not connect electrical connector at this time.
6. Using a rivet gun, secure each taillight with new rivets.
7. Disconnect electrical connector from backup light. Do not remove backup light.
8. Remove screw securing harness ground terminal. Save screw for reuse.
9. Note and record all clipping points for the rear lighting harness and rear chassis harness.
10. If equipped, remove P-clamp securing rear lighting harness in place and save for reuse.
11. Remove any cable tie straps securing lighting harness. Discard cable tie straps.
12. Disconnect rear lighting harness from rear chassis electrical connector. Discard rear lighting harness.
13. Apply dielectric grease to new harness connectors.
14. Connect new harness to each new taillight, backup light, and ground terminal using previously removed screw.



15. Connect rear lighting harness connector to chassis electrical connector.
16. Using previously recorded clipping point locations, route new harness and secure with cable tie straps.
17. If equipped, install previously removed P-clamp.
18. Turn ignition to KOER (Key ON Engine RUNNING) position and verify taillights, turn signals, and backup light work properly.
19. Remove wheel chocks.

### **Procedure C: Instructions to Install New Truck-Lite Light Assembly for 4x2 Vehicles Only**

1. Verify vehicle ignition switch and vehicle headlight switch are both in the OFF position.
2. Note and record all clipping points for rear lighting harness at rear chassis harness.
3. If equipped, remove P-clamp securing rear lighting harness in place and save for reuse.
4. Remove any cable tie straps securing lighting harness in place.
5. Disconnect rear lighting harness from rear chassis electrical connector.
6. If vehicle is equipped with a backup alarm mounted to the light assembly, disconnect wire harness from backup alarm. Using mounting bolts, transfer backup alarm to new light assembly, tighten bolts securely, and connect harness to pigtail on light assembly.
7. Remove two mounting bolts and nuts securing light assembly to the frame. Save fasteners for reuse.
8. Discard taillight assembly.



0000484372

**Figure C1. Truck-Lite Mounting Location - Rear Crossmember 4X2**

- 1. Original light location
- 2. Bolt
- 3. Light assembly

9. Remove rear bolt (Figure C1, Item 2) on each side at rear crossmember and loosely install bolts in holes of original light location (Figure C1, Item 1).
10. Using previously removed fasteners, install new taillight assembly (Figure C1, Item 3) to rearmost mounting holes.
11. Using torque wrench and backup wrench, tighten four bolts to 65-80 lb-ft (88-108 N·m).
12. Apply dielectric grease to new harness connectors.
13. Connect rear lighting harness connector to chassis electrical connector.

14. Using previously recorded clipping point locations, route new harness and secure with cable tie straps.
15. If equipped, install previously removed P-clamp.
16. Turn ignition to KOER (Key ON Engine RUNNING) position and verify that the taillights, turn signals, and backup light work properly.
17. Remove wheel chocks.

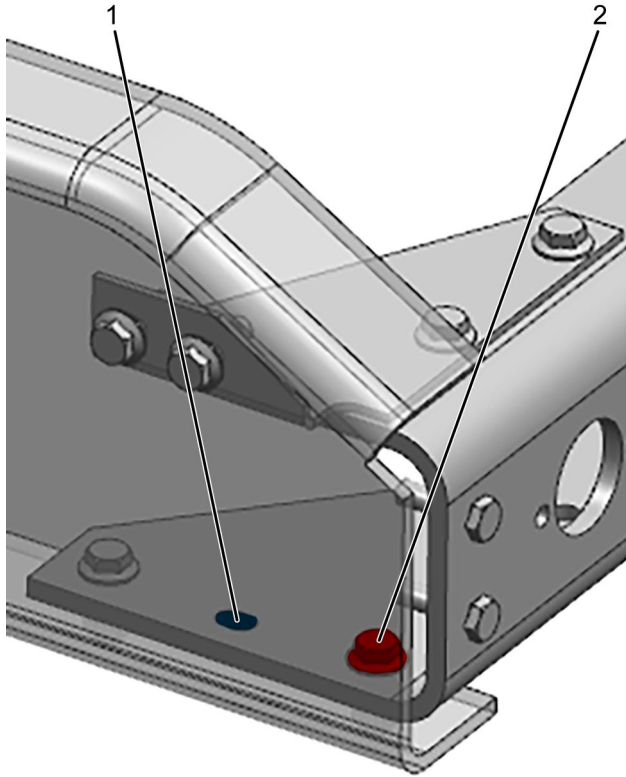
### **Procedure D: Instructions to Install New Truck-Lite Light Assemblies for 6x4 and 6x2 Vehicles Only**

1. Verify vehicle ignition switch and vehicle headlight switch are both in the OFF position.
2. Note and record all clipping points for rear lighting harness at rear chassis harness.
3. If equipped, remove P-clamp securing rear lighting harness in place and save for reuse.
4. Remove any cable tie straps securing lighting harness in place.
5. Disconnect rear lighting harness from rear chassis electrical connector.
6. If vehicle is equipped with a backup alarm mounted to the light assembly, disconnect wire harness from backup alarm. Using mounting bolts, transfer backup alarm to new light assembly, tighten bolts securely and connect harness to pigtail on light assembly.
7. Remove two mounting bolts and nuts securing light assembly to the frame. Save fasteners for reuse.
8. Discard taillight assembly.
9. Using previously removed fasteners, install new taillight assembly to same mounting holes in frame.
10. Using torque wrench and backup wrench, tighten mounting bolts to 65-80 lb-ft (88-108 N·m).
11. Apply dielectric grease to new harness connectors.
12. Connect rear lightning harness connector to chassis electrical connector.
13. Using previously recorded clipping point locations, route new harness and secure with cable tie straps.

14. If equipped, install previously removed P-clamp.
15. Turn ignition to KOER (Key ON Engine RUNNING) position and verify that the taillights, turn signals, and backup light work properly.
16. Remove wheel chocks.

### **Procedure E: Instructions to Install New Grote Light Assemblies for 4x2 Vehicles Only With 0001WRK**

1. Verify vehicle ignition switch and vehicle headlight switch are both in the OFF position.
2. Note and record all clipping points for rear lighting harness at rear chassis harness.
3. If equipped, remove P-clamp securing rear lighting harness in place and save for reuse.
4. Remove any cable tie straps securing lighting harness in place.
5. Disconnect rear lighting harness from rear chassis electrical connector.
6. If vehicle is equipped with a backup alarm mounted to the light assembly, disconnect wire harness from backup alarm. Using mounting bolts, transfer backup alarm to new light assembly, tighten bolts securely and connect harness to pigtail on light assembly.
7. Remove the two mounting bolts and nuts securing light assembly to the frame. Save fasteners for reuse.
8. Discard taillight assembly.



0000484377

**Figure E1. Grote Mounting Location - Rear Crossmember 4X2**

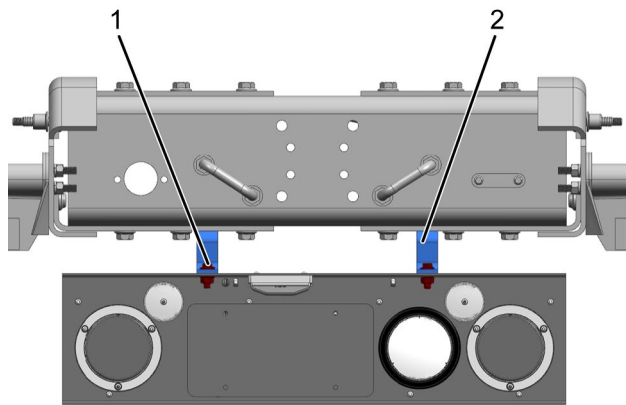
1. Original light location
2. New light location

9. Remove rear bolt (Figure E1, Item 2) on each side at rear crossmember and install in bolt holes where the light assembly was mounted, (Figure E1, Item 1).
10. Using previously removed fasteners, install new taillight assembly to rear mounting holes.
11. Using torque wrench and backup wrench, tighten four bolts to 65-80 lb-ft (88-108 N·m).
12. Apply dielectric grease to new harness connectors.
13. Connect rear lightning harness connector to chassis electrical connector.
14. Using previously recorded clipping point locations, route new harness and secure with cable tie straps.
15. If equipped, install previously removed P-clamp.

16. Turn ignition to KOER (Key ON Engine RUNNING) position and verify that the taillights, turn signals, and backup light work properly.
17. Remove wheel chocks.

**Procedure F: Instructions to Install an Extension Bracket to Lower the Light Assembly and Not Replace the Light Assembly for 4x2 Vehicles Only With 0001WSR**

1. Verify vehicle ignition switch and vehicle headlight switch are both in the OFF position.
2. Note and record all clipping points for rear lighting harness at rear chassis harness.
3. Remove any cable tie straps securing lighting harness in place.
4. Remove two mounting bolts and nuts securing light assembly mounting brackets to crossmember. Save fasteners for reuse.
5. Remove two mounting bolts and nuts securing light assembly to brackets. Save fasteners for reuse. Discard mounting brackets.



0000484378

**Figure F1. Rear Crossmember for 4X2 with 0001WSR**

1. Mounting bracket bolt (2)
2. New mounting bracket (2)

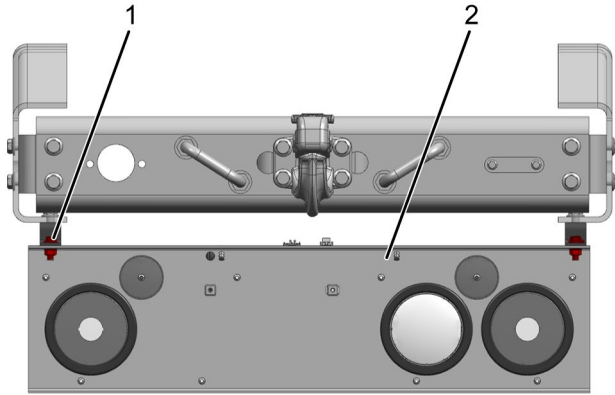
**NOTE: New mounting brackets are installed with the bottom of each bracket facing rearward, allowing the light assembly to be positioned down and rearward of its original position.**

6. Install new taillight mounting brackets (Figure F1, Item 2) to current light assembly using previously removed mounting bolts and nuts (Figure F1, Item 1) and hand tighten.

7. Install previously removed fasteners in Step 4 through crossmember into light assembly mounting brackets.
8. Using torque wrench and backup wrench, tighten two mounting bolts securing brackets to crossmember to 65-80 lb-ft (88-108 Nm).
9. Using torque wrench and backup wrench, tighten two mounting bolts securing mounting bolts to light assembly to 34-42 lb-ft (47-58 Nm).
10. Using previously recorded clipping point locations, route new harness and secure with cable tie straps.
11. If equipped, install previously removed P-clamp and secure with cable tie strap.
12. Turn ignition to KOER (Key ON Engine RUNNING) position and verify that taillights, turn signals, and backup light work properly.
13. Remove wheel chocks.

### **Procedure G: Instructions to Install Extension Bracket to Lower the Light Assembly and New Light Assembly for 6x4 and 6x2 Vehicles Only**

1. Verify vehicle ignition switch and vehicle headlight switch are both in the OFF position.
2. Note and record all clipping points for rear lighting harness at rear chassis harness.
3. If equipped, remove P-clamp securing rear lighting harness in place and save for reuse.
4. Remove any cable tie straps securing lighting harness in place.
5. Disconnect rear lighting harness from rear chassis electrical connector.
6. If vehicle is equipped with a backup alarm mounted to the light assembly, disconnect wire harness from backup alarm. Using mounting bolts, transfer backup alarm to new light assembly, and tighten bolts securely and connect harness to pigtail on light assembly.
7. Remove two mounting bolts and nuts securing light assembly to the frame. Save fasteners for reuse.
8. Discard taillight assembly.



0000484379

**Figure G1. Rear Crossmember for 6X4 and 6X2**

1. New mounting bracket bolt (2)
2. New Grote Light Module

9. Remove bolts at frame for each mounting location and save fasteners for reuse.

**NOTE: New mounting brackets are installed with the bottom of each bracket facing rearward, allowing the light assembly to be positioned down and rearward of its original position.**

10. Install new taillight mounting brackets to new light assembly (Figure G1, Item 2) using new fasteners (Figure G1, Item 1) and hand tighten.
11. Reinstall bolts and nut removed in Step 7 through the frame and through new mounting brackets.
12. Using torque wrench and backup wrench, tighten two mounting bolts securing brackets to crossmember to 65-80 lb-ft (88-108 Nm).
13. Using torque wrench and backup wrench, tighten two mounting bolts securing mounting bolts to light assembly to 34-42 lb-ft (47-58 Nm).
14. Apply dielectric grease to new harness connectors.
15. Connect rear lighting harness connector to chassis electrical connector.
16. Using previously recorded clipping point locations, route new harness and secure with cable tie straps.
17. If equipped, install previously removed P-clamp and secure with cable tie strap.



18. Turn ignition to KOER (Key ON Engine RUNNING) position and verify that the taillights, turn signals, and backup light work properly.
19. Remove wheel chocks.

## END OF SERVICE PROCEDURE

### LABOR INFORMATION

Operation Number	Description	Time
A40-23514-1	Inspection	0.2 hrs.
A40-23514-2	Inspection and Perform Procedure A	0.4 hrs.
A40-23514-3	Inspection and Perform Procedure B	0.5 hrs.
A40-23514-4	Inspection and Perform Procedure C	0.4 hrs.
A40-23514-5	Inspection and Perform Procedure D	0.5 hrs.
A40-23514-6	Inspection and Perform Procedure E	0.5 hrs.
A40-23514-7	Inspection and Perform Procedure F	0.4 hrs.
A40-23514-8	Inspection and Perform Procedure G	0.5 hrs.

**Table 2** Labor Information

### CAMPAIGN IDENTIFICATION LABEL

Each vehicle corrected in accordance with this campaign must be marked with a CTS-1075 Campaign Identification Label.

Complete the label and attach on a clean surface next to the vehicle identification number (VIN) plate.



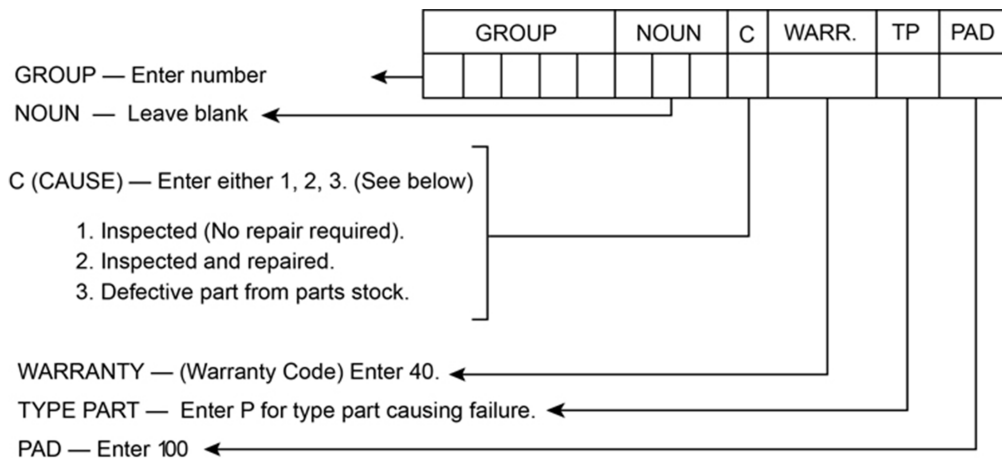
## ADMINISTRATIVE / DEALER RESPONSIBILITIES

### WARRANTY CLAIMS

Warranty claim expense is to be charged to Warranty. Claims are to be submitted in the normal manner, making reference to Noncompliance Recall 23514.

Section 7 of the Warranty Policy and Procedures Manual contains further information related to the submission and processing of AFC / Recall claims.

As with all claim submissions, items acquired locally must be submitted in the "Other Charges" tab. The cost of any bulk items (such as a bag of cable tie straps, roll of wire, barrel of oil, or tube of silicone) should be prorated for the cost of the individual pieces / amount used during each repair.



000047910

### UNITED STATES AND POSSESSIONS

The National Traffic and Motor Vehicle Safety Act, as amended, provides that each vehicle that is subject to a vehicle recall campaign must be adequately repaired within a reasonable time after the owner has tendered it for repair. A failure to adequately repair within 60 days after a tender of a vehicle is prima facie evidence of failure to repair within a reasonable time. If the condition is not adequately repaired within 60 days, the owner may be entitled to replacement with an identical or reasonable equivalent vehicle at no charge, or to a refund of the purchase price less a reasonable allowance for depreciation.

Dealers must correct all vehicles subject to this campaign at no charge to the owner, regardless of mileage, age of vehicle, or ownership, from this time forward.

Dealers should proceed immediately to make necessary correction to units in inventory. Federal law prohibits a dealer from delivering under a sale or lease, a new motor vehicle or any new or used item of motor vehicle equipment (including a tire) covered by the notification of a recall until the defect or noncompliance is remedied.

Dealers must make every effort to promptly schedule an appointment with each owner to repair his or her vehicle as soon as possible. However, consistent with the customer notification, dealers are expected to complete the repairs on the mutually agreed upon service date.

Dealers involved in the recall process will be furnished a listing of owner names and addresses to enable them to follow up with owners and have the vehicles corrected. Use of this listing must be limited to this campaign because the list may contain information obtained from state motor vehicle registration records, and the use of such motor vehicle registration data for purposes other than this campaign is a violation of law in several states.

## **CANADA**

Dealers must correct all vehicles subject to this campaign at no charge to the owner, regardless of mileage, age of vehicle, or ownership, from this time forward.

Dealers should proceed immediately to make necessary correction to units in inventory. All inventory vehicles subject to this recall campaign must be corrected prior to sale, transfer or delivery. If vehicles have been sold or transferred and you are in receipt of Customer Notification Letters and Authorization for Recall Service cards for those vehicles, the transfer location or customer must be notified immediately from your dealer location.

Dealers must make every effort to promptly schedule an appointment with each owner to repair his or her vehicle as soon as possible. However, consistent with the customer notification, dealers are expected to complete the repairs on the mutually agreed upon service date.

Dealers involved in the recall process will be furnished a listing of owner names and addresses to enable them to follow up with owners and have the vehicles corrected. Use of this listing must be limited to this campaign because the list may contain information obtained from state motor vehicle registration records, and the use of such motor vehicle registration data for purposes other than this campaign is a violation of law in several states.

## **EXPORT**

Export Distributors should proceed immediately to make necessary correction to units in inventory. All inventory vehicles subject to this recall campaign must be corrected prior to sale, transfer or delivery. If vehicles have been sold or transferred and you are in receipt of Customer Notification Letters and Authorization for Recall Service cards for those vehicles, the transfer location or customer must be notified immediately from your distributor location.

Export Distributors are to submit warranty claims in the usual manner making reference to this recall number.

Export Distributors are expected to provide full cooperation and follow-up with respect to this important subject matter. If you have any questions or need further assistance, please contact the Regional Service Manager at your regional office.

**NAVISTAR, INC.**