

Wheel-end Check

1. General Safety Instructions:
 - a. Read and observe all Warning and Caution hazard alert messages in this publication. They provide information that can help prevent serious personal injury, damage to components, or both. Failure to follow the instructions and safety precautions in this manual could result in improper servicing or operation leading to component failure which, if not avoided, could result in death or serious injury.
 - b. All installation should be performed by a properly trained technician using proper/special tools, and safe procedures. NOTE: In the United States, workshop safety requirements are defined by federal and/or state Occupational Safety and Health Act (OSHA). Equivalent laws could exist in other countries. This manual is written based on the assumption that OSHA or other applicable employee safety regulations are followed by the location where work is performed.
 - c. Properly support and secure the vehicle and axles from unexpected movement when servicing the unit. Failure to properly support the vehicle and axles prior to commencing work could create a crush hazard which, if not avoided, could result in death or serious injury.
 - d. If possible, unload the trailer before performing any service procedures.

2. Identifying Units Without Proper Grease
 - a. Orientate hub so that the fill port is located at the 12 o'clock position.
 - b. Remove fill plug and insert a clean dip-stick of 8" minimum at an angle until it makes contact with the side of the hub.
 - c. Remove dip stick and check amount of grease. There should be 3.0" minimum on the stick.



- d. If the proper amount is present reinstall fill-plug (20-25 ft-lbs).
- e. Mark the hub at the fill-plug with a green paint mark.
- f. If the proper amount is not present proceed to 3

3. Units without proper grease

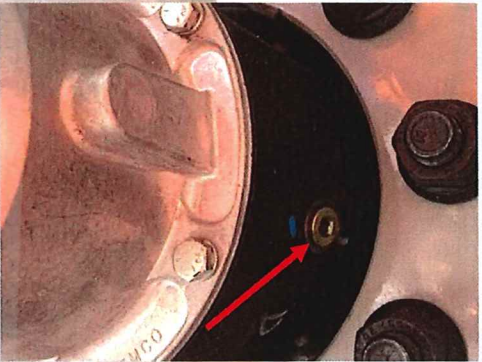
- a. Units Without Proper Grease - 0 Mileage / at OEM 1. Add proper amount of Chevron Delo grease (35 oz) to the hub. 2. Reinstall fill-plug (20-25 ft-lbs).
- b. Units Without Proper Grease - Field/Inservice
 - i. Tear down wheel end, clean and inspect bearing journals, and threads.
 - ii. If spindle is in good condition replace with new wheel end following ConMet installation procedure 10084844.
 - iii. Mark the hub at the fill-plug with a green paint mark.
 - iv. If spindle is deemed not satisfactory replace both axle (refer to section 4) and wheel end.
 - v. Mark the hub at the fill-plug with a green paint mark.





WHAT TO CHECK: Verify the **hub cavity fill** in wheel ends of completed trailers.

HOW TO CHECK: Use the steps below to remove the hub fill plug to visually verify the presence of the correct lubricant in the hub cavity of completed trailers. To do this, you'll need the following: (1) **dipstick** and (1) **5/16" hex bit socket** and torque wrench



Locate the fill plug on the hub surface.

Use the wrench to remove the fill plug.

Note: if the hub plug is not oriented to the top of the hub, you may need a container to collect the lubricant dripping out of the hub hole.



Insert a **CLEAN** dipstick (or appropriate substitute) into the hub hole. The specified lubricant should appear on the stick. *In this example, Chevron Delo was spec'd for this wheel end, and the grease is yellow, which is correct.*

If the dipstick comes out clean, the hubcap should be removed to verify the absence of lubricant.

Replace the hub fill plug and torque to 20-25 ft-lbs.