

November 14, 2022

All targeted transit authority

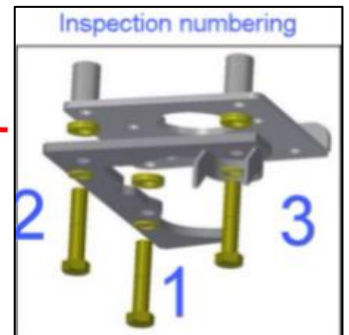
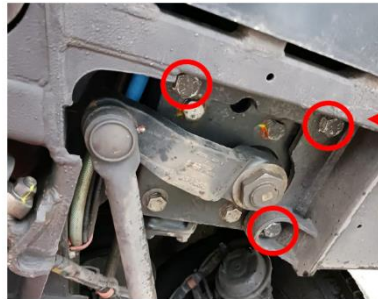
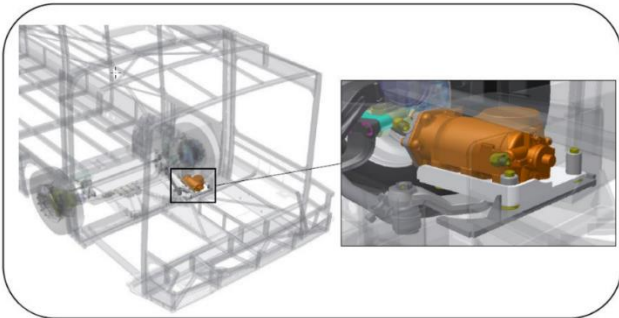
Object: Communication regarding Bosch steering gearbox mounting plate installation bolts

Dear Sir/Madam,

An issue was recently found on some Nova Bus vehicles equipped with a Bosch steering gearbox. The issue concerns the 7/8" bolts (3) that secure the steering gearbox mounting plate assembly to the vehicle frame.

We have identified that you have some vehicles equipped with this configuration. We recommend that an inspection be performed on these specific vehicles to confirm that the suspected bolts are not found loose:

- Visual inspection to confirm the presence of the three (3) bolts;
- Visual inspection to confirm the torque seal marks are not broken on these bolts;
- Torque inspection and retorquing of these bolts to the nominal value of 452 N.m.
- Apply new torque seal marks to the bolts.



If you identify any non-conformity during inspection, we request pictures, location and any other relevant information be communicated to Nova Bus for further analysis. All results should be reported back to your Nova Bus service representative (see pictures above for inspection numbering).

Nova Bus is currently completing its investigation and testing potential corrective actions. Further documentation and instructions will be provided shortly to correct this potential issue.

We apologize for the inconvenience, and thank you for your cooperation as we work through this,


Robert Létourneau
VP Product Development


Dominic Boies
Quality Director