



**PREVOST**

**SAFETY  
RECALL**

**SR22-05**

DATE :	September 2022	SECTION :	06 ELECTRICAL
SUBJECT:	ALTERNATOR BELTS REPLACEMENT		

First Release

INFORMATION REDACTED PURSUANT TO THE FREEDOM OF INFORMATION ACT (FOIA), 5 U.S.C.552(B)(6)

09-26-2022

**APPLICATION**

<b>NOTICE TO SERVICE CENTERS</b>	
<i>Verify vehicle eligibility by checking warranty bulletin status with <b>SAP</b> or via <b>ONLINE WARRANTY SYSTEM</b> available on Service / Warranty tab of PrevoSt website.</i>	
Model	VIN
H3-41, H3-45 Coaches. Model Year: 2010 - 2023	From 2PCH33498 <u>A</u> [REDACTED] up to 2PCH33491 <u>P</u> [REDACTED] incl.
H3-41, H3-45 VIP Motorhomes. Model Year: 2011 - 2022	From 2PCVS3494 <u>B</u> [REDACTED] up to 2PCVS3492 <u>N</u> [REDACTED] incl.
H3-45 Incomplete Vehicle. Model Year: 2018	2PCR33494 <u>J</u> [REDACTED]
X3-45 Coaches. Model Year: 2010 - 2022	From 2PCG33498 <u>A</u> [REDACTED] up to 2PCG33492 <u>N</u> [REDACTED] incl.
X3-45 Commuters. Model Year: 2012 - 2022	From 2PCG33495 <u>C</u> [REDACTED] up to 4RKJ33498 <u>N</u> [REDACTED] incl.
X3-45 VIP Motorhomes. Model Year: 2012 - 2022	From 2PCBS3499 <u>C</u> [REDACTED] up to 2PCBS3497 <u>N</u> [REDACTED] incl.
X3-45 VIP Commercial Use. Model Year: 2014 - 2022	From 2PCCS3497 <u>E</u> [REDACTED] up to 2PCCS3493 <u>N</u> [REDACTED] incl.
X3-45 Incomplete Vehicles. Model Year: 2017 - 2019	From 2PCS33491 <u>H</u> [REDACTED] up to 2PCS33492 <u>K</u> [REDACTED] incl.
XL2-45 Entertainers. Model Year: 2011 - 2013	From 2PCY33498 <u>B</u> [REDACTED] up to 2PCYS3498 <u>D</u> [REDACTED] incl.
<p><b>This Safety Recall does not necessarily apply to all the above-mentioned vehicles, some vehicles may have been modified before delivery. The owners of the vehicles affected by this recall will be advised by a letter indicating the Vehicle Identification Number (VIN) of each vehicle concerned.</b></p>	

## DESCRIPTION

On vehicles affected by this recall, the heavy duty alternator belt (with aramid cord reinforcement) may continue to turn the alternator pulley after an alternator bearing failure. If the pulley continues to turn, it could lead to front bearing overheat.

Therefore, the heavy duty aramid belts must be replaced by polyester belts as needed following the interchange table provided.

Before reinstalling the polyester belts, the alternators front bearing must be inspected for damage and the alternator(s) replaced as needed.

## MATERIAL

Prevost Part Number OLD	Belt Type	Prevost Part Number NEW	Application
506015	BELT, POLY V 10PK1892	505605	MTH hot side
506020	BELT, POLY V 8PK1575	5060129	Bosch HD10 RH curb's side
506026	BELT, POLY V 10PK1695	505606	Bosch HD10 LH driver's side EFD only
506034	BELT, POLY V 10PK1695	505607	Bosch HD10 LH driver's side EFD only
506067	BELT, POLY V 10PK1705	2084632	Remy 55SI LH Driver's side EFD only (OC 2019049)
506070	BELT, POLY V 8PK1587	505608	Bosch HD10 RH curb's side Small AC or before Bitzer
506077	BELT, POLY V 10PK1705	20846320	Remy 55SI LH Driver's side EFD only (OC 2019049)
506080	BELT, POLY V 8PK1575	5060130	Bosch HD10 RH curb's side
506083	BELT, POLY V 8PK1435	505609	Remy 55SI RH Curb's side
506084	BELT, POLY V 10PK1708	506193	Remy 55SI LH Driver's side EFD only (CA)
506114	BELT, POLY V 8PK1524	5060113	Bosch HD10 RH curb's side without idler
506134	BELT, POLY V 8PK1587	5060114	Bosch HD10 RH curb's side Small AC or before Bitzer
506167	BELT, POLY V 8PK1512	5060131	Bosch HD 10 limp home with one alternator
506188	BELT, POLY V 8PK1600	505610	
5060140	BELT, POLY V 8PK1840	505602	
23577315	BELT, POLY V 8PK1410	505611	Volvo 9700



Other parts that may be required:

Part No.	Description	Qty
564119	Bosch HD10 alternator 24V 120 AMP	As req.
560748	Bosch HD10 28V-150AMP alternator	As req.
560720	Remy 55S alternator 24V-250A	As req.

**NOTE**

*Material can be obtained through regular channels.*

**SAFETY PRECAUTIONS**

- Eye protection should always be worn when working in a shop.
- Rules for Personal Protection Equipment should always be respected. Wear your PPE including but not limited to the following:



**Safety First!**



**PROCEDURE**



**DANGER**

Park vehicle safely, apply parking brake, stop the engine. Prior to working on the vehicle, set the ignition switch to the OFF position and trip the main circuit breakers equipped with a trip button. On Commuter type vehicles, set the battery master switch (master cut-out) to the OFF position. Lockout & Tag out (LOTO) must be performed during set-up, maintenance or repair activities. Refer to your local procedure for detailed information regarding the control of hazardous energy.

**NOTE**

**Aramid reinforced cord belt (left) vs new polyester cord belt (right).**



Proceed to the belts replacement and bearings inspection following the instruction in the recall video bellow.

**LINK TO THE VIDEO :** <https://youtu.be/SnZYD2qYkCw>

Resume of the most common installations.

1. On vehicle equipped with a mechanical cooling fan, remove the fan belt.
2. Remove the left hand alternator belt (if so equipped)
3. Remove both AC V-belts (manual tensioner)

- Slack the manual adjustment screw.
  - Remove the tensioner.
  - Remove the belts.
4. Remove the water pump belt.
  5. Remove the right hand alternator(s) belt.
  6. Spin all alternators and make sure no bearing noises are coming from the alternator(s). Replace alternator(s) as needed (Only OEM alternator(s) with noisy bearings are covered by this safety recall; See *OEM Alternator Identification* below).

### NOTE

As a good practice, spin all idlers and tensioners and make sure no bearing noises are heard and replace the bearing(s) as required (idler & tensioner *are not* part of this safety recall unless covered by std vehicle warranty – Std warranty process must be used to claim these parts ).

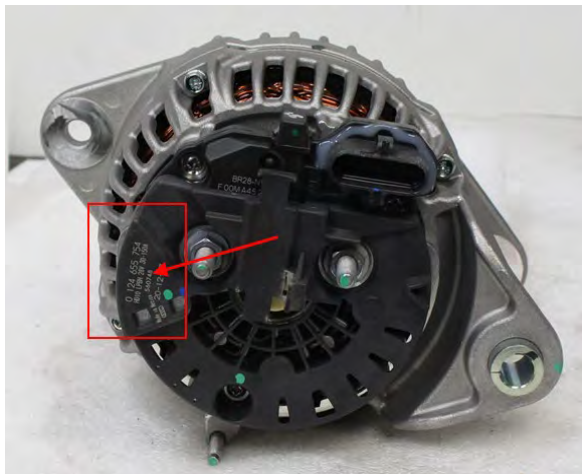
7. Reverse the procedure to reinstall the belts on the vehicle.

### IMPORTANT

The *Limp Home Belt* that is part of the supplied spare part kit must be checked and replaced as needed.

### OEM ALTERNATOR IDENTIFICATION

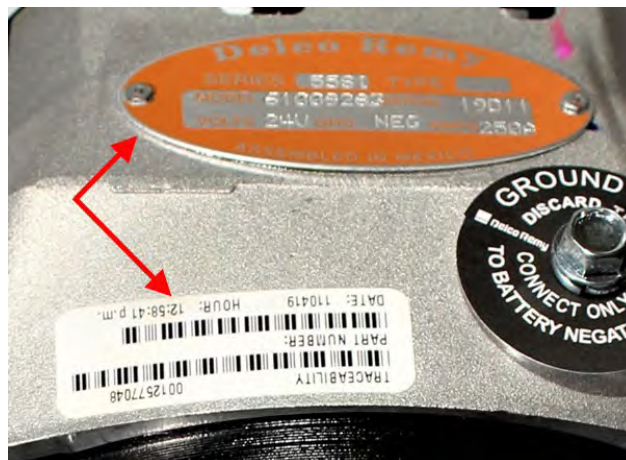
#### BOSCH HD10



- BOSCH HD10 OEM alternator will have a Prevest part number stamped on the back cover (as well as Bosch part numbers).
- These identification marks (numbers) can either be printed in white or stamped/molded in the plastic cover (150amp HD10 with white marking shown).



### REMY 55S



- REMY 55S Alternator will have a Delco-Remy identification plate riveted to the body as well as a bar code sticker next to the ground stud as shown.

### PARTS DISPOSITION

All replaced parts must be returned to Prevest according to the Return Shipping Instructions available on [www.prevestcar.com](http://www.prevestcar.com) (under service / warranty section) for full reimbursement. A copy of the warranty claim form must be enclosed with the shipment.

### WARRANTY

This modification is covered by Prevest's normal warranty. We will reimburse you the belts and 3/4 hour (0.75) of labor for the inspection and belt replacement upon receipt of a completed A.F.A.

**NOTE:** Labor for the inspection and belt replacement of motorhomes will be 1 ¼ hours (1.25).

We will also reimburse you the parts and two hour(s) (2.0) of labor for each defective OEM alternator.

Please submit claim via our Online Warranty System, available at [www.prevestcar.com](http://www.prevestcar.com) (under service \ warranty section). Use Claim Type: "Bulletin/Recall" and select "Safety Recall SR22-05".

Should you only wish to close the safety recall (without reimbursement), fill-in the "Safety Recall Certification Sheet" provided with this bulletin and return it to our warranty department by Email at [prevost.warranty@volvo.com](mailto:prevost.warranty@volvo.com).

### OTHER

VBC Bulletin	N/A
Fail Code	06.01
Defect Code	09
Syst.Cond	R
Causal Part	506020

Access all our Service Bulletins on <http://techpub.prevestcar.com/en/> or scan the QR-Code with your smart phone.  
E-mail us at [technicalpublications\\_prev@volvo.com](mailto:technicalpublications_prev@volvo.com) and type "ADD" in the subject to receive our warranty bulletins by e-mail.



