

Newmar Corporation

PO Box 30
Nappanee, IN 46550



WHEN YOU KNOW THE DIFFERENCE.

RSB 590
November 01, 2022

NHTSA #22V 748
TC #2022-569

RECALL SERVICE BULLETIN

AFFECTED MODELS

2023 :: Dutch Star

DESCRIPTION

The dash interferes with full extension of the brake pedal assembly.

ISSUE

Newmar Corporation has decided that a defect, which relates to motor vehicle safety, exists in specific motorhomes built on Freightliner and Spartan Chassis.

On certain Newmar motorhomes, when the adjustable brake pedal is fully extended towards the driver, it may contact the dash panel. This can cause the brakes to partially be applied. Continuing to drive with the brakes partially applied may cause the brakes to overheat and cause a brake failure.

UNITS AFFECTED

Please refer to the attached population list for affected units and VINs.

CORRECTIVE ACTION

Follow the attached work instructions to trim the plastic dash panel.

PARTS NEEDED

Item Description	Quantity	Newmar Part #
SEAL FOAM SCRNR DR	1 ft.	03650

FLAT RATE CODE: 22V 748

LABOR TIME: .5 hr.

DEALER ACTION

Contact your Newmar Service Account Manager to obtain authorization and order part(s).

CUSTOMER ACTION

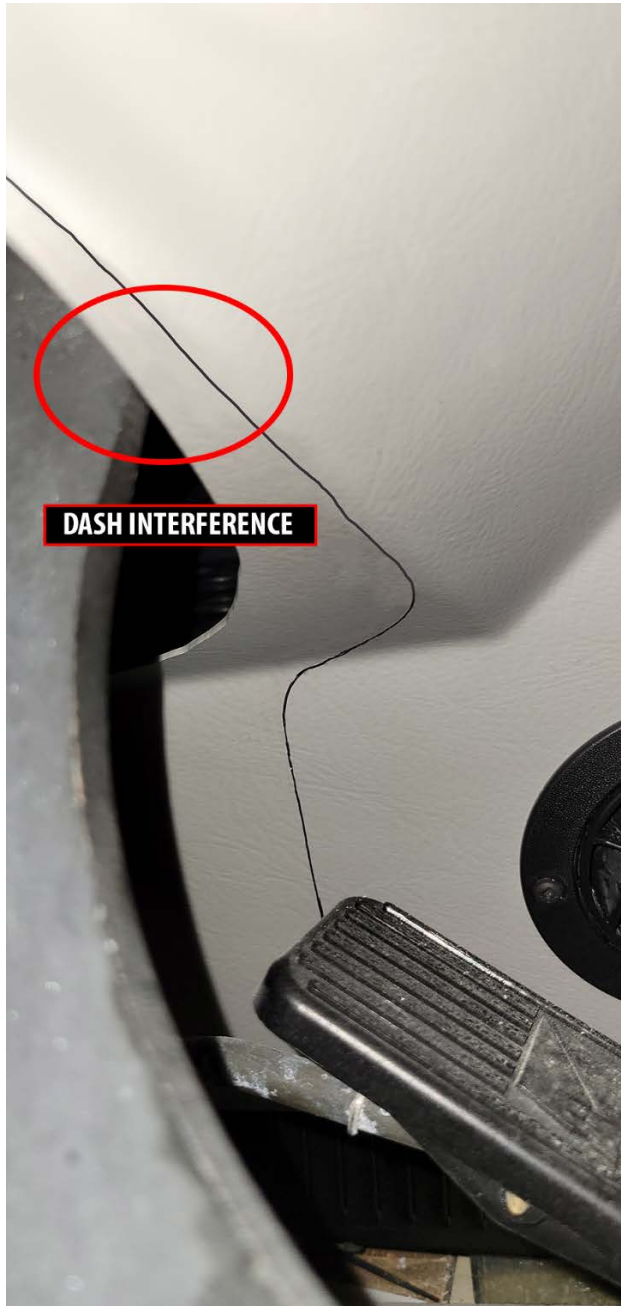
Contact the Newmar brand specialist immediately at 1-800-731-8300. An associate will assist you in making an appointment to have this repair completed.

IMPORTANT: Please read this bulletin in its entirety prior to beginning any diagnosis or repairs.

NOTICE: Any technical information published in this bulletin is intended for use only by a qualified, Newmar-authorized service technician. Newmar is not responsible for the misuse of this information.

Work Instructions for Bulletin 590 :: Brake Pedal/Dash Clearance Issue

1. Measure and mark the dash cut, or print the attached template, and cut out the upper and lower template for a pattern to mark the dash cut.

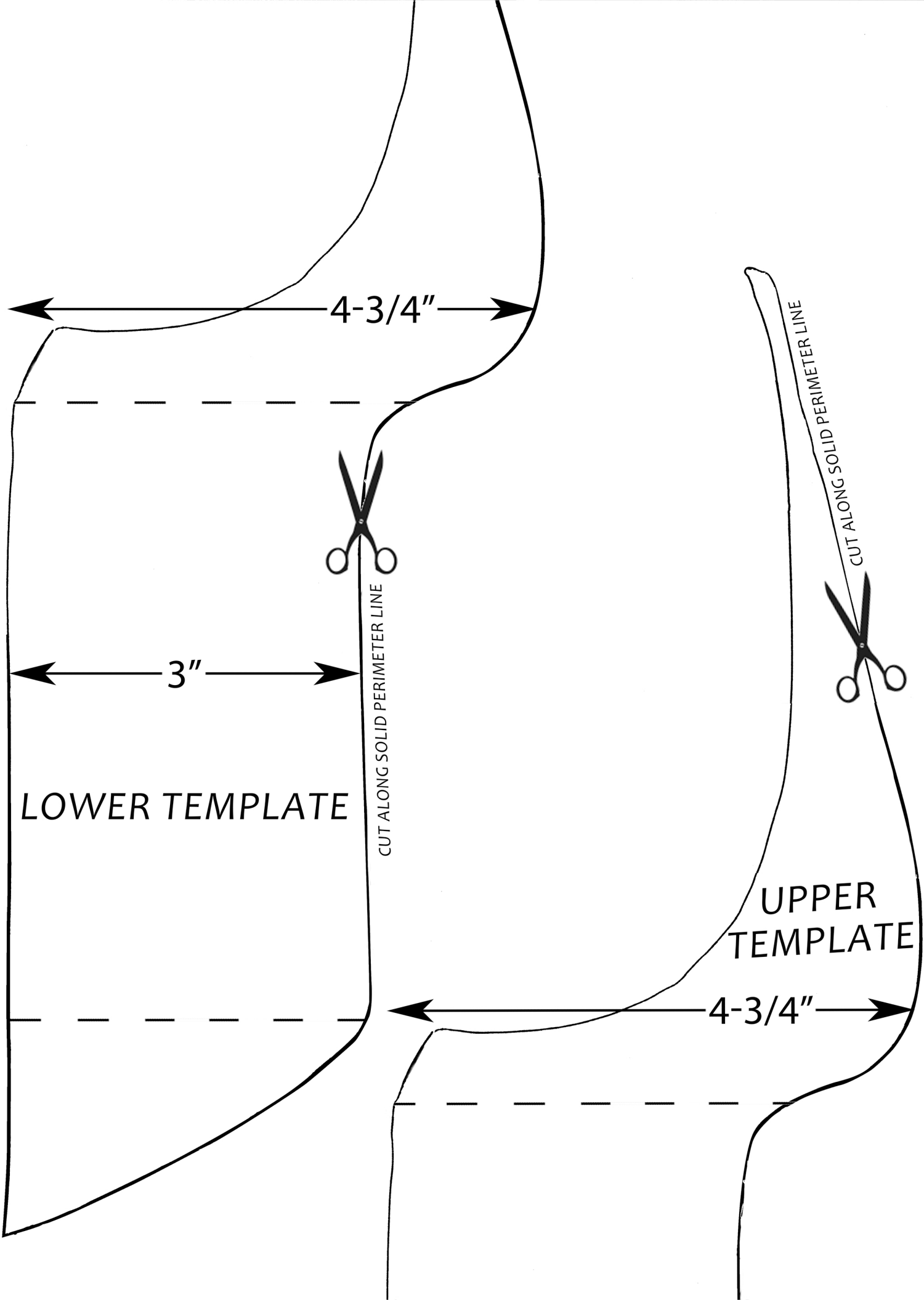


2. Using an air saw or a similar cutting device, cut slowly along the marks made in the previous step, making sure no wires are in the path of the blade. If you try to cut too fast, you may melt the plastic back together.

3. After cutting, use 80 grit sandpaper to de-bur the cut plastic on the dash, and discard the plastic piece that was removed.



4. Add a piece of foam tape to the back side of the dash in line with the brake pedal arm. This will eliminate dash rattling if the pedal arm is still close while driving with the pedal assembly fully extended.



4-3/4"

3"

LOWER TEMPLATE

CUT ALONG SOLID PERIMETER LINE

CUT ALONG SOLID PERIMETER LINE

UPPER
TEMPLATE

4-3/4"