



## Air Intake Box Drain Line(s)

<b>Bulletin Type:</b>	Recall	<b>Publication Date:</b>	September 2022
<b>Bulletin #(s):</b>	22V-665 US 2022-494 Canada	<b>Make(s):</b>	Jayco & Entegra Coach
<b>Job Code(s):</b>	9903580	<b>Model(s):</b>	Embark, Reatta, Reatta XL, Aspire, Anthem, Cornerstone
<b>Flat Rate(s):</b>	9903580A - .10 Inspection 9903580B - .35 Inspection and Installation Embark/Reatta/Reatta XL 9903580C - .70 Inspection and installation Aspire/Anthem/Cornerstone	<b>Model Year(s):</b>	2021-2023

<b>Incident:</b>	<b>Air intake Box drain lines(s) not installed which may allow water to get into the engine</b>
<b>Affected Units:</b>	<b>2021-2023 Jayco Embark; 2021-2023 Entegra Coach Reatta, Reatta XL, Embark, Aspire, Anthem, Cornerstone</b>
<b>Parts Kit Details:</b>	<b>Parts Kit #: 22V-665A - Reatta/Reatta XL/Embark:</b> 1 - GROMMET,PLSTC 1.00X2.75 BLK (Jayco Part #0163538) 6 ft - TUBING,1.00 CLR VNL (Jayco Part #0207442) 1 - CLAMP,HOSE WMGR .50 TO *EE 1.25 SST (Jayco Part #0205905) 1 - DRAIN,CNDS RBR DUCKBILL 1.36DIA HOLE (Jayco Part #0299289) 1 - CLAMP,VNL COAT STL LOOP 1.25 (Jayco Part #0201112) 5 - SCREW,PAN QUAD 8.00X0.75 TEK BLK (Jayco Part #0214553) SEALANT,MS-101 BLK (Jayco Part #0084060) TAPE,ELEC .75 UT 602 1700 (Jayco Part #0010351)
	<b>Parts Kit #: 22V-665B - Aspire/Anthem/Cornerstone</b> 2 - GROMMET,PLSTC 1.00X2.75 BLK (Jayco Part #0163538) 12 ft - TUBING,1.00 CLR VNL (Jayco Part #0207442) - <u>Cut to 6 ft length</u> 2 - CLAMP,HOSE WMGR .50 TO *EE 1.25 SST (Jayco Part #0205905) 2 - DRAIN,CNDS RBR DUCKBILL 1.36DIA HOLE (Jayco Part #0299289) 2 - CLAMP,VNL COAT STL LOOP 1.25 (Jayco Part #0201112) 10 - SCREW,PAN QUAD 8.00X0.75 TEK BLK (Jayco Part #0214553) SEALANT,MS-101 BLK (Jayco Part #0084060) TAPE,ELEC .75 UT 602 1700 (Jayco Part #0010351)
<b>Misc. Tools &amp; Supplies:</b>	Screwgun with Square Bit 5/16 Socket
<b>Parts Return Information:</b>	N/A

## AIR INTAKE BOX DRAIN LINE(S) INSPECTION

### 1. Embark/Reatta/Reatta XL:

- Visually inspect under driver side rear cap. If a clear rubber hose with a duckbill drain is installed, no repair is required. File for inspection only. Follow the instructions below if the clear rubber hose with a duckbill drain has not been installed.

Air Intake Box Drain



### 2. Aspire/Anthem/Cornerstone:

- With the rear louvered engine door raised, visually inspect inside both the driver side and passenger side rear cap. If a clear rubber hose with a duckbill drain is installed on both sides, no repair is required. File for inspection only. Follow the instructions below if the clear rubber hose with a duckbill drain has not been installed.



Air Intake Box Drains

## AIR INTAKE BOX DRAIN LINE(S) INSTALLATION INSTRUCTIONS

- Reatta/Reatta XL/Embark will require an installation of a drain line on the driver rear air intake box only.
- Aspire/Anthem/Cornerstone will require drain lines to be installed on both the driver and passenger rear air intake box.

- Instruction to install (1) Air Intake Drain Hose. If both sides are needed, Repeat installation for the second side.

- Drill a 1-inch hole in the bottom of the air box.
- Be sure to retrieve/move fiberglass cutout and debris before installing drain line.
- Secure drain line to grommet with worm gear clamp.
- Secure to the bottom of the air box where 1 inch hole was previously drilled with 4 fasteners. (Figure 1)

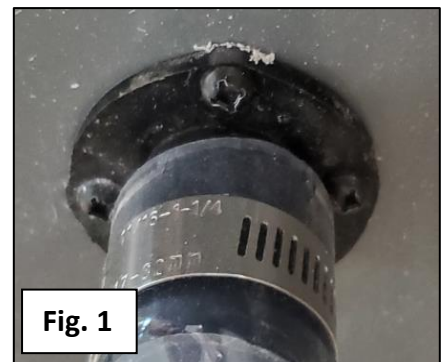
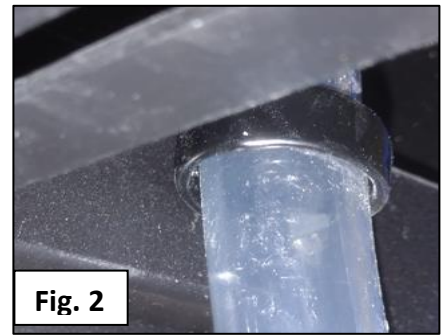


Fig. 1

5. Route the drain line to the bottom of rear cap.(figure 2)
6. Secure the bottom of the drain line with a vinyl coated clamp.
7. Cut the hose to length (near the bottom of the cap for easy accessibility to inspect for maintenance. (Figure 3)



8. Apply sealant to clear hose and install the rubber duckbill drain to the clear hose. (Figure 3)
9. Wrap duckbill to hose with electrical tape to allow sealant to cure. (Figure 4)



*Jayco's sole obligation under our limited warranty is to repair or replace defective materials and/or workmanship deemed our responsibility as determined by Jayco in our sole discretion. Jayco reserves the right to use new and/or remanufactured parts or materials of similar quality to complete any work, and to make parts and/or design changes as appropriate without notice to anyone. Jayco designs and/or materials changes are done without obligation to incorporate such changes in previously manufactured product. Jayco makes every reasonable effort to ensure field remedies will not adversely affect performance and/or safety of the unit. This field remedy is not intended to extend to future performance of this RV, or any of its materials, components or parts beyond the standard warranty period. The RV owner's obligation to notify Jayco, or one of its independent, authorized dealers, of a claimed defect does not modify any obligation placed on the RV owner to contact Jayco directly when attempting to pursue remedies under state or federal law. Jan. 2019.*

903 South Main Street • P.O. Box 460 • Middlebury, IN 46540