



# VOLUNTARY RECALL CAMPAIGN

Classification: FE22-004	Reference: NTB22-077	Date: August 31, 2022
-----------------------------	-------------------------	--------------------------

## VOLUNTARY SAFETY & EMISSIONS RECALL CAMPAIGN 2022 ROGUE; FUEL TANK INSPECTION

**CAMPAIGN ID #:** PC912  
**APPLIED VEHICLES:** 2022 Rogue (T33)

**Check Service COMM or Dealer Business Systems (DBS)  
National Service History to confirm campaign eligibility.**

### INTRODUCTION

Nissan is conducting this voluntary safety and emissions recall campaign on certain specific model year 2022 Rogue vehicles to inspect and, if necessary, replace the fuel tank. This service will be performed at no charge to the customer for parts or labor.

### IDENTIFICATION NUMBER

Nissan has assigned identification number PC912 to this campaign. This number must appear on all communication and documentation of any nature dealing with this campaign.

### DEALER RESPONSIBILITY

It is the dealer's responsibility to check Service COMM or Dealer Business Systems (DBS) National Service History for the campaign status on each vehicle falling within the range of this voluntary safety and emissions recall which for any reason enters the service department. This includes vehicles purchased from private parties or presented by transient (tourist) owners and vehicles in a dealer's inventory. **Federal law requires that new vehicles in dealer inventory which are the subject of a safety recall must be corrected prior to sale. Failure to do so can result in civil penalties by the National Highway Traffic Safety Administration.** While federal law applies only to new vehicles, Nissan strongly encourages dealers to correct any used vehicles in their inventory before they are retailed.

Bulletins are intended for use by qualified technicians, not 'do-it-yourselfers'. Qualified technicians are properly trained individuals who have the equipment, tools, safety instruction, and know-how to do a job properly and safely. **NOTE:** If you believe that a described condition may apply to a particular vehicle, DO NOT assume that it does. See your Nissan dealer to determine if this applies to your vehicle.

# IMPORTANT

## Attention California Dealers

An Emission Recall Campaign Completion (ERCC) label must be filled out by the technician performing the repair, and then attached to the underside of the vehicle hood. A sample of the label is shown below.

Technician: Fill in the following:  
"Checked/Replaced Fuel Tank per Campaign ID # PC912"

Fill in "DEALER CODE" and "DATE"  
Put "ARB/EPA" under "CHANGE AUTHORITY"

**NISSAN MOTOR CORPORATION**  
**AUTHORIZED MODIFICATIONS**

THE FOLLOWING MODIFICATIONS HAVE BEEN MADE:

---

THESE MODIFICATIONS HAVE BEEN APPROVED  
AS APPROPRIATE BY EPA AND CARB

DEALER CODE: \_\_\_\_\_ DATE: \_\_\_\_\_  
CHANGE AUTHORITY: \_\_\_\_\_ NIS-UHL-16

Figure 1

California law prohibits owners from renewing their California registration if emissions related recall work has not been performed. California dealers are now required to issue a proof of correction certificate to vehicle owners upon completion of emissions related recall work. Please fill out one of the campaign completion forms for each owner that has this campaign performed. Instruct owners to keep this certificate unless they are requested to mail it to the DMV. A sample of the form is shown in Figure 2 below.

**Vehicle Emission Recall - Proof of Correction**

License Number	Make	Model Year	Body Type	Vehicle Identification Number □□□□□□□□□□□□□□□□□□□□
----------------	------	------------	-----------	---

Manufacturer \_\_\_\_\_ Recall Number \_\_\_\_\_

The above described vehicle has been repaired, modified and/or equipped with new emission control devices to meet applicable California Emission Control Laws.

Dealer's Name	Address, City, State, Zip
Date	Dealership's Authorized Signature <b>X</b>

Return this certificate to DMV only when required - otherwise retain for your records.

CAEMRC 1-20

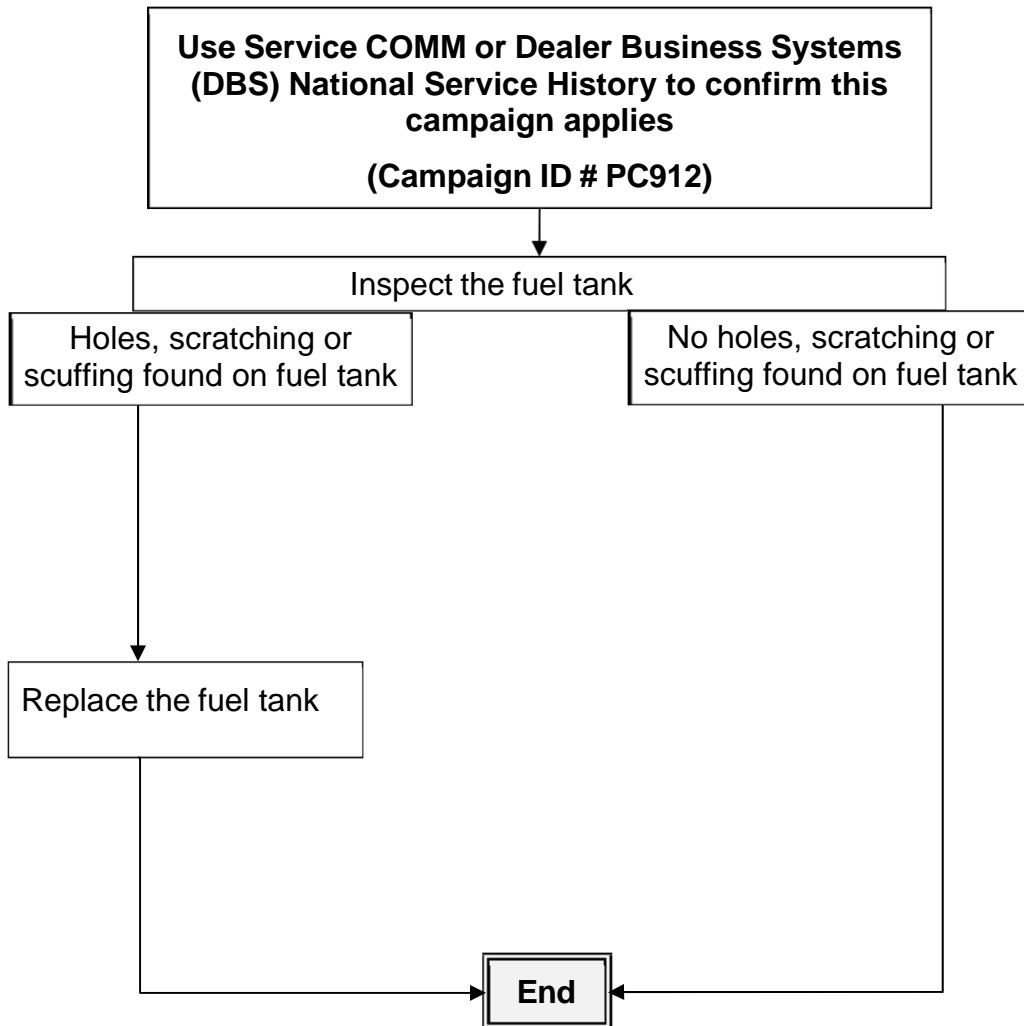
Orange colored

Figure 2

**NOTE:**

- These forms (item number **CAEMRC 1-20**) and labels (item number **NIS-UHL-16**) are available from Nissan Publications (1-800-247-5321) at no charge.
- When either item (form or label) is ordered, you will automatically receive the other item as well.

## REPAIR OVERVIEW



## SERVICE PROCEDURE

### **⚠ WARNING**

To avoid the risk of death or severe personal injury when inspecting and replacing fuel line parts, be sure to observe the following:

- Put a “WARNING: FLAMMABLE” sign in the work area.
- Be sure to work in a well-ventilated area and furnish the work area with a CO2 fire extinguisher.
- Never smoke while servicing the fuel system.
- Keep open flames, sparks and other ignition sources away from the work area.
- Never bend or twist tubes when they are being installed.
- After installing tubes, check that there is no fuel leakage at connections in the following steps.
  1. Apply pressure to fuel lines by turning the ignition switch to ON (with engine stopped). Then check for fuel leakage at connections.
  2. Start the engine, increase RPM and check for fuel leakage at connections.

### **⚠ CAUTION**

To avoid the risk of minor personal injury or property damage when inspecting and replacing fuel line parts, be sure to observe the following:

- Perform the operation with the vehicle on level ground.
- Disconnect the quick connector when the tabs are completely depressed.

## Fuel Tank Inspection

1. Place the vehicle on a suitable lift and raise it up.



Figure 3

2. Locate the front left corner of the fuel tank.

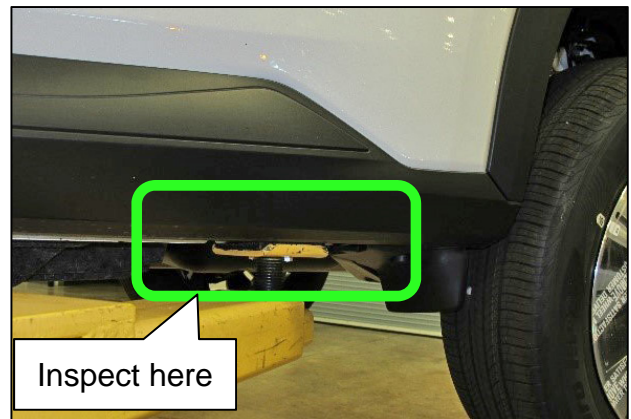


Figure 4

- Look under the vehicle, just ahead of the left rear wheel/tire assembly.

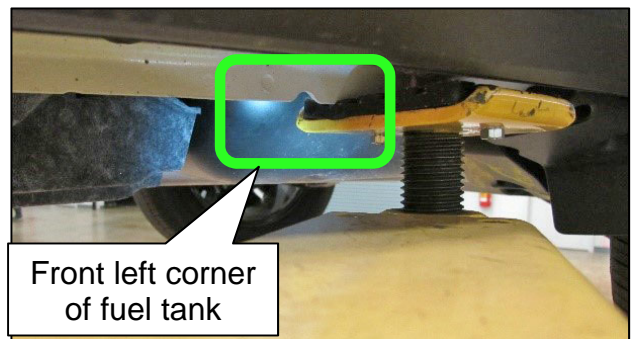


Figure 5

- Using a light source, find the area to be inspected on the top left front corner of the fuel tank.

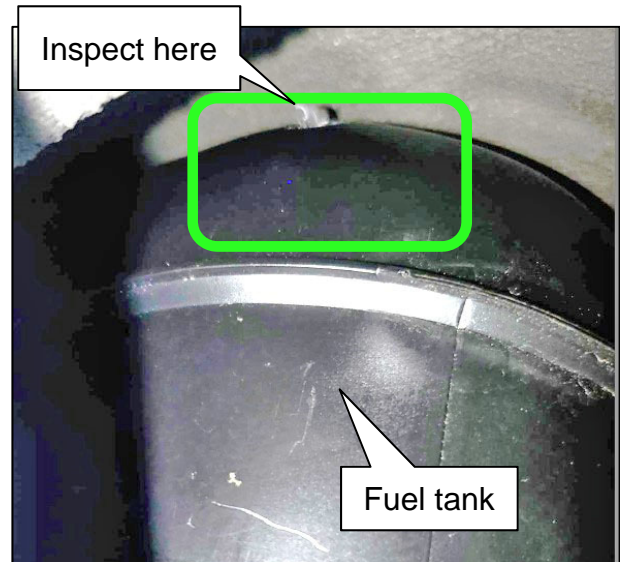


Figure 6

- Inspect the top left front corner of the fuel tank for a hole or any drill bit scratches/scuffing (Figure 7 and Figure 8).

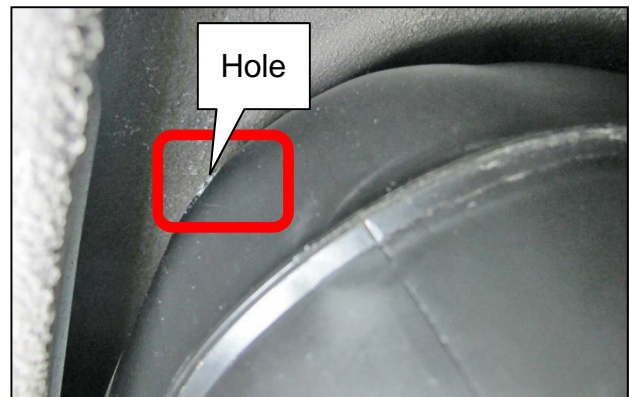


Figure 7

- Use your hand to feel for scratching and/or scuffing on the fuel tank.
- The fuel tank should be smooth to the touch in the inspection area.



Figure 8

5. Did the fuel tank inspection in step 4 on page 6 reveal a hole or any scratching/scuffing on the top left front corner of the fuel tank?
  - **GOOD - NO HOLES OR SCRATCHING/SCUFFING**
    - No repair is needed. Lower the vehicle and remove it from the lift. Refer to **CLAIMS INFORMATION** to submit a claim for Op Code PC9120.
  - **NO GOOD - HOLES OR SCRATCHING/SCUFFING FOUND**
    - Continue to step 6 to replace the fuel tank.

## Partition Removal

6. Open both rear doors and the back door.



Figure 9

7. If present, remove the cardboard box labeled “STOWED ITEMS” (Figure 10).

**IMPORTANT:** Do not open the cardboard box, it has a tamper proof seal.

- Secure the cardboard box in a safe place, it will be placed back in the vehicle.



Figure 10

8. Remove the support arm to partition mount bolts/washers and nuts from both sides (Figure 11 and Figure 12).

- The bolt and nut size is standard ½ inch.
- The nut on the backside will need to be held with a wrench while the bolt is removed.

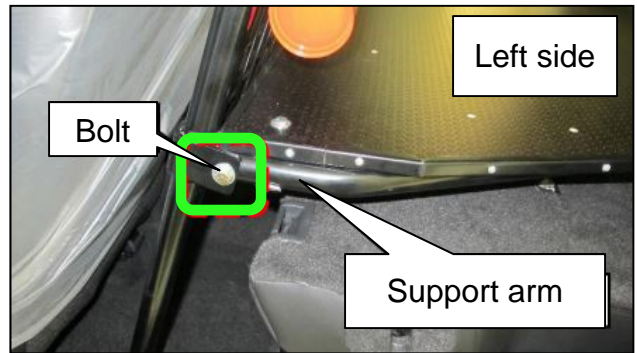


Figure 11

- Place the bolts/washers and nuts in a secure place, they will be reused later.

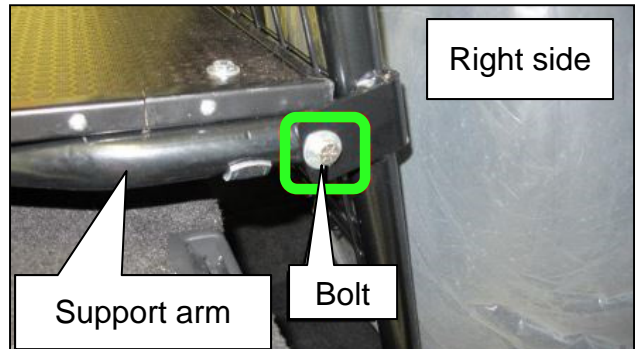


Figure 12

9. Move to the rear of the vehicle and remove the luggage board.

- Lift the rear of the luggage board up, and pull out toward the rear of the vehicle to remove it.
- Place the luggage board in a clean and secure area.

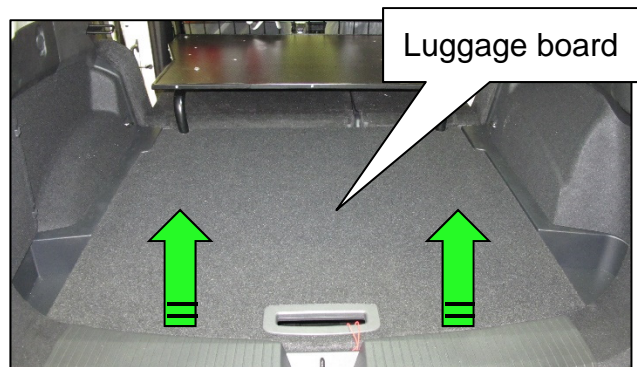


Figure 13



10. Remove the four (4) partition rear support mounting bolts.
  - The bolts are 13 mm.
  - Place the bolts in a secure place, they will be reused later.

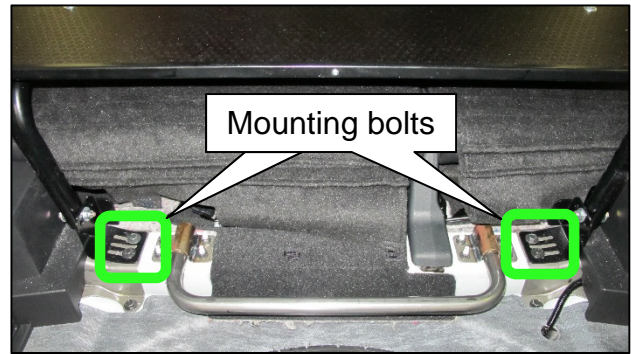


Figure 14

11. Carefully remove the partition platform from the vehicle.
  - From the rear back door opening, remove the partition platform from the vehicle.
  - Be careful to not scratch interior components during removal.
  - Place the partition platform in a clean and secure area.

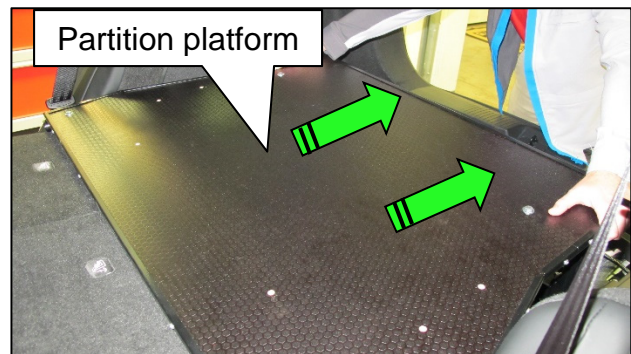


Figure 15

12. Move both second row seat backs to the full upright position.



Figure 16

## Fuel Tank Replacement

### **WARNING**

To avoid the risk of death or severe personal injury when performing fuel system repairs, follow all ESM Warnings and Cautions.

13. Replace the fuel tank.

- Refer to the ESM: **ENGINE > FUEL SYSTEM > KR15DDT > REMOVAL AND INSTALLATION > FUEL TANK > Removal and Installation**
  - Refer to the ESM for all fastener torque specifications

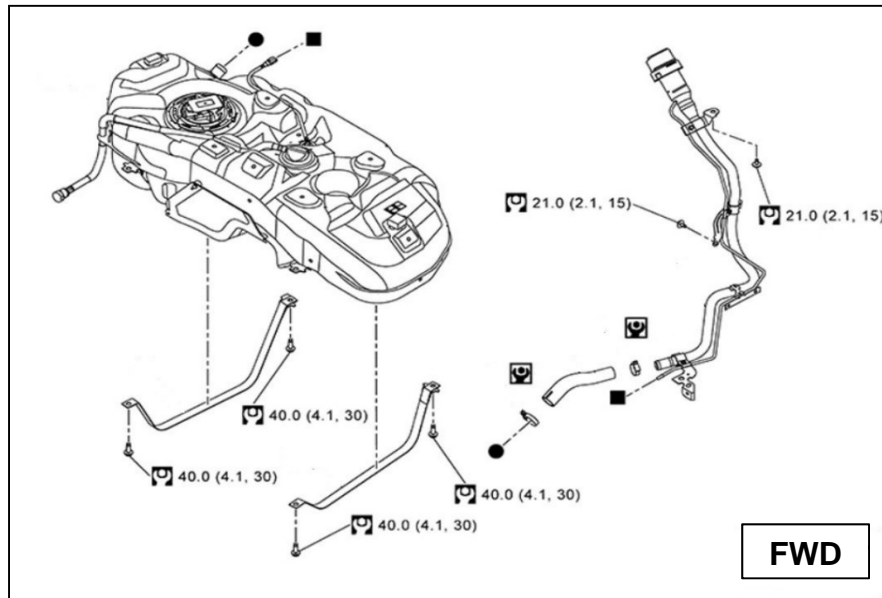


Figure 17

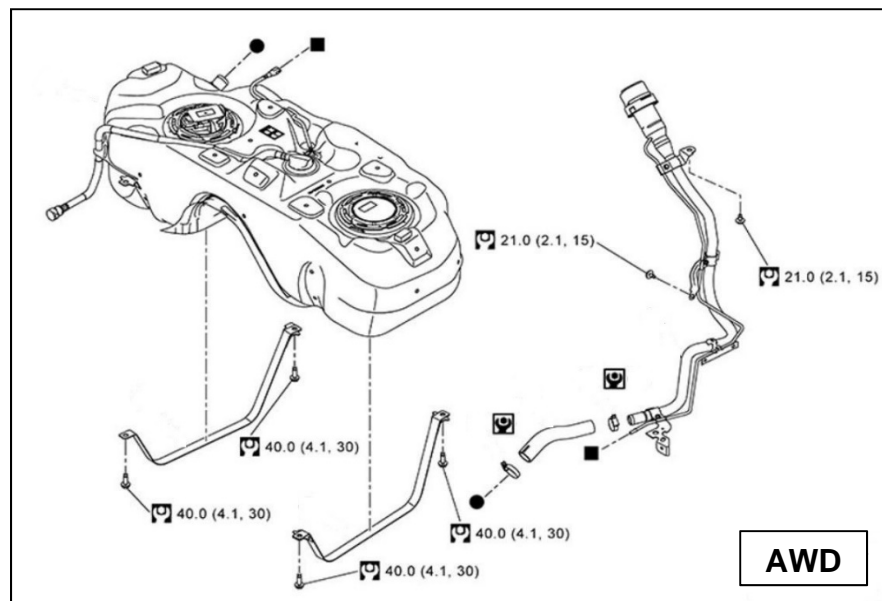


Figure 18

## Partition Installation

14. Fold both second row seat backs to the fully down position.



Figure 19

15. Carefully reinstall the partition platform into the vehicle.
  - From the rear back door opening, install the partition platform into the vehicle.
  - Be careful to not scratch interior components during installation.

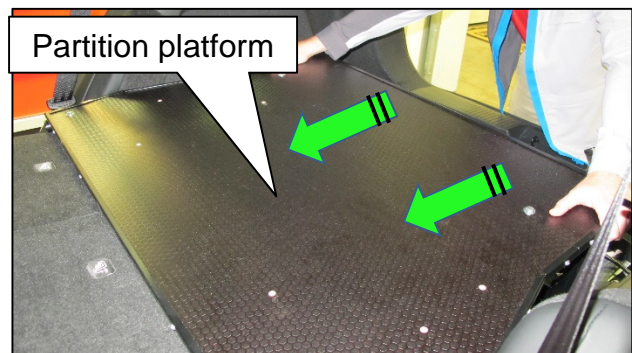


Figure 20

16. Install the support arm to partition mount bolts/washers and nuts on both sides (Figure 21 and Figure 22).
  - The bolt and nut size is standard ½ inch.
  - The nut on the backside will need to be held with a wrench while the bolt is tightened.
  - Bolt torque 39 N•m (4.0 kg-m, **29 ft-lb**)

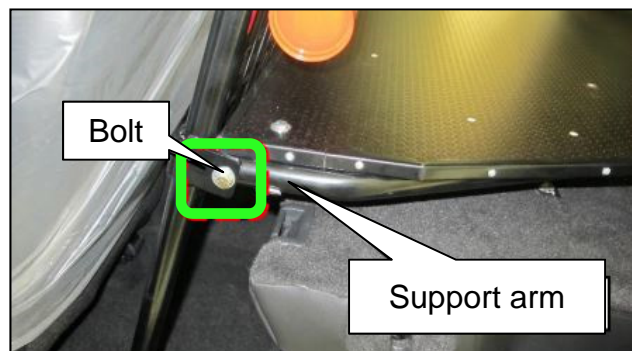


Figure 21

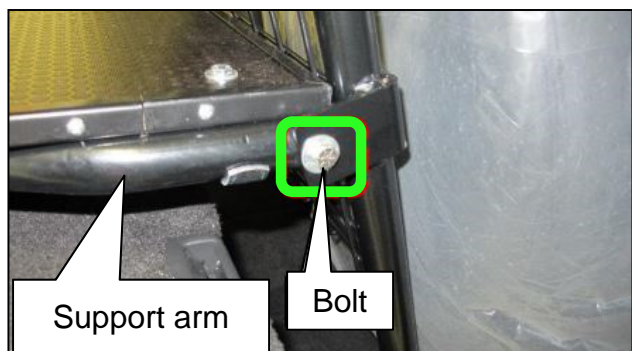


Figure 22

17. Install the four (4) partition rear support mounting bolts.
- The bolts are 13 mm.
  - Bolt torque 21 N•m (2.0 kg-m, **16 ft-lb**)

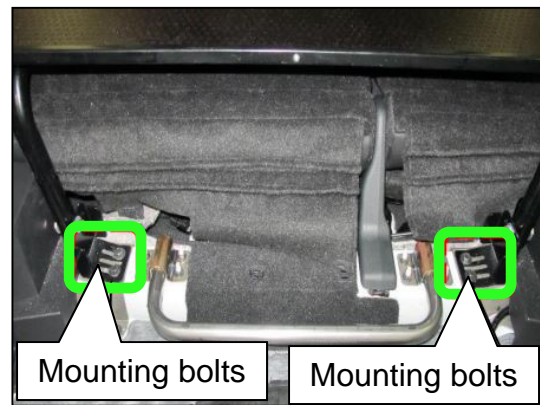


Figure 23

18. Install the luggage board.
- Slide the luggage board into the vehicle from the back door opening.
  - Slide the side hooks into the floor trim on each side.

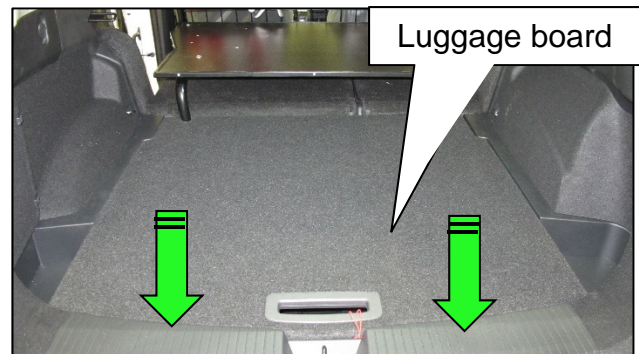


Figure 24

19. If applicable, place the cardboard box labeled "STOWED ITEMS" into the rear cargo area.

**IMPORTANT:** Do not open the cardboard box, it has a tamper proof seal.



Figure 25

20. Close both rear doors and the back door.
21. Remove the vehicle from the lift.



Figure 26

## PARTS INFORMATION

DESCRIPTION	MODEL	PART NUMBER	QUANTITY
TANK ASSY - FUEL	FWD	17202-6RR0A	1
	AWD	17202-6RR1A	1
PACKING - FUEL GAUGE	FWD	17342-6RR0A	1
	AWD		2
PLATE - LOCK, FUEL GAUGE	FWD	17343-6RE0B	1
	AWD	17343-6RR0A	2
GASKET - EXHAUST	FWD and AWD	20692-8H30A	1
BOLT (Propeller Shaft to Transfer Case)	AWD	37120-JD00B	3
BOLT - FIX PROPELLER SHAFT (Propeller Shaft to Final Drive)	AWD	37120-JD01A	4
NUT - FIX PROPELLER SHAFT (Propeller Shaft to Final Drive)	AWD	37171-7S00A	4
NUT (Propeller Shaft Carrier Bearing)	AWD	01223-A0121	2

## CLAIMS INFORMATION

Submit a "CM" line claim using the following claims coding:

CAMPAIGN ("CM") ID	DESCRIPTION	OP CODE	FRT
PC912	Inspect Fuel Tank (OK Condition)	PC9120	0.2
	Inspect Fuel Tank, Remove/Install Partition Parts and Replace Fuel Tank (FWD)	PC9121	2.2
	Inspect Fuel Tank, Remove/Install Partition Parts and Replace Fuel Tank (AWD)	PC9122	3.1

## AMENDMENT HISTORY

PUBLISHED DATE	REFERENCE	DESCRIPTION
August 31, 2022	NTB22-077	Original bulletin published