



Vehicle Safety Recall - Technical Service Bulletin

PROMPT ACTION REQUIRED

Attention: McNeilus Product Owner
Subject: Bridgemaster Fender Tube for mounting Bridgemaster tag axle fenders
Models Affected: Bridgemaster Rear Discharge Mixer (93)
Model Years: 2021-2022
Date: July 2022

Purpose:

McNeilus has identified some vehicles were manufactured with the incorrect size fender tube for mounting the Bridgemaster tag axle fenders.

Affected Vehicles:

The affected vehicle population is McNeilus Bridgemaster Rear Discharge Mixers, produced between May 1, 2021 and January 31, 2022. **Perform the procedure to and make a warranty claim against only the vehicles on this VIN list.**

Time Completion:

Upon receipt of the parts, complete the enclosed procedure for each affected unit. The time of accomplishment may vary due to a number of factors; however, the estimated time for completion of the procedure is 3 hours under normal circumstances.

Required Action:

Review and verify your ownership of all affected serial numbers of McNeilus vehicles. If McNeilus records indicate that you are the owner of one or more affected units, a Serial Number List is enclosed. **Please be reminded that it is a violation of Federal law for you to sell or lease the vehicles covered by this notification until this recall has been performed on these vehicles. Substantial civil penalties apply to violations of this law.**

Reimbursement of Costs:

Affected units shall be repaired using the customer's own qualified service technicians - at no cost to the owner. The repairs should take approximately 3 hours.

Labor Reimbursement:

In order to receive credit, claims are to be submitted through the normal warranty claim system. Claims must be received within 30 days of the repair. Claims must include the McNeilus serial number of the vehicle, the customer asset number, and the number of this bulletin.

Labor reimbursement rate is \$50/hr.

Parts Reimbursement:

Parts and ground shipping will be reimbursed to the customer. Parts necessary for this repair must be ordered from McNeilus Parts at 888-686-7278.

Claims are to be submitted through the normal warranty claim system. Claims must be received within 30 days of the repair. Claims must include the McNeilus serial number of the vehicle, the customer asset number, and this bulletin's number.

Contacts:

If you have questions or need further information, please contact a McNeilus National Service Representative at 888-686-7278.

Enclosures:

Fender tube installation procedure

VIN List of Affected Vehicles (review this list and perform this procedure only on the vehicles in this list)

PROCEDURE:

Tools and Equipment Required (Customer to supply own):

- Wrenches (including 9/16” wrench and 3/8” Allen key)
- Torque wrench up to 250 ft.-lbs.
- Vice or table jig

Parts Required (Order from McNeilus):

Item	Part Number	Description	Qty.
1	1486202	TUBE,315 BM FENDER MT,LH,WLDT	1
2	1486203	TUBE,315 BM FENDER MT,RH,WLDT	1
3	1540466	BRKT,BMV FENDER MT,RH,WLDT	1
4	1540475	BRKT,BMV FENDER MT,LH,WLDT	1
5	1244626	SCR, FLT, SOC .62-11X4.50 835 BO (tube to bracket)	4
6	110311A	NUT, FLG, LKSP .62-11 G8 PO (tube to bracket and assembly to axle)	8
7	1164991	SCR, FLG, HEX .62-11X4.00 G8 ZY (assembly to axle)	4
8	1136593	SCR, CAP, HEX .38-16X1.25 G8 ZY (fender to tube)	8
9	0120200	NUT, FLG, LKDT .38-16 GG CW (fender to tube)	8
10	0200700	WASH, FLT .38X1.50X.07 ZC (fender to tube)	8
11	1146308	SELF-TAPPING SCREWS	2

Parts image and descriptions (Figure 1)

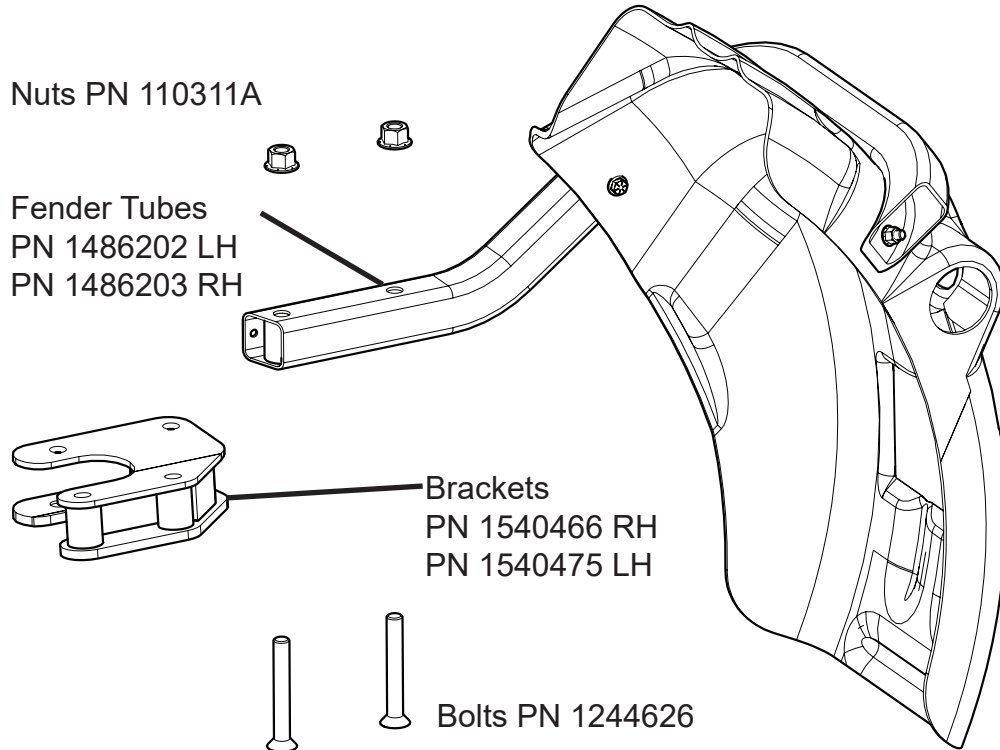


Figure 1

1. Perform your company's Lockout/Tagout procedure. If your company does not have a Lockout/Tagout procedure, follow OSHA 1910.147 and 1910.146 Confined Space as appropriate. Place the vehicle on a flat surface and block tires. Lower Bridgemaster axle fully to the ground with Bridgemaster pressure at its lowest setting by turning the PRV valve counterclockwise as far as possible.
2. Disconnect the electrical harness in the Bridgemaster tag axle fenders.
3. Remove the current fender tubes and fenders, mounting plates, brackets.
4. Remove and retain the following items from the current fender tubes and fenders for reuse in the installation procedures:
 - Fenders with the reflectors and pop rivets, lights, rubber grommets
 - 1/4" bolts with flat washers and locking nuts
5. Install the plastic fender onto the new tube using new bolts (PN 1136593 quantity 4), washers (PN 0200700 quantity 4), and nuts (PN 0120200 quantity 4) (Figure 2).

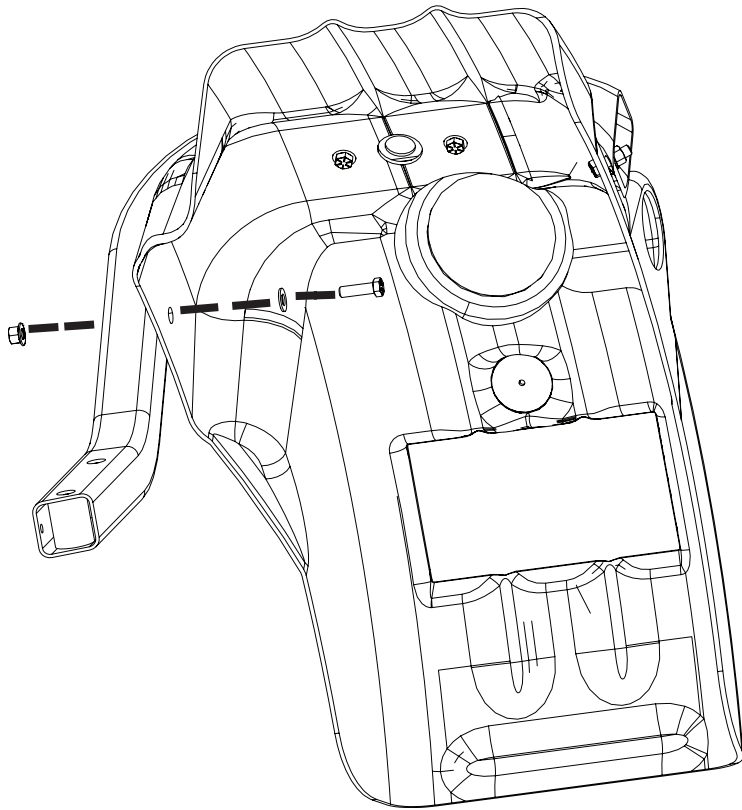


Figure 2

6. Temporarily clamp the new bracket (PN 1540466 for right hand or PN 1540475 for left hand) onto a table jig or vice (Figure 3).



Figure 3

7. Use new bolts (PN 1244626, quantity 2) and nuts (PN 110311A, quantity 2) to secure the fender tube/ fender assembly onto the new bracket (Figure 4).
8. Use a torque wrench to torque to 210 ft.-lbs.

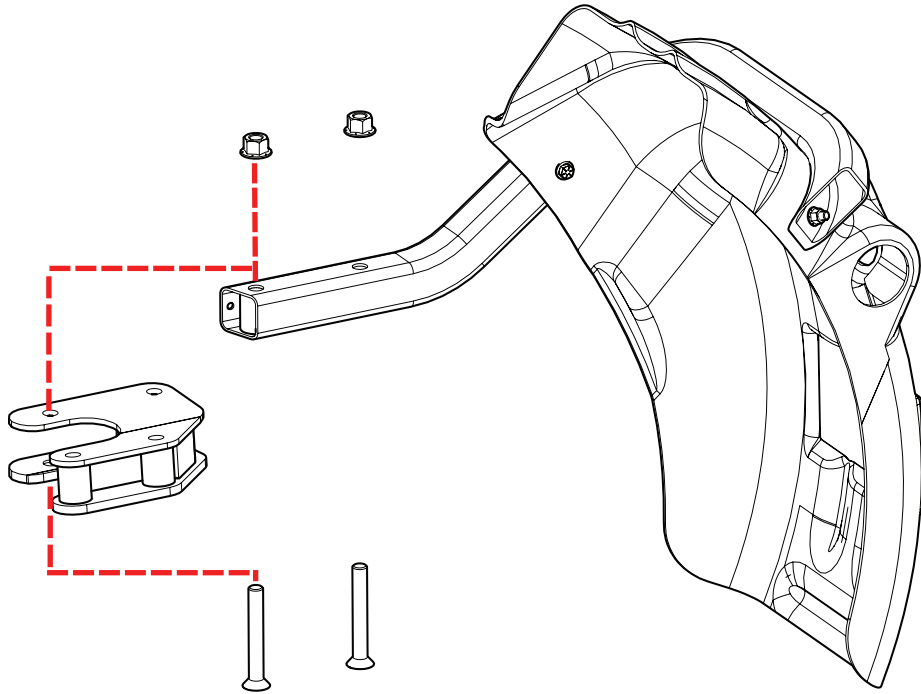


Figure 4

9. Fasten wire using one 1/4" self-tapping screw (PN 1146308) and one 1/4" bolt with flat washer and locking nut (Figure 5). **NOTE:** Install the 1/4" bolt, washer, nut with the nut facing toward the inside (center) of the truck.

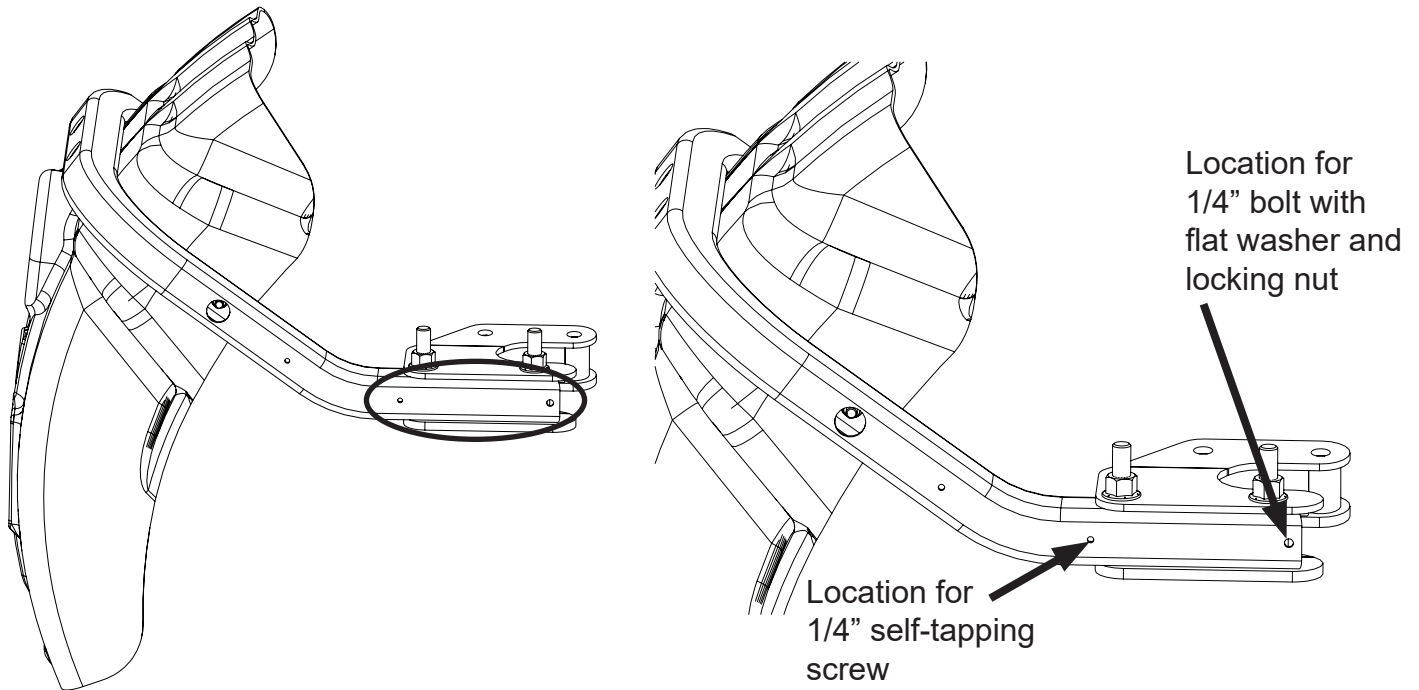


Figure 5

10. Unclamp the entire assembly from the table jig.
11. Install the assembly to the axle (Figure 6) using bolts (PN 1164991, quantity 2) and nuts (PN 110311A, quantity 2).
12. Using a torque wrench, torque the bolts to 250 ft.-lbs. Ensure there is zero contact between the air can and the fender bracket.

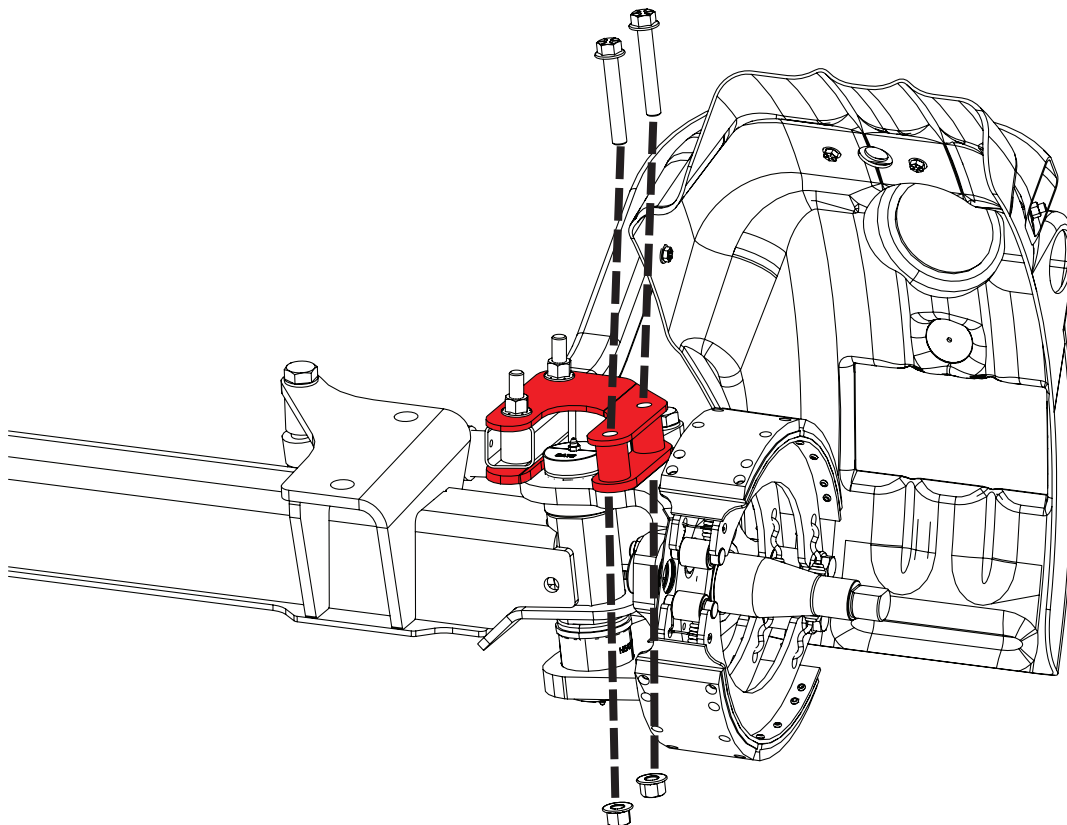


Figure 6

13. After routing the harness through the new fender tube, reconnect the harness to the lights.
14. Repeat Steps 1 through 13 to the other side.
15. Remove your company's Lockout/Tagout procedure. If your company does not have a Lockout/Tagout procedure, follow OSHA 1910.147 and 1910.146 Confined Space as appropriate.
16. Procedure is complete. Return truck to service.

Continuous Improvement:

The change included in this document is part of the McNeilus Continuous Improvement Process.

McNeilus's quality policy is providing customer satisfaction through innovative products, dedicated service, and a constant focus on continuous improvement.



(888) 686-7278

www.streetsmartparts.com