



SAFETY RECALL BULLETIN

SUBJECT:			NO.: SR-22-002
SEAT BELT AUTOMATIC LOCKING RETRACTOR (ALR) – SAFETY RECALL CAMPAIGN			DATE: June 2022
			MODEL: 2022 Outlander
CIRCULATE TO:	<input checked="" type="checkbox"/> GENERAL MANAGER	<input checked="" type="checkbox"/> PARTS MANAGER	<input checked="" type="checkbox"/> TECHNICIAN
<input checked="" type="checkbox"/> SERVICE ADVISOR	<input checked="" type="checkbox"/> SERVICE MANAGER	<input checked="" type="checkbox"/> WARRANTY PROCESSOR	<input checked="" type="checkbox"/> SALES MANAGER

PURPOSE

This Campaign Bulletin provides instructions for the inspection of Lot ID numbers and production dates found on the passenger front and two outboard (left and right) 2nd row seat belts. If the Lot ID number matches (refer to page 4), seat belt(s) replacement is required. Old parts should be properly disposed of.

BACKGROUND

The Automatic Locking Retractor (ALR) function of the subject seat belt assemblies may deactivate before the webbing is fully retracted due to out of specification bearing plate located in the ALR. This condition, if it exists, does not comply with Federal Motor Vehicle Safety Standard (FMVSS) 208. If the ALR function deactivates while an affected seat belt is used to secure a child restraint seat, the child restraint seat may not be tightly secured, which increases risk of serious injury or death.

AFFECTED VEHICLES

Certain 2022 Outlander vehicles

PLEASE NOTE: Safety Recall Campaign **SR-21-007REV3** has similarities with this Safety Recall Campaign. The two recalls are different, affected vehicles were produced at different times, affected seat belt lot numbers are different, and **caution** should be used to prevent confusion.

IMPORTANT

Affected new or used inventory vehicles must be repaired before the vehicle is sold/delivered. Dealers must check their inventory vehicles' VINs on the Warranty Superscreen to verify whether the vehicle is involved in this recall campaign. It is a violation of Federal law for a dealer to sell/deliver a new motor vehicle or any new or used item of motor vehicle equipment (including a tire) covered by the notification under a sale or lease until the defect or noncompliance is remedied.

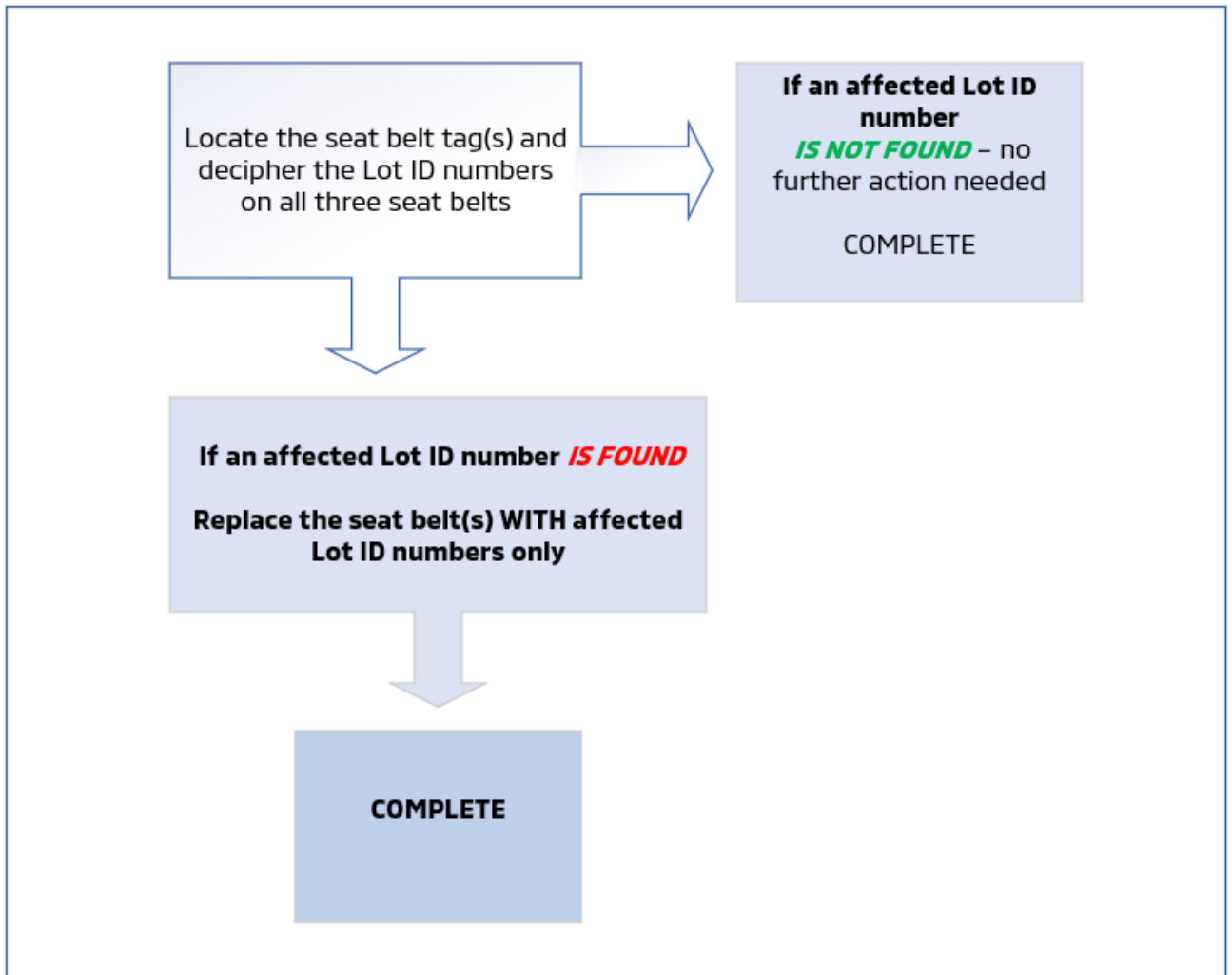
CUSTOMER NOTIFICATION

A letter will be sent to all owners of all potentially affected vehicles telling them to contact their local Authorized Mitsubishi Motors dealer for an inspection of the affected seat belts and replacement if necessary.

Copyright 2022, Mitsubishi Motors North America, Inc.

The information contained in this bulletin is subject to change. For the latest version of this document, go to the Mitsubishi Dealer Link, MEDIC, or the Mitsubishi Service Information website (www.mitsubishitechinfo.com).

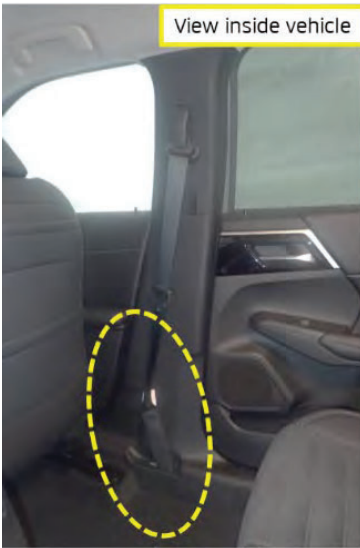
WORK FLOW



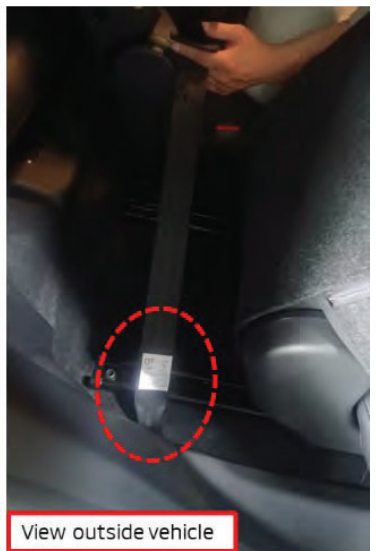
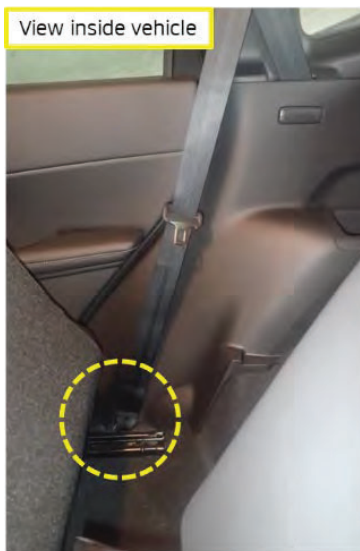
INSPECTION PROCEDURE

1. Locate the seat belt tag as shown in image A and B below.

A. SEAT BELT TAG PASSENGER SIDE FRONT

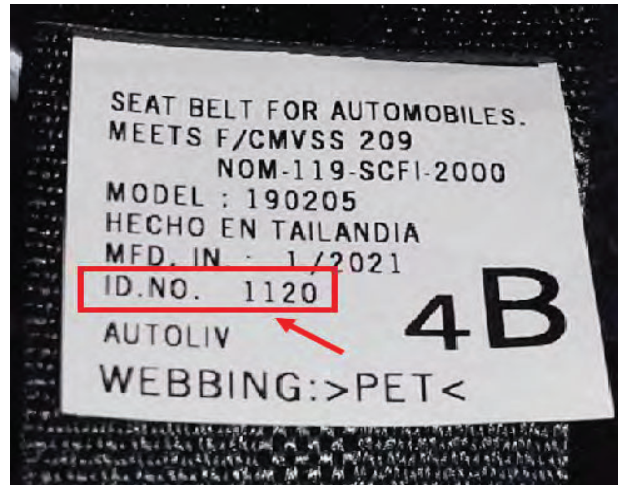


B. SEAT BELT TAG 2ND ROW – LEFT AND RIGHT



INSPECTION PROCEDURE (Continued)

2. Decipher the Lot ID. No. found on the seat belt tag(s) and refer to the chart below.



Sample : OK Tag

- **How to decipher the Lot ID. NO.:** ID. NO. = YMDD (4 digits)
Y (Year): 0 : 2020, 1 : 2021, 2 : 2022
M (Month): 1 – 9 = Jan – Sep, X,Y,Z = Oct, Nov, Dec
DD (Date): 1 – 31 = 1st – 31th

!! IMPORTANT !!

Listing of Affected Lot ID Numbers:

Part Number	Part Name	Lot ID Number
86884W161P	S/BELT ASSY, OTR RH (FR)	1Z13-1Z17
88845W131P	S/BELT ASSY, OTR LH (RR)	1Z11-1Z17
88844W121P	S/BELT ASSY, OTR RH (RR)	1Z12-1Z17



Please follow the steps outlined in the Service Manual (on MDL or MEDIC) for seat belt replacement, if necessary.

MDL: service > service tech resources > Service Related Items > Service & Owner's Publications > 2022 Model Year Outlander > Service Manual Data > Volume 1 > Interior Supplemental Restraint System Group 52 > Seat Belt > P.52B-22

MEDIC: TIR Menu > Model Year 2022 > Model Outlander > Model Outlander DG (2022-) > Service Manual > Seat Belt > Removal and Installation > Front Seat Belt **OR** Rear Seat Belt



When using the 2022 Service Manual, be sure to refer to Volume 1 first. There are duplicate sections in the service information of Volume 1 and in Volumes 2-5. As for the duplicate sections of the service information, refer to only the service information in Volume 1.



Be sure to check precautions and notes by referring to PRECAUTIONS for SEAT BELT and Removal and Installation of FRONT SEAT BELT and REAR SEAT BELT before work.

PRECAUTION PRECAUTIONS

Precaution for Supplemental Restraint System (SRS) "AIR BAG" and "SEAT BELT PRE-TENSIONER"

The Supplemental Restraint System such as "AIR BAG" and "SEAT BELT PRE-TENSIONER", used along with a front seat belt, helps to reduce the risk or severity of injury to the driver and front passenger for certain types of collision.

Information necessary to service the system safely is included in the "SRS AIR BAG" and "SEAT BELT" of this Service Manual.

WARNING:

Always observe the following items for preventing accidental activation.

- *To avoid rendering the SRS inoperative, which could increase the risk of personal injury or death in the event of a collision that would result in air bag inflation, it is recommended that all maintenance and repair be performed by an authorized Mitsubishi Motors dealer.*
- *Improper repair, including incorrect removal and installation of the SRS, can lead to personal injury caused by unintentional activation of the system. For removal of Spiral Cable and Air Bag Module, see "SRS AIR BAG".*
- *Never use electrical test equipment on any circuit related to the SRS unless instructed to in this Service Manual. SRS wiring harnesses can be identified by yellow and/or orange harnesses or harness connectors.*

PRECAUTIONS WHEN USING POWER TOOLS (AIR OR ELECTRIC) AND HAMMERS

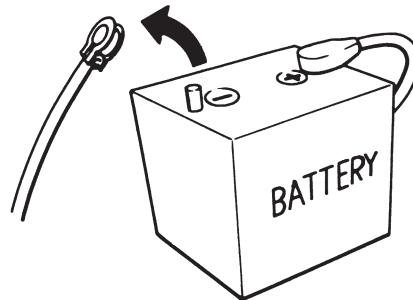
WARNING:

Always observe the following items for preventing accidental activation.

- *When working near the Air Bag Diagnosis Sensor Unit or other Air Bag System sensors with the ignition/power switch ON or engine running, never use air or electric power tools or strike near the sensor(s) with a hammer. Heavy vibration could activate the sensor(s) and deploy the air bag(s), possibly causing serious injury.*
- *When using air or electric power tools or hammers, always switch the ignition/power switch OFF, disconnect the 12V battery or batteries, and wait at least 3 minutes before performing any service.*

Precautions for Removing Battery Terminal

- With the adoption of Auto ACC function, ACC power is automatically supplied by operating the Keyless operation key or remote keyless entry or by opening/closing the driver side door. In addition, ACC power is supplied even after the ignition switch is turned to the OFF position, i.e. ACC power is supplied for a certain fixed time.
- When disconnecting the 12V battery terminal, turn off the ACC power before disconnecting the 12V battery terminal, observing "How to disconnect 12V battery terminal" described below.



CF1009KEAA00USA

NOTE:

Some ECUs operate for a certain fixed time even after ignition switch is turned OFF and ignition power supply is stopped. If the battery terminal is disconnected before ECU stops, accidental DTC detection or ECU data damage may occur.

- For vehicles with the 2-batteries, be sure to connect the main battery and the sub battery before turning ON the ignition switch.

NOTE:

If the ignition switch is turned ON with any one of the terminals of main battery and sub battery disconnected, then DTC may be detected.

- After installing the 12V battery, always check "Self Diagnosis Result" of all ECUs and erase DTC.

NOTE:

The removal of 12V battery may cause a DTC detection error.

<CK`HC`8`G7`CBB97`H`%&J`6`5`HH9`FMH9`FA`-B5`@

Disconnect 12V battery terminal according to instruction described below.

1. Open the hood.
2. Turn ignition switch to the ON position.
3. Turn ignition switch to the OFF position with the driver side door opened.
4. Get out of the vehicle and close the driver side door.
5. Wait at least 3 minutes.

75I HCB:

K \ J`Y`k`U`h`b`[`z`b`Y`j`Y`f`c`d`Y`f`U`H`R`Y`j`Y`l`J`W`Y`g`i`W`U`g`c`W`j`b`[`z`c`d`Y`b`j`b`[`z`U`b`X`W`c`g`j`b`[`X`c`c`f`g`"J`j`c`U`h`c`b`c`Z`H`j`g`W`U`i`h`c`b`f`Y`g`i`h`g`j`b`h`Y`U`W`j`U`h`c`b`c`Z`5`7`7`d`c`k`Y`f`g`i`d`d`m`U`W`f`X`j`b`[`h`c`h`Y`5`i`h`c`5`7`7`Z`b`W`j`c`b`"

6. Remove 12V battery terminal.

75I HCB:

5`Z`h`f`j`b`g`h`U`j`b`[`%&J`V`U`H`f`n`z`U`k`U`h`g`W`Y`W`g`Y`Z`X`j`U`b`c`g`j`f`Y`g`i`h`g`c`Z`U`9`7`I`g`U`b`X`Y`f`U`g`Y`8`H`7`"

Df`Y`W`U`i`h`c`b`Z`c`f`G`Y`U`i`6`Y`h`i`G`Y`f`j`j`W`

75I HCB:

- 6`Y`Z`f`Y`f`Y`a`c`j`j`b`[`h`Y`g`Y`U`h`V`Y`h`U`g`g`Y`a`V`n`z`h`f`b`h`Y`j`[`b`j`h`c`b`g`k`j`H`W`C`::`Z`X`j`g`W`c`b`b`Y`W`h`h`Y`V`U`H`f`m`b`Y`[`U`h`j`Y`h`f`a`j`b`U`U`b`X`k`U`j`h`U`h`Y`U`g`h`'`a`j`b`i`h`g`"
- B`Y`j`Y`f`i`g`Y`Y`W`f`j`W`U`h`g`h`Y`e`i`j`d`a`Y`b`h`z`f`g`Y`U`h`V`Y`h`V`c`b`b`Y`W`c`f`g`"
- 5`Z`h`f`f`Y`d`U`W`j`b`[`c`f`f`Y`j`b`g`h`U`j`b`[`g`Y`U`h`V`Y`h`U`g`g`Y`a`V`n`z`c`f`f`Y`W`c`b`b`Y`W`j`b`[`g`Y`U`h`V`Y`h`V`c`b`b`Y`W`c`f`g`z`W`Y`W`h`Y`g`n`g`h`Y`a`Z`b`W`j`c`b`"F`Y`Z`f`h`c`A`I`H`!`=`G`9`::`i`b`W`j`c`b`[DIAGNOSIS SYSTEM \(AIR BAG DIAGNOSIS SENSOR UNIT\)](#)"
- B`Y`j`Y`f`i`g`Y`X`j`g`U`g`g`Y`a`V`Y`X`V`i`W`Y`c`f`g`Y`U`h`V`Y`h`U`g`g`Y`a`V`m`f`
- F`Y`d`U`W`U`b`W`c`f`V`c`h`g`j`Z`h`Y`m`i`U`F`Y`X`Y`Z`f`a`Y`X`c`f`k`c`f`b`c`i`h`
- B`Y`j`Y`f`c`j`h`c`b`[`i`Y`U`b`X`V`i`W`Y`"
- z`U`b`m`i`V`c`a`d`c`b`Y`b`h`c`Z`g`Y`U`h`V`Y`h`U`g`g`Y`a`V`m`j`g`e`i`Y`g`h`c`b`U`V`Y`z`b`Y`j`Y`f`f`Y`d`U`j`f`"F`Y`d`U`W`h`Y`Y`b`h`f`Y`g`Y`U`h`V`Y`h`U`g`g`Y`a`V`m`f`
- z`k`Y`V`V`j`b`[`j`g`W`h`z`Z`U`m`Y`X`c`f`X`U`a`U`Y`X`z`f`Y`d`U`W`g`Y`U`h`V`Y`h`U`g`g`Y`a`V`m`f`
- K`l`Y`b`f`Y`d`U`W`j`b`[`g`Y`U`h`V`Y`h`U`g`g`Y`a`V`n`z`i`g`Y`U`A`j`h`j`i`V`j`g`j`];`Y`b`i`j`b`Y`g`Y`U`h`V`Y`h`U`g`g`Y`a`V`m`f`

REPAIR PROCEDURE

SUPPLEMENTAL RESTRAINT SYSTEM (SRS) SEAT BELTS WITH PRE-TENSIONER

SEAT BELTS WITH PRE-TENSIONER

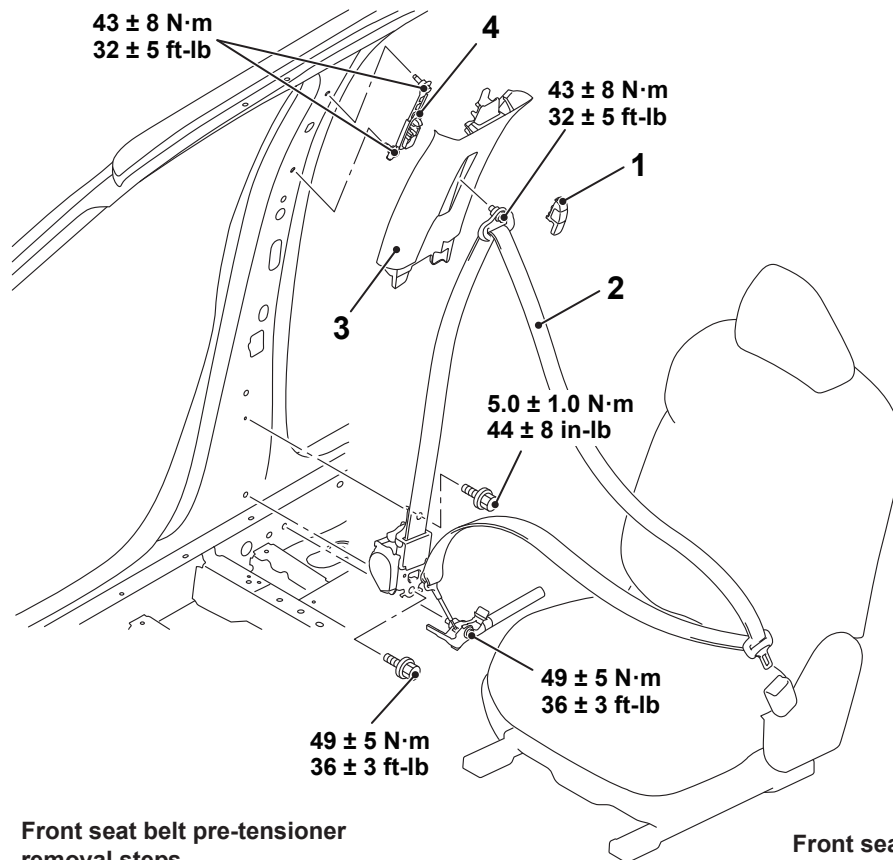
REMOVAL AND INSTALLATION

M15240041A0020

Pre-removal operation

Turn the ignition switch to the "LOCK" (OFF) position.

<<FRONT SEAT BELTS>



BCKA0564AA

Front seat belt pre-tensioner removal steps

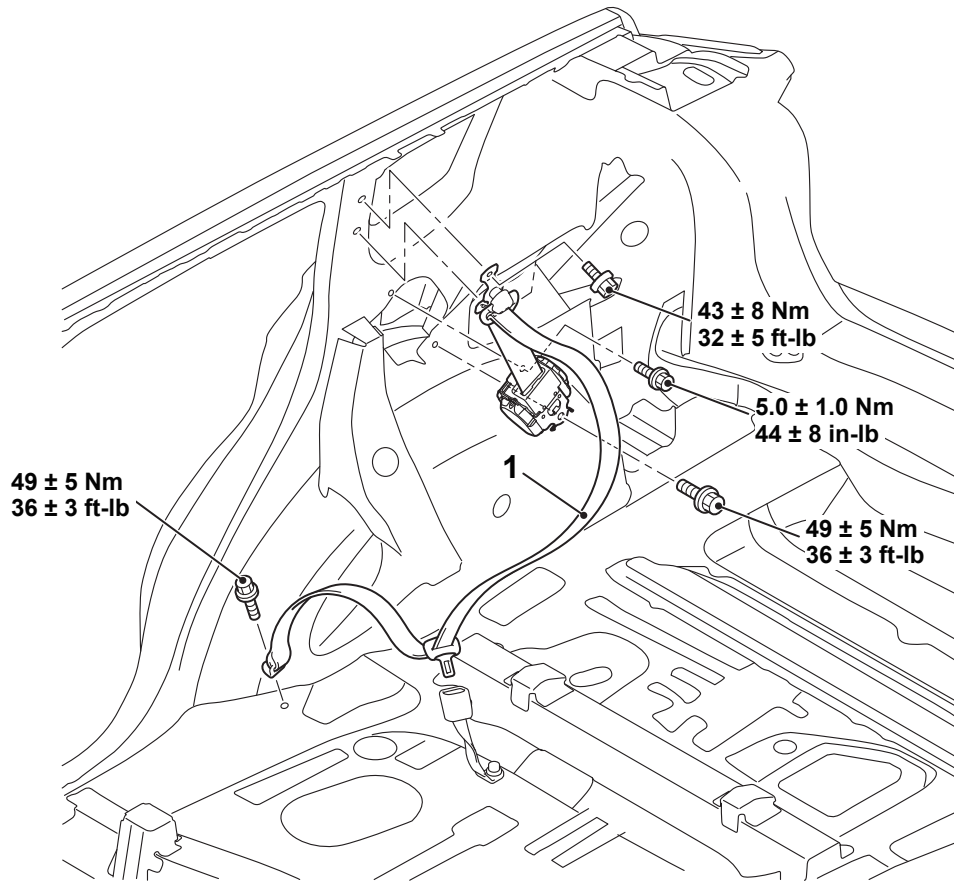
- Disconnect the negative (-) battery terminal
 - Center pillar lower trim (Refer to GROUP 52A - Interior Trim P.52A-28).
- <<A>>
1. Front seat belt sash guide cover
 2. Front seat belt with pre-tensioner
 3. Center pillar upper trim (Refer to GROUP 52A - Interior Trim P.52A-28)
 4. Front seat belt anchor adjuster

Front seat belt pre-tensioner installation steps

- >>A<<
4. Front seat belt anchor adjuster
 3. Center pillar upper trim (Refer to GROUP 52A - Interior Trim P.52A-28)
2. Front seat belt with pre-tensioner
 1. Front seat belt sash guide cover
- Center pillar lower trim (Refer to GROUP 52A - Interior Trim P.52A-28).
 - Connect the negative (-) battery terminal
 - Check and clear all DTCs (5211/SR-22-002)

**SUPPLEMENTAL RESTRAINT SYSTEM (SRS)
SEAT BELTS WITH PRE-TENSIONER**

<SECOND SEAT BELTS>



BCKA0583AA

Rear seat belt pre-tensioner removal steps

- Disconnect the negative (-) battery terminal.
- Quarter upper trim (Refer to GROUP 52A - Quarter Trim P.52A-28).

<<A>>

1. Rear seat belt with pre-tensioner

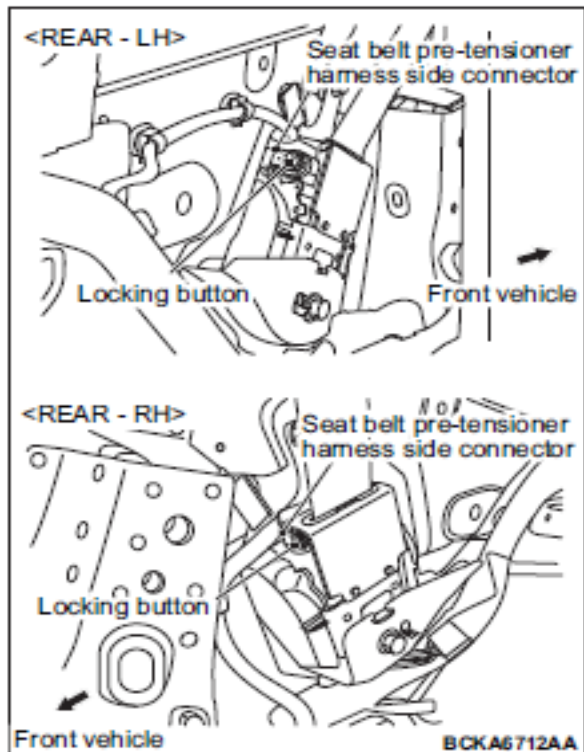
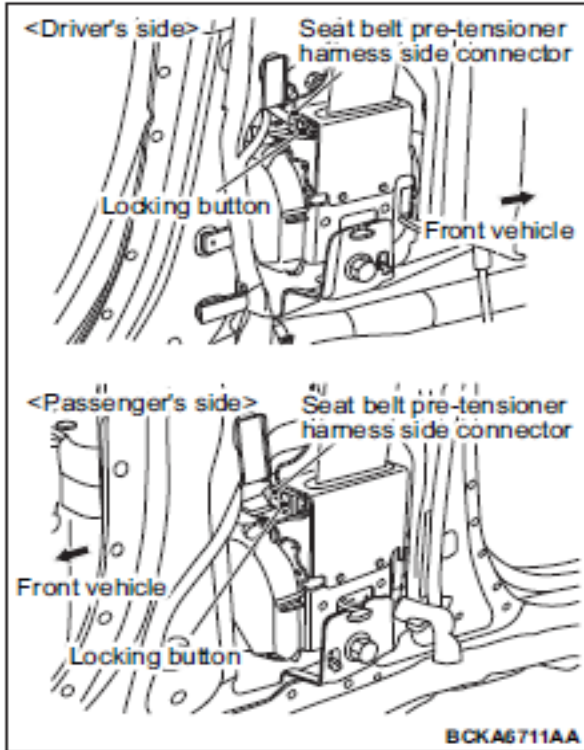
Rear seat belt pre-tensioner installation steps

- >A<<
1. Rear seat belt with pre-tensioner
 - Quarter upper trim (Refer to GROUP 52A - Quarter Trim P.52A-28).
 - Connect the negative (-) battery terminal.
 - Check and clear all DTCs

SUPPLEMENTAL RESTRAINT SYSTEM (SRS)
SEAT BELTS WITH PRE-TENSIONER

REMOVAL SERVICE POINT

<<A>> SEAT BELT PRE-TENSIONER REMOVAL

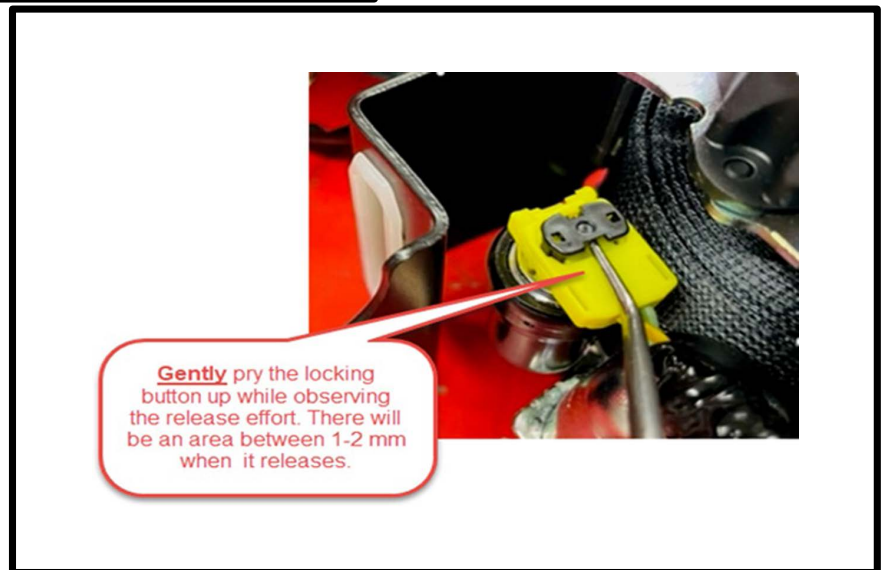
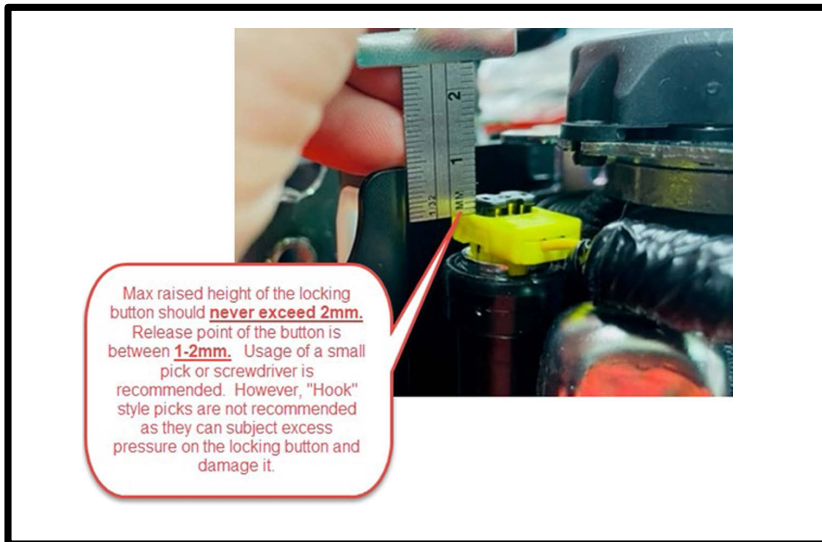


CAUTION:

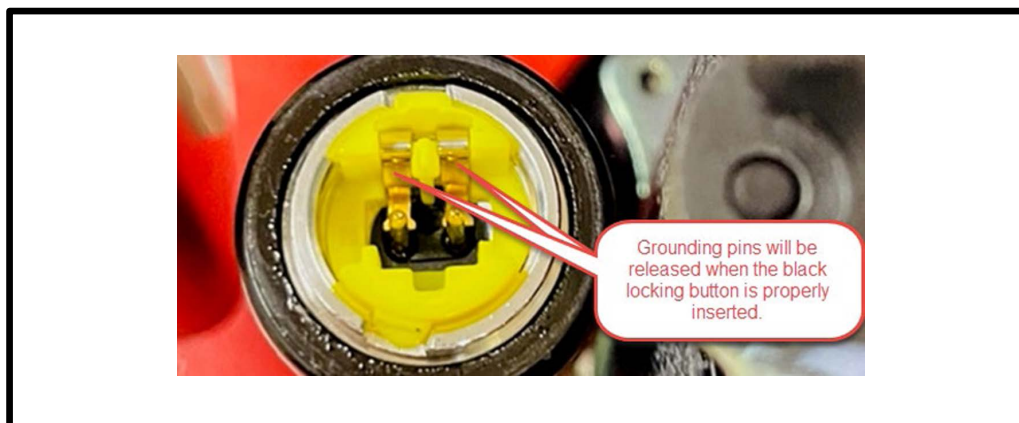
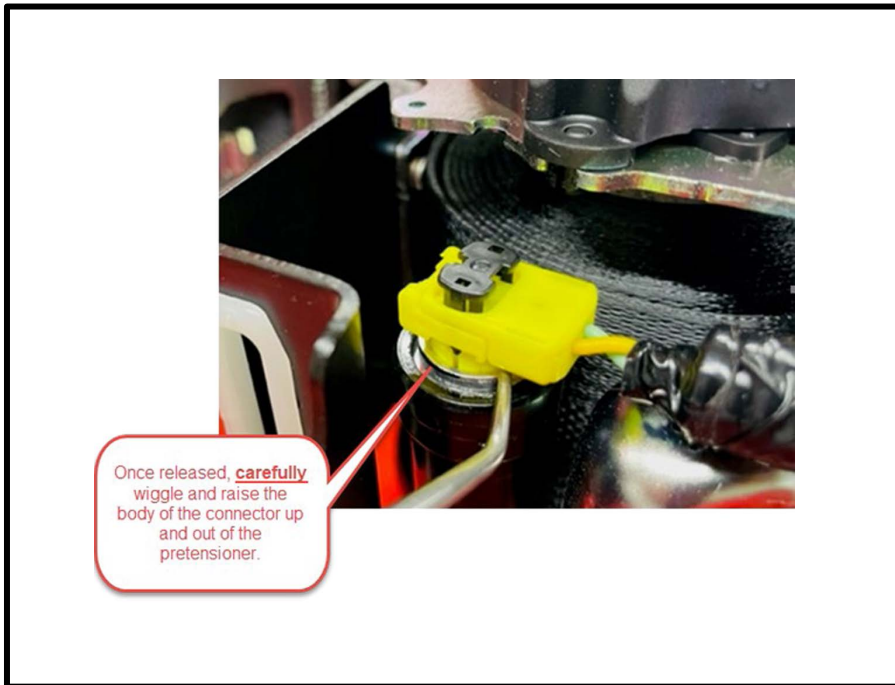
Failure to follow proper procedure and applying unnecessary force will damage the connectors. The connectors are not available as a service part and replacement of the entire floor harness will be required. Please use the instructions below for proper removal and installation of the pretensioner connector.

Pretensioner connector removal/install Process

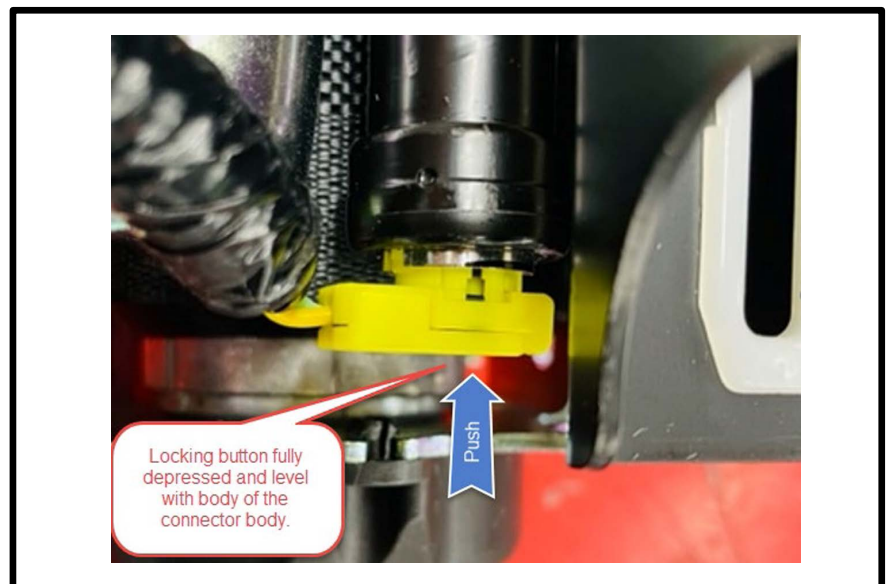
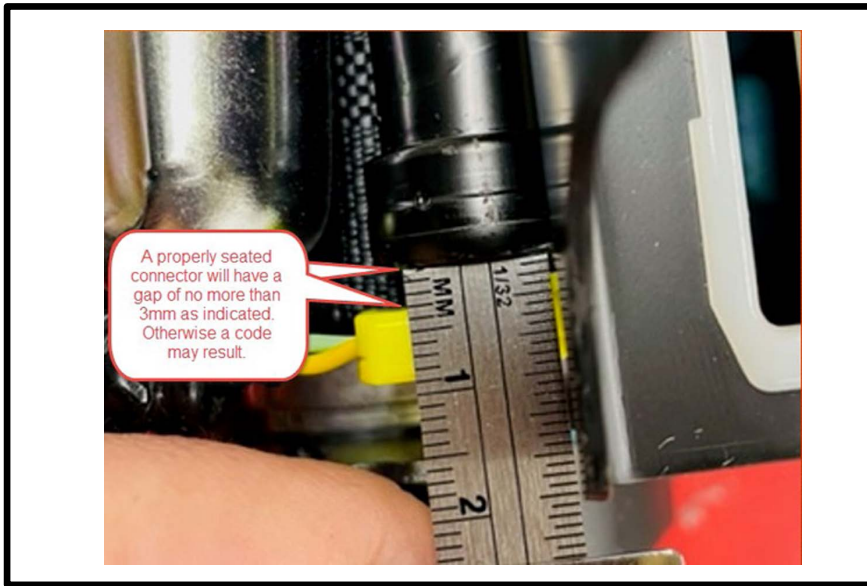
1. Removal process to avoid damage.



2. Removal and inspection of connector.



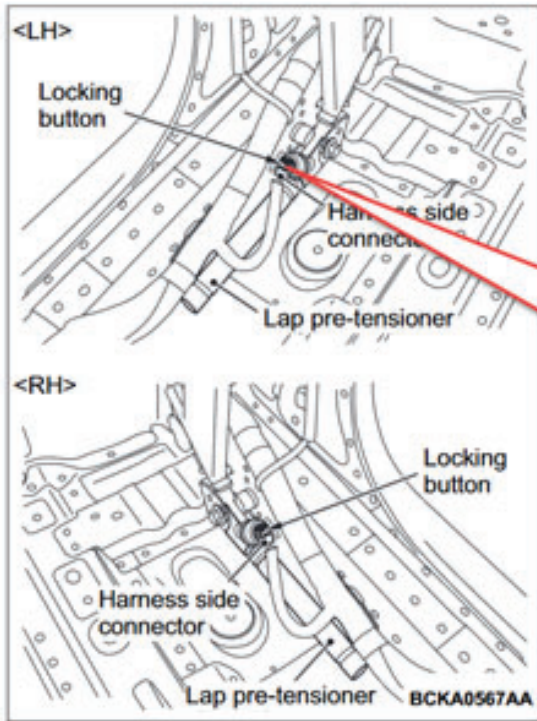
3. Proper installation and inspection.



CAUTION:

Please use **EXTRA CAUTION** when removing the locking button on the seat belt pre-tensioner connector. The locking button should only be raised approximately 1mm in an upwards direction. This will release the yellow connector body that can now be gently pulled from the pre-tensioner.

**SUPPLEMENTAL RESTRAINT SYSTEM (SRS)
SEAT BELTS WITH PRE-TENSIONER**

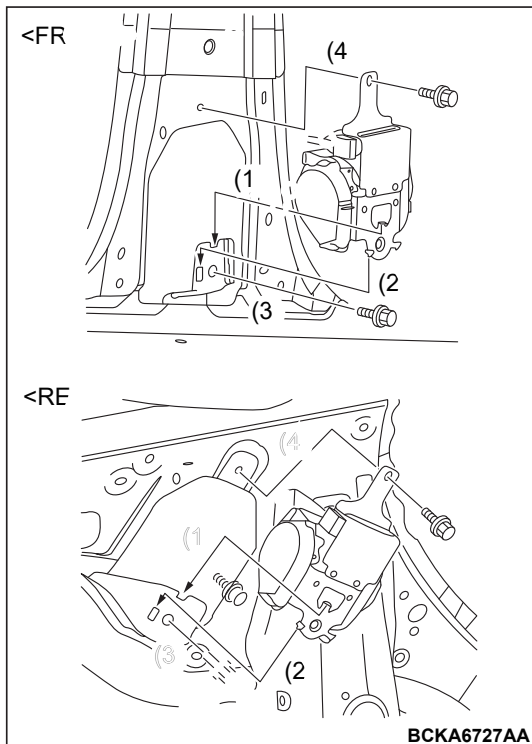


1. Use the flat-tipped screwdriver to pull out the locking button of wiring harness side connector, and release the lock.

USE EXTREME CARE TO AVOID DAMAGE when releasing the black locking button. **DO NOT ATTEMPT TO REMOVE COMPLETELY!** The locking button is only designed to be raised approximately 1mm which permits removal of the connector.

**INSTALLATION SERVICE POINT
>>A<< SEAT BELT PRE-TENSIONER
INSTALLATION**

Insert the claws of the seat belt retractor into the body, and install the seat belt retractor in order of the numbers shown in the figure.



**SUPPLEMENTAL RESTRAINT SYSTEM (SRS)
SEAT BELTS WITH PRE-TENSIONER**

INSPECTION

M15240042A0007

 DANGER

Never attempt to measure the circuit resistance of the seat belt pre-tensioner and lap pre-tensioner (squib), even if you are using the specified tester. If the circuit resistance is measured with a tester, accidental air bag deployment will result, and possible serious personal injury.

 WARNING

If any component damage is found during the following inspection, replace the seat belt pre-tensioner with a new one.

If any malfunction is found in the following inspections, replace the seat belt with pre-tensioner with a new one.

1. Check the seat belt pre-tensioner and lap pre-tensioner for dents, cracks or deformation.
2. Check the harness and connector for damage and the terminal for deformation.

PARTS INFORMATION

Use the genuine Mitsubishi part(s) listed below:

DESCRIPTION	PART NUMBER	QTY
SEAT BELT ASSY, OTR RH (FRONT)	86884W161P	1
SEAT BELT ASSY, OTR LH (REAR)	88845W131P	1
SEAT BELT ASSY, OTR RH (REAR)	88844W121P	1

WARRANTY INFORMATION

VEHICLES	CAMPAIGN OPERATION	LABOR TIME (HRS)	REPAIR DESCRIPTION
2022 OUTLANDER	C2202R01	0.2	INSPECT THE SEAT BELT LOT NUMBER ON THREE SEAT BELTS
	C2202R02	1.0	INSPECT THE SEAT BELT LOT NUMBER ON THREE SEAT BELTS AND REPLACE FRONT PASSENGER SEAT BELT ASSEMBLY.
	C2202R03	1.1	INSPECT THE SEAT BELT LOT NUMBER ON THREE SEAT BELTS AND REPLACE 2 ND ROW RIGHT OR LEFT SEAT BELT ASSEMBLY.
	C2202R04	1.4	INSPECT THE SEAT BELT LOT NUMBER ON THREE SEAT BELTS AND REPLACE TWO SEAT BELT ASSEMBLIES.
	C2202R05	1.7	INSPECT THE SEAT BELT LOT NUMBER ON THREE SEAT BELTS AND REPLACE THREE SEAT BELT ASSEMBLIES.

WARRANTY / RECALL CAMPAIGN CLAIM INFORMATION

Enter all claims as claim type 'C' - Recall/Campaign Claims.

Please follow the campaign instructions when entering each claim. See the claim example provided below.

RECALL CLAIM HEADER SECTION

The screenshot shows the 'Service Warranty Recall Claim' form. Key fields include:

- Customer Information:** Title, Last Name, Business Name, Street Address, City, Zip/Postal Code, Residence Phone, State/Province, Email Address, Business Phone.
- Campaign Information:** Campaign Operation No (C2202R), Miles/Km, VIN (4A4AR4AU6FE), Service Technician, Spec Value.
- Vehicle Information:** Dealer No, Repair Date Out, Emp No, VIN (4A4AR4AU6FE024780).

Callouts in the image provide the following instructions:

- Enter in the first 6 characters of the campaign number: C2202R (pointing to the Street Address 2 field).
- Check the Open Campaign area of the Superscreen each time to be certain of a vehicle's eligibility. Only VINs showing C2202R as open are involved.

After entering the required customer data, vehicle information, selecting the applicable repair campaign and scenario performed (please note there are only 5 possible repair scenarios for this campaign) click the "Save and Continue" button. The system will automatically fill-in several fields.

IMPORTANT

Affected new or used inventory vehicles must be repaired before the vehicle is sold/delivered. Dealers must check their inventory vehicles' VINs on the Warranty Superscreen to verify whether the vehicle is involved in this recall campaign. It is a violation of Federal law for a dealer to sell/deliver a new motor vehicle or any new or used item of motor vehicle equipment (including a tire) covered by the notification under a sale or lease until the defect or noncompliance is remedied.