

HEARTLAND MINI BREAKER 22V305 & 2022-239

WCC: 99.01.68

RATE: .3

Tools needed:

1. Screw gun with proper bit (square bit for access panel)
2. Philips bit for panel box
3. 3/8" socket or wrench

Parts List

1. 11131: Boot – (VTE-464NOV02) – Rubber

How to.

1. Locate Panel Box (See Picture 1)
 - a. Some floor plans may have an access panel that you can reach the mini breaker through
 - b. If there is an access panel remove panel with square bit to access mini breaker otherwise,
2. Remove Panel box with Philips screw driver or bit (Picture 2)
3. Once removed, locate 12 volt mini breaker secured on the floor behind panel box (Picture 3 & 4)
4. Add rubber boot to top of mini breaker (part 11131: Boot – VTE-464NOV02 – Rubber)
 - a. Remove the two wire retaining nuts with a 3/8" socket or wrench
 - b. Lift up wires
 - c. Add the red rubber boot
 - d. Replace the wires and secure with nuts.
 - e. Cap posts with boot cover (as seen in picture 4)
5. Replace panel box

HEARTLAND MINI BREAKER 22V305 & 2022-239

WCC: 99.01.68

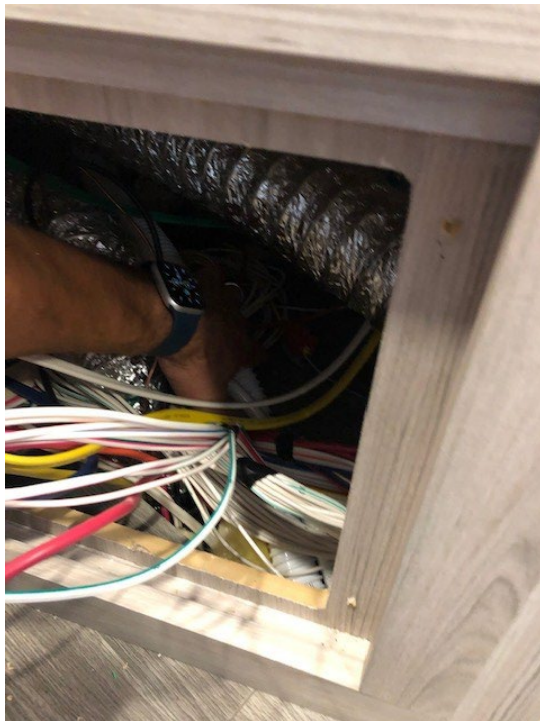
RATE: .3



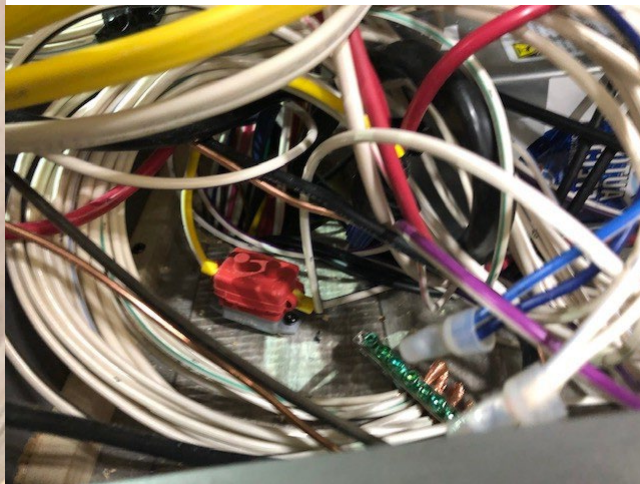
Picture 1



Picture 2



Picture 3



Picture 4