

RECALL: NHTSA 22V156

SUBJECT: Incorrect Front tire pressure on Placard Label and Tire Pressure Label

APPLIES TO: Roadtrek: 2020 and 2021 SS Agile models

CONDITION: Placard and Tire Pressure labels incorrectly state the front tire pressure as 46 psi

CORRECTION: Placard label and Tire Pressure label need to be replaced with new labels that state the front tire pressure as **52 psi**

Instructions

PLEASE READ THE ENTIRE BULLETIN BEFORE PROCEEDING WITH ANY WORK. IF THERE ARE ANY CONCERNS WITH THE PROCEDURES CONTAINED IN THIS DOCUMENT, CONTACT ROADTREK INC AT dealersupport@roadtrekinc.com OR 1-888-762-3873.

PART/SERVICE INFORMATION:

Labor Time: 0.25 hrs

Qty.	Part Number	Description
1		Placard Label
1		Tire Pressure Label

RECALL: NHTSA 22V156

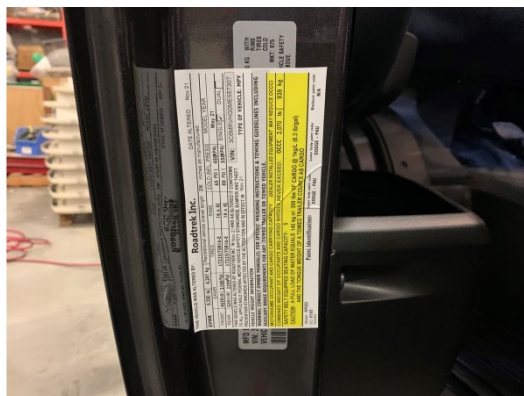
STEP-BY-STEP INSTRUCTIONS:

STEP 1: Find the location of the Placard label on the side of the driver's door.



STEP 2: Wipe the surface clean with a damp cloth and allow to dry.

STEP 3: Peel off the backing of the new placard label and apply it over top of the original label with the same orientation



RECALL: NHTSA 22V156

STEP 4: Find the location of the Tire Pressure label on the B pillar of the driver side.



STEP 5: Wipe the surface clean with a damp cloth and allow to dry.

STEP 6: Peel off the backing of the new Tire Pressure label and apply it over top of the original label with the same orientation.

