



## **SAFETY RECALL**

### **CONVENTIONAL AIR COMPRESSOR CHARGE PIPE TORQUE**

RECALL NO: M0360

DATE: 3-4-2022

REFERENCE NO: QA-220304-N1

**SUBJECT VEHICLES:** Certain 22MY Conventional L-Series trucks equipped with a Cummins B6.7 engine.

**Note:** *Refer to the appropriate Vehicle Identification Number in the warranty system to determine vehicle eligibility.*

## **OVERVIEW:**

The charge pipe flare nut at the air compressor may not have been torqued to manufacturer specification. This procedure will document proper torque value application to the air compressor charge pipe flare nut, and leak check confirmation.

***NEW VEHICLES IN DEALERSHIP INVENTORY*** As required by Federal law (49 Code of Federal Regulations §577.13), dealerships are not to deliver any new vehicles in their inventory that are involved in a Safety Recall unless the vehicle has been remedied. Refer to the appropriate Vehicle Identification Number (VIN) list to determine vehicle eligibility.

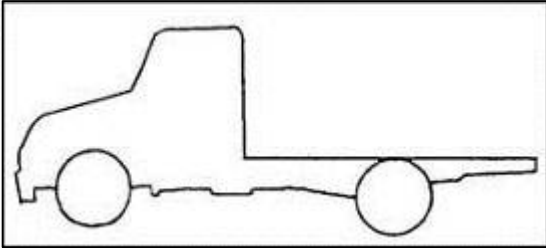
## **BEFORE YOU BEGIN:**

- Read and understand all instructions and procedures before you begin the work.
- Read and follow all **NOTICES** and **WARNINGS** set forth in this publication. These alerts help to avoid damage to components, serious personal injury, or both.
- Park the vehicle on a flat, level and solid surface.
- Apply the parking brake firmly and confirm parking brake activation.
- Turn off the engine and remove the key from the ignition switch.
- Always wear safety glasses or goggles to protect your eyes.
- Place wheel chocks in front of and behind all the wheels to prevent the vehicle from moving.



## VEHICLE PREPARATION:

1. Park the vehicle on a level and solid surface. Confirm the engine is stopped, the starter switch is in the off (LOCK) position, and the key is removed.

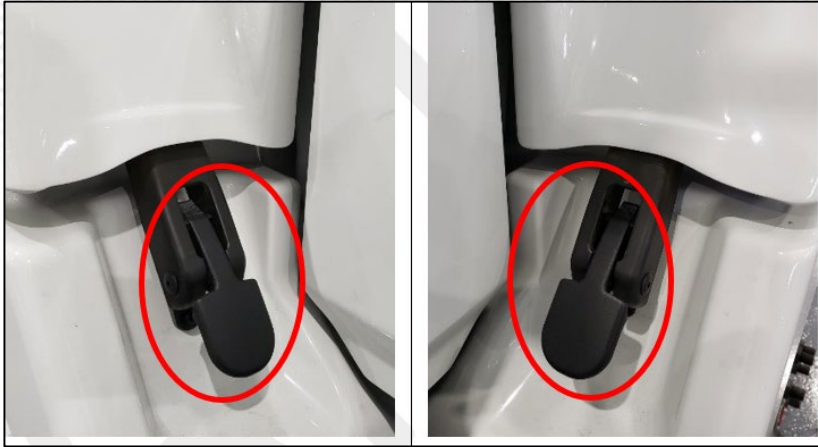


2. Apply the parking brake. Chock all of the wheels.



## Repair Procedure:

1. Release the hood latches on the left and right side of the vehicle.

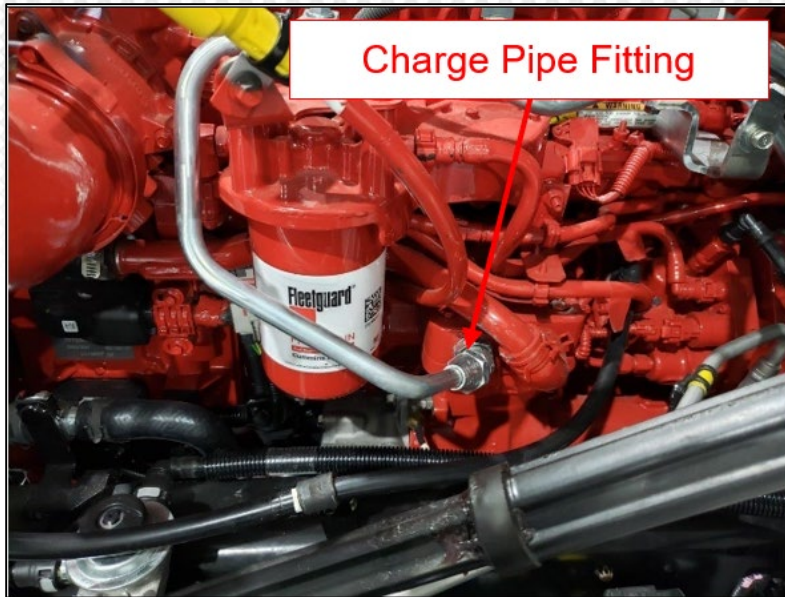


2. Fully raise the hood.





3. Locate the flare nut fitting on the left side of the engine that attaches the air compressor charge pipe to the air compressor.



4. Using a 30mm crows foot wrench, tighten the flare nut to the specified torque.

**Specified Torque:** 65 lb-ft (88Nm)



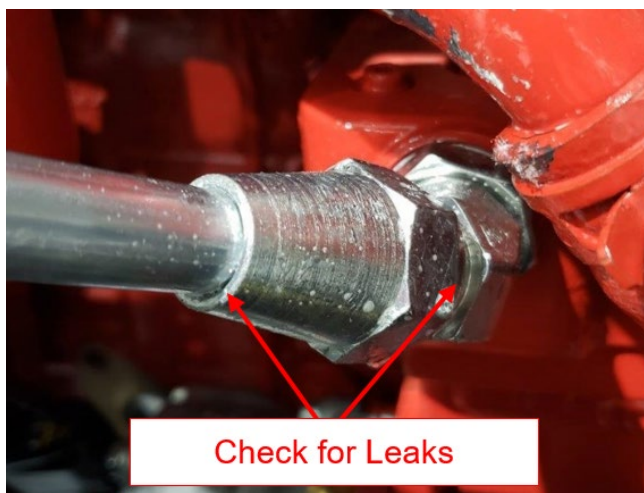
5. Start the vehicle and allow the engine to run until both air tanks reach greater than 120psi and air compressor governor cut-off is achieved. Turn the ignition switch to the off (LOCK) position and remove the key.

**WARNING:** Failure to turn the engine off could result in serious personal injury.



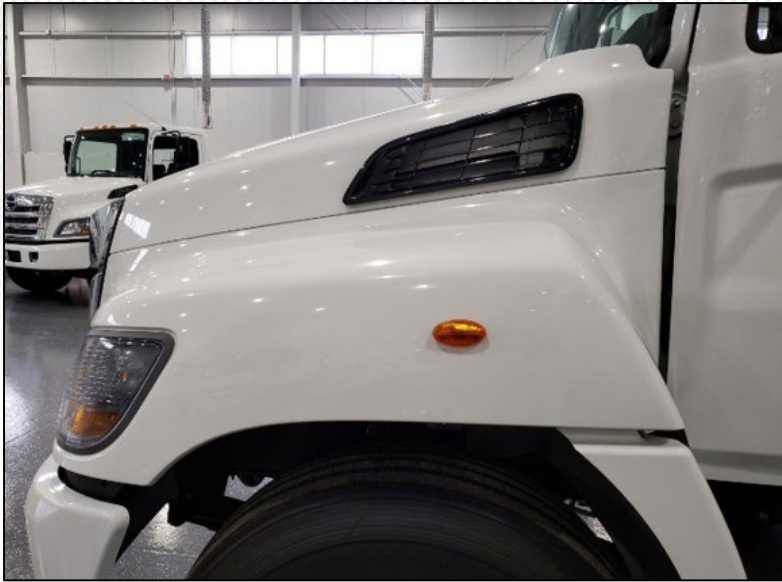
6. Spray a soapy water mixture on the air compressor charge pipe flare nut to confirm no leakage is present.

**WARNING:** If leakage is detected, reconfirm proper fitting torque was applied in step 4. Do not release the vehicle to the customer if leakage is present.



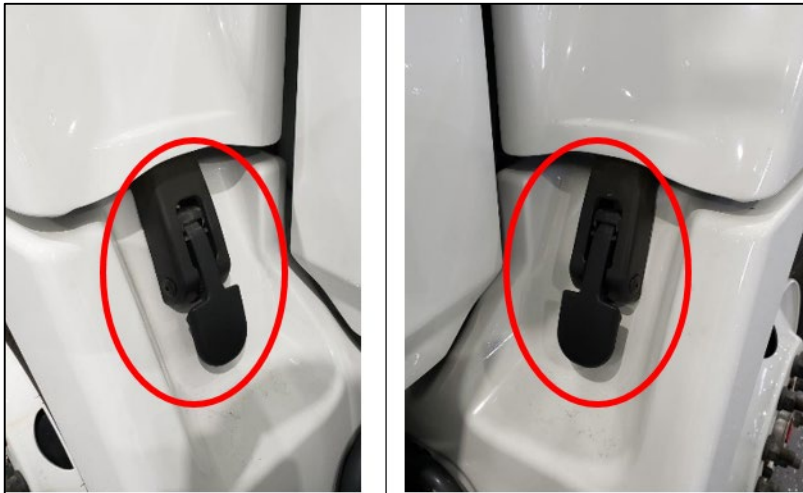


7. Lower the hood fully.



8. Close the left and right hood latches.

Proceed to “Final Inspection”.



## **FINAL INSPECTION:**

1. To complete this procedure review and confirm the following:
  - The air compressor charge pipe has been tightened to the specified torque
  - The air compressor charge pipe has been checked for leakage
  - The hood has been lowered and both left and right hood latches are closed

## **CLAIM APPLICATION**

*Reimbursable in accordance within the terms and policies of the Hino limited warranties.*

### **Air Compressor Charge Pipe Tightening:**

- a) Recall No: M0360
- b) Labor charge: 0.4 Hours
- c) Warranty code: 08232
- d) Trouble code: 40
- e) Operation code: 08250AOT
- f) Original failed part: 9999999999

