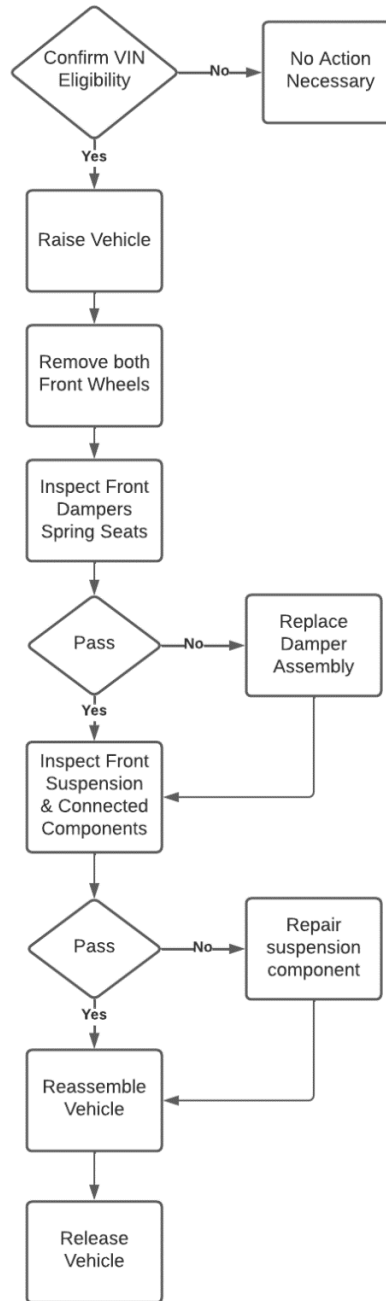


Technical Instructions
Lucid Safety Recall Campaign N01
Front Suspension Damper Inspection

Technical Instructions Lucid Safety Recall Campaign N01 - Front Suspension Damper Inspection

Process Overview



Warranty Claim Procedure

To help ensure that all vehicle repairs are claimed correctly, please reference the following when creating work orders for this campaign:

Job Code N01 – Front Damper Inspection
 Pay Type Campaign
 Defect Code Campaign
 Casual PN P11-SDFSR1-01/02 & P11-SDFSL1-01/02

Please use one (1) of the following Labor Operation Codes that reflects the procedure performed on the vehicle.

Procedure 1 Front Damper Inspection LF and RF

Labor Operation Code	Description	Flat Rate Time
96.100001	N01-Front Damper Inspection	0.3

Procedure 2 Front Damper Inspection LF and RF / Replace 1 Damper

Labor Operation Code	Description	Flat Rate Time
96.100002	N01-Front Damper Inspection Replace 1 Damper	1.4

Procedure 3 Front Damper Inspection LF and RF / Replace 2 Damper

Labor Operation Code	Description	Flat Rate Time
96.100004	N01-Front Damper Inspection Replace Both Damper	2.3

NOTE: Flat Rate Time is subject to change

For all affected vehicles, click on the VIN recall record (under the Related section on the Asset) and insert your work order number in the Work Order field to automatically populate the required job code(s). Once repair is finished, change the status on the VIN Recall to 'Closed'.

Parts

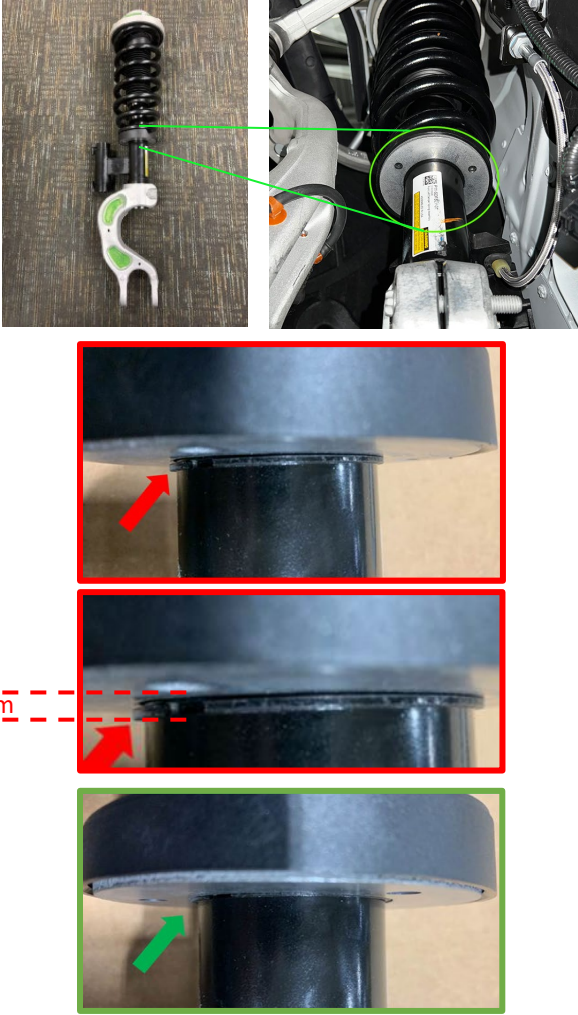
The following parts are required to complete the removal and replacement of the suspension damper assembly per side. Please order parts for both sides.

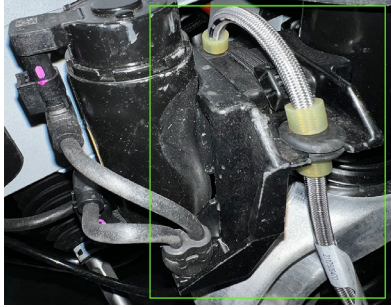

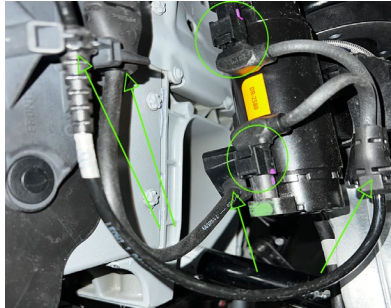

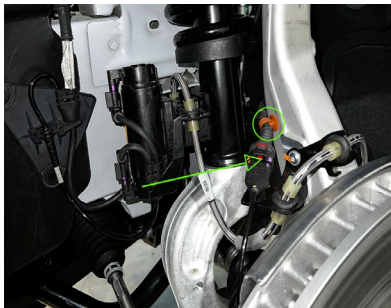
Part No.	Description	Qty (per side)
P00-F14JDG-02	T30 Screw Wheel Speed Sensor Bracket	1
P00-F330DD-00	20mm Lock Nut Out Tie Rod	1
P00-FA7S0P-00	Zip Tie Damper Spring Hose	1
P00-F29DCE-00	21mm Screw Control Arm	1
P00-F336DD-00	24mm Lock Nut Control Arm	1
P00-F643CZ-00	Lock Washer Upper Aft and Fore Link	2
P00-F296CE-02	13mm Screw Aft Link	1
P00-F296CE-02	13mm Screw Fore Link	1
P00-F279CE-01	10mm Screw Top Damper Spring	3
P11-SDFSR1-02	Front Right Damper Spring Assembly*	1
P11-SDFSL1-02	Front Left Damper Spring Assembly*	1

*One (1) Front Damper Spring Assembly per side

Technical Instructions

Safety Recall Campaign N01 – Front Suspension Damper Inspection

<p>1. Raise vehicle on a 2-post lift or using a suitable jack and jack stands</p>	<p>Refer to Service Manual</p>
<p>2. Remove both front wheels</p>	<p>Refer to Service Manual</p>
<p>3. Inspect Suspension Damper Spring Seat</p> <p>Perform a visual and touch inspection of the entire circumference of the front suspension damper spring seat for correct installation. The snap ring should not be exposed and you should not be able to feel any snap ring gap.</p> <p>RED is NOK (NOT OK) Condition</p> <p>NOTE: An incorrectly installed spring seat will have the snap ring exposed approximately 2mm below spring seat shown in RED</p> <p>GREEN is OK Condition</p> <p>NOTE: A correctly installed spring seat will have the snap ring relatively flush with the spring seat (as shown in GREEN)</p>	
<p>4. Replace Suspension Damper if NOK Condition</p> <p>#WARNING: Inspect service part suspension damper assembly prior installation</p>	<p>Refer to Service Manual Front Damper Spring Assy-LH/RH Remove and Replace</p>

<p>5. Inspect installation of jounce hose bracket</p>	
<p>6. Inspect routing of brake jounce hose, ensure no kinks/twists, and ensure all grommets are seated</p>	
<p>7. Inspect two (2) damper adaptive solenoid electrical connection and routing of harness</p>	
<p>8. Inspect brake wear sensor located on the LF inner brake pad for proper connection</p>	
<p>9. Inspect for proper routing and electrical connection of both front wheel speed sensors</p>	
<p>10. Correct issues if identified</p>	