

RECALL INSPECTION AND REPAIR INSTRUCTIONS

NHTSA Recall #: 22V-068

TC #: 2022-058

Tiffin #: TIF-120

Models Involved: 2018-2022 Allegro & Breeze units with the 1200W inverter option

Purpose: To correct the torque on the DCD panel and update torque label.

Tools Needed:

Regular wrench
Torque wrench
7/16" socket
9/16" socket
5/8" socket
Drill

Parts Needed:

1200W Recall Kit # 5130825

FLAT RATE CODES AND TIMES

When filing the warranty claim for payment please use the following flat rate codes and times.

For all Allegro Breeze units, **BR9852RC01**, for 30 minutes.

For all Allegro Open Road 31MA, 32FA, 32SA, 34PA & 36UA floorplans, **AL9852RC01**, for 30 minutes.

For all Allegro Open Road 36LA units only, **AL9853RC01**, for 1 hour.

CORRECTION PROCEDURE:

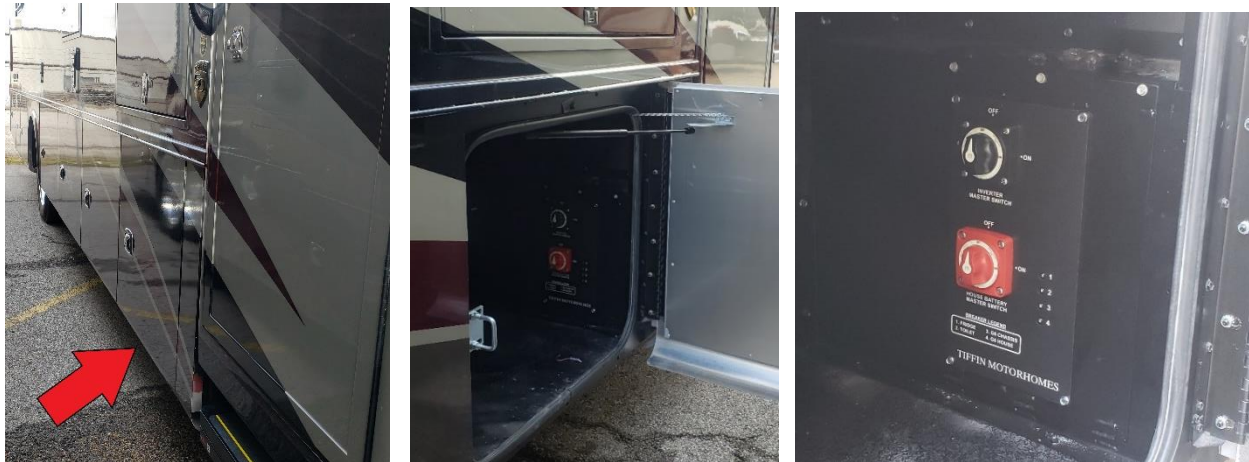
1. Disconnect the batteries
 - a. The main feed to the house and chassis batteries needs to be disconnected.
 - b. Battery locations house:
 - i. 2018 - 2022 Allegro (all floorplans except 2019 – 2022 36LA) passenger rear cargo door
 - ii. 2019 - 2022 36LA moved to under the entry steps
 - iii. Breeze front passenger cargo door
 - c. Battery locations chassis:
 - i. 2018 – 2022 Allegro (all floor plans) under front cap hood.
 - ii. 2018 – 2022 Breeze (all floor plans) rear passenger cargo door.

2. Determine the location of the DCD panel.

- For the 32FA, 32SA, 34PA, & 36 UA, the DCD panel is located in the rear most cargo compartment on the passenger side of the coach.



- For the 36LA, the DCD panel is located in the cargo compartment behind (to the rear of the coach) the entry door on the passenger side of the coach.



- For all Breeze units, the DCD panel is located on the passenger side of the coach in the second compartment to the rear of the entry door



- Using the 5/8" bit and the drill, remove the screws holding the DCD board in place. (The DCD board mounts in a black panel that has a flange which is held in place.)

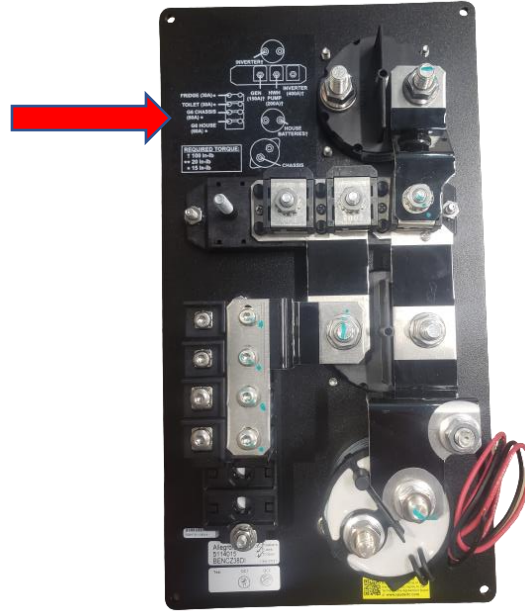
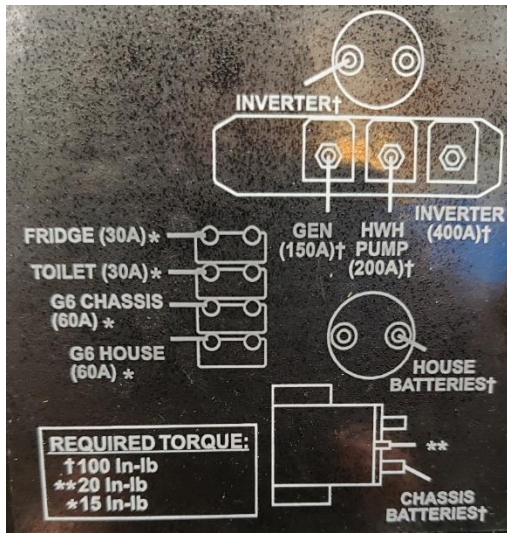


- Remove the DCD panel, and inspect for any fuse damage or buss bar discoloration.
- Check and adjust the torque as necessary.

100-inch lbs.



6. Install new sticker over old sticker.



7. Reinstall DCD Panel.
8. Reconnect the main feed to the house batteries.