



An Oshkosh Corporation Company

SAFETY RECALL BULLETIN TB2022001 NHTSA SAFETY RECALL:22E-067

42684 CRANE STABILIZER WORK INSTRUCTIONS

Classification:	Mandatory Mechanical Inspection TB2022001
Subject:	IMT 42684 Crane Stabilizer Beam Crack Instructions
Attn:	IMT Customer/Owner
Date:	September 20, 2022
Safety Recall Information:	This document provides work instructions to assemble and disassemble the 42684 crane outer and inner support beams.
Affected Models:	Wallboard Crane Model 42684 S/N 138001 - 1380032

Do you have questions? If you have questions or need additional assistance, please contact IMT Technical Support at 800-554-4421 or 641-923-4633.

42684 CRANE STABILIZER WORK INSTRUCTIONS

Safety Notices:

- Follow your company’s Lock-Out/Tag-Out procedures to prevent the truck from being started or moved while performing work on this crane. If your company does not have a Lock-Out/Tag-Out procedure, follow OSHA 1910.147, Lock-Out/Tag-Out.
- Use appropriate Personal Protective Equipment (PPE) as required by your company.
- Read and understand the following instructions prior to starting work on the crane.

IMT has decided that a defect which relates, to motor vehicle safety, exists in all IMT Model 42684 Loaders have stabilizer beams with welds that over time can crack and break under load. If the cracks in the weld of the stabilizer beam are not addressed, they could progress and eventually cause the stabilizer beam to break. If the stabilizer beam breaks when the hydraulic loader is being operated, it may lead the vehicle to tip while lifting a load or to disengage the load, increasing the risk of property damage or injury. To avoid further damage and break down, it is decided to replace all beams on IMT 42684 cranes. You will receive (2) - 6390121 and (2) - 6390141. Please follow the instruction fitting procedure. The instruction manual is in the sending box together with the beams.

The replacement of beams may be finished maximum 2 weeks from receiving parts.

Torque Table

M5	10 N-m
M6	15 N-m
M8	30 N-m
M10	50 N-m

All threads must be applied with Loctite.

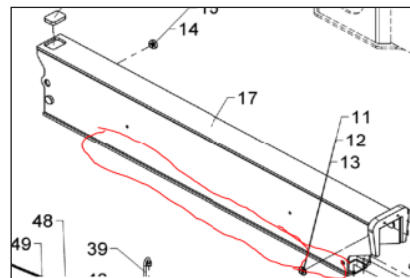


Figure 1

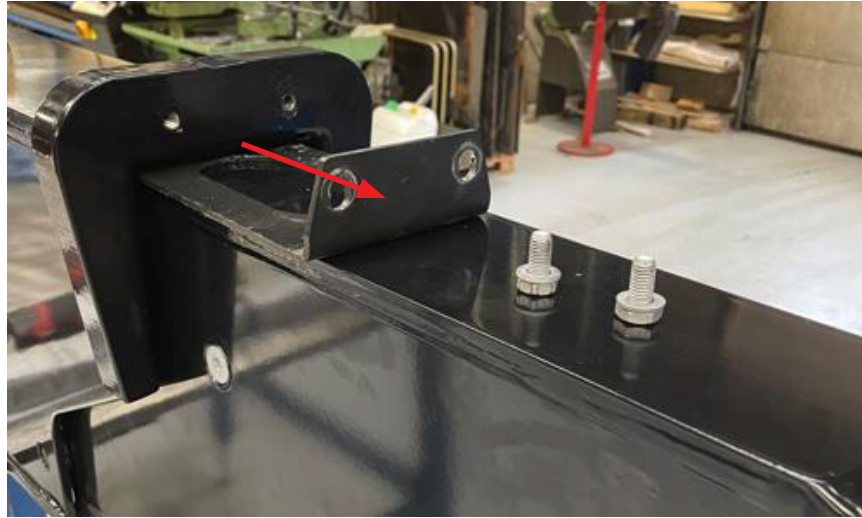
Tools Required:

- Allen key 4, 5, 6, and 8mm
- 17mm combination wrench
- 19mm combination wrench
- Torque wrench 0.6 N-m
- Thread tap M8 (included)
- Thread tap M10 (included)
- Steel screw extractor (included)
- Boltset for extraction (included)
- Measuring tape
- Reflective stickers (included)
- Loctite 243 for bolts
- Loctite 401 for bushings

Iowa Mold Tooling Co., Inc.
500 Highway 18 West • P.O. Box 189 • Garner, IA 50438-0189
641-923-3711 • 641-923-6063 (Fax)

Disassemble Outer and Inner Beam:

1. Extract inner beam from outer.
2. Loosen bolts, remove, and remove bracket.



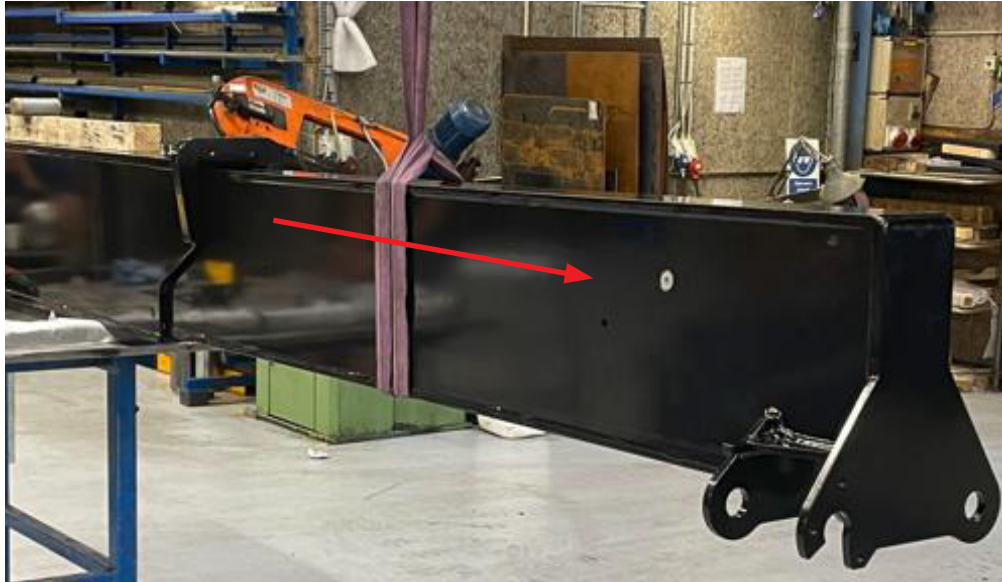
3. Remove the 2 bolts and bushings, one set on each side of the beam.



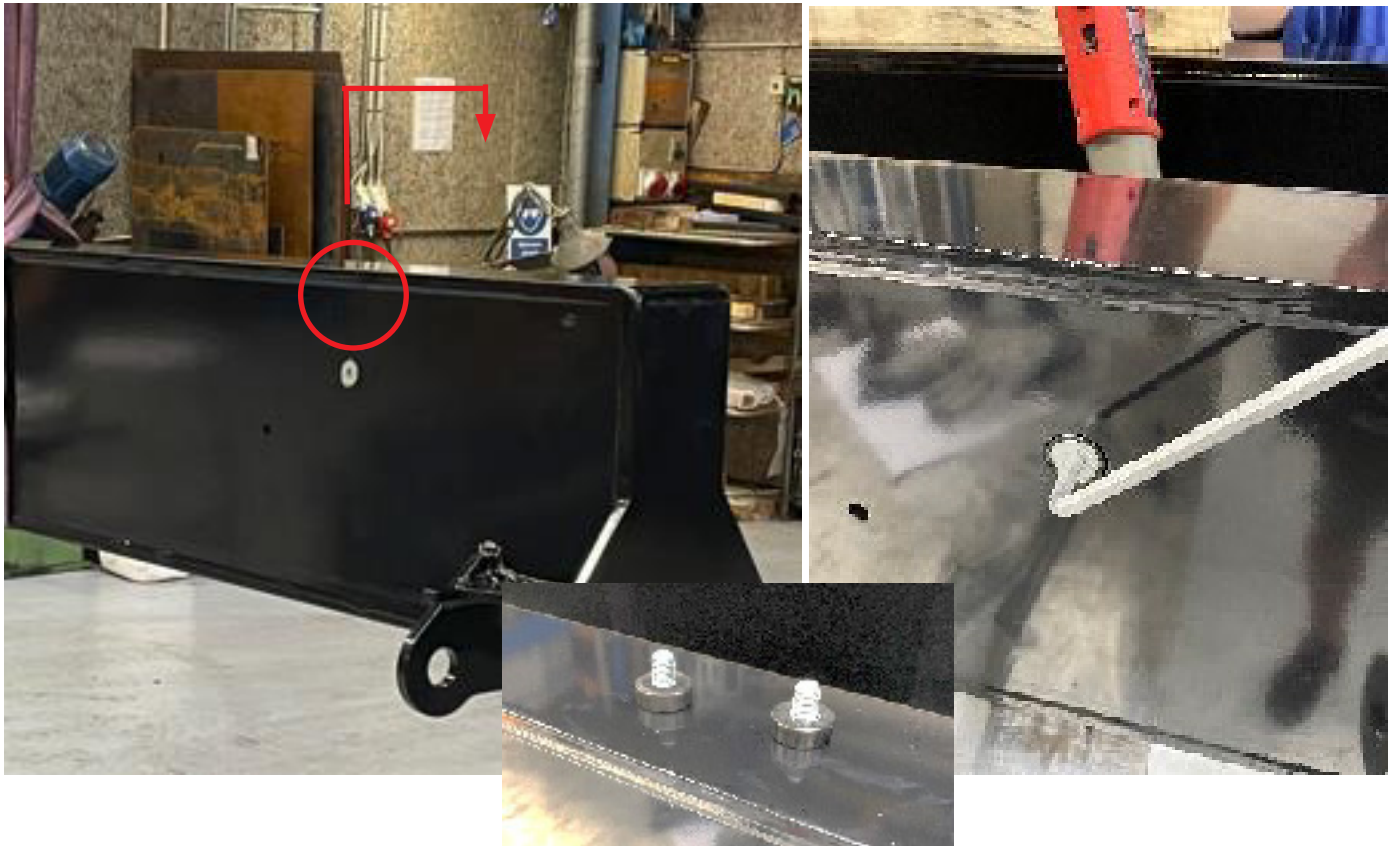
4. Remove bolts, washers, support bracket and bushing.



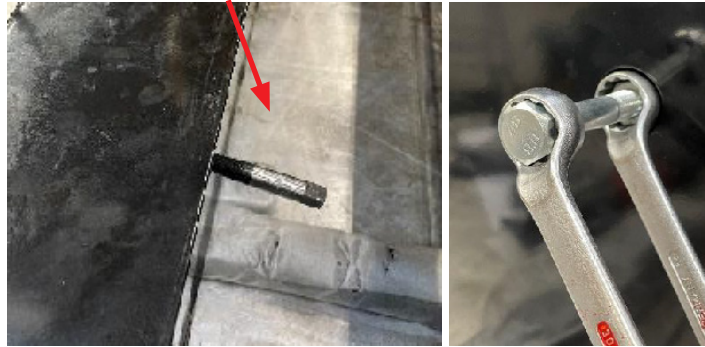
5. Attach sling to inner beam, adjust so distance is 1120mm from endplate. Extract beam and place on work table



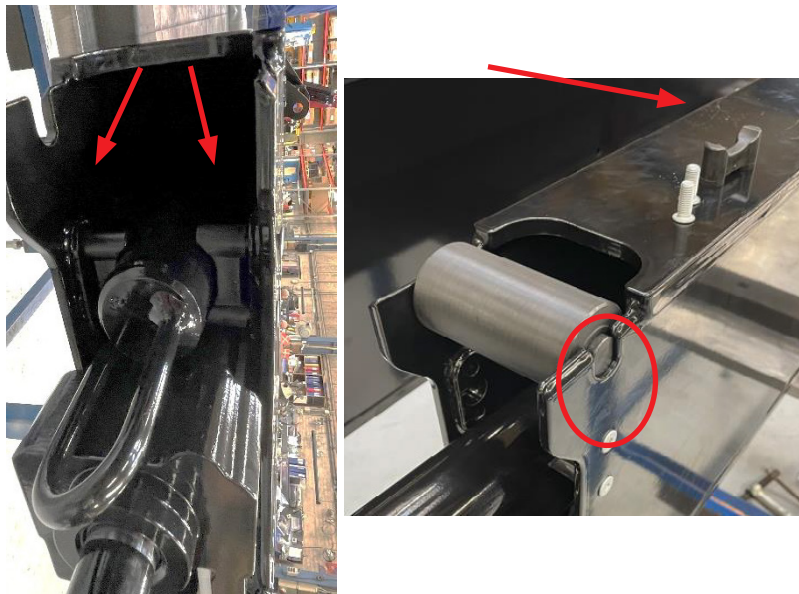
6. Remove 2 bolts and 2 bushings. You need to loosen both at the same time.



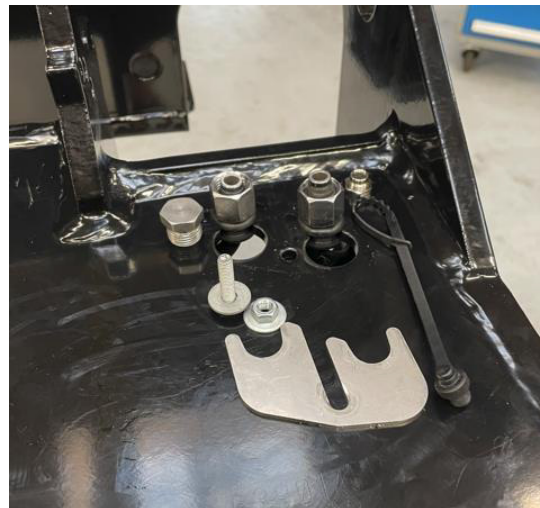
7. If you are not able to remove both bolts, you can use the steel screw extractor (included) and a long 8mm bolt and nut.



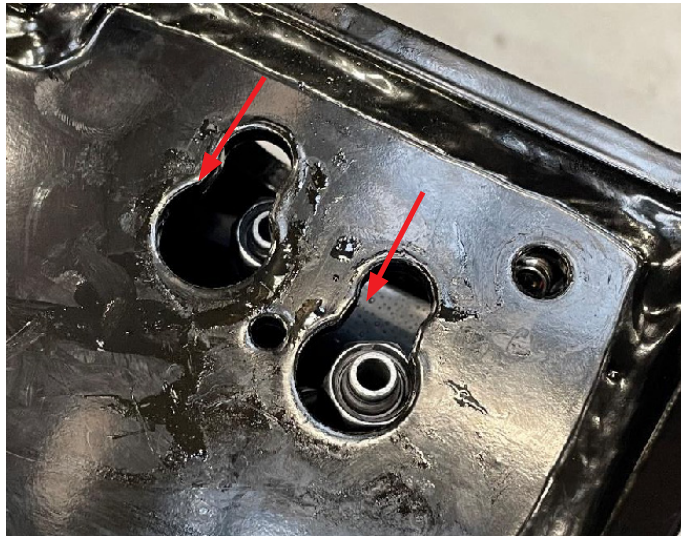
8. Remove the 2 brackets inside inner beam.



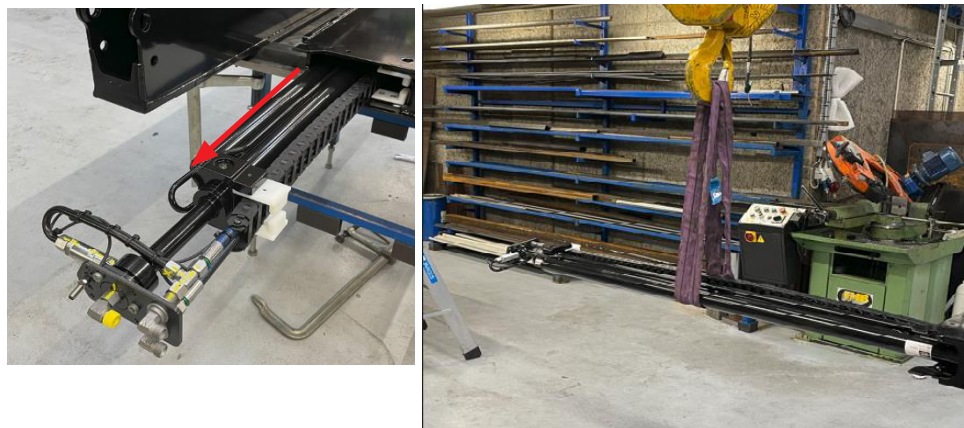
9. Remove bolt connection that holds the plate.
10. Remove the plate and the 2 plugs from hydraulic and 1 from electric housing.



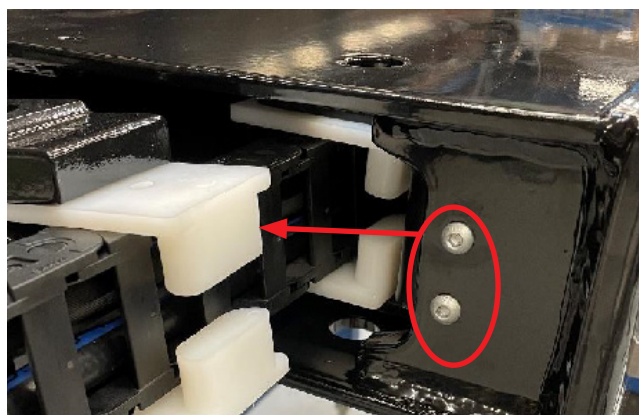
11. Push the hydraulic housings so they can be moved inside the beam.



12. Flip the beam 90 degrees.
13. Pull the cylinder assembly a bit out so you can attach sling.



14. Remove the 2 bolts.
15. Push the inside bracket so you are able to pull cylinder assembly out of the inner beam.



16. Remove cylinder assembly and store in safe area.

Assemble Inner Beam:

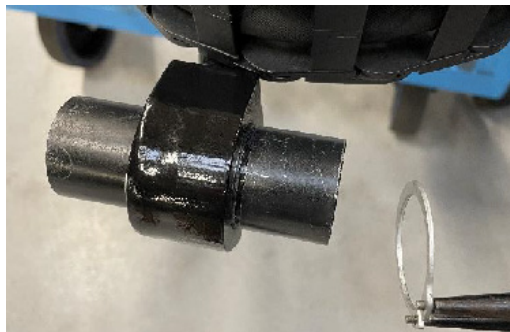
1. Place beam on work table, flip or as illustrated.



2. Bring cylinder assembly into work area. Attach slings to center of cylinder assembly.



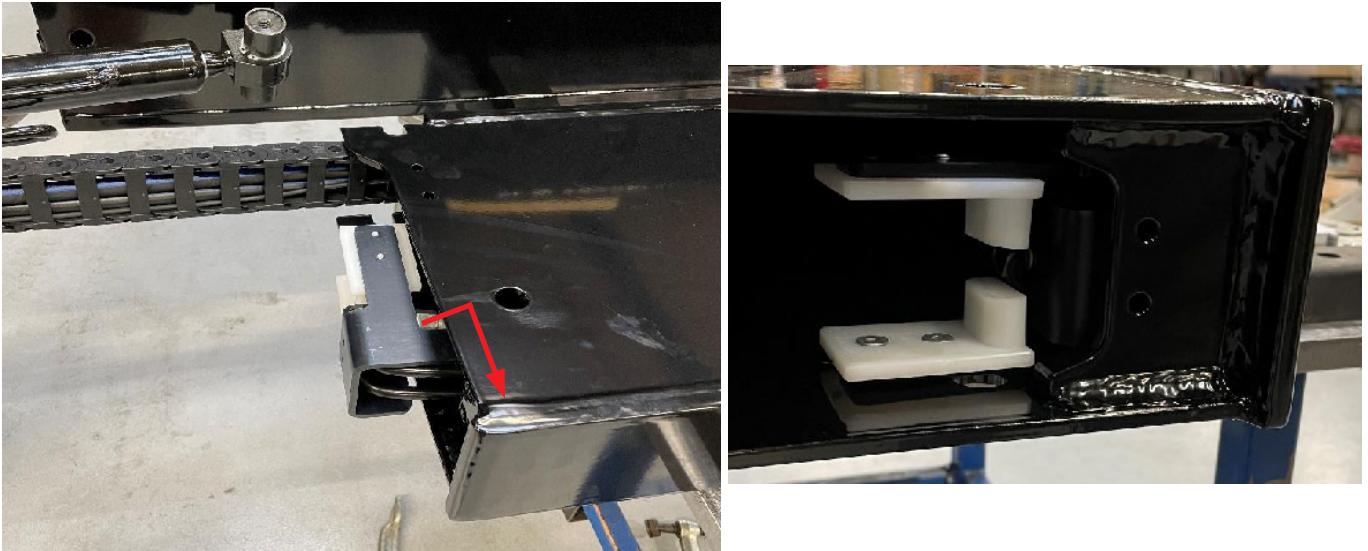
3. Replace steel pipe.



4. Start inserting cylinder assembly into beam.



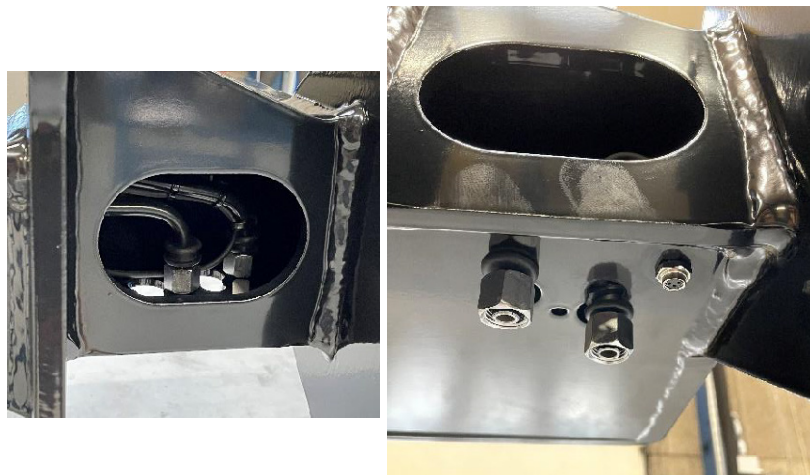
5. Make sure to push illustrated part in and align.



6. Continue installation of cylinder assembly, don't push it all in yet.



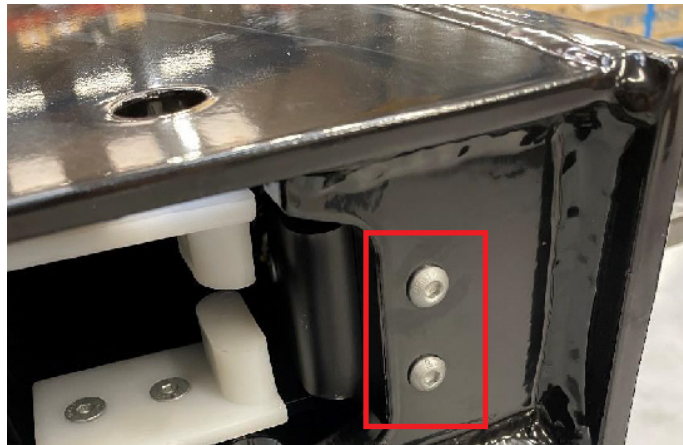
7. In the opposite end push the hydraulic hose and electric plug in correct position. Tighten the electric plug to 0.6 N-m.



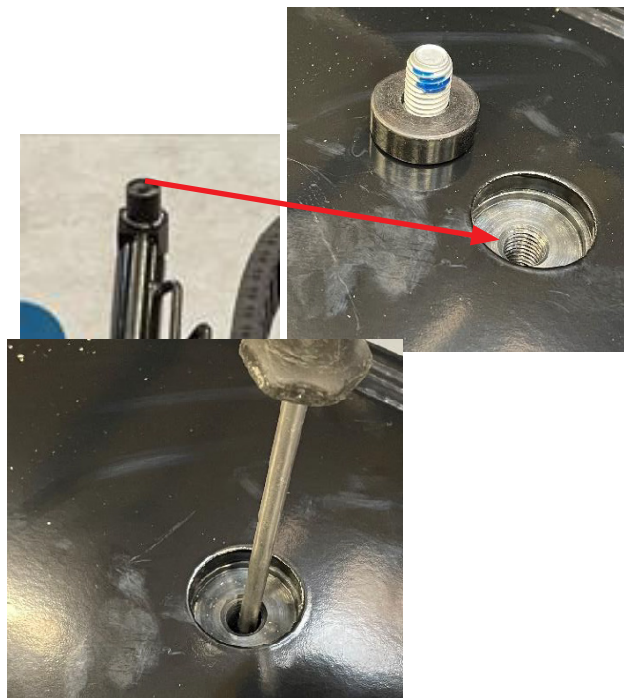
8. Go back to the first end. Apply Loctite 243 to bolts.



9. Align holes and tighten bolts.



10. Push the cylinder assembly further in until it is possible to see below illustrated part through the hole. It might be needed to adjust using a screwdriver or similar.



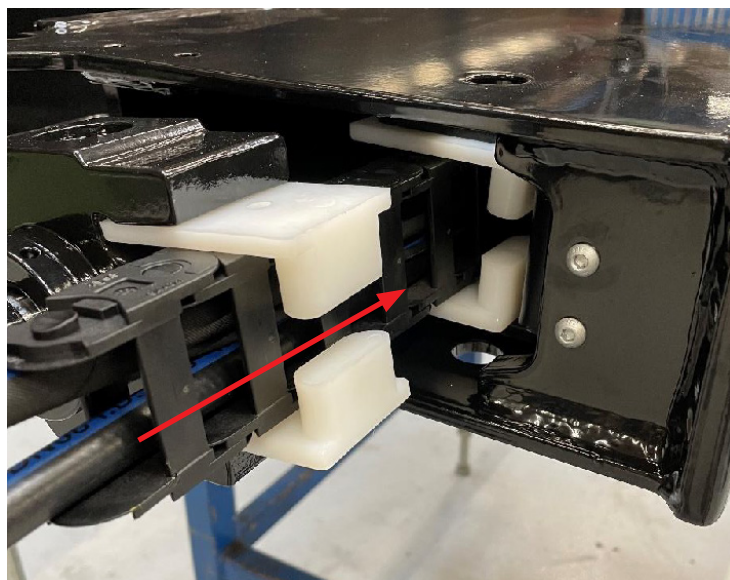
11. Assemble bolt and bushing. Apply LocTite 243 to the bolt. Insert bushing and bolt.
12. Do same procedure on the other side of the beam.



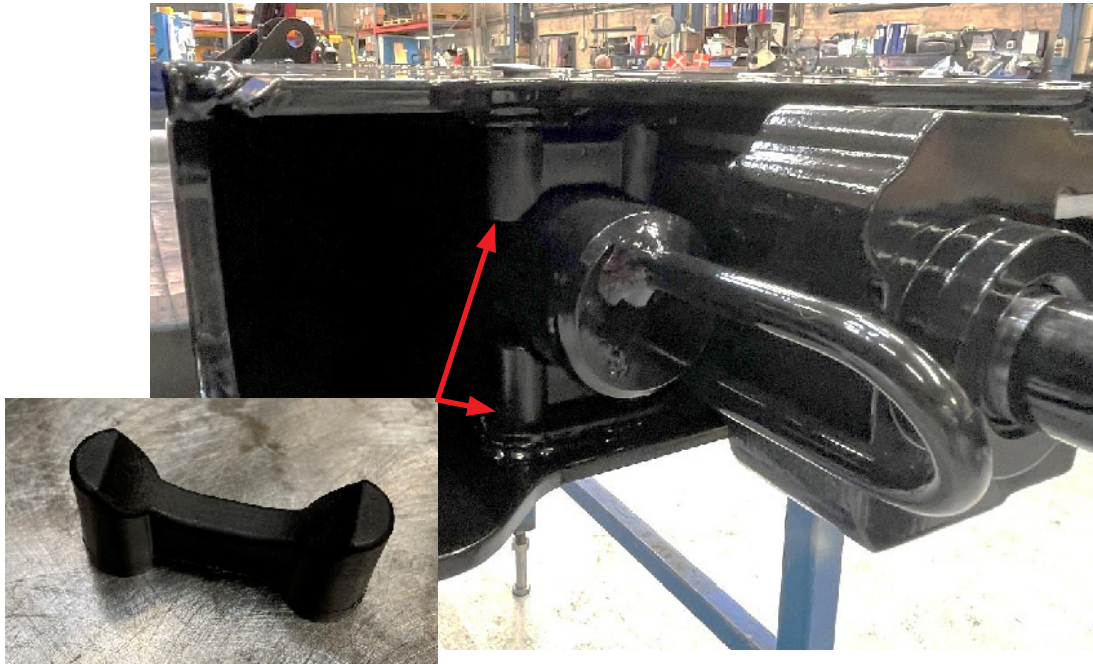
13. It is necessary to tighten both at the same time as illustrated below. Tighten according to specified.



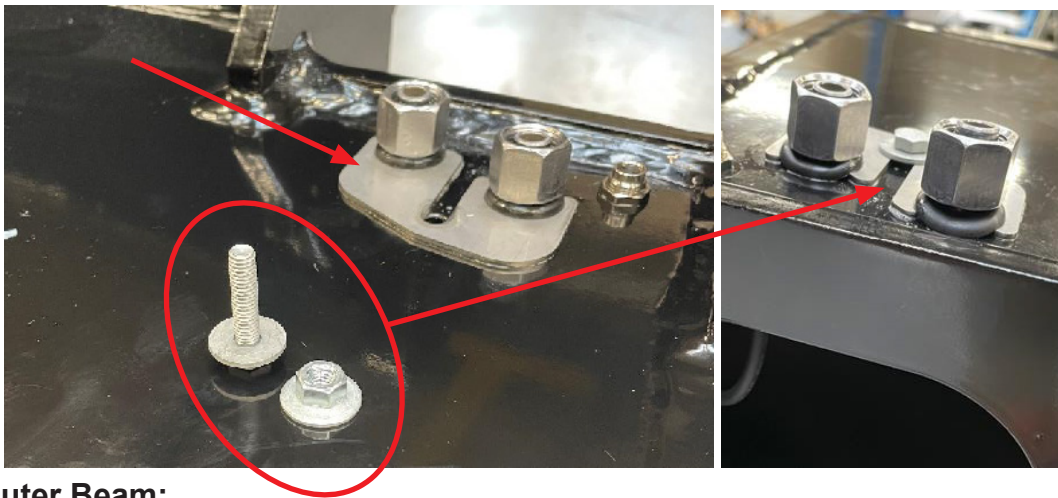
14. Go to the end and push the rest of the cylinder assembly into the beam.



15. Mount brackets (2) with 4 bolts, one bracket on each side. Tighten according to specified.

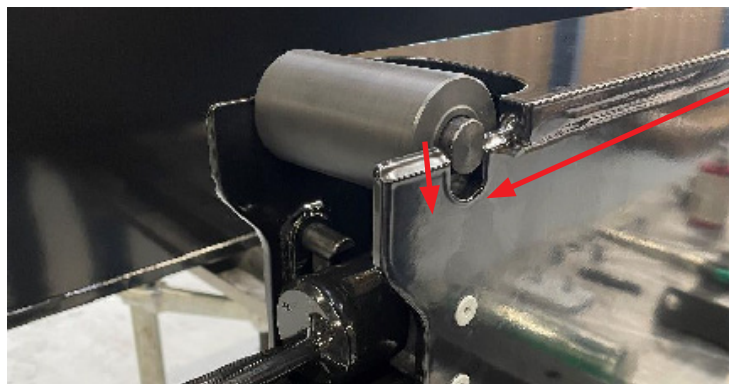


16. Flip the beam 180 degrees.
17. In the other end install plate as illustrated. Install bolt and nut and tighten according to specified.



Assemble Outer Beam:

1. Flip the beam 90 degrees.
2. Install roller.

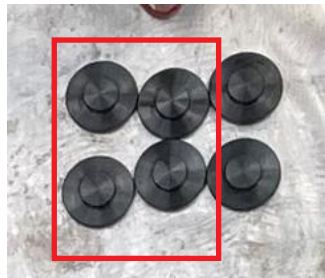


click

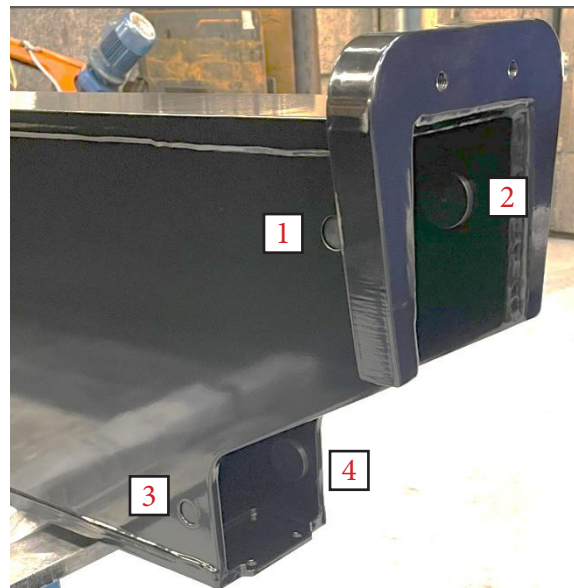
3. Mount plugs for hydraulic housing and plastic plug in electric housing.



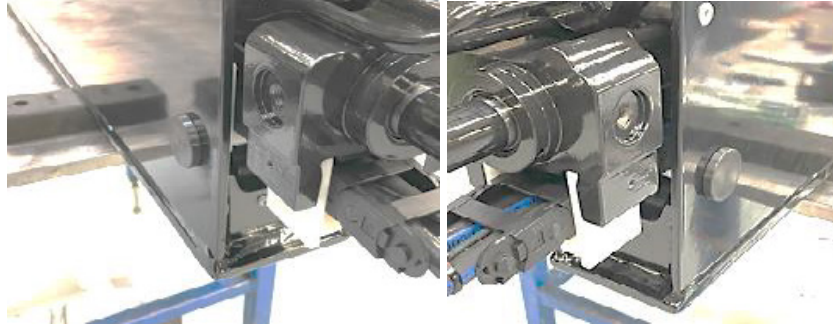
4. Apply grease to the inside of the outer beam and the outside of the inner beam.
5. Apply LocTite 401 glue to 4 of the 6 bushings.



6. Install 4 bushings to the inside of the outer beam.



7. Apply Loctite 401 glue to last 2 bushings.
8. Install the last 2 bushings on the outside of the inner beam.



9. Attach sling to center of beam, approximately 1120mm from endplate.



10. Lift the beam and gently push it inside the outer beam.



11. Push the outer and inner beams together, make sure the end is aligned.
12. Install 2 bushings, tighten according to specified.



13. Pull the inner beam a bit out, 30-40 cm.
14. Use the crane and lift the inner beam.
15. Install bushing and support bracket between bottom of inner and inside the outer beam.



16. Install bolts and washers, tighten according to specified.



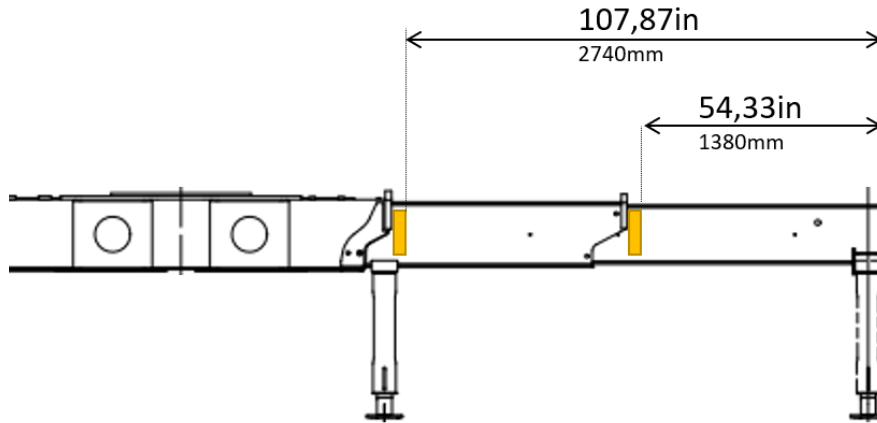
17. Lower the beam by crane.
18. Install top bracket.



19. Install bolts and washers, tighten according to specified.



- 20. Use the crane and gently extract the inner beam from the outer beam.
- 21. Mount stickers according to specified below.



Register Serial Number:

- 1. Please register crane serial number.
 - 2. Register if beam is from Left or Right side.
 - 3. Write down the number as illustrated below. Attach number to beam on a strip of tape, numbering tag or similar.
- Remember to clean area before attaching marking.

IOWA MOLD TOOLING CO., INC. BOX 189, GARNER, IA 50438-0189	
MODEL NUMBER	<input type="text"/>
SERIAL NUMBER	<input style="border: 2px solid red;" type="text"/>
MFG DATE	<input type="text"/>
70029119R	

L= Left Side

