



«Customer»
«Address»
«City», «State» «Zip»

November 2022

*****IMPORTANT SAFETY RECALL*****

*****2022 QUALITY TRAILER*****

Safety Recall Notice/NHTSA Recall 22V824

Your Vehicle Identification Number (VIN): «VIN»

Quality Trailers Ohio, Inc. has been informed of a potential defect that may exist with your 2(5/16)" A-Frame Coupler, which relates to safety, with the VIN shown above.

We apologize for this situation and want to assure you that, with your assistance, we will correct this condition should it exist.

- What is the issue?** On your trailer, it may be possible that the 2(5/16)" A-Frame Coupler was not fully welded by the manufacturer of the coupler. There are 3 welds on the underside of the coupler that may have been tack welded instead of solid welded.
- What is the risk?** The welds on the underside of the coupler could break causing possible disconnect with tow vehicle increasing the risk of a crash.
- What should you do?** Inspect the underside of your coupler without delay. Please see enclosed pictures of both correct and incorrect welds from the manufacturer for reference. **Please contact Quality Trailers at (330) 332-9630** with the results of the inspection. Quality Trailers will instruct you as to how to proceed with your repair should any defects be found.

If you fail to get satisfactory remedy to this defect without charge, or within a reasonable amount of time, you may submit a written complaint to:

Administrator
National Highway Traffic Safety Administration
1200 New Jersey Ave SE
Washington, DC 20590

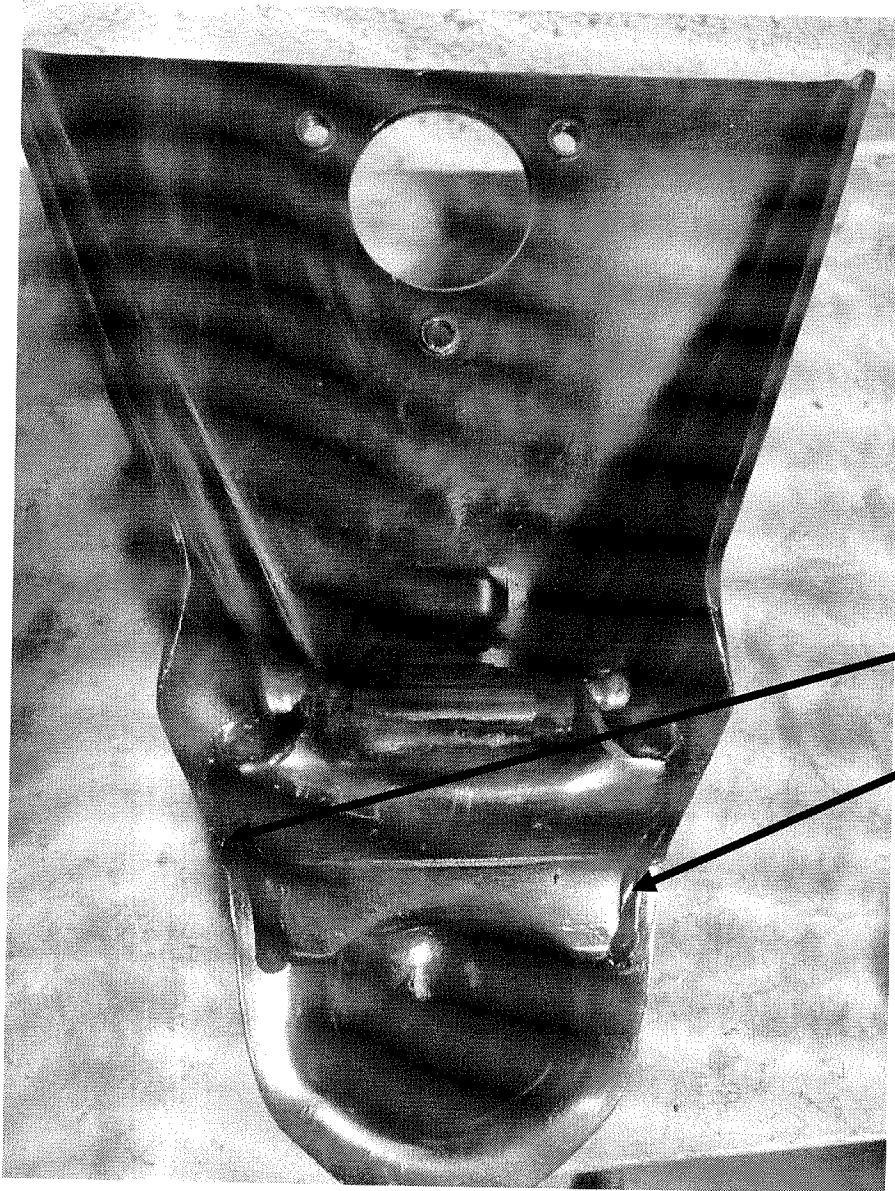
You may also call the toll-free Vehicle Safety Hotline at 1-888-327-4236 (TTY: 1-800-424-9153) or go to <http://www.safercar.gov>

We apologize for any inconvenience and thank you for your attention to this safety matter.

Sincerely,
Quality Trailers Ohio, Inc.

**Product Bulletin
CA-5400-O/B/Z
14K RAM A-Frame Couplers with
QC#GTR202107XX Placard Date**

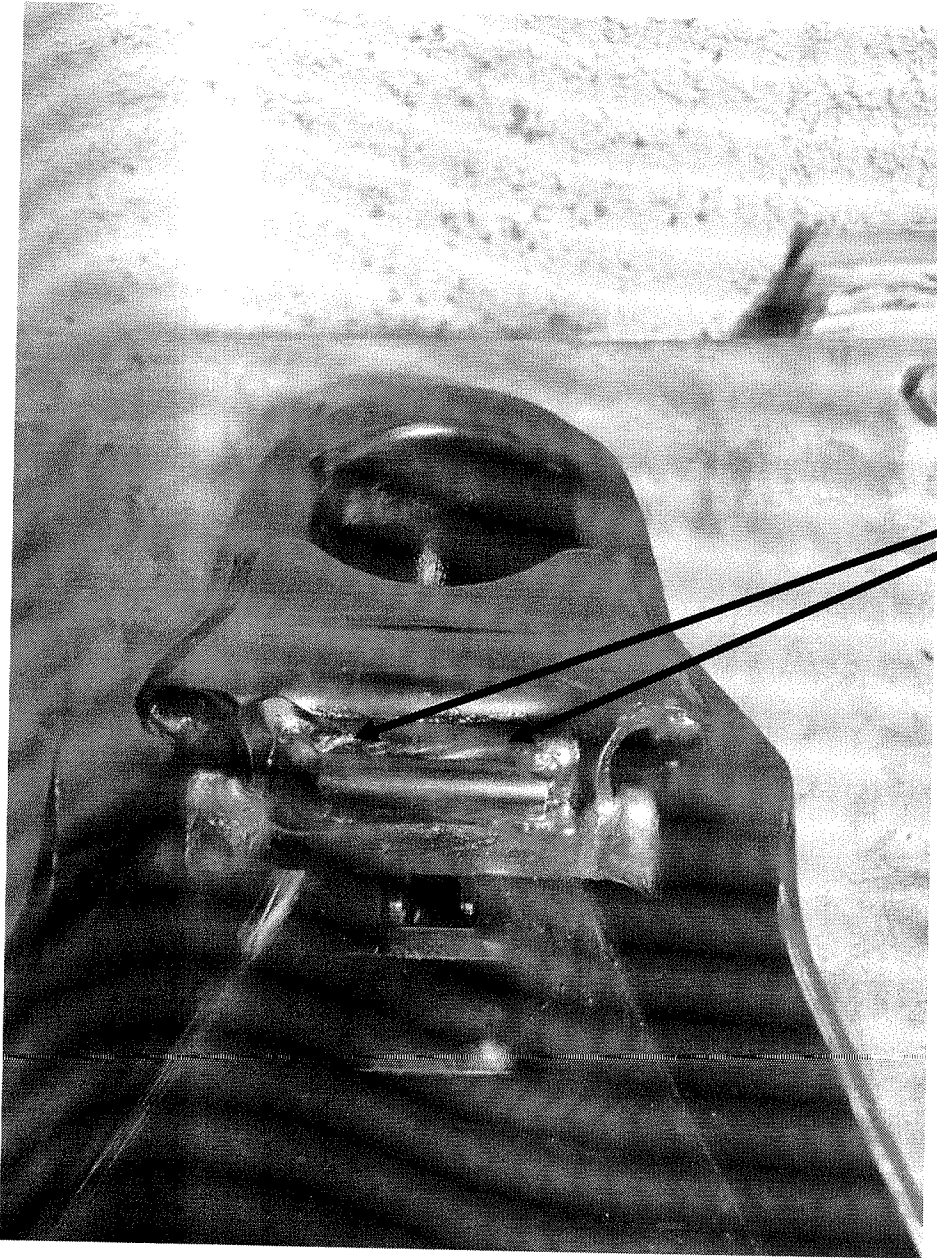
Check for coupler welds on bottom side of coupler.



Normal Welds On Coupler up
the entire length of the bottom
ball clamp

**Product Bulletin
CA-5400-O/B/Z
14K RAM A-Frame Couplers with
QC#GTR202107XX Placard Date**

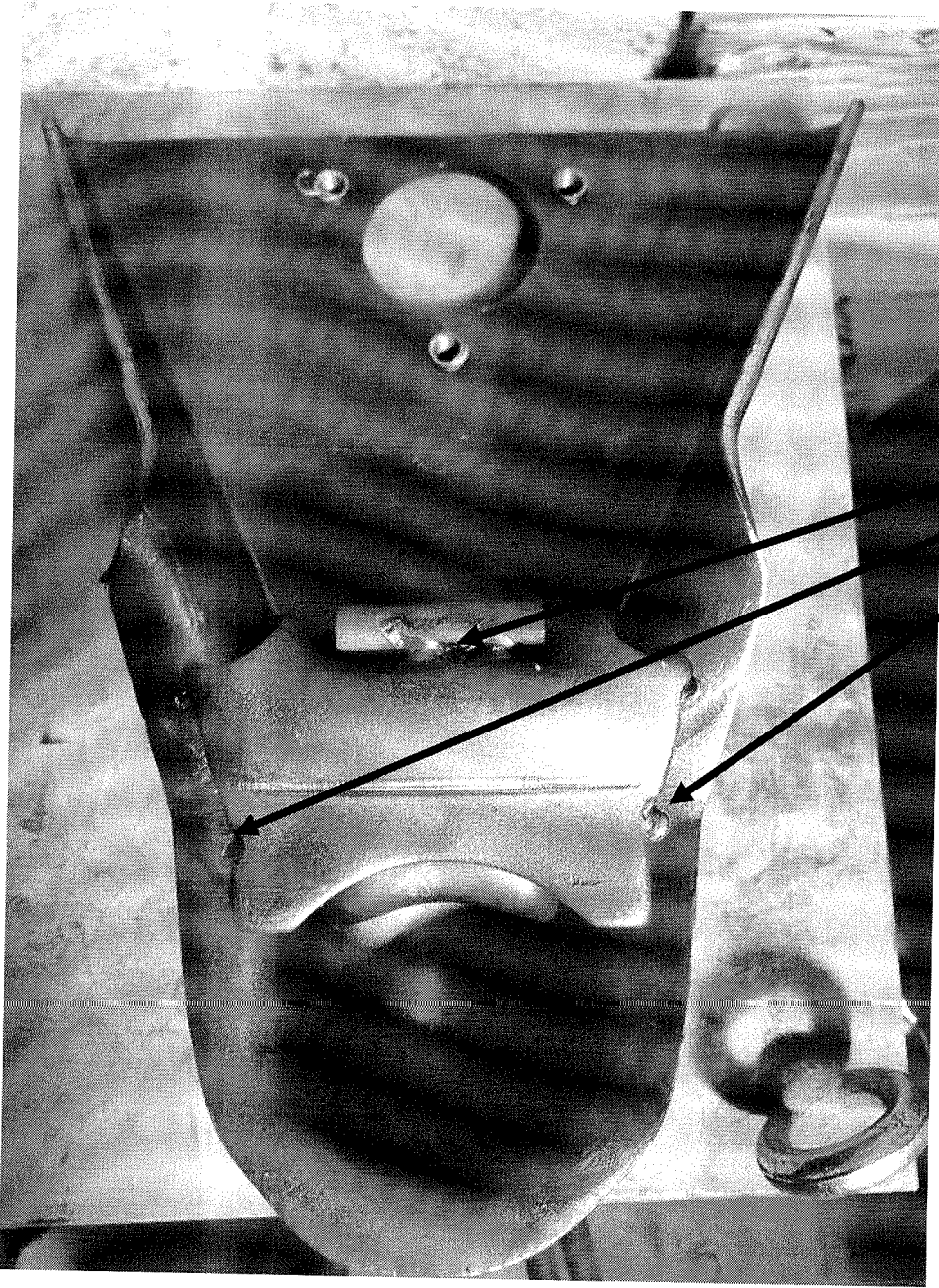
Check for coupler welds on bottom side of coupler.



Normal Welds On Coupler the
entire length of the back side
of bottom ball clamp

**Product Bulletin
CA-5400-O/B/Z
14K RAM A-Frame Couplers with
QC#GTR202107XX Placard Date**

Check for coupler welds on bottom side of coupler.



If any spot welds like on this coupler, these need to be pulled out of inventory and not used.