

Original Publication Date: November 10, 2022

To: All Toyota Dealer Principals, General Managers, Service Managers, and Parts Managers

EQUIPMENT RECALL 22TH01 (Notice)

**Defective Seatbelt Retractor Force Limiter
Dealer Parts Inventory Inspection Procedure**

Background

On November 10, 2022, Toyota filed an Equipment Safety Recall regarding certain front seat belt service parts. A component in the subject front seat assemblies may not have been manufactured properly and may cause the seat belt to not operate as designed. This can increase the risk of an injury in the event of certain types of crashes.

Toyota dealers are requested to inspect their current parts inventory for the parts listed below. If any of the following parts are found, please take a photo of the box label with lot number and send to quality_compliance@toyota.com.



Under Title 49, Section 30112 of the United States Code, a dealer cannot sell, offer for sale, or introduce or deliver for introduction in interstate commerce a new motor vehicle or any new or used item of motor vehicle equipment when it is aware that the vehicle or equipment does not comply with an applicable Federal Motor Vehicle Safety Standard or contains a defect related to motor vehicle safety. Further, 49 Code of Federal Regulations §577.13 requires us to provide the following advisory: It is a violation of Federal law for a dealer to deliver a new motor vehicle or any new or used item of motor vehicle equipment (including a tire) covered by this notification under a sale or lease until the defect or noncompliance is remedied.

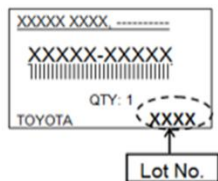
In addition, Toyota is working with our dealer network to identify potential end users of any sold parts. You may be contacted, and your support is appreciated.

Involved Part Numbers

Part Number	Affected Lot #	Description
73210-24171-A0	2E**/ 2F**/ 2G**/ 2H**/ 2I**	Belt Assy, Outside, RH (or LH)
73210-48130-A0		Belt Assy, Outside, RH (or LH)
73210-48130-B0		Belt Assy, Outside, RH (or LH)
73220-24131-A0		Belt Assy, Outside, RH (or LH)
73220-24131-C0		Belt Assy, Outside, RH (or LH)
73220-33331-C1		Belt Assy, Outside, RH (or LH)
73220-42221-B0		Belt Assy, Outside, RH (or LH)
73220-47051-B0		Belt Assy, Outside, RH (or LH)
73220-48040-A0		Belt Assy, Outside, RH (or LH)
73220-48052-A0		Belt Assy, Outside, RH (or LH)
73220-48110-A0		Belt Assy, Outside, RH (or LH)
73220-48110-B0		Belt Assy, Outside, RH (or LH)

Inspection Procedure

1. CONFIRM PART NUMBER IS IN PARTS LIST
2. IDENTIFY THE LOT NUMBER (4 digits) ON THE LABEL ON THE OUTSIDE OF THE BOX



3. DETERMINE IF THE LOT # IS FROM THE AFFECTED LOT BY CHECKING THE FIRST TWO DIGITS OF THE LOT NUMBER AND COMPARING TO THE AFFECTED LOT # IN THE TABLE ABOVE.

< Lot No. of NG parts > Lot No. consists of 4 digit

2E** / 2F** / 2G** / 2H** / 2I**

(Until 2D & from 2J are OK parts)

ex.) 2 = Year (1: 2021, 2:2022)

E = Month (A: Jan., H: Aug., I: Sept., ---)

** = Any number or alphabet

- a. IF LOT # **IS NOT** FROM THE AFFECTED LOT, NO FURTHER ACTION IS NEEDED
 - b. IF LOT # **IS** FROM THE AFFECTED LOT, PROCEED TO STEP 4
4. TAKE A PHOTO OF THE BOX LABEL WITH LOT NUMBER (4 digits) AND EMAIL PHOTO TO quality_compliance@toyota.com