

SOP05532

QAAR 9949 Entry Assist Handle Wire

Routed too Close to Fridge Exhaust Flue.

Department: 32

People Required: 1

Time to Complete: 6:30

Date Created: 8-16-21

Date Revised: 8-26-21

Created by Initial: GK806

Rev #: rev1

Verified: BH



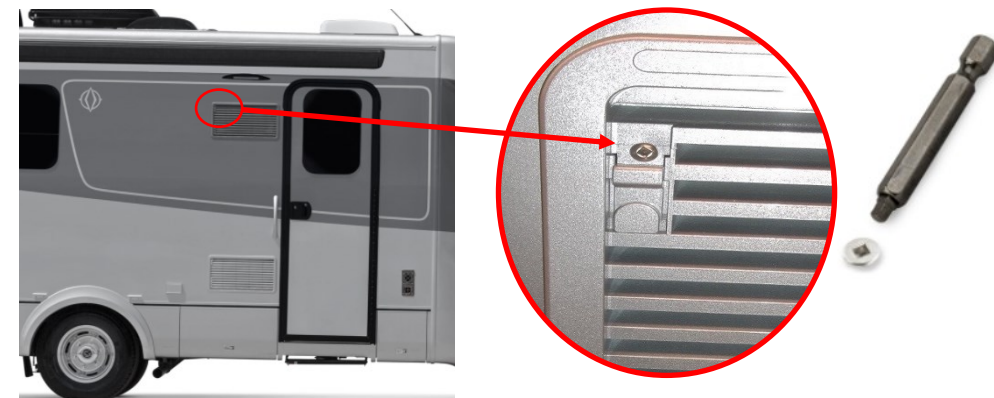
Tools Needed:

1. Step Ladder
2. #2 Robertson (square drive) screwdriver

Provided in kit:

1. 75mm (3 inches) of Foil Tape
2. Repair Instructions.

1



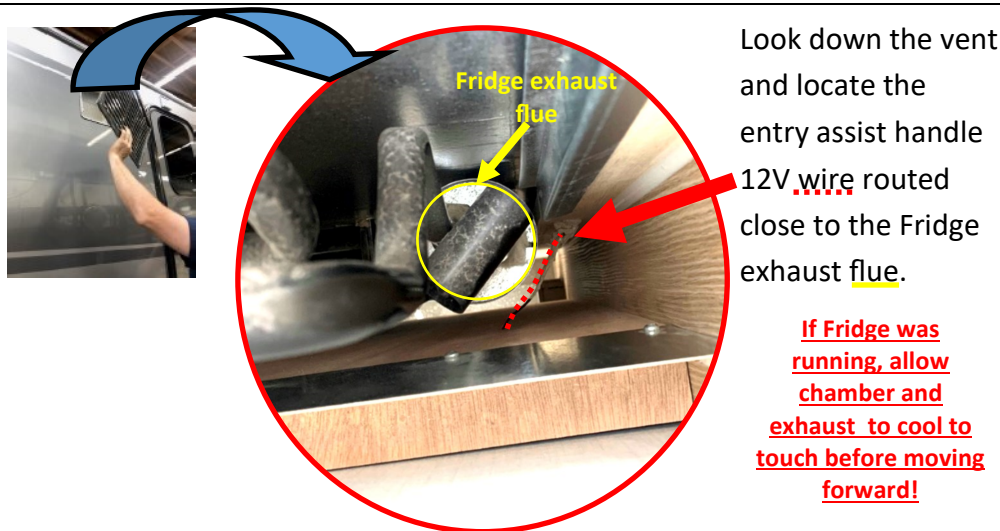
Remove the #8 screw from the top corner of the upper fridge cover using a #2 Robertson bit put aside for later.

2



Lift both tabs up and remove vent by pulling on the left side of the vent and then sliding it out. Set vent aside.

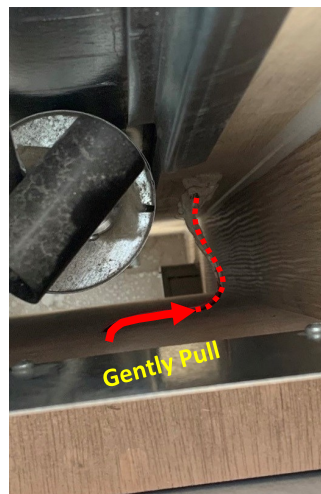
3



Look down the vent and locate the entry assist handle 12V wire routed close to the Fridge exhaust flue.

If Fridge was running, allow chamber and exhaust to cool to touch before moving forward!

4

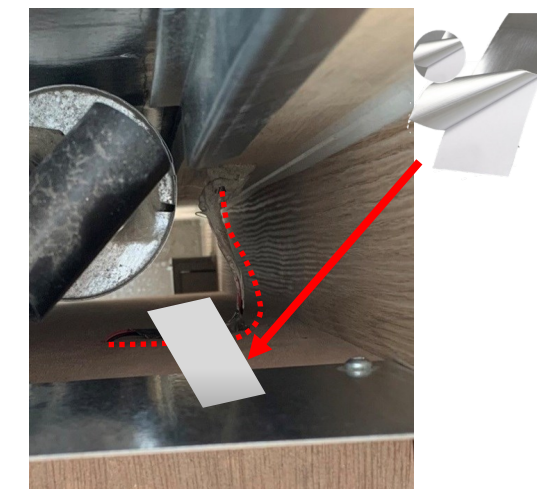


Reach in and with your hand, move the wire away from the exhaust flue by pulling from the outer wall.

CAUTION!!!

Do not pull extra wire from the fridge side or you will dislodge the seal around the wire. If seal is damaged, the fridge may need to be removed to reseal the wire.

5



Remove the backing from the foil tape and secure the wire against the outer wall, away from the fridge flue.

There should be a minimum of 25mm (1 inch) space between the flue and the wire.

6



Reinsert the vent cover at an angle with the front of the vent first then the back.
The tabs on the vent frame need to line up with the slots in the cover. Failure to engage the clips in the vent can allow it to be caught by wind when driving causing a failure.

7



Push both sliding clips down and fasten the vent cover through the original hole with the original screw.

8

9