

Recall Recheck Instructions

NHTSA Recall #: 21V-514

Tiffin Recall #: WAY-100

Models Involved: 2017, 2018, 2019, 2020, & 2021 all floor plans with standard wheels

Tools Needed:

- 19 mm ½" Drive 6-Point Socket
- 21 mm ½ Drive 6-Point Socket
- Phillips Screwdriver

Tools Needed for Air Valve Extensions:

- 7/16" Wrench
- 1/2" Wrench

FLAT RATE CODES AND TIMES

When filing the warranty claim for payment, please use the following flat rate codes and times.

WF8806RC01 – check and correct wheel torque and check the installation of the valve stems, 0.50 hours

WF8807RC01 – If needed, correct the installation of the valve stems, an additional 0.50 hours

If needed a copy of the installation instructions can be requested from keri.vaughn@tiffinmotorhomes.com

Procedure:

Remove the wheel liners from the wheels and verify the torque specifications for the installation and verify and correct if needed the installation of the valve stem extensions.

Front Wheels

1. Remove the wheel liners from the front wheels.
2. The wheel lug nuts were removed so that the factory plastic hubcaps could be removed. All wheel lug nuts will need to be checked and corrected to **177 ft lbs.** (See Fig. 1A & 1B)



Figure 1A



Figure 1B

3. Check the torque on the install bracket that is used to fasten the wheel liner to the wheel. Verify the two hub bolts on the installation bracket is torqued to **133 ft lbs.** (See Figure 3A, 3B, & 3C).

Figure 3A



Figure 3B



Figure 3C



4. Check that the front air valve extender is installed directly to the tire valve stem and not to any kind of extensions.



Front Tire Valve Stem

5. Remount the front wheel liner to the wheel, making sure to align the two holes in the liner with the two threaded holes of the hub mount bracket. **Note:** also make sure the air valve enlarged hole in the wheel liner aligns with the air valve (See Figure 5A & 5B).

5A: Air valve enlarged hole



5B: Valve stem lined up with air valve enlarged hole.



INSTALLING THE REAR WHEEL LINERS

1. Remove the rear wheel liner.
2. Verify that the torque for the wheel lug nuts is **177 ft lbs.**
3. Verify that the Axle Nuts that were removed to install the rear bracket legs are torqued to **18.5 ft. lbs.** (See Figure 10A & Figure 10B).

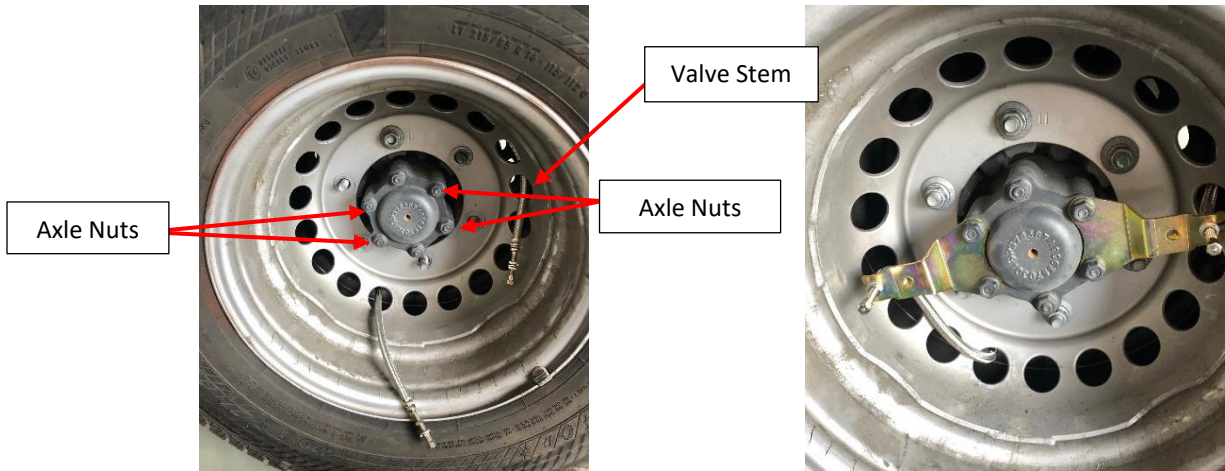


Figure 10A

Figure 10B

4. Verify that both the inner valve stem extension and outer valve stem extensions are installed directly to the tire valve stems and not to any kind of extensions. If the valve stems are not installed directly to the tire valve stem, remove the extensions, and install the valve stem directly to the tire.
5. Reinstall the wheel liner to the bracket legs.

IMPORTANT: After installation, the mounting system will seat itself into the wheel. After the first 100 miles, check that the wheel liners are tight and secure to the wheels. If necessary, retighten the mounting screws. We recommend that the wheel liners are checked and inspected periodically to make sure that they are tight and secure to the wheels. Please inform the owner to check the wheel liner installation after the first 100 miles.