



## ADDENDUM TO INSTRUCTIONS TO PERFORM RECALL CAMPAIGN 165

---

**Models Affected**      2022 EKKO

### **Tools and Parts Required**

Refer to Recall 165 instructions for tool and parts information.

NOTE: Only use the parts supplied in recall kit RC7650-22-765 to complete this repair.

It is important to follow these instructions in the order they are given. These instructions contain 5 pages, work through all steps to ensure a complete remedy is performed. Familiarize yourself with the model you are working on before proceeding.



**ADDENDUM TO INSTRUCTIONS TO PERFORM RECALL CAMPAIGN 165**

---

**Contents of Recall Kit**



## ADDENDUM TO INSTRUCTIONS TO PERFORM RECALL CAMPAIGN 165

**Before applying any sealant, use an isopropyl alcohol to clean any surface to which sealant is to be applied. Allow to flash for 60 seconds.**

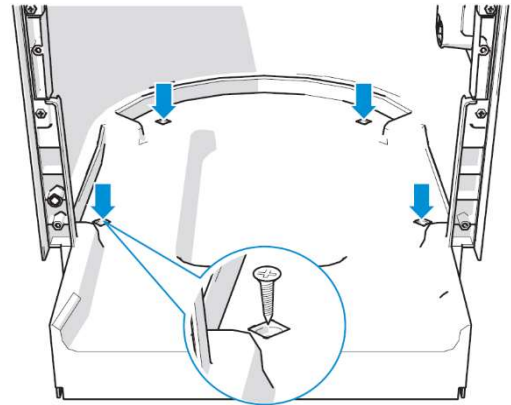
1. In the exterior toilet cassette compartment, loosen the wire clamp securing the toilet wiring so that the wires can be manipulated.



2. Verify the back of the toilet is in tight against the shower wall.



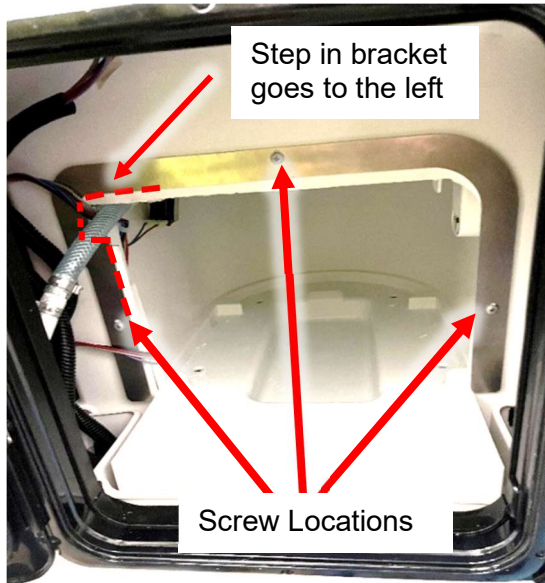
3. If the gap between the shower wall and the back of the toilet is 10 mm or less, move on to step 9.
4. If the gap between the back of the toilet and the shower wall is greater than 10mm, remove the four screws securing the toilet. Access the screws through the outside tank compartment door. The toilet cassette will need to be removed. Set aside for reinstallation of the toilet.



5. While keeping the toilet connected to wires and plumbing, move it out of the way. This will provide access to the screw holes from step 3 from the outside.
6. Fill the old screw holes with silicone to seal the shower pan.
7. Set the toilet back into place and reposition the toilet so that it is tight to the wall.
8. Secure the toilet into place in the new location using the previously removed screws. The toilet manufacturer recommends torquing the screws to 1.2 +/- 0.3 N-m (10.6 +/- 2.6 lb-in).

## ADDENDUM TO INSTRUCTIONS TO PERFORM RECALL CAMPAIGN 165

9. Temporarily place the new toilet bracket into place. The bracket is self-locating within the tank compartment.



10. Using the toilet bracket as a template, mark the screw locations.

11. Remove the toilet bracket and use a 3/8" drill bit to create a hole for the screws in the shower surround. Temporarily use a plate behind the shower surround to keep from drilling into the toilet.

12. Put the convoluted conduit onto the left-inside edge of the bracket to protect the wires and water lines.



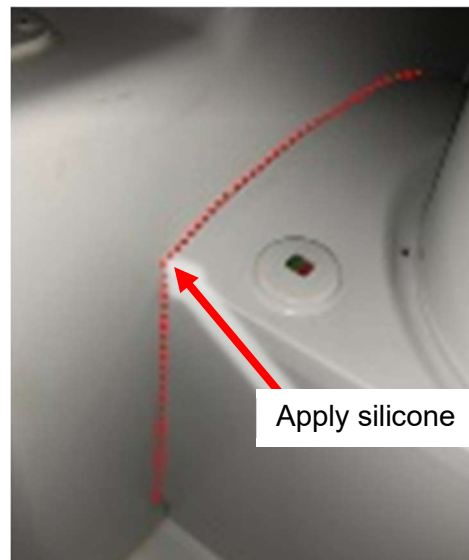
13. Put the toilet bracket into place.

14. Screw the bracket into place using the three provided 10x3/4 Pan Head screws. Torque the screws to 0.9 N-m (8.0 lb-in).

15. Resecure the wire clamp from step 7.

16. Reinstall the toilet cassette.

17. On the inside of the coach, apply silicone around the top and rear side of the toilet.



18. With the pivoting wall in the showering position, remove the screw at the base of the pivoting wall.



## ADDENDUM TO INSTRUCTIONS TO PERFORM RECALL CAMPAIGN 165

19. Fill the hole for the screw with silicone.
20. Reinstall the screw.
21. With the pivoting wall in the lavatory position, remove the screw at the base of the pivoting wall.



25. Apply and backfill corners formed by the shower surround panel joints with sealant.

22. Fill the hole for the screw with silicone.
23. Reinstall the screw.
24. Apply and backfill around the base of the pivoting wall with sealant.



**If you have any questions regarding this recall remedy, please contact Winnebago Technical Assistance at 1-866-653-4329.**