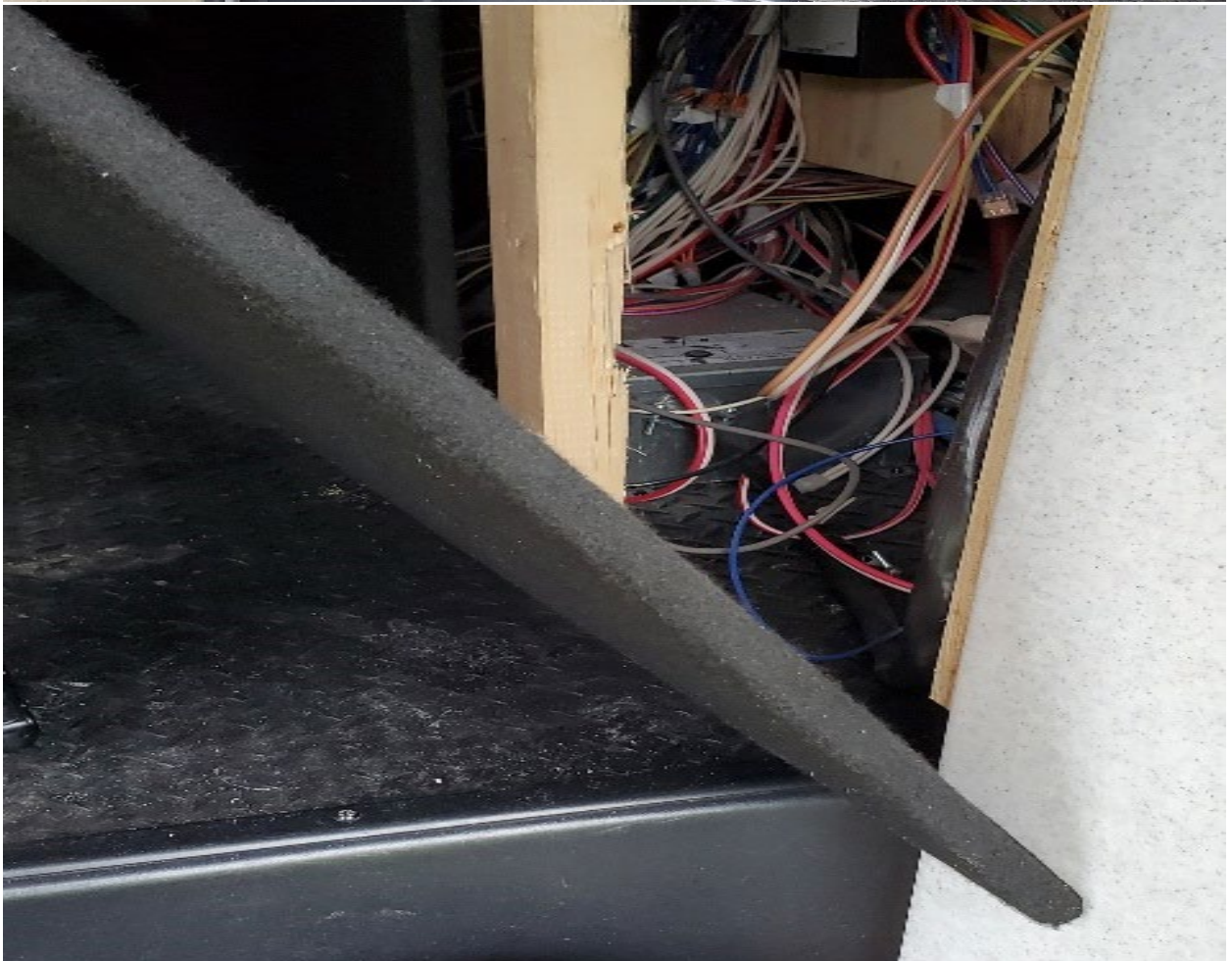


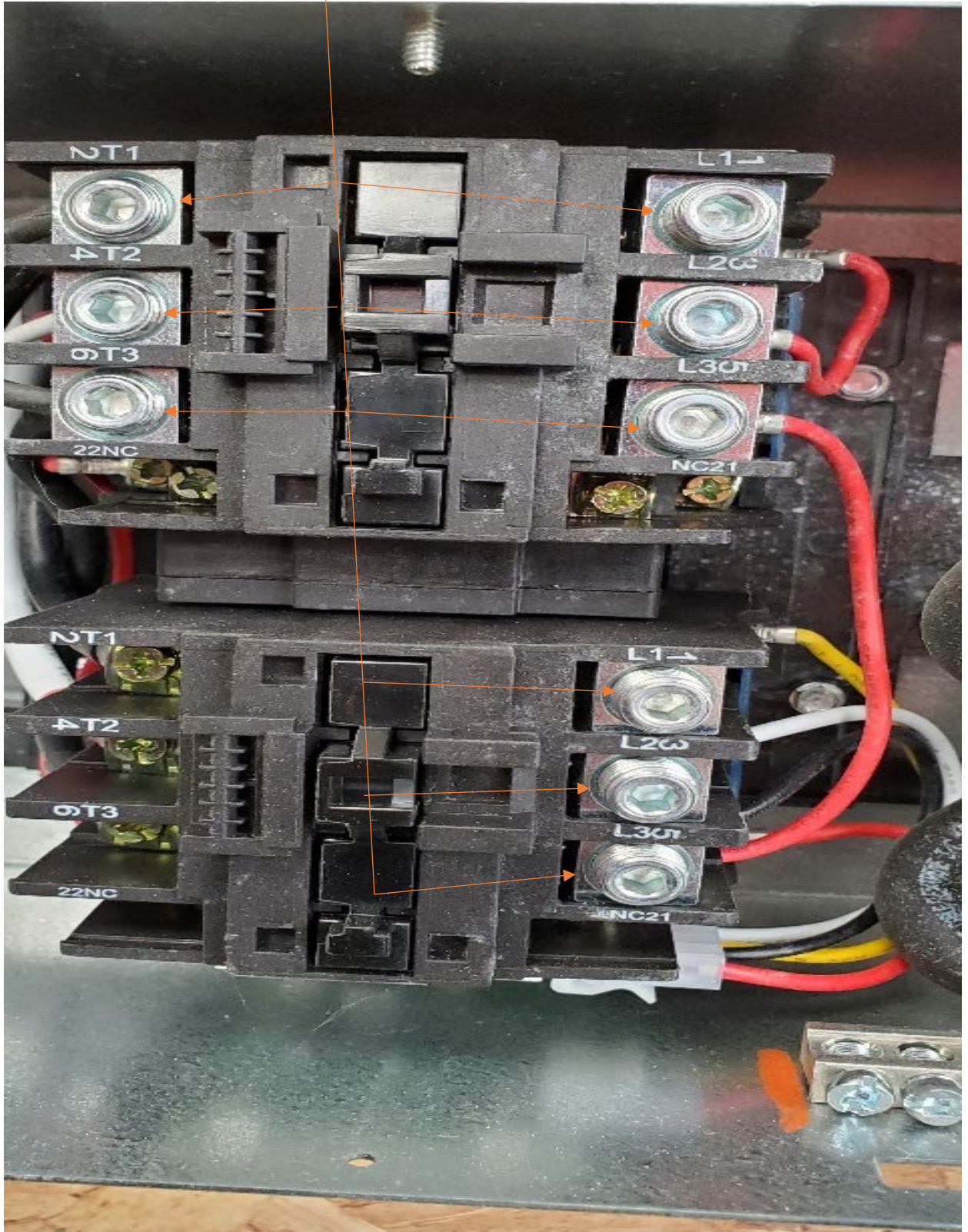
1. Disconnect shore power. Turn battery disconnects to the off position.



- Once access has been gained to transfer switch, remove cover using a 1/4" socket to loosen set screw.



- Once cover has been removed from the transfer switch using an in.lbs torque screwdriver /wrench tighten each conductor lug to the specified torque indicated on the inside of the transfer switch cover or in the installation instructions.



- 5. Torque specs listed on the inside of the transfer switch cover.

SHORT CIRCUIT WITHSTAND & CLOSING RATINGS
 This transfer switch is suitable for use in a circuit capable of delivering the short-circuit current for the maximum voltage marked below. When protected by a circuit breaker, the circuit breaker upstream shall not include a short time trip response.

SHORT CIRCUIT RATING
 5000 AMPERES @ 240 VAC

This transfer switch does not include short-time ratings.

TIME DELAY 20-45 Seconds (voltage must exceed 90V) GENERAL LOADS

Continuous load current not to exceed 100% of switch rating.

EQUIPMENT BONDING LUG
 CU 4-14

LOAD

HOT 1 NEU HOT 2

HOT 1 NEU HOT 2

HOT 1 NEU HOT 2

GENERATOR

HOT 1 NEU HOT 2

SHORE LINE

HOT 1 NEU HOT 2

120/240VAC 50A MAX.

SPECIFIC CIRCUIT BREAKER MFG & TYPE LISTING,
 When protected by a circuit breaker of the specific manufacturer, type and ampere rating as marked below, this switch is suitable for use in circuits capable of delivering the short-circuit current at the maximum voltage marked

MFG	TYPE	RATING
SQUARE D	QJO-2P	50A

or any circuit breaker with a trip time of .016 seconds or less at 5000A.

L.E.D. IS LIT WHEN GENERATOR POWER IS PRESENT

WIRE RANGE: CU 6-16
TORQUE RATING:
 20 IN-LBS AT CONTACTOR
 USE COPPER WIRE ONLY

Field Wiring:
 Copper Wire 75°

BONDING LUG TORQUE RATING:

4 AWG - 6 AWG	35 IN. LBS
8 AWG	30 IN. LBS
10 AWG - 14 AWG	25 IN. LBS

813055C

Tools Needed

1. Screw gun with number two square bit.
2. 1/4" socket or wrench.
3. IN.LBS torque screwdriver or wrench.
4. 5/32" hex bit.