



# INSTRUCTION TO SERVICE

ITS60840		October 16, 2023
<b>SECTION:</b>	294-Power Cables	
<b>WRITTEN BY:</b>	Aditya Gadepalli	
<b>SUBJECT:</b>	Legacy D Battery Charger Rework-MDP Replacement with Fuse Holders	
<b>ISSUE:</b>	ITS 60283 released to replace the MDP with fuse holders on legacy D coaches doesn't include rework steps for battery charger cables.	
<b>SUMMARY:</b>	If the coach is equipped with battery charger, perform this ITS in addition to ITS 60283.	

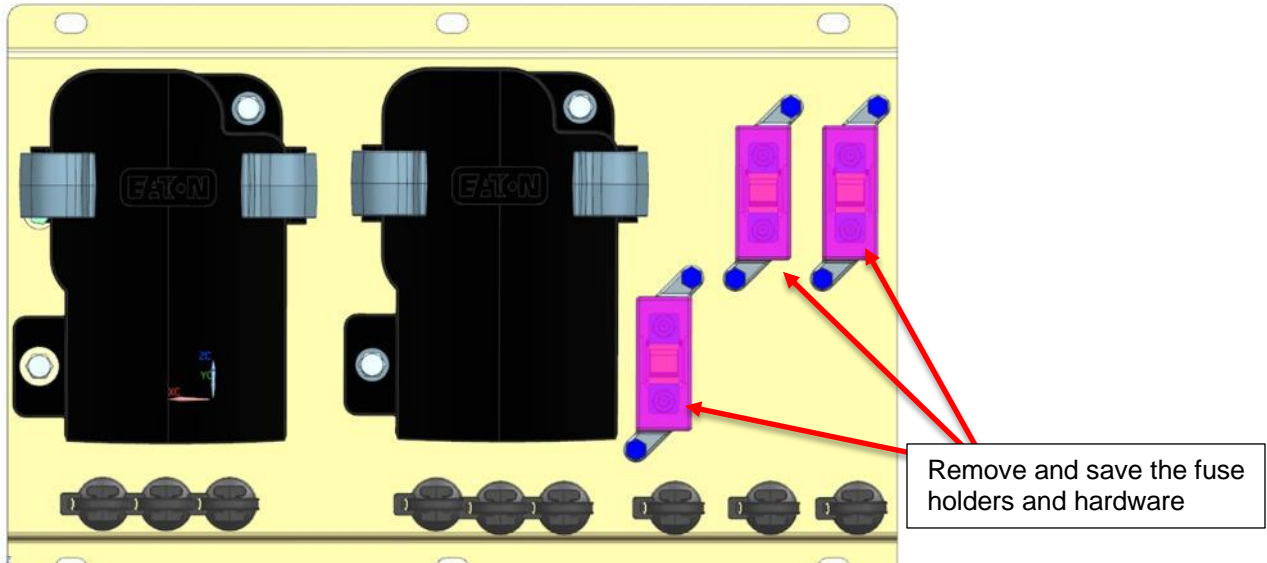
# ITS60840

Ref. NHTSA Recall No.	Ref. Transport Canada Recall No.
21V-748	2021-595

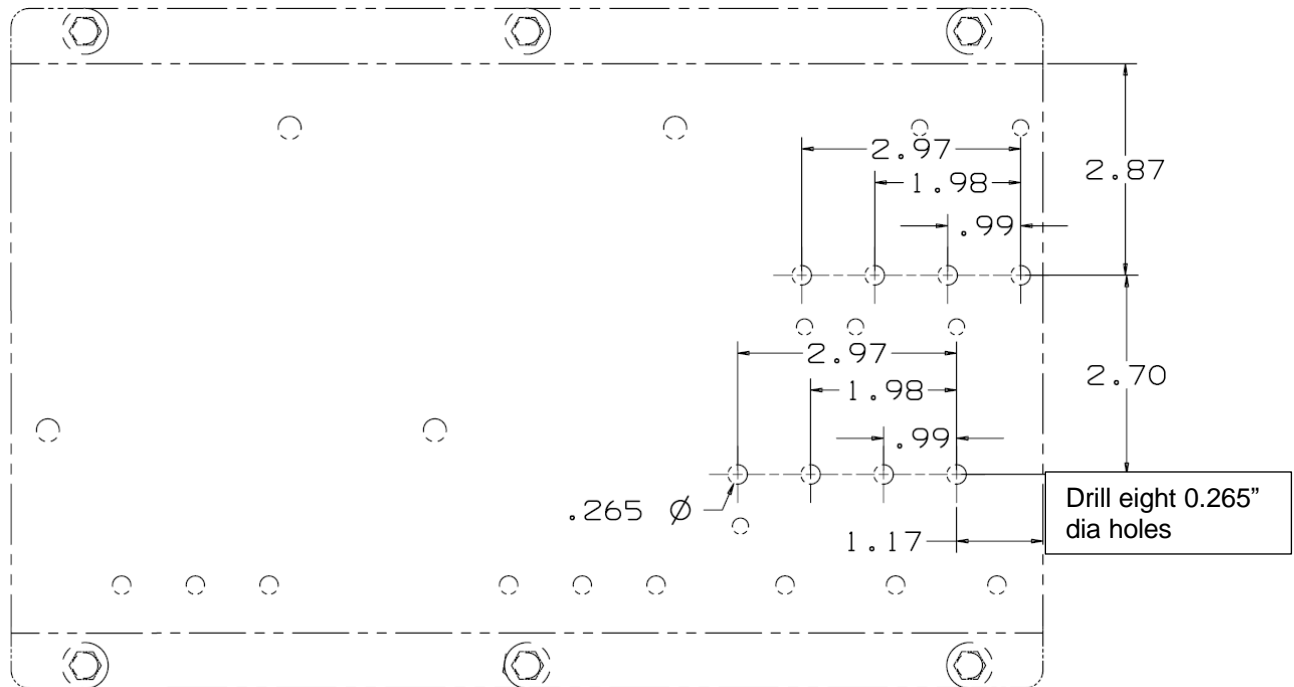
**THIS ITS DOCUMENT SHOULD BE RETAINED AND REFERRED TO FOR FUTURE MAINTENANCE UNTIL THE PARTS AND/OR SERVICE MANUAL IS UPDATED TO REFLECT WORK DONE AS A RESULT OF THIS DOCUMENT. ENSURE THAT THIS DOCUMENT IS AVAILABLE FOR PARTS AND MAINTENANCE STAFF GOING FORWARD.**

**PROCEDURE:**

1. Set park brake and chock wheels.
2. Turn the main battery disconnect switch to the "OFF" position.
3. Remove and save the screws securing the 3 LMI fuse blocks in the battery compartment.



4. Using the fuse holders as template, drill eight holes of 0.265" dia, 17/64 drill bit, at the locations shown below.



5. Install Rivnuts, PN: 067558, on all the eight holes.

6. Remove charger power cable that was previously connected to MDP-J45. Remove and discard the ring terminal. Install #10 terminal, PN: 19-11-3763, using solder and heat shrink, PN: 19-11-447.



Strip



Crimp and solder



Apply black 3/4:" dia heat shrink MCI P/N: 19-11-447

7. Remove battery charger jumper cable, PN: 07-12-1767, and cut the 1/2" ring terminal. Install #10 terminal, PN: 19-11-3763, using solder and heat shrink, PN: 19-11-447.



Strip

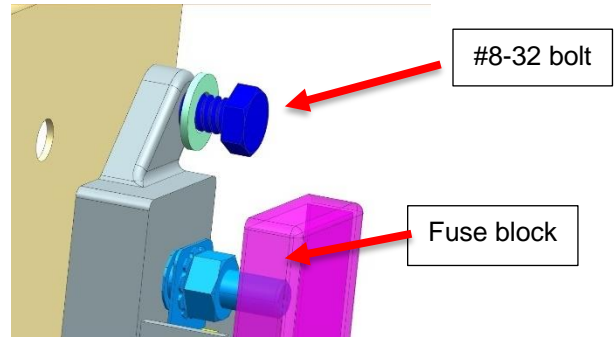
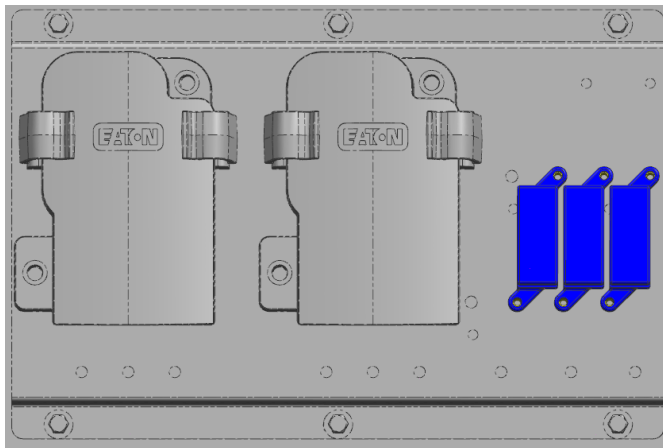


Crimp and solder

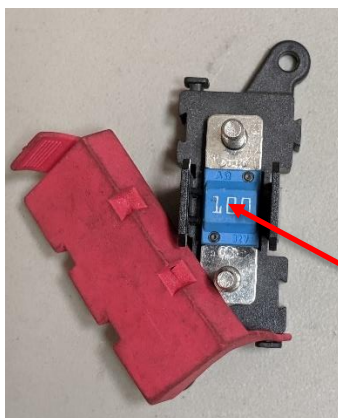


Apply black 3/4:" dia heat shrink MCI P/N: 19-11-447

8. Install three existing LMI fuse blocks to the outboard locations of the newly installed rivnuts using existing screws.

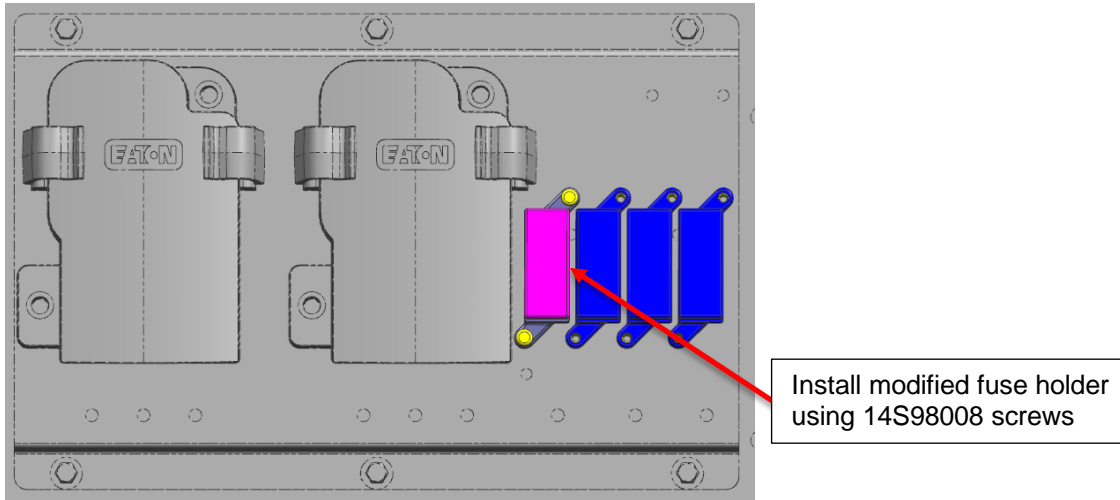


9. Install a 50A fuse, PN: 07-08-5846, to a new LMI fuse holder, 944754.

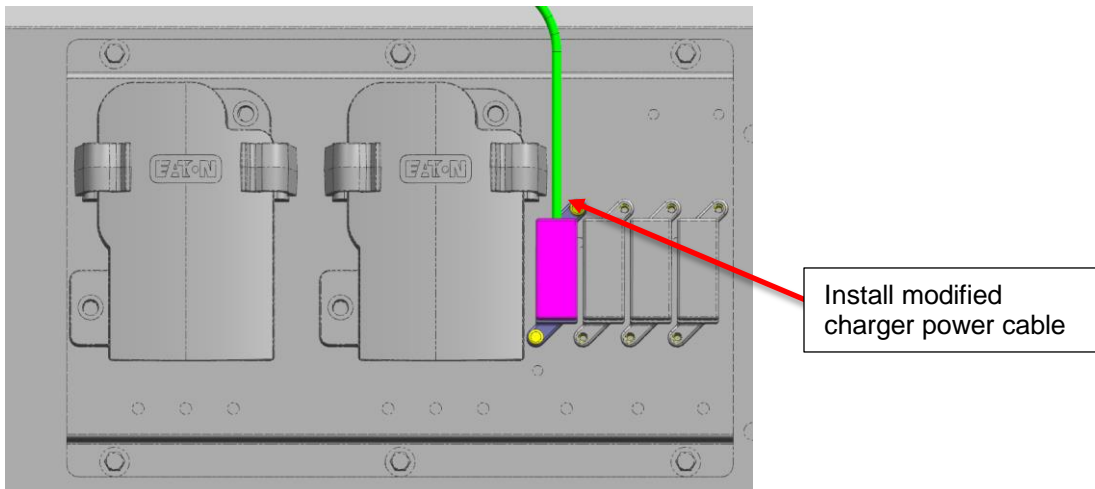


Install 50A fuse

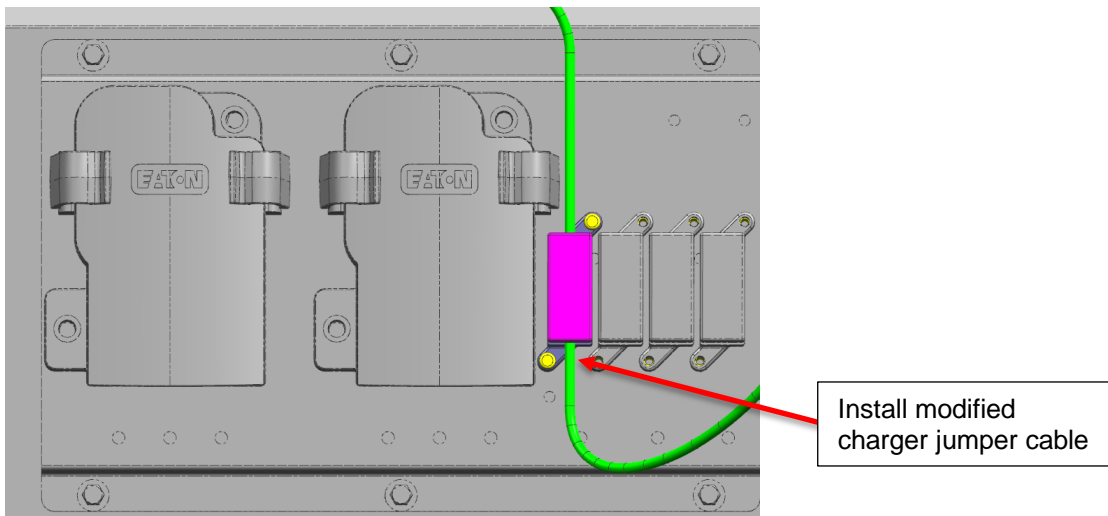
10. Install modified fuse holder to the bracket using screws, PN: 14S98008.



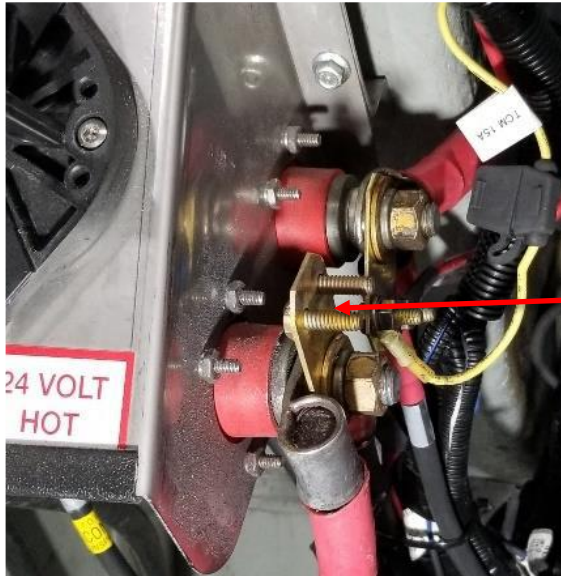
11. Connect the modified charger power cable to the top of the new fuse holder and torque the nut to 39.8 In-Lbs.



12. Connect the modified charger jumper cable to the bottom of the new fuse holder and torque the nut to 39.8 In-Lbs.



13. Connect the other end of the charger jumper cable (side with 1/4" ring terminal) to the 24V hot busbar and torque the nut to 65 In-lbs.



Install charger jumper  
cable to 24V HOT busbar



LABOUR ESTIMATE				
	Operation	Number of Technician(s)	Hours	Labor Time T X HR
1	Legacy D Battery Charger Rework-MDP Replacement with Fuse Holders	1	1	1

PARTS REQUIRED					
Item	Part Number	Description	Qty. per Coach	Units	Notes
1	07-08-5846	Fuse - AMI, 50A	1	EA	
2	14S98008	Screw Machine 1/2	2	EA	
3	19-11-3763	Ring Term - #10,4AWG	2	EA	
4	19-11-40	Terminal-Ring,Tongue	1	EA	
5	067558	Insert-#8-32 UNC AL	8	EA	
6	944754	Block-Fuse AMI	1	EA	
7	19-11-447	Heat Shrink Tube 3/4 ID X 1 1/4"	1	FT	

SPECIAL TOOLS REQUIRED					
Item	Part Number	Description	Qty.	Units	Notes
1					