



RECALL CAMPAIGN BULLETIN

Classification:	Reference:	Date:
BT21-018	NTB21-089	September 23, 2021

VOLUNTARY SAFETY RECALL CAMPAIGN 2022 PATHFINDER; DRIVER SIDE 2ND ROW CAPTAIN'S CHAIR SEAT FRAME INSPECTION

CAMPAIGN ID #: PC845
APPLIED VEHICLES: 2022 Pathfinder (R53)

**Check Service COMM or Dealer Business Systems (DBS)
National Service History to confirm campaign eligibility.**

NOTE: This bulletin only applies to the driver (LH) side 2nd row captain's chair seat assembly.

INTRODUCTION

Nissan is conducting this voluntary safety recall campaign, on certain specific model year 2022 Pathfinder vehicles, to inspect and, if necessary, replace the driver (LH) side 2nd row captain's chair seat assembly. This service will be performed at no charge to the customer for parts or labor.

IDENTIFICATION NUMBER

Nissan has assigned identification number PC845 to this campaign. This number must appear on all communication and documentation of any nature dealing with this campaign.

DEALER RESPONSIBILITY

It is the dealer's responsibility to check Service COMM or Dealer Business Systems (DBS) National Service History for the campaign status on each vehicle falling within the range of this voluntary safety recall which for any reason enters the service department. This includes vehicles purchased from private parties or presented by transient (tourist) owners and vehicles in a dealer's inventory. **Federal law requires that new vehicles in dealer inventory which are the subject of a safety recall must be corrected prior to sale. Failure to do so can result in civil penalties by the National Highway Traffic Safety Administration.** While federal law applies only to new vehicles, Nissan strongly encourages dealers to correct any used vehicles in their inventory before they are retailed.

Nissan Bulletins are intended for use by qualified technicians, not 'do-it-yourselfers'. Qualified technicians are properly trained individuals who have the equipment, tools, safety instruction, and know-how to do a job properly and safely. **NOTE:** If you believe that a described condition may apply to a particular vehicle, DO NOT assume that it does. See your Nissan dealer to determine if this applies to your vehicle.

REQUIRED SPECIAL TOOL

Each dealer has been shipped one Quick Scan Tool, special tool J-52352.

Additional tools are available from Tech•Mate online: www.nissantechmate.com, or by phone: 1-800-662-2001.



Figure 1

SERVICE PROCEDURE

Seat Frame Weld Inspection

1. Open the LH rear door and fold the 2nd row seat forward to the flat position.
2. Slide the LH 2nd row seat fully forward.

3. Using a finesse stick, disengage the lower seatback cover retainer, as shown in Figure 2.

- a. Starting on the outboard side, carefully separate the lower seatback cover retainer.
- b. Fold the lower portion of the seatback cover downward.

CAUTION

To avoid the risk of minor personal injury or property damage, use the recommended tool while performing this procedure, as there is a sharp edge under the lower seatback cover.



Figure 2

4. Lift the lower portion of the seatback cover out from the seatback frame slot, as shown in Figure 3.



Figure 3

5. Carefully disengage the hook and loop fasteners and the seatback cover retainer on the outboard portion of the seatback, as shown in Figure 4.

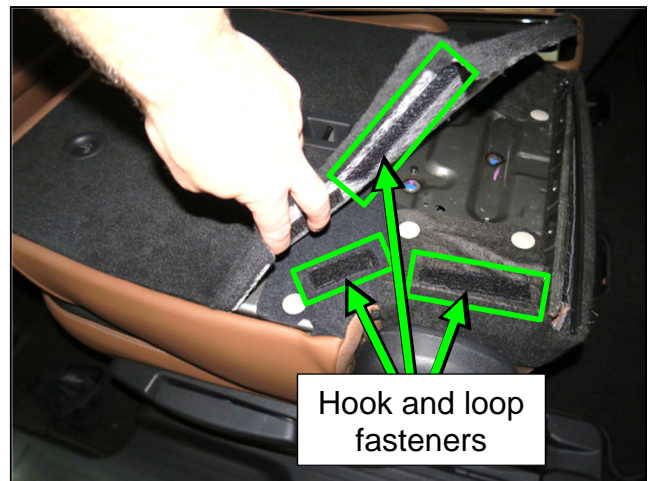


Figure 4

6. Using a forked finesse stick, remove the three (3) retainer clips shown in Figure 5.

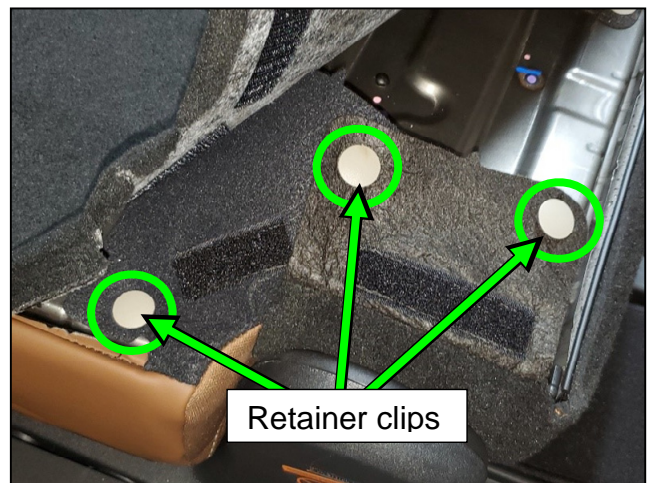


Figure 5

7. Separate the seatback cover material and position it, as shown in Figure 6.



Figure 6

8. Using a suitable light source, look in the area shown in Figure 7 to locate the weld to be inspected.

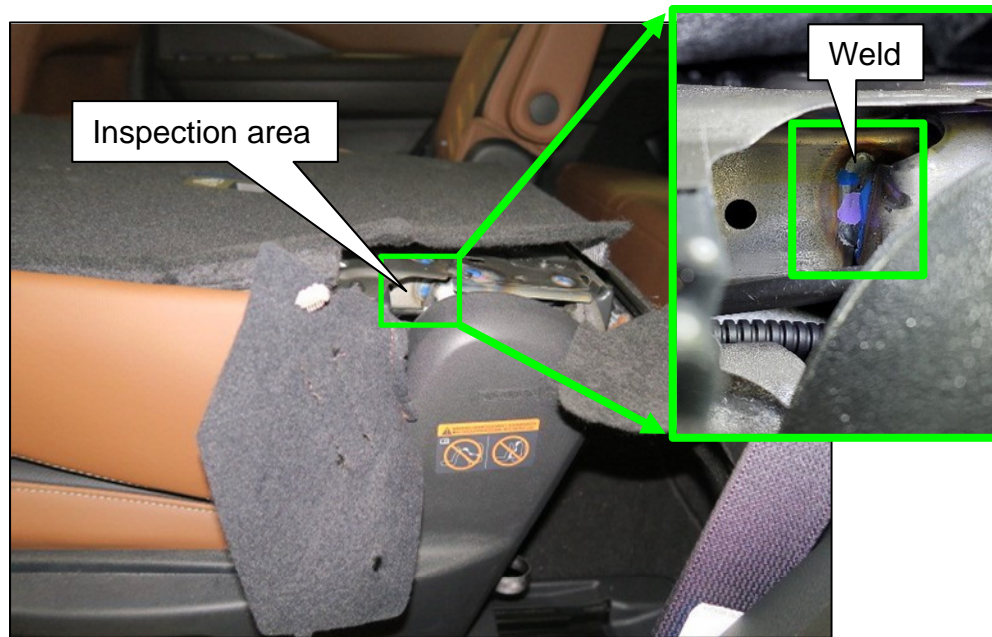


Figure 7

9. Inspect and compare the weld to the No Good (NG) examples (Figures 8 – 13 on page 6) and the OK examples (Figures 14 – 16 on page 7).
- If the weld is found to be OK, reassemble the seatback in the reverse order of disassembly, and then skip to the **CLAIMS INFORMATION** on the last page.
 - If the weld is NG, proceed to step 10 on page 8 to determine the correct captain's chair seat assembly part number for ordering.

NOTE:

- The weld should evenly cover both parts of the joint.
- The weld should run the entire length of the joint.
- The weld should run parallel to the joint.
- The weld should not have any cracks or separations between the two parts.

No Good (NG) Conditions

Large gap, weld not parallel to the joint

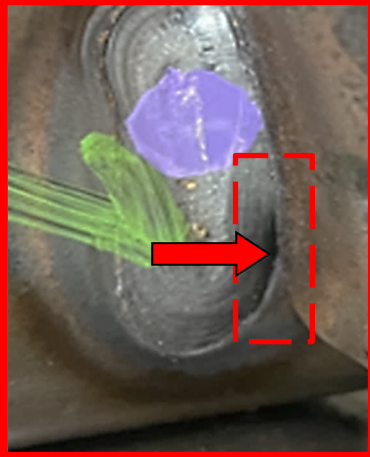


Figure 8

Large gap, weld not covering both parts

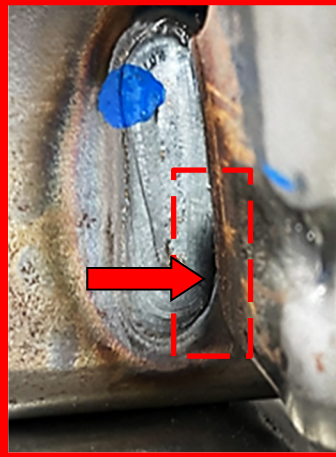


Figure 9

Large gap, weld not covering both parts

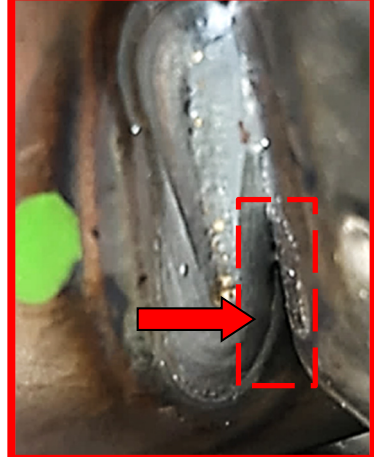


Figure 10

Large gap at the bottom of the weld



Figure 11

Large gap at the bottom of the weld

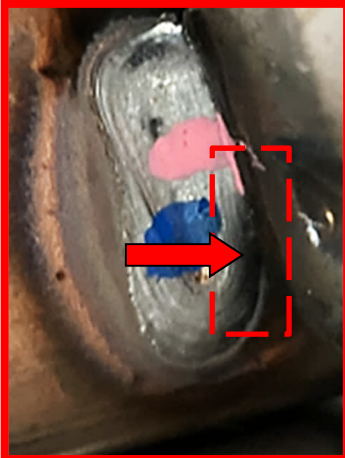


Figure 12

Separated weld, large gap at the bottom

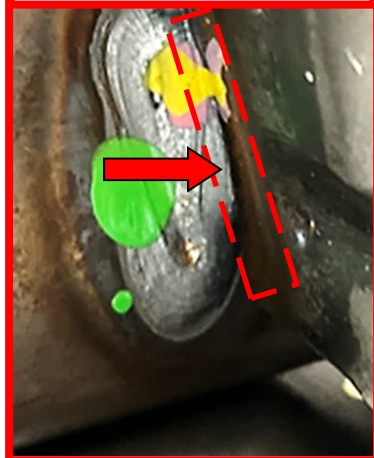


Figure 13

OK Conditions



Figure 14



Figure 15



Figure 16

Order the Seat Assembly Replacement

IMPORTANT: Before starting, make sure:

- ASIST on the CONSULT PC has been synchronized (updated) to the current date.
- All C-III plus software updates (if any) have been installed.

10. Connect the quick scan tool (J-52352) to a CONSULT PC USB port.

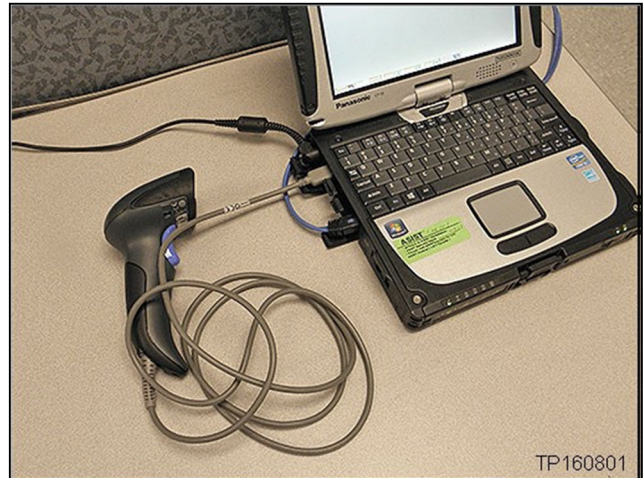


Figure 17

11. Open ASIST.

12. Select **Tech Support Info**, and then select **Bulletin Support Items**.

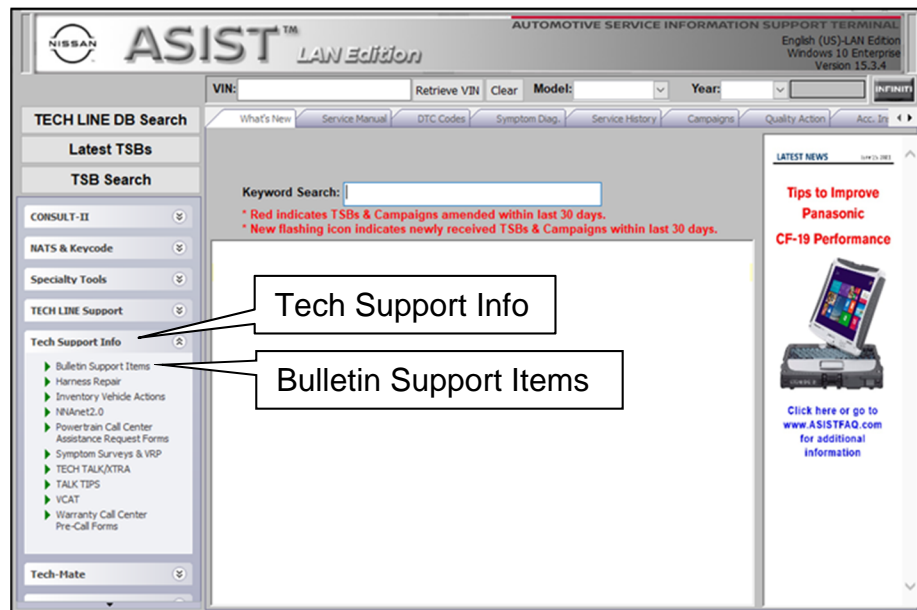


Figure 18

13. Select **CLICK HERE...** next to **PC845, PC846, PC847 2022 Pathfinder 2nd Row Seat Part Number Look up**.

NNA - Nissan Bulletin Support Items

Bulletin Support Items (Nissan) - Service Actions

R1814 Voluntary Safety Recall Campaign - 2009 Murano (Z51) Brake Fluid Flush Check Sheet [CLICK HERE...](#)

P0A08 Voluntary Service Campaign - 2010-2014 Murano (Z51) 2011-2015 Quest (E52) Brake Fluid Flush Check Sheet [CLICK HERE...](#)

Voluntary Safety Recall Campaign - MY17/18 Frontier, Versa SD/Note, Micra & MY17 NV1500-3500, NV200 + Taxi, Sentra Mechanical Key Ignition System [CLICK HERE...](#)

PC649 - ABS Actuator Inspection [CLICK HERE...](#)

Voluntary Safety Recall Campaign – MY2019 Altima; Brake pedal inspection [CLICK HERE...](#)

PC687 Rogue Rear Brake Caliper [CLICK HERE...](#)

PC716 - 2018 Altima/Rogue Cylinder Head Serial Number Inspection [CLICK HERE...](#)

PC804 Rogue Rear Brake Caliper [CLICK HERE...](#)

R21A4 Murano Rear Knuckle Inspection [CLICK HERE...](#)

PC845, PC846, PC847 2022 Pathfinder 2nd Row Seat Part Number Look up [CLICK HERE...](#)

Figure 19

14. Enter the **Dealer Code**.

[PC845, PC846, PC847](#)
[2022 Pathfinder 2nd Row Seat Part Number Look up](#)

Dealer Code	<input type="text" value="XXXX"/>	
VIN	<input type="text"/>	
Note: VIN can be scanned or entered manually		
<input type="button" value="Submit"/>		

Figure 20

15. Using the quick scan tool (J-52352), scan the bar code on the VIN Certification Label located at the base of the B-Pillar.

NOTE:

- Make sure the VIN Certification Label is clean.
- Hold the quick scan tool (J-52352) about 6 inches away from the label.
- Hold the trigger down until the quick scan tool (J-52352) is finished scanning the label, an audible 'beep' sound will be heard.
- Some VIN Certification Labels may not scan quickly.
- Once the VIN automatically populates in the form, verify all 17 digits are correct (Figure 22).
- If needed, the VIN can be entered manually.



Figure 21

[PC845, PC846, PC847](#)
[2002 Pathfinder 2nd Row Seat Part Number Look up](#)

Dealer Code	<input type="text" value="XXXX"/>
VIN	<input type="text" value="XXXXXXXXXXXXXXXX"/>
Note: VIN can be scanned or entered manually	
<input type="button" value="Submit"/>	

Figure 22

16. Select **Submit** on the ASIST screen.

[PC845, PC846, PC847](#)
[2002 Pathfinder 2nd Row Seat Part Number Look up](#)

Dealer Code	<input type="text" value="XXXX"/>
VIN	<input type="text" value="XXXXXXXXXXXXXXXX"/>
Note: VIN can be scanned or entered manually	
<input type="button" value="Submit"/>	

Figure 23

17. The part number for the 2nd row seat assembly will be provided along with a **Confirmation code**.

The screenshot shows a web form titled "2022 Pathfinder 2nd Row Seat Part Number Look up" with a link to "PC845, PC846, PC847". The form contains the following fields and instructions:

- Dealer Code:** A text box with "XXXX" as a placeholder.
- VIN:** A text box with "XXXXXXXXXXXXXX" as a placeholder. Below it, a note states: "Note: VIN can be scanned or entered manually".
- LH 2nd Row part number:** A text box with "XXXXXX-XXXXXX" as a placeholder.
- Confirmation code:** A text box with "XXXXX" as a placeholder. Below it, a note states: "Note: Enter the confirmation code into the DBS comments section when placing the parts order."

A "Submit" button is located at the bottom right of the form. Below the form, a green banner reads "VIN number applicable for the campaign".

Figure 24

18. Place an order in DBS for only the part that is needed.
- When placing an order in DBS, enter the **Confirmation code** into the comments section.
- IMPORTANT:** If the **Confirmation code** is not provided when the order is placed, the order will be canceled.

Side Airbag Module Registration

NOTE: A new Side Airbag Module is part of the replacement seat assembly and the replacement Side Airbag Module must be registered before the replacement seat assembly is installed.

19. Open ASIST.

20. Select **Tech Support Info**, and then select **Inventory Vehicle Actions**.

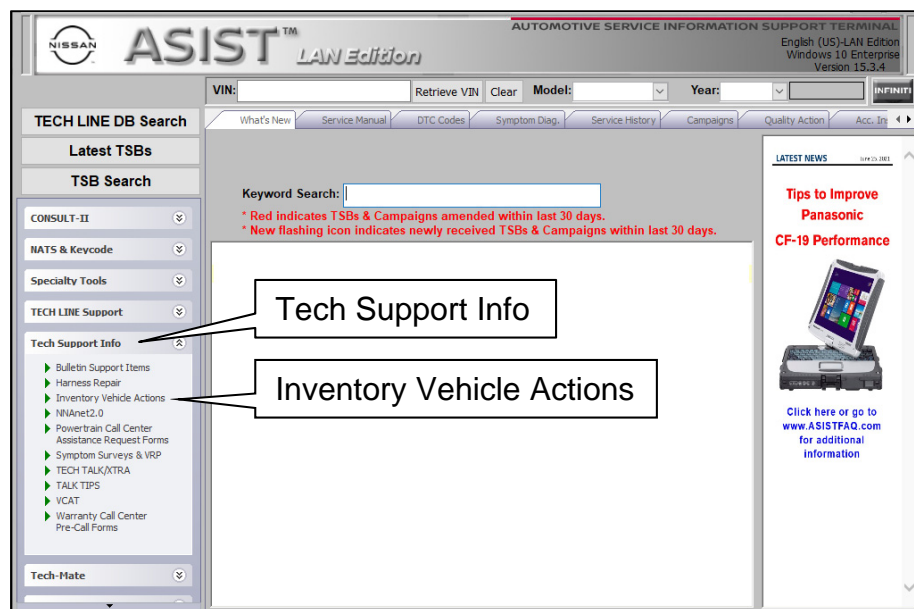


Figure 25

21. Select **CLICK HERE...** next to **Airbag to VIN Registration**.

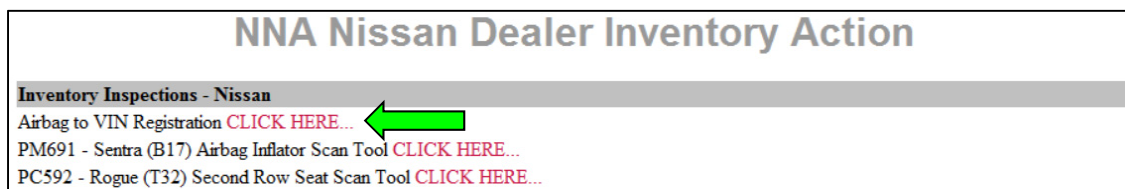


Figure 26

22. Using the quick scan tool (J-52352), scan the bar code on the VIN Certification Label located at the base of the B-Pillar.

NOTE:

- Make sure the VIN Certification Label is clean.
- Hold the quick scan tool (J-52352) about 6 inches away from the label.
- Hold the trigger down until the quick scan tool (J-52352) is finished scanning the label, an audible 'beep' sound will be heard.
- Some VIN Certification Labels may not scan quickly.
- Once the VIN automatically populates in the form, verify all 17 digits are correct (Figure 28).
- If needed, the VIN can be entered manually.



Figure 27

[Airbag to VIN Registration](#)
9/8/2021 11:03:15 AM (Mountain Standard Time)
Please enter/scan the VIN and Airbag Inflator Serial Number

Dealer Code	
Key Number	
VIN	XXXXXXXXXXXXXXXXXX
Airbag Serial Number	

Figure 28

23. Using the quick scan tool (J-52352), scan the QR code (serial number) on the new Airbag Module.

NOTE:

- Make sure the QR code label is clean.
- Hold the quick scan tool (J-52352) about 6 inches away from the QR code.
- Hold the trigger down until the quick scan tool (J-52352) is finished scanning the QR code, an audible 'beep' sound will be heard.
- Once the serial number automatically populates in the form, verify all the digits are correct (Figure 31).
- If needed, the serial number can be entered manually.

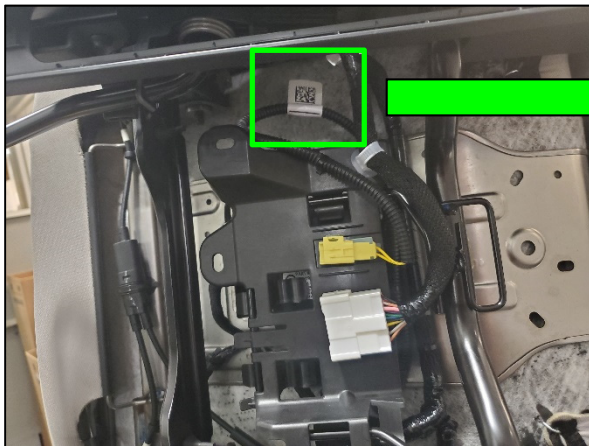


Figure 29

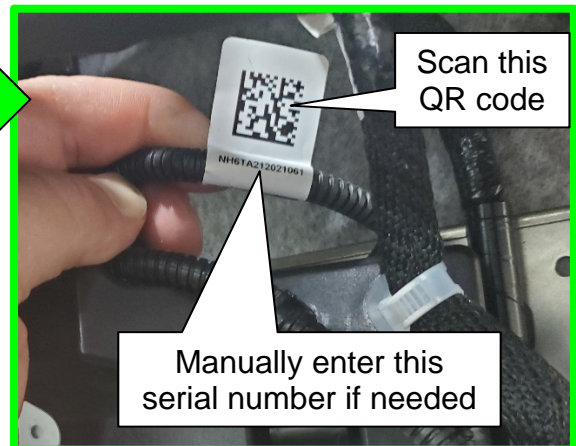


Figure 30

24. Select **Submit** on the ASIST screen.

[Airbag to VIN Registration](#)
9/8/2021 11:03:15 AM (Mountain Standard Time)
Please enter/scan the VIN and Airbag Inflator Serial Number

Dealer Code	
Key Number	
VIN	XXXXXXXXXXXXXXXXXX
Airbag Serial Number	XXXXXXXXXXXXXXXXXX

Submit

Figure 31

LH Captain's Chair Seat Assembly Replacement

25. Replace the LH 2nd row captain's chair seat assembly.
- Refer to the ESM: **BODY INTERIOR > SEAT > REMOVAL AND INSTALLATION > SECOND ROW SEATS > Removal and Installation**

PARTS INFORMATION

DESCRIPTION	PART NUMBER	QUANTITY
SEAT ASSY – 2 nd ROW, LH (Captain's Chair Seat Assembly)	88050 – (1)	1 (If Needed)

(1) Refer to steps 10 - 18 on pages 8 - 11 to order the correct part number.

CLAIMS INFORMATION

Submit a “CM” line claim using the following claims coding:

CAMPAIGN (“CM”) ID	DESCRIPTION	OP CODE	FRT
PC845	<u>OK Condition</u> Inspect LH 2 nd Row Captain's Chair Seat Assembly	PC8450	0.2
	<u>NG Condition</u> Inspect and Replace LH 2 nd Row Captain's Chair Seat Assembly	PC8451	0.7

AMENDMENT HISTORY

PUBLISHED DATE	REFERENCE	DESCRIPTION
September 23, 2021	NTB21-089	Original bulletin published

