



GROUP	MODEL
Safety Recall Campaign	2015-2017MY Sedona (YP)
NUMBER	DATE
SC217 (Rev 1, 12/21/2021)	November 2021

## SAFETY RECALL CAMPAIGN

SUBJECT:

# SMART JUNCTION BOX SOFTWARE UPGRADE FOR TURN SIGNAL OPERATION IMPROVEMENT (SC217)

### NOTICE

**This bulletin has been revised to include additional information. New/revised sections of this bulletin are indicated by a black bar in the margin area.**

This bulletin provides the procedure to improve the logic of the Smart Junction Box (SJB) on certain 2015-2017MY Sedona (YP) vehicles, produced from July 21, 2014 through June 10, 2016. The Smart Junction Box (SJB) interprets the signal from the multifunction switch to determine the intended turn signal direction. The SJB software logic may not properly interpret the signals received from the multifunction switch in certain circumstances. As a result, the turn signal may intermittently activate in the opposite direction of what was intended by the driver, thereby increasing the risk of a crash.

To correct this condition, follow the procedure outlined in this publication to apply the improved logic to the Smart Junction Box (SJB) system using the KDS ECU Upgrade function as described in this bulletin. For confirmation that the latest reflash has been applied to a vehicle you are working on, verify the ROM ID using the table on page 3 of this bulletin. Before conducting the procedure, verify the vehicle is included in the list of affected VINs.



Kia Diagnostic System (KDS)

### NOTICE

**There is no charge to the vehicle owner for this repair. Under applicable law, you may not sell or otherwise deliver any affected vehicle until it has been repaired pursuant to the procedures set forth in this bulletin.**

### NOTICE

**To assure complete customer satisfaction, always remember to refer to WebDCS Warranty Coverage (validation) Inquiry Screen (Service → Warranty Coverage → Warranty Coverage Inquiry) for a list of any additional campaigns that may need to be performed on the vehicle before returning it to the customer.**

SUBJECT:

## SMART JUNCTION BOX SOFTWARE UPGRADE FOR TURN SIGNAL OPERATION IMPROVEMENT (SC217)

### ECU Upgrade Procedure:

To correct this condition, the ECU should be reprogrammed using the KDS download, as described in this bulletin.

Upgrade Event Name
575. YP SJB UPGRADE FOR TURN SIGNAL OPERATION


#### NOTICE

- Confirm a fully charged battery (12.3 volts or higher is necessary) is used or utilize a fully charged jump starter box connected to the battery.
- **Ensure the KDS is sufficiently charged at 60% or higher prior to reflash.**
- All ECU upgrades must be performed with the ignition set to the 'ON' position unless otherwise stated.
- **Damaged VCI II units should not be used and promptly replaced.**
- Be careful not to disconnect the VCI-II connected to the vehicle during the ECU upgrade procedure.
- **DO NOT start the engine during ECU upgrade.**
- DO NOT turn the ignition key 'OFF' or interrupt the power supply during ECU upgrade.
- **When the ECU upgrade is completed, turn the ignition 'OFF' and wait 10 seconds before starting the engine.**
- ONLY use approved ECU upgrade software designated for the correct application.

#### IMPORTANT

It is recommended to ALWAYS check the Electronic Parts Catalog (EPC) to locate the ECU Part Number respective to Auto/Manual Mode ROM IDs. DO NOT reference the parts label affixed to the ECU.

#### NOTICE

Before attempting an ECU upgrade on any Kia model, make sure to first determine whether the applicable model is equipped with an immobilizer  security system. Failure to follow proper procedures may cause the PCM to become inoperative after the upgrade and any claims associated with this repair may be subject to chargeback.

SUBJECT:

## SMART JUNCTION BOX SOFTWARE UPGRADE FOR TURN SIGNAL OPERATION IMPROVEMENT (SC217)

### ROM ID INFORMATION TABLE:

Upgrade Event #575

Model	System	ECU P/No.	ROM ID	
			Previous	New
15-17MY (YP)	Smart Junction Box (SJB)	91950 A9510	91950 A9510_100 91950 A9510_101 91950 A9510_102 91950 A9510_103	91950 A9510_104
		91950 A9540	91950 A9540_100 91950 A9540_101 91950 A9540_102 91950 A9540_103	91950 A9540_104
		91950 A9550	91950 A9550_100 91950 A9550_101 91950 A9550_102 91950 A9550_103	91950 A9550_104
		91950 A9560	91950 A9560_100 91950 A9560_101 91950 A9560_102 91950 A9560_103	91950 A9560_104
		91950 A9570	91950 A9570_100 91950 A9570_101 91950 A9570_102 91950 A9570_103	91950 A9570_104
		91950 A9620	91950 A9620_100 91950 A9620_101 91950 A9620_102 91950 A9620_103	91950 A9620_104
		91950 A9630	91950 A9630_100 91950 A9630_101 91950 A9630_102 91950 A9630_103	91950 A9630_104
		91950 A9640	91950 A9640_100 91950 A9640_101 91950 A9640_102 91950 A9640_103	91950 A9640_104
		91950 A9650	91950 A9650_100 91950 A9650_101 91950 A9650_102 91950 A9650_103	91950 A9650_104
		91950 A9660	91950 A9660_100 91950 A9660_101 91950 A9660_102 91950 A9660_103	91950 A9660_104
91950 A9670	91950 A9670_100 91950 A9670_101 91950 A9670_102 91950 A9670_103	91950 A9670_104		



## SMART JUNCTION BOX SOFTWARE UPGRADE FOR TURN SIGNAL OPERATION IMPROVEMENT (SC217)

SUBJECT:

Model	System	ECU P/No.	ROM ID	
			Previous	New
15-17MY (YP)	Smart Junction Box (SJB)	91950 A9680	91950 A9680_100 91950 A9680_101 91950 A9680_102 91950 A9680_103	91950 A9680_104
		91950 A9690	91950 A9690_100 91950 A9690_101 91950 A9690_102 91950 A9690_103	91950 A9690_104
		91950 A9700	91950 A9700_100 91950 A9700_101 91950 A9700_102 91950 A9700_103	91950 A9700_104
		91950 A9710	91950 A9710_100 91950 A9710_101 91950 A9710_102 91950 A9710_103	91950 A9710_104
		91950 A9740	91950 A9740_100 91950 A9740_101 91950 A9740_102 91950 A9740_103	91950 A9740_104
		91950 A9760	91950 A9760_100 91950 A9760_101 91950 A9760_102 91950 A9760_103	91950 A9760_104
		91950-A9770	91950 A9770_100 91950 A9770_101 91950 A9770_102 91950 A9770_103	91950 A9770_104
		91950-A9780	91950 A9780_100 91950 A9780_101 91950 A9780_102 91950 A9780_103	91950 A9780_104



SUBJECT:

# SMART JUNCTION BOX SOFTWARE UPGRADE FOR TURN SIGNAL OPERATION IMPROVEMENT (SC217)

## NOTICE

**Prior to performing the ECU upgrade, be sure to check that the KDS is fully charged.**

1. Connect the VCI-II to the OBD-II connector, located under the driver's side of the instrument panel.

## NOTICE

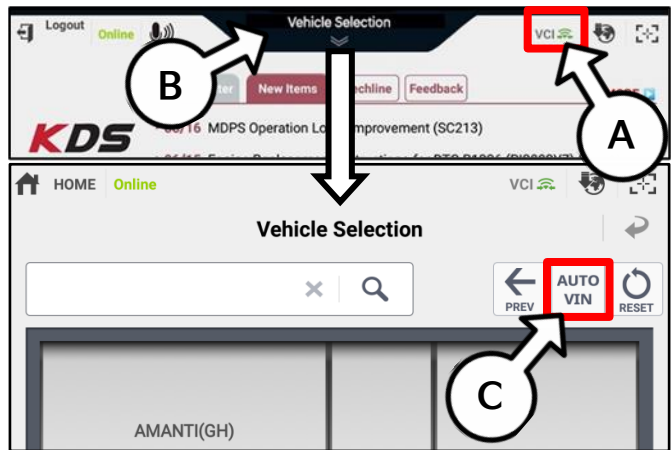
The ECU upgrade function on KDS operates wirelessly. It is not necessary to perform the upgrade via USB cable.



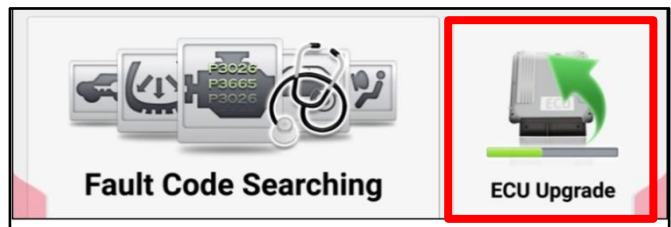
2. With the ignition ON, turn ON the KDS tablet. Select 'KDS' from the home screen.



3. Confirm communication with VCI (A) and then configure the vehicle (B) using the 'AUTO VIN' (C) feature.



4. Select 'ECU Upgrade'.



**SMART JUNCTION BOX SOFTWARE UPGRADE FOR  
TURN SIGNAL OPERATION IMPROVEMENT (SC217)**

SUBJECT:

- The KDS will check the server for recently uploaded Events and then automatically download Upgrade Event #575.

**NOTICE**

The vehicle must be identified in Vehicle Selection to download an Event for that vehicle.

After the download is complete, the program will shut down to install. Please wait until the program restarts.

Event	Status
271.QF 2.4GDI DTC P0171,P0420 LOGIC IMPROVEMENT	Downloading
273.TF 2.4GDI DTC P0171,P0420 LOGIC IMPROVEMENT	Ready

36%

Do not touch any system buttons while performing this function.

KDS screenshot shown above is for demonstration purposes only. Events shown in screenshot are not applicable to this bulletin.

- Select Auto Mode.

**CAUTION**

Do NOT attempt to perform a Manual Mode upgrade UNLESS Auto Mode fails. Always follow the instructions given on the KDS in either Auto or Manual mode.

Auto Mode Manual Mode

- Select the SJB system under the System selection menu. Touch ID Check (D) and confirm that the latest update is available. Select Upgrade Event #575, and select Upgrade to continue.

System

AEB CLU PSD SJB

ROM ID

Currently in Vehicle #####

Latest Update #####

Event Group TSB

###.XX -----

Previous Upgrade

D ID Check

- The ECU upgrade will begin and the progress of the upgrade will appear on the bar graph. Upgrade part (1/2) (E) will download the upgrade event to the VCI-II. Upgrade part (2/2) (F) will upgrade the ECU.

**CAUTION**

Do not touch the system buttons (like 'Back', 'Home', 'etc.') while performing ECU Upgrade.

E

23%

ECU Upgrading...(1/2)

ECU is in the process of being upgraded. Please wait a few minute.

F

6%

ECU Upgrading...(2/2)

ECU is in the process of being upgraded. Please wait a few minute.



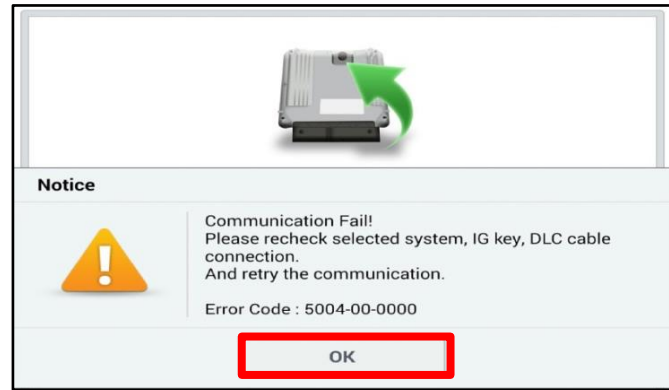
SUBJECT:

## SMART JUNCTION BOX SOFTWARE UPGRADE FOR TURN SIGNAL OPERATION IMPROVEMENT (SC217)

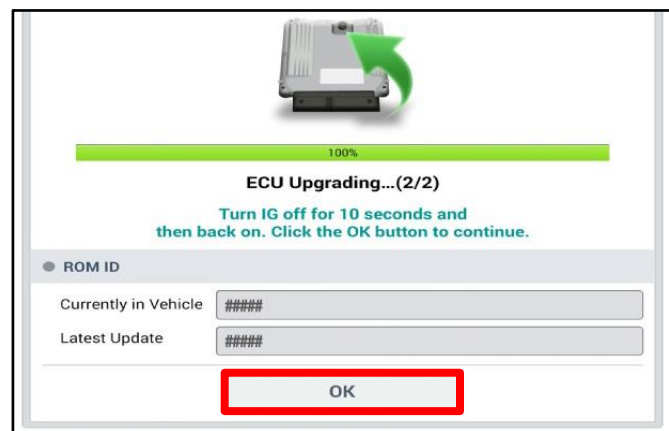
9. If a "Communication Fail" screen appears, verify that the VCI-II and KDS are communicating properly. Select 'OK' and restart the procedure from step 4.

### NOTICE

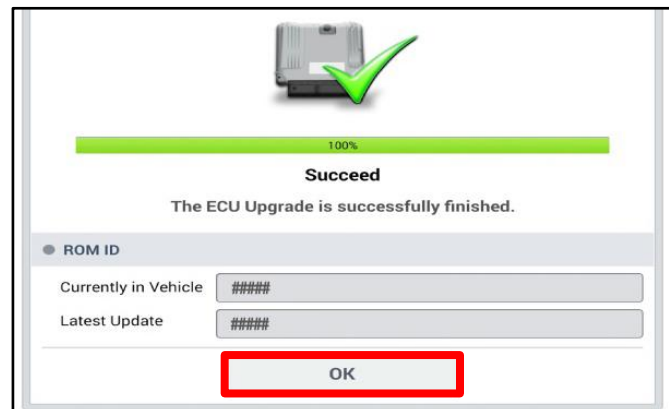
**If an error notice continues to appear or if the upgrade cannot be performed, DO NOT disconnect the KDS/VCI-II. Contact GIT America Help Desk at (888) 542-4371 or Techline.**



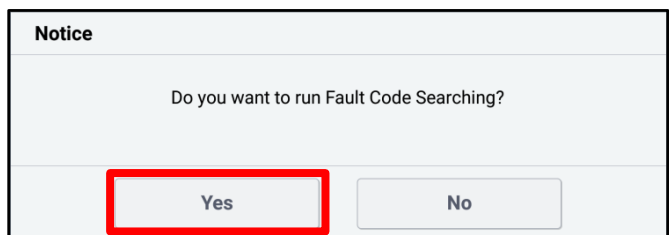
10. When instructed on the KDS, turn the ignition OFF for ten (10) seconds then back on. Select 'OK' to continue.



11. Once the upgrade is complete, select 'OK' to finalize the procedure.



12. When prompted, select 'YES' to check for Diagnostic Trouble Codes (DTC) and erase any DTCs stored such as EPS, ESC, and TPMS that may have been set during the upgrade.



13. Start the engine to confirm normal operation of the vehicle.

## Manual Upgrade Procedure:

 NOTICE

The manual upgrade should **ONLY** be performed if the automatic upgrade fails.

**If the automatic upgrade fails, turn the ignition 'OFF' for about 10 seconds then place it back in the 'ON' position to reset the control unit BEFORE performing manual upgrade.**

See table below for 'Manual Mode' passwords.

Manual Mode ECU Upgrade Passwords

Menu	Password
YP SJB : 91950-A9510/540~570, A9620~710/740/760~780	9780

1. Within the ECU Upgrade screen displayed, select **Manual Mode**.
2. Select the **SJB** system under the System selection menu. Select **Upgrade Event #575** and select **Upgrade** to continue.
3. Select the appropriate control unit part number with reference to the ROM ID Information Table on page 3, and select **OK**.
4. Enter the appropriate password from the Manual Mode password table above and select **OK**.
5. The upgrade will begin and the progress of the upgrade will appear on the bar graph.
6. When instructed on the KDS, turn the ignition **OFF** for ten (10) seconds then back on. Select **OK**.
7. Once the upgrade is complete, select **OK** to finalize the procedure.
8. When prompted, select **YES** to check for Diagnostic Trouble Codes (DTC) and erase any DTCs stored such as EPS, ESC, and TPMS that may have been set during the upgrade.
9. Start the engine to confirm proper operation of the vehicle.



SUBJECT:

## SMART JUNCTION BOX SOFTWARE UPGRADE FOR TURN SIGNAL OPERATION IMPROVEMENT (SC217)

### AFFECTED VEHICLE RANGE:

Model	Production Date Range
Sedona (YP)	July 21, 2014 to June 10, 2016

### REQUIRED TOOL:

Tool Name	Figure	Comments
KDS		Kia Diagnostic System

### WARRANTY INFORMATION:

**N Code: N99 C Code: C99**

Claim Type	Causal P/N	Qty.	Repair Description	Labor Op Code	Op Time	Replacement P/N	Qty.
R	91941 3X510	0	(SC217) SJB Upgrade for Turn Signal Operation Improvement	211120R0	0.3 M/H	N/A	0

#### NOTICE

VIN inquiry data for this repair is provided for tracking purposes only. Kia retailers should reference [SC217](#) when accessing the WebDCS system.