



Service Bulletin

American Honda Motor Co., Inc.

Multiple Model - CB/CBR500 #1

September 2021

SAFETY RECALL

MULTIPLE MODEL CB500XA / CBR500RA - ABS BRAKE MODULATOR

BACKGROUND

Honda is launching a **SAFETY RECALL** on **CERTAIN** 2019-2020 CB500XA/CBR500RA vehicles to inspect the ABS Modulator for a potential defect that might cause the vehicle to increase front brake stroke and decrease the braking force.

AFFECTED UNITS

CERTAIN NEW or USED 2019-2020 CB500XA/CBR500RA.

To search for applicable recalls on a specific unit, you **MUST** use *Unit Information* on **iN**.

To manage your affected inventory, use your dealer *eResponsibility Report* on **iN**.

DEALER INVENTORY

As of September 3, 2021, **YOU MUST NOT SELL** any affected **NEW OR USED** motorcycles listed in the **AFFECTED UNIT** section until it is inspected and repaired if necessary, according to this Service Bulletin.

- To search for applicable recalls on a specific unit, you must use *Unit Information* on **iN**.
- To manage your affected inventory, refer to *eResponsibility Report* on **iN**.

CUSTOMER NOTIFICATION

American Honda intends to mail customer letters to all owners of affected 2019-2020 CB500XA/CBR500RA vehicles in October 2021. Customers will be informed that their vehicle may be affected by a safety related defect and will be advised to make an appointment with an authorized Honda dealer for inspection, and repair (if needed).

PARTS INFORMATION

Parts are available through the normal parts ordering process.

MODEL	DESCRIPTION	PART NUMBER	QTY.
CB500XA	*Modulator Set	06570-MKP-306	1
CBR500RA	*Modulator Set	06570-MKP-305	1

* Modulator Set Includes: Modulator Assy. (Qty. 1), Washer, Oil Bolt (Qty. 4), Seal, Air Cleaner (Qty. 1)

DEALER REPAIR RESPONSIBILITY

- Repairs must be performed by a qualified technician.
- Performing this repair exactly as shown in Repair Procedure instructions is critical for the remedy to be effective. Carefully follow all instructions.
- Service Management should inspect and confirm the repair.
- Dealer submission of a warranty claim affirms this repair was properly performed.

Multiple Model - CB/CBR500 #1
September 2021

If the first two characters are anything other than those listed in the table below, the modulator is **GOOD**.

The table represents the **NO GOOD** Lot Codes and Range represented on the ABS Modulator. Starting with the first two characters, if the first two characters are 9F, 9H, 9K, 9L or 9N, the modulator is **NO GOOD** and must be replaced.

If the modulator code begins with 9C, 9D or 9S, see the table below to determine if the modulator is **NO GOOD**.

If you are unsure whether the ABS Brake Modulator is good or no good, record the entire Lot Code from the modulator and contact TechLine for assistance.

Lot # Beginning With ↓	Individual Codes = NO GOOD				
9C21...	9C21-A-0896	9C21-A-0910	9C21-A-0915	9C21-A-0922	9C21-A-0925
	9C21-A-0926	9C21-A-0927	9C21-A-0960	9C21-A-1025	9C21-A-1066
	9C21-A-1074				
9C28...	9C28-A-1466	9C28-A-1518	9C28-A-1535	9C28-A-1610	9C28-A-1611
	9C28-A-1622	9C28-A-1655			
9D04...	9D04-A-0614	9D04-A-0653	9D04-A-0658	9D04-A-0661	9D04-A-0703
	9D04-A-0751				
9D13...	9D13-A-1963	9D13-A-1983	9D13-A-2033	9D13-A-2070	9D13-A-2088
	9D13-A-2102	9D13-A-2113	9D13-A-2193	9D13-A-2203	9D13-A-2207
	9D13-A-2223	9D13-A-2236			
9D15...	9D15-A-0001	9D15-A-0020	9D15-A-0025	9D15-A-0030	9D15-A-0031
	9D15-A-0037	9D15-A-0069	9D15-A-0087	9D15-A-0110	9D15-A-0116
	9D15-A-0125	9D15-A-0137	9D15-A-0138	9D15-A-0144	9D15-A-0158
	9D15-A-0159	9D15-A-0163	9D15-A-0191	9D15-A-0195	9D15-A-0205
	9D15-A-0207	9D15-A-0210	9D15-A-0217	9D15-A-0220	9D15-A-0246
	9D15-A-0272	9D15-A-0293	9D15-A-0299	9D15-A-0365	9D15-A-0460
	9D15-A-0470	9D15-A-0492	9D15-A-0514	9D15-A-0524	9D15-A-0561
	9D15-A-0606	9D15-A-0613	9D15-A-0645	9D15-A-0650	9D15-A-0674
	9D15-A-0811	9D15-A-0814	9D15-A-0817	9D15-A-0840	9D15-A-0850
	9D15-A-0858	9D15-A-0863	9D15-A-0864	9D15-A-0865	9D15-A-0887
9D17...	9D15-A-0912	9D15-A-0914	9D15-A-0934	9D15-A-0938	
	9D17-A-0112	9D17-A-0117	9D17-A-0120	9D17-A-0129	9D17-A-0265
	9D17-A-0269	9D17-A-0285			
	Ranges = NO GOOD				
9D19... THROUGH 9D30...	ALL				
9F...	ALL				
9H...	ALL				
9K...	ALL				
9L...	ALL				
9N...	ALL				
9S01... THROUGH 9S14...	ALL				

TEMPLATE CLAIM INFORMATION

After completing a recall repair, immediately submit one template claim per affected VIN using the appropriate template information.

MODEL	RESULT	TEMPLATE	FLAT RATE
CB500XA	INSPECTION ONLY	KM6A	0.4
CB500XA	INSPECT AND REPAIR	KM6B*	2.6
CBR500RA	INSPECTION ONLY	KM6C	0.4
CBR500RA	INSPECT AND REPAIR	KM6D*	2.5

*Includes reimbursement for (1) bottle of Pro Honda DOT 4 brake fluid.

WARRANTY QUESTIONS

If you have any warranty administration questions relating to template claims and claim filing procedures, please contact: Powersports Warranty Online: **iN > Service > Warranty & HondaCare > Warranty Connect Filing**

TECHNICAL QUESTIONS

If you have any technical questions relating to the repair procedure, please contact: Powersports TechLine Online: **iN > Service > TechLine > TechLine Connect**
Or call (800) 421-1900, option 9.

RECALL REPAIR IDENTIFICATION

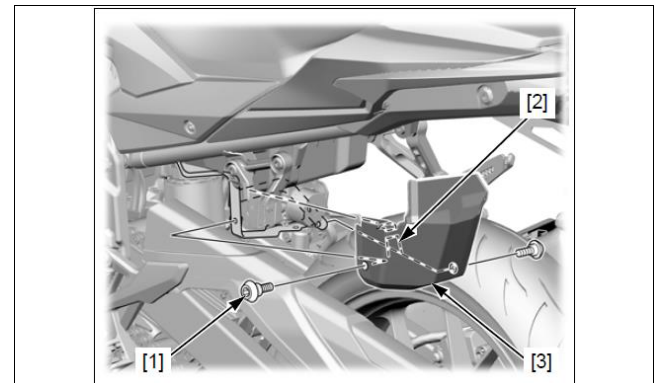
Before you begin the repair procedure, verify that the unit has not already been repaired by searching *Unit Information* on **iN**.

RECALL INSPECTION PROCEDURE

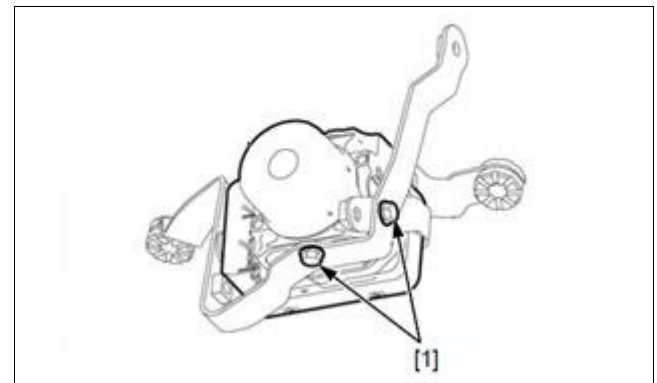
The ABS Modulator is located on the right side of the motorcycle, for both the CB500XA and CBR500RA.



Remove the two screws [1] and release the tab [2] to remove the ABS Modulator cover [3].

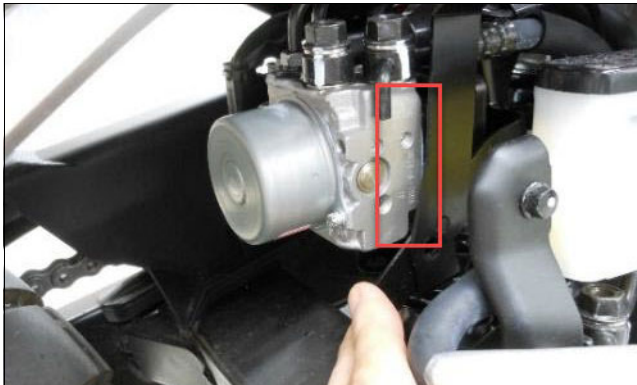


Remove the two bolts [1] from the bottom of the ABS Modulator bracket.

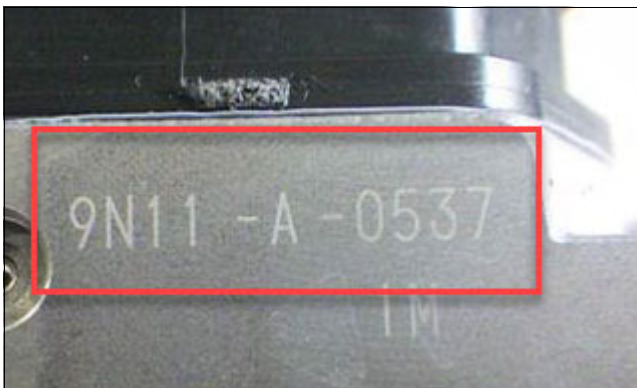


**Multiple Model - CB/CBR500 #1
September 2021**

Slightly push the ABS Modulator bracket forward, towards the front of the motorcycle, and locate the Lot Code that is stamped on the right side of the ABS Modulator.



Record the entire lot code and compare it to the table on page two of this service bulletin to determine if the ABS Modulator is Good or No Good. If Good, replace the removed parts and immediately file the appropriate template claim for inspection only. If No Good the ABS Modulator must be replaced.



RECALL REPAIR PROCEDURE

If repair is needed, refer to the model specific Service Manual to replace the ABS Modulator. After repair immediately file the appropriate template claim for inspection and repair.

TEXT OF CUSTOMER LETTER

Customer letter forthcoming.