



Safety Recall

Code: 24HH

REVISION

Subject Engine Control Unit (ECU) Software

Release Date September 23, 2022

REVISION SUMMARY Claiming and work instructions updated with information about P0606 fault

NOTE: Updated areas in this document are indicated by an orange bar in the right margin

Affected Vehicles

Country	Beginning Model Year	Ending Model Year	Vehicle	Vehicle Count
USA	2022	2022	TAOS	5,092
CAN	2022	2022	TAOS	915

Check Campaigns/Actions screen in ELSA on the day of repair to verify that a VIN qualifies for repair under this action. ELSA is the only valid campaign inquiry & verification source.

- ✓ Campaign status must show "open."
- ✓ If ELSA shows other open action(s), inform your customer so that the work can also be completed at the same time the vehicle is in the workshop for this campaign.

Problem Description

Vehicles included in this recall are equipped with an all-wheel drive powertrain and have a specific software version installed in the engine control unit that, under specific conditions (high ambient temperatures, high engine load, A/C on), may lead to a stalling condition when coming to a stop. The engine can be immediately restarted manually. An engine that stalls while coming to a stop (20 MPH) may increase the risk of a crash.

Corrective Action

Perform an ECU software update.

Code Visibility

On or about October 5, 2021, the campaign code was applied to affected vehicles.

Owner Notification

Owner notification took place in October 2021. Owner letter examples are included in this bulletin for your reference.

Additional Information

Please alert everyone in your dealership about this action, including Sales, Service, Parts and Accounting personnel. Contact Warranty if you have any questions.

IMPORTANT REMINDER ON VEHICLES AFFECTED BY SAFETY & COMPLIANCE RECALL:

New Vehicles in Dealer Inventory: It is a violation of federal law for a dealer to deliver a new motor vehicle or any new or used item of motor vehicle equipment (including a tire) covered by this notification under a sale or lease until the defect or noncompliance is remedied. By law, dealers must correct, prior to delivery for sale or lease, any vehicle that fails to comply with an applicable Federal Motor Vehicle Safety Standard or that contains a defect relating to motor vehicle safety.

Pre-Owned Vehicles in Dealer Inventory: Dealers should not deliver any pre-owned vehicles in their inventory which are involved in a safety or compliance recall until the defect has been remedied.

Dealers must ensure that every affected inventory vehicle has this campaign completed before delivery to consumers.

The repair information in this document is intended for use only by skilled technicians who have the proper tools, equipment and training to correctly and safely maintain your vehicle. These procedures are not intended to be attempted by "do-it-yourselfers," and you should not assume this document applies to your vehicle, or that your vehicle has the condition described. To determine whether this information applies, contact an authorized Volkswagen dealer. ©2022 Volkswagen Group of America, Inc. and Volkswagen Canada. All Rights Reserved.

Fill out and affix Campaign Completion Label (CAMP 010 000) after work is complete.
Labels can be ordered at no cost via the Compliance Label Ordering portal at www.vwhub.com.

Claim Entry Instructions

The labor times listed here may differ from the labor operations and labor times listed in ELSA.

After campaign has been completed, enter claim as soon as possible to help prevent work from being duplicated elsewhere. Attach the ELSA screen print showing action *open on the day of repair* to the repair order.

If customer refused campaign work:

- ✓ U.S. dealers: Submit request via WISE under the *Campaigns/Update/Recall Closure* option.
- ✓ Canada dealers: Upload the repair order [signed by customer] to Volkswagen WIN/Operations/Campaign Closure.

Service Number	24HH		
Damage Code	0099		
Parts Vendor Code	WWO		
Claim Type	Sold vehicle: 7 10 Unsold vehicle: 7 90		
Causal Indicator	Mark labor as causal		
Vehicle Wash/Loaner	<p>Do not claim wash/loaner under this action</p> <p>U.S.A.: Loaner/rental coverage cannot be claimed under this action. However, loaner/rental may be covered under the Alternate Transportation Program. Please refer to the Volkswagen Warranty Policy and Procedures Manual for loaner claims information and reimbursement details.</p> <p>Canada: Loaner/rental coverage cannot be claimed under this action. Please refer to Volkswagen Service Loaner Program to determine loaner eligibility.</p>		
Criteria I.D.	01 or X1		
	LABOR		
	Labor Op	Time Units	Description
	2706 89 50	10	Connect battery charger
	2470 25 99	Time stated on diagnostic protocol (up to 40 TU)	Update engine control module software
	<i>Add only if MIL is on with fault P0606 after the flash</i>		
	0150 00 00	10	Perform operations to clear fault

Customer Letter Example (USA)

<MONTH YEAR>

<CUSTOMER NAME>

<CUSTOMER ADDRESS>

<CUSTOMER CITY STATE ZIPCODE>

This notice applies to your vehicle: <MODEL YEAR> <BRAND> <CARLINE>, <VIN>

NHTSA: 21V615

Subject: Safety Recall 24HH - Engine Control Unit (ECU) Software

Dear Volkswagen Owner,

This notice is sent to you in accordance with the National Traffic and Motor Vehicle Safety Act. Volkswagen has decided that a defect, which relates to motor vehicle safety, exists in certain 2022 model year Volkswagen Taos vehicles. Our records show that you are the owner of a vehicle affected by this action.

- What is the issue?** Vehicles included in this recall are equipped with an all-wheel drive powertrain and have a specific software version installed in the engine control unit that, under specific conditions (high ambient temperatures, high engine load, A/C on), may lead to a stalling condition when coming to a stop. The engine can be immediately restarted manually. An engine that stalls while coming to a stop (20 MPH) may increase the risk of a crash.
- What will we do?** To correct this defect, your authorized Volkswagen dealer will update the engine control unit (ECU) software. This work will take about an hour to complete and will be performed for you free of charge. Please keep in mind that your dealer may need additional time for the preparation of the repair, as well as to accommodate their daily workshop schedule.
- What should you do?** Please contact your authorized Volkswagen dealer without delay to schedule this recall repair. To set up an appointment online, please visit www.vw.com/find-a-dealer.
- Lease vehicles and address changes** If you are the lessor and registered owner of the vehicle identified in this action, the law requires you to forward this letter immediately via first-class mail to the lessee within ten (10) days of receipt. If you have changed your address or sold the vehicle, please fill out the enclosed prepaid Owner Reply card and mail it to us so we can update our records.
- Can we assist you further?** If your authorized Volkswagen dealer fails or is unable to complete this work free of charge within a reasonable time, or if you should have any questions about this communication, please reach out to us using your preferred method of communication at www.vw.com/contact or by calling us at 800-893-5298.
- Checking your vehicle for open Recalls and Service Campaigns** To check your vehicle's eligibility for repair under this or any other recall/service campaign, please visit www.vw.com/owners/recalls and enter your Vehicle Identification Number (VIN) into the Recall/Service Campaign Lookup tool.

If you still cannot obtain satisfaction, you may file a complaint with: The Administrator, National Highway Traffic Safety Administration, 1200 New Jersey Avenue, SE., Washington, DC 20590; or call the toll-free Vehicle Safety Hotline at 1-888-327-4236 (TTY: 1-800-424-9153); or go to <http://www.safercar.gov>.

We apologize for any inconvenience this matter may cause; however we are taking this action to help ensure your safety and continued satisfaction with your vehicle.

Sincerely,

Volkswagen Customer Protection

Customer Letter Example (Canada)

<MONTH YEAR>

<CUSTOMER NAME>

<CUSTOMER ADDRESS>

<CUSTOMER CITY STATE ZIPCODE>

This notice applies to your vehicle: <MODEL YEAR> <BRAND> <CARLINE>, <VIN>

Transport Canada Recall: 2021-496

Subject: Safety Recall 24HH - Engine Control Unit (ECU) Software

Dear Volkswagen Owner,

This notice is sent to you in accordance with the requirements of the *Motor Vehicle Safety Act*. This is to inform you that your vehicle may contain a defect that could affect the safety of a person. Our records show that you are the owner of a vehicle affected by this action.

- What is the issue?** Vehicles included in this recall are equipped with an all-wheel drive powertrain and have a specific software version installed in the engine control unit that, under specific conditions (high ambient temperatures, high engine load, A/C on), may lead to a stalling condition when coming to a stop. The engine can be immediately restarted manually. An engine that stalls while coming to a stop (20 MPH) may increase the risk of a crash.
- What will we do?** To correct this defect, your authorized Volkswagen dealer will update the engine control unit (ECU) software. This work will take about an hour to complete and will be performed for you free of charge. Please keep in mind that your dealer may need additional time for the preparation of the repair, as well as to accommodate their daily workshop schedule.
- What should you do?** Please contact your authorized Volkswagen dealer without delay to schedule this recall repair.
- Lease vehicles and address changes** If you are the lessor and registered owner of the vehicle identified in this letter, you shall forward this letter (and any subsequent notice, if applicable) to the lessee within ten (10) days of receipt. If you have changed your address or sold the vehicle identified in this letter, please fill out the enclosed prepaid Owner Reply Card and mail it to us so we can update our records.
- Can we assist you further?** If your authorized Volkswagen dealer fails or is unable to complete this work free of charge within a reasonable time, please contact Customer Relations, Monday through Friday from 8AM to 8PM EST by phone at 1-800-822-8987 or via our "Contact Us" page at www.vw.ca.

We apologize for any inconvenience this matter may cause; however we are taking this action to help ensure your safety and continued satisfaction with your vehicle.

Sincerely,

Volkswagen Customer Protection

Required Tools



Battery Tester/Charger capable of **minimum 70 Amp** continuous supply



Diagnostic Tester
-VAS6150X/VAS6160X-
(or equivalent)

Repair Instruction

Section A - Check for Previous Repair

TIP

If Campaign Completion label is present, no further work is required.

Applicable criteria ID(s)	Campaign/Action Status
01 ← 2	Open ← 1

EXAMPLE

Campaign/Action	Start	Designation
← 3 →	2015-11-10	W-SERV_ACT -
	2018-12-13	RECALL -
	2017-05-16	A-RECALL -

EXAMPLE

- Enter the VIN in Elsa and proceed to the “Campaign/Action” screen.

TIP

On the date of repair, print this screen and keep a copy with the repair order.

- Confirm the Campaign/Action is open <arrow 1>. If the status is closed, no further work is required.
- Note the Applicable Criteria ID <arrow 2> for use in determining the correct work to be done and corresponding parts associated.

CRITICAL REPAIR STEP



If multiple software update Campaign/Actions are open, they must be performed in order of the Start date <arrow 3>. The oldest should be performed first.

- **All Safety Recalls must be completed prior to completing this campaign.**
- **Proceed to Section B.**

Section B – Update Engine Control Module Software

NOTE

Prior to launching the VAS Diagnostic Tester and starting an update, ensure the following conditions are met;

- ✓ **The ODIS software is completely up to date.**
 - Refer to the “Alerts” section on ServiceNet home page for the current ODIS version.
- ✓ **The battery charger is connected to the vehicle battery and remains connected for the duration of the software update.**
 - Battery voltage must remain above 12.5 volts for the duration of the software update. Failure to do so may cause the update to fail, which could result in damage to the control module. Control modules damaged by insufficient voltage will not be covered.
- ✓ **The screen saver and power saving settings are off.**
 - Failure to do so may result in the tester entering power save mode during the software update, which could result in damage to the control module.
- ✓ **The VAS Diagnostic Tester is plugged in using the supplied power adapters.**
 - Under no circumstances should the tester be used on battery power alone during the software update. Failure to do so may result in the tester powering off during the update, which could result in damage to the control module.
- ✓ **The VAS Diagnostics Interface MUST ONLY be connected to the tester with a USB cable.**
 - Performing a software update using a Bluetooth or WiFi connection increases the risk of losing connection during the update, which could result in damage to the control module. It also greatly increases the time required to perform the update. Requests for additional time or parts will be denied if the GFF log shows the update was performed using Bluetooth or WiFi.

WARNING

Radiator Fan(s) may cycle ON high speed during the Update Process! There is a serious risk that personal injury may result if contact is made with spinning fan blades. Keep hands and all objects away from Radiator Fan(s) during Update Process!

TIP

To Update-Programming using SVM, review and follow instructions in Technical Bulletin 2014603: *Software Version Management (SVM) Operating Instructions*.

The SVM Process must be completed in its entirety so the database receives the update confirmation response. A warranty claim may not be reimbursed if there is no confirmation response to support the claim.

 **NOTE**

- Damages resulting from improper repair or failure to follow these work instructions are the dealer's responsibility and are not eligible for reimbursement under this action.
- Diagnosis and repair of pre-existing conditions in the vehicle are not covered under this action.

 **NOTE**

- All campaign software updates must be completed during a single, standalone ODIS Diagnostic Session. You must fully complete this campaign and send all logs before beginning any other campaigns or operations.
- If there are any ODIS "Hot-Fix" patches installed, they must be removed from the scan tool before beginning this operation. ODIS "Hot-Fix" patches may affect the update process.

- Open the hood.
- Open the battery cover.
- Switch the ignition on.
- Apply the parking brake.
- Switch off all consumers (headlights, heated seats, climate control, etc.).
- Connect the VAS6150X/VAS6160X Diagnostic Tester to the vehicle.
- Start the ODIS program.
- Attach a Battery Tester/Charger **capable of minimum 70 Amp** continuous supply.

 **NOTE**

Vehicles with Battery Monitoring Control Module -J367- and/or an EFB Battery:

When connecting the charger to the battery, connect the positive cable to the positive terminal of the battery and connect the negative cable to the grounding lug on the chassis. **DO NOT** connect the ground cable directly to negative terminal of the battery.

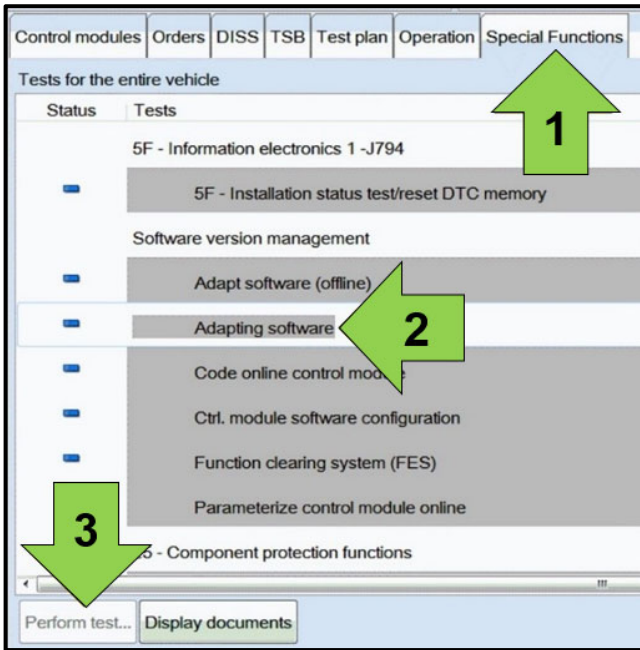
- Turn the hazards on.

 **CAUTION**

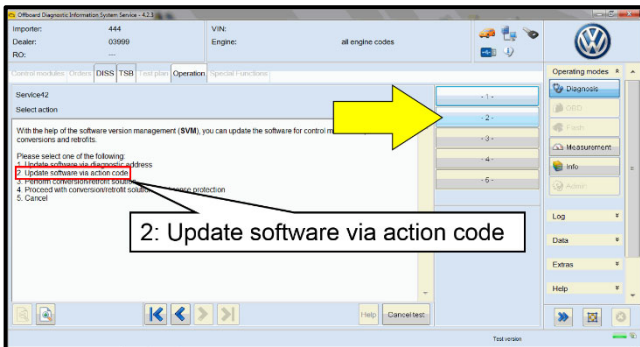
The procedure may cancel itself if the hazard warning lights are not switched on. The hazard warning lights prevent the system from switching to bus sleep mode during the update.



- Confirm that scan tool is communicating with the diagnostic head by USB <Green Arrow>.
 - If the Bluetooth symbol is shown <Red Arrow> then disconnect the diagnostic head from the vehicle and reconnect the USB cable to the diagnostic head and then reattach to the vehicle.
- Upon ODIS startup, verify the “Diagnosis” operating mode is selected <as shown>.

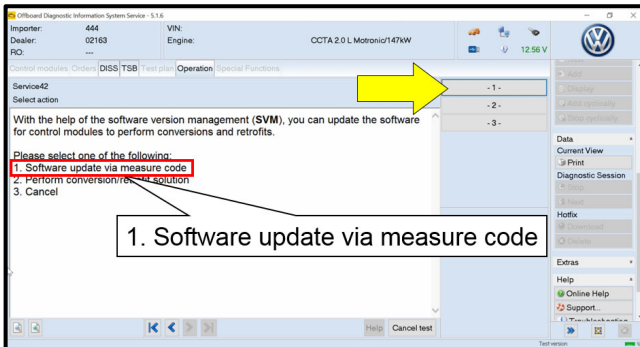


- Once the GFF scan is complete, select “Special functions” <arrow 1>, then “Adapting software” <arrow 2>, then select “Perform test” <arrow 3>.

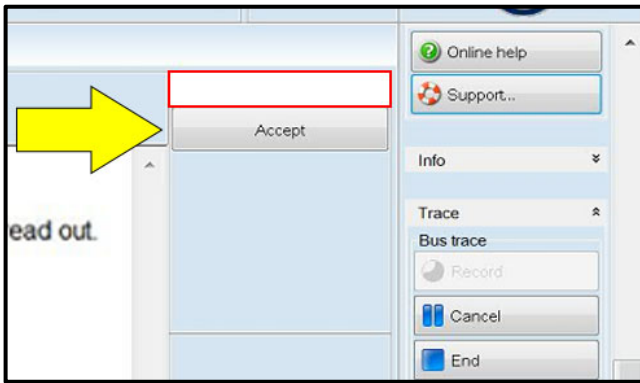


- Select the correct option to “Update software via action code” OR “Software update via measured code”.

NOTE
The different options to perform the SVM operation may vary based on model.



The repair information in this document is intended for use only by skilled technicians who have the proper tools, equipment and training to correctly and safely maintain your vehicle. These procedures are not intended to be attempted by “do-it-yourselfers,” and you should not assume this document applies to your vehicle, or that your vehicle has the condition described. To determine whether this information applies, contact an authorized Volkswagen dealer. ©2022 Volkswagen Group of America, Inc. and Volkswagen Canada. All Rights Reserved.



NOTE

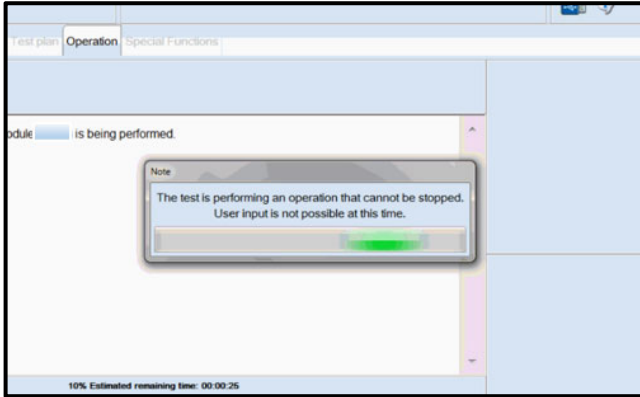
Using Bluetooth or WiFi for this action is PROHIBITED!

Damage caused to electronic components (e.g. ECM, TCM, etc.) during the SVM flash process is not covered.

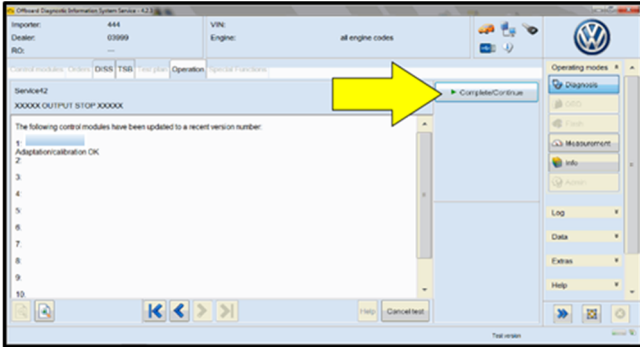
- Enter the corrective action code (SVM code) as listed below.

SVM code
49C5

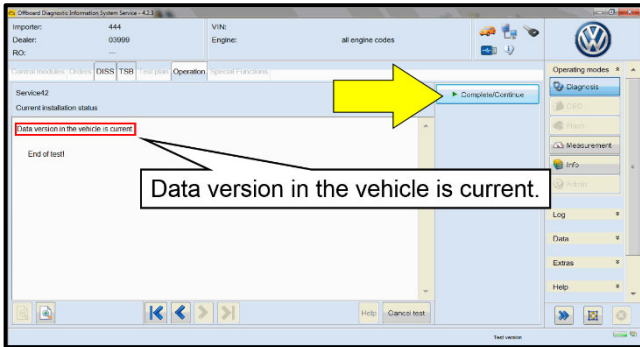
- Select "Accept" <arrow> and follow the on screen prompts.
- During the flash, this screen appears when each operation is performed:



- Select Complete/Continue <arrow> after each operation is completed.



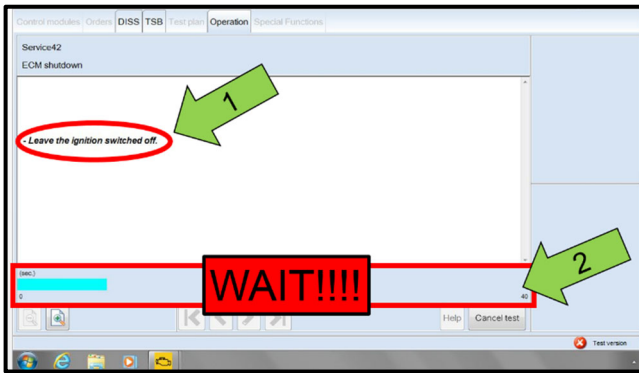
- When the SVM update is complete a confirmation message is displayed <as shown>.
- Select "Complete/Continue" <arrow>.



TIP

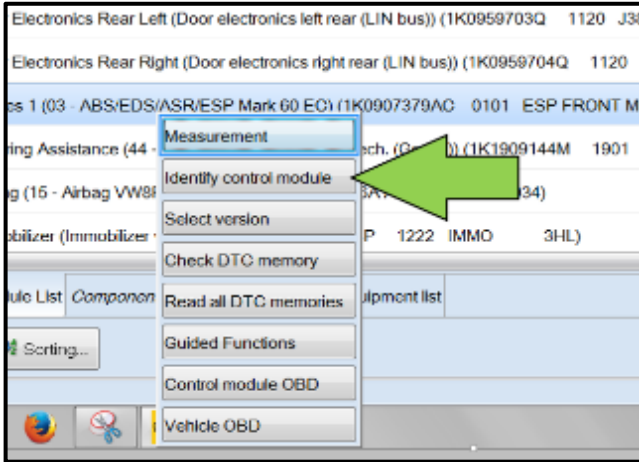
If the software in the vehicle is already current, a message may appear indicating this. If this occurs, complete the ODIS test plan and send the diagnostic protocol online.

The repair information in this document is intended for use only by skilled technicians who have the proper tools, equipment and training to correctly and safely maintain your vehicle. These procedures are not intended to be attempted by "do-it-yourselfers," and you should not assume this document applies to your vehicle, or that your vehicle has the condition described. To determine whether this information applies, contact an authorized Volkswagen dealer. ©2022 Volkswagen Group of America, Inc. and Volkswagen Canada. All Rights Reserved.



NOTE

- It is **IMPERATIVE** that **ALL** of the ignition cycle on/off delay requests are fulfilled in their entirety during this flash process <arrow 1>.
- Failing to wait for the ignition on/off timing cycle to complete (progress bar and countdown timer <arrow 2>) before cycling the ignition on/off **MAY** damage a control module.
- Damage to control modules as a result of failing to wait the specified time displayed by the progress bar and countdown timer <arrow 2> are **NOT** covered under this action.



- After the software update is completed and before sending the GFF Log Online:
 - Select the “Control Module” tab.
 - Scroll down and right click on the module that was updated (0001).
 - Select “Identify Control Module” <arrow>.

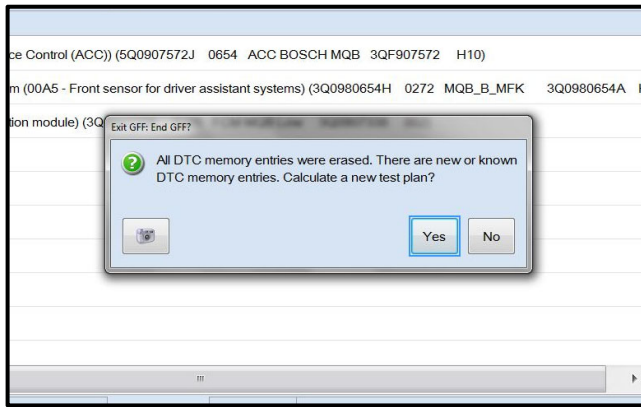
CRITICAL REPAIR STEP



In rare cases, a P0606 fault with symptom code 32902 may set after three key cycles after performing a software update. In order to prevent a comeback the following steps must be followed.

- Turn off the ignition.
- Disconnect the diagnostic head from the OBD port.
- Wait 30 seconds.
- Turn on the ignition.
- Perform three key cycles (wait 30 seconds between each ignition off to on cycle).
- Reconnect the diagnostic head to the OBD port.
- Re-identify 0001-Engine Control Module.
- If, after re-identifying the ECM, fault P0606 with Symptom Code 32902 is stored:
 - See the “Important Repair Steps” at the end of this procedure.
- If no faults are stored:
 - Proceed to the next step.

The repair information in this document is intended for use only by skilled technicians who have the proper tools, equipment and training to correctly and safely maintain your vehicle. These procedures are not intended to be attempted by “do-it-yourselfers,” and you should not assume this document applies to your vehicle, or that your vehicle has the condition described. To determine whether this information applies, contact an authorized Volkswagen dealer. ©2022 Volkswagen Group of America, Inc. and Volkswagen Canada. All Rights Reserved.



- Exit GFF and send diagnostic protocol online when prompted.

NOTE

Static communication faults may store in various control modules during the flash. These faults can only be cleared by following one of these steps:

- Drive the vehicle a short distance (around the parking lot, for example).
 - After selecting “Yes”, turn the ignition off for 30 seconds, turn it back on and repeat the GFF exit program.
 - Clear faults using OBD (an additional key cycle may also be required).
- Release the parking brake.
 - Disconnect the VAS tester.
 - Switch off and disconnect the battery charger.
 - Reinstall the battery cover.

Proceed to Section C

IMPORTANT REPAIR STEPS

In rare cases, a P0606 fault with symptom code 32902 may set after three key cycles after performing a software update. In order to prevent a comeback repair these steps must be followed.

- If MIL is illuminated, check ECM fault memory using Control Module OBD.
- If fault P0606 *with symptom code 32902* is stored:
 - Upload a copy of the GFF log to GFF Paperless and/or save a copy of the OBD log for review (*10 additional TU can be paid ONLY if fault P0606 with symptom code 32902 is stored AND a GFF Paperless log is available or an OBD log showing the fault can be provided*)
 - Follow these steps to clear the fault:
 - Put the car into “Transport Mode” from the special functions tab using Operating Mode “Diagnosis”.
 - Using Operating Mode “OBD”, select the ECM and go to “Control Module OBD > Adaptation”.
 - In Adaptation, in the filter box type “Protective Function”. Select Protective Function and double click on the input field and change from Enabled to OFF, then select Apply.
 - If you receive an error message, click on the green drop down arrow and select DTC memory. Click on OBD systems and clear faults.
 - Switch to Operating Mode “Diagnosis”. Under the Special Functions tab deactivate “Transport Mode”.
 - Return to ECM Control Module OBD. The DTC P0606 should now be “passive”. Erase DTC by clicking on OBD systems and clear faults.
 - From ECM Control Module OBD, select Adaptation.
 - In Adaptation, find “Protective Function” and change from OFF to Enabled.
- If the MIL is on and any fault other than P0606 *with symptom code 32902* is stored:
 - Perform normal diagnosis of fault.
 - Diagnosis and repair of any fault other than P0606 *with symptom code 32902* will not be covered under this action.

Section C – Campaign Completion Label

- Fill out and affix Campaign Completion Label, part number CAMP 010 000, next to the vehicle emission control information label.

 **TIP**

Ensure Campaign Completion Label does not cover any existing label(s).