



Mercedes-Benz

Campaign No. 2021070033, August 2021

TO: ALL MERCEDES-BENZ CENTERS

SUBJECT: **Models various**  
**Model year 2020-2021****Check the Side Crash Sensor (Front doors only)**

Mercedes-Benz AG (“MBAG”), the manufacturer of Mercedes-Benz vehicles, has determined that on certain Model Year (“MY”) 2020-2021 E-Class (213 platform), S-Class (222 platform), GLC (253 platform), CLS (257 platform), AMG GT 4-doors coupe (290 platform) and G-Class (463 platform) vehicles, the locking mechanism for the electrical connector on the side-impact crash sensors might not meet current production specifications. In this case, the side-impact crash sensor connector might loosen over the vehicle’s lifetime. In the event of a side impact crash, this may lead to a delayed activation of the restraint systems, which could increase the risk of injury. When the issue occurs, a specific warning message is displayed and the SRS warning lamp is illuminated in the instrument cluster. An authorized Mercedes-Benz dealer will check the side-impact crash sensors in the doors on the affected vehicles and replace them, if necessary.

Prior to performing this Campaign:

- VMI must always be checked before performing campaigns to verify that the campaign is required on a specific vehicle. Always check for any other open campaigns, and perform accordingly.
- Please review the entire Campaign bulletin and follow the repair procedure exactly as described.

Please note that Recall Campaigns **do not expire** and may also be performed on a vehicle with a vehicle status indicator.

Approximately 404 vehicles are affected.

Order No. P-RC-2021070033

This bulletin has been created and maintained in accordance with MBUSA-SLP S423QH001, Document and Data Control, and MBUSA-SLP S424HH001, Control of Quality Records.

## Check airbag pressure sensors in front doors, replace if necessary

Models 213, 222, 253, 257, and 290

### Check/test procedure

1. Remove door lining on left and right front doors.
  - i** For basic data of models **213** and **253**, see **AR72.10-P-1000LW**.
  - i** For basic data of model **222**, see **AR72.10-P-1000LF**.
  - i** For basic data of models **257** and **290**, see **AR72.10-P-6575FR**.
2. Disconnect plug from airbag pressure sensors (**A, Figure 1**) of front doors and check whether two catch tabs (**B, Figure 2**) are present.
  - i** Door modules need **not** be removed.
  - i** There must be **two catch tabs**.
  - i** Figure 3 is **not OK**.



Figure 1, shown on model 213

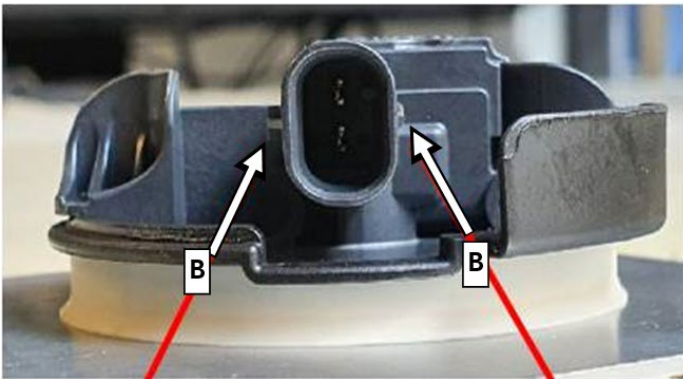


Figure 2

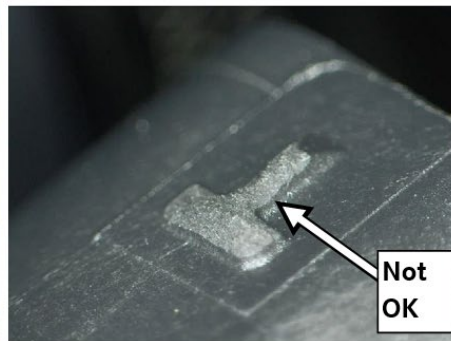
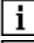
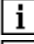
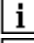
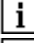
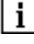


Figure 3, not OK

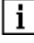
- a. Only **one catch tab** present: Carry out **work procedure**.
- b. **Two catch tabs** present: **End measure**.

**Work procedure**

1. Replace defective airbag pressure sensor.
  -  Up to two airbag pressure sensors may be affected.
  -  For basic data of models **213** and **253**, see **AR91.60-P-0760LW**.
  -  For basic data of model **222**, see **AR91.60-P-0760LF**.
  -  For basic data of models **257** and **290**, see **AR91.60-P-0760FR**.
  -  Contrary to the work instructions in WIS, it is not necessary to check the Supplemental Restraint System (SRS) with the diagnostic system.
2. Assemble in reverse order.

**Primary Parts Information**

Qty.	Part Name	Part Number
As required	Airbag pressure sensor	A 213 905 14 00

 Small parts such as screws, lock nuts, sealing rings, cable ties, fluids, sealant, etc. are not listed in the parts list. The required small parts are taken into account in the budgeting.

 **Note:**

- The following allowable labor operation should be used when submitting a warranty claim for this repair:

**Warranty Information**

- Operation: (02-0637)** Check airbag pressure sensor in left and right front doors  
**Models: 253, 257, and 290**  
Includes: Remove/install 2 door trims
- (02-0637)** Check airbag pressure sensor in left and right front doors  
**Models: 213 and 222**  
Includes: Remove/install 2 door trims
- (02-0638)** Replace one airbag pressure sensor (after check)  
Includes: Disconnect ground line of starter battery
- (02-0639)** Replace a further airbag pressure sensor (one pressure sensor removed)

Damage Code	Operation Number	Labor Time (hrs.)
91 931 12	02-0637 <b>Models: 253, 257, and 290</b>	0.9
	02-0637 <b>Models: 213 and 222</b>	1.0
	02-0638	0.3
	02-0639	0.1

 **Note**

Always check ASRA for the current OP-Code times. Labor times are subject to change and updates may not be reflected in this document.