

Safety Recall 4921G – 2004-2007 Mazda3 Driver Air Bag Steering Wheel Cover Replacement

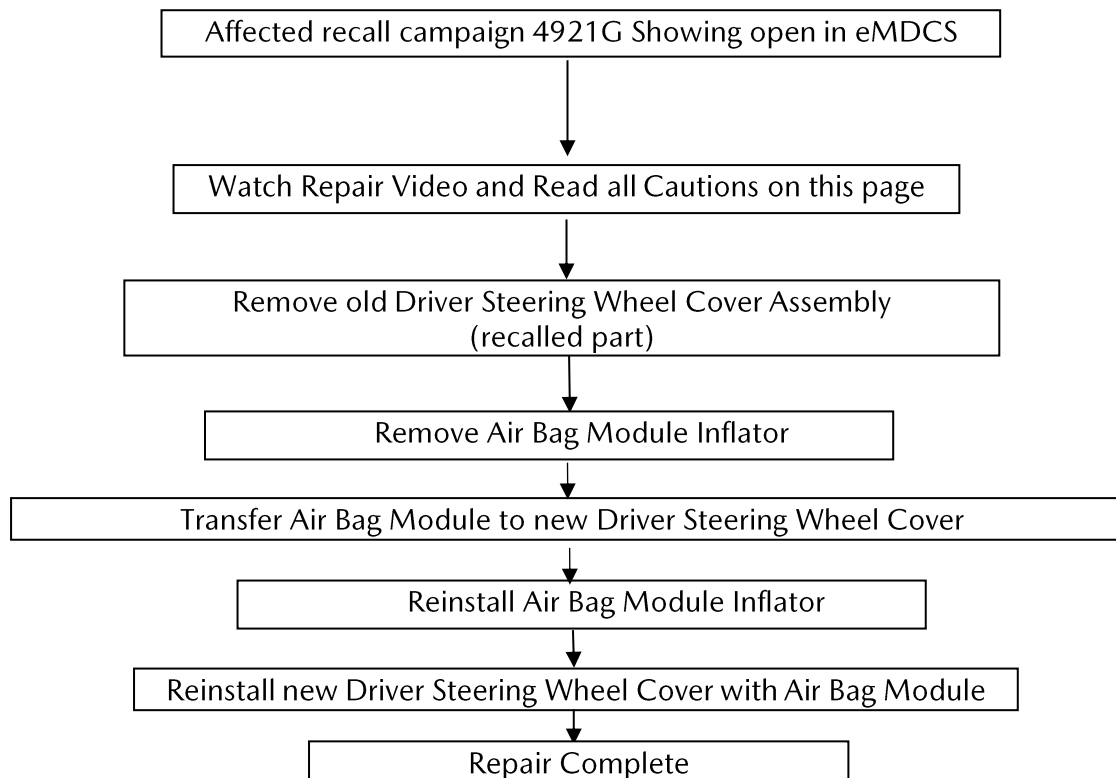
A. VEHICLE INSPECTION PROCEDURE

Verify that the vehicle is within the following ranges:

Model	Subject VIN range	Subject production date range
2004-2007 Mazda3	JM1 BK**** 41 100046 - 217952 JM1 BK**** 51 192363 - 350581 JM1 BK**** 61 400001 - 546533 JM1 BK**** 71 600001 - 601664	From July 24, 2003 through June 22, 2006

The asterisk symbol "*" can be any letter or number.

Repair Flow Chart



CAUTION

- **Please watch the removal and replacement videos under this recall on MGSS – see links below.**
- **Use latex or vinyl, powder-free gloves during this repair.**
- **Do not use any power tools to remove the steering wheel air bag cover.**
- **Use the smallest pair of side cutting pliers necessary to carefully cut the plastic of the cover.**
- **The air bag material will tear easily. If you tear or rip the air bag material, please order and replace the air bag module (cannot be claimed under 4921G) and notify Dealer Recall Help before the vehicle leaves the dealership.**

B. REPAIR PROCEDURE

1. Parts included

Steering Wheel Air Bag Cover & Nuts

Four air bag inflator nuts are included and will be used. **You will have to remove the inflator from the module to prevent a possible deployment during this procedure from static electricity.** Once the module has been installed in the new cover, then reinstall the inflator and use the replacement nuts.



#	Description	Note
1	Air Bag Cover	BPYK-57-K00
2	Nuts (qty 4)	Replace when re-assembling inflator

2. Remove the Steering Wheel Air Bag Cover: **DO NOT USE POWER TOOLS TO REMOVE BOLTS.** Using any type of power tool may shear the inflator stud and require replacement of the airbag module assembly. This is not covered under this recall and will be the dealer's responsibility.

Follow Driver Side Air Bag Module Removal Procedure Here: [DRIVER-SIDE AIR BAG MODULE REMOVAL/INSTALLATION](#)

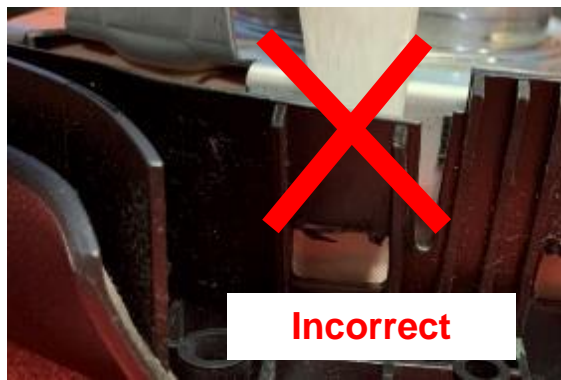
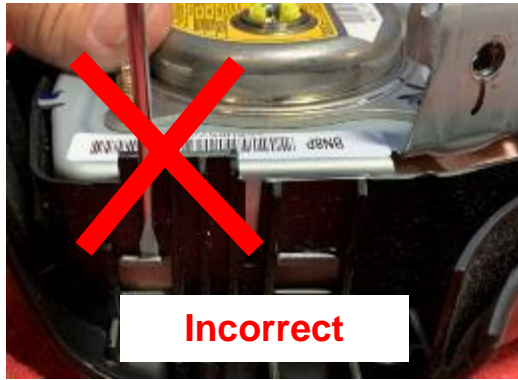
Tools Needed: Side Cutting Pliers and Needle Nose Pliers (smallest possible). **NOTE:** The blue plastic pieces in the video are not required to be used.

IMPORTANT: [Click Here for the 4921G Air Bag Module Removal and Installation Video](#)

LINK: https://portal.mazdausa.com/pokinfromgr/library\MAZDA\VIDEOS\en_us\video\4921G_video.mp4

NOTE: It is best to download this video to your desktop and open the video with Windows Media Player, iTunes or similar program. The video may not open in your browser due to the size.

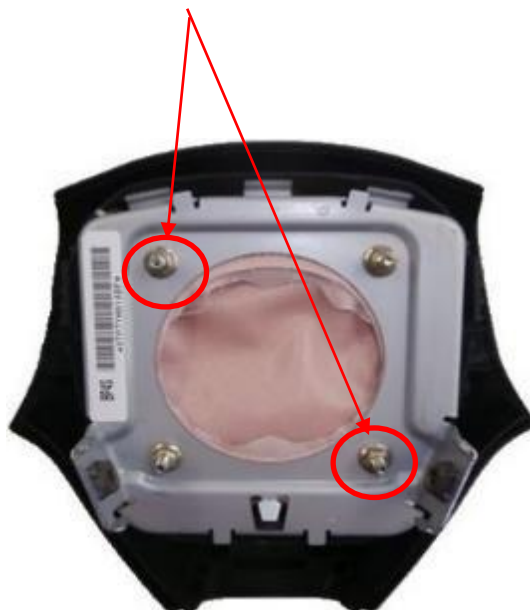
CAUTION: ONLY USE SIDE CUTTING PLIERS TO CUT THE STEERING WHEEL COVER PLASTIC IN ORDER TO REMOVE THE INFLATOR MODULE. ALSO MAKE SURE YOU ARE ONLY CUTTING THE PLASTIC BETWEEN THE AIR BAG MODULE METAL FRAME HOUSING AND THE STEERING WHEEL COVER. DO NOT CUT OR PRY AT THE PINK COLOR AIR BAG MATERIAL. GOING TOO DEEP OR USING THE INCORRECT TOOL WILL LIKELY CUT OR SCRATCH THE AIR BAG MATERIAL. IF THIS HAPPENS THE AIRBAG MODULE ASSEMBLY MUST BE REPLACED AND IS NOT COVERED UNDER THIS RECALL.



3. Remove the 4 nuts in sequence shown below holding the air bag inflator onto the air bag module. Put the Inflator as shown in the picture below. (Face up connector side) on a non-conductive surface like a rubber floor mat or similar.



4. Use at least 2 original nuts to temporarily fasten the Housing in order to avoid the airbag falling off during operation

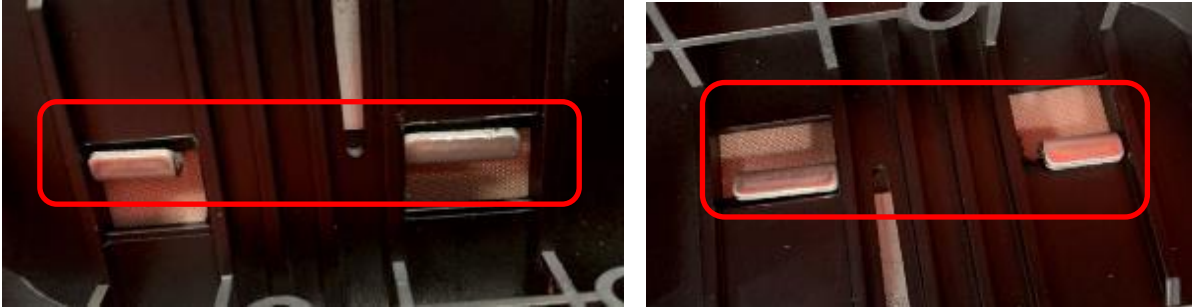


5. Remove the Air Bag Module from the Driver Steering Wheel Cover

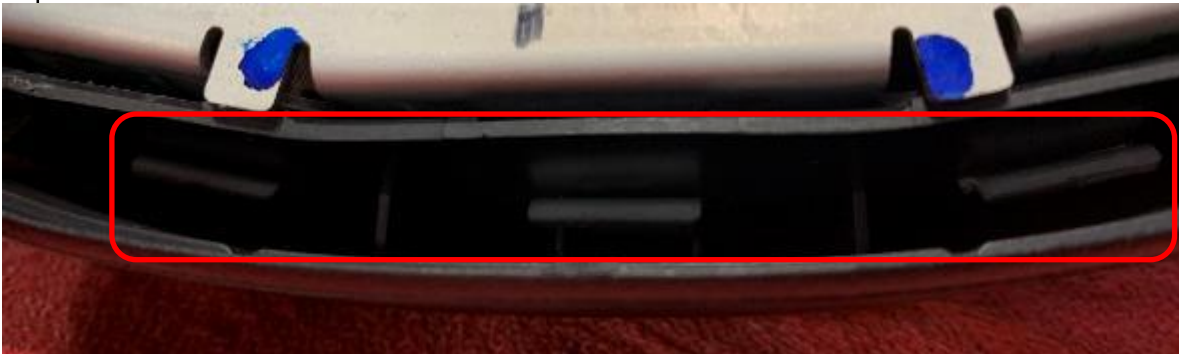
Note: Some of the pictures show the inflator still installed. Please ensure the inflator has been removed.

- A. The Air Bag Module frame attaches to the cover with 2 snap clips/tabs on each side and 3 each on the bottom and top (10 clips/tabs total). See photos.

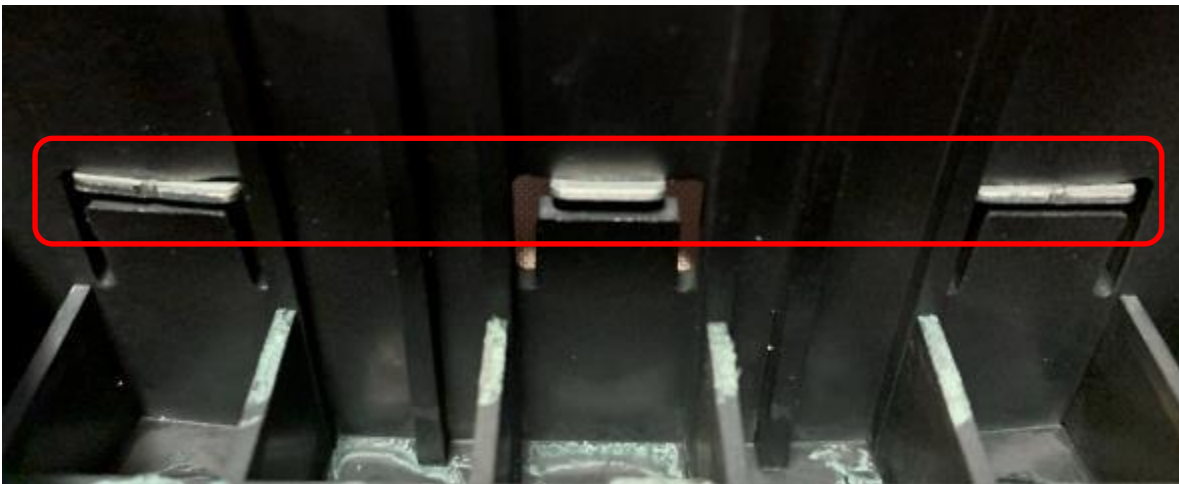
Right and Left Side View



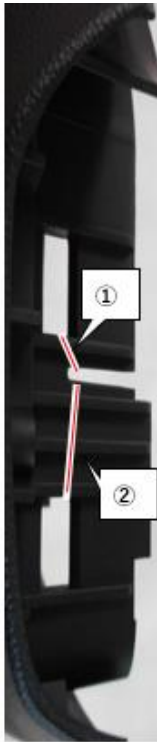
Top View



Bottom View



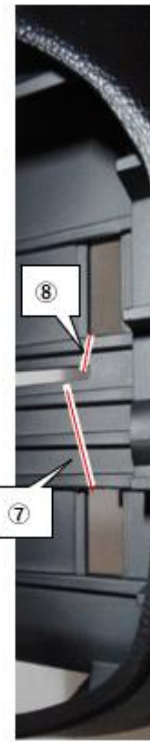
- B. Using the **Smallest Side Cutters available, Gently** cut the plastic at each numbered vertical slot to allow for easy removal of each clip between the air bag module frame and steering wheel cover housing. **DO NOT ALLOW THE SIDE CUTTER TO COME CLOSE TO THE METAL BAG HOUSING**



Left Side



Bottom View



Right Side

- C. Use a pair of small needle nose pliers to grasp the cut plastic, bend outwards and twist to remove.



6. Once all clips are loose, gently pull out the air bag module steadily in a straight up motion. You may need pull up the back, then the front or the other way around. **NOTE: Inflator is shown in this picture. It must be removed.**



7. Once removed, place the air bag module on a scratch free surface as shown below and visually check the air bag material for any cuts or tears. The top of the air bag will have a "X" pattern and this is normal. **If there are any cuts or tears, the airbag must be replaced. If torn please contact Dealer Recall Help with a photo of the tear and what caused the tear/rip. Also inspect the 10 tabs to ensure they are not deformed.**

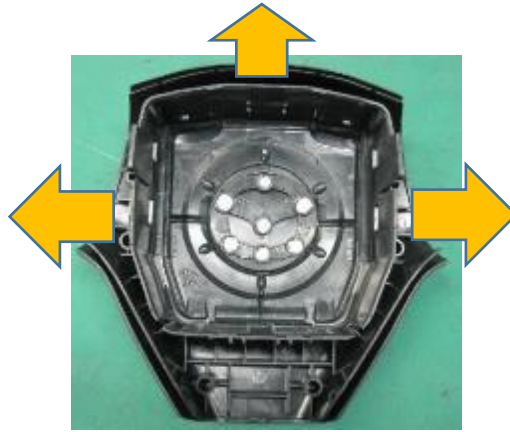
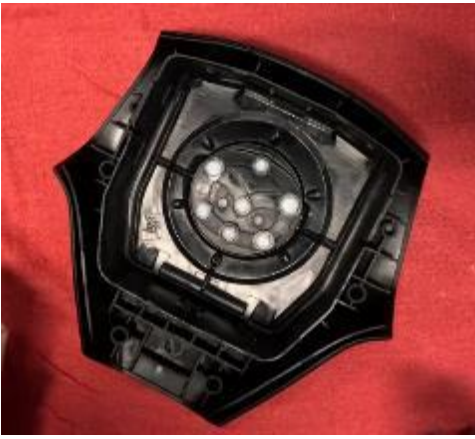


"X" Pattern

8. Make sure there is no contamination in the airbag.



9. Install the air bag module assembly into the new air bag cover. Lay the new part on a scratch-free surface such as a terry towel. Make sure there is no contamination in the new steering cover as well. Make sure the new cover is at least room temperature, so it is flexible and grab and stretch the new cover 10 times in each direction .



10. Insert the air bag module in a straight down motion into the plastic cover housing.



A. NOTE: The following pictures are present for clarity and show the inflator already installed. The inflator will be installed once the air bag module is fully inserted!

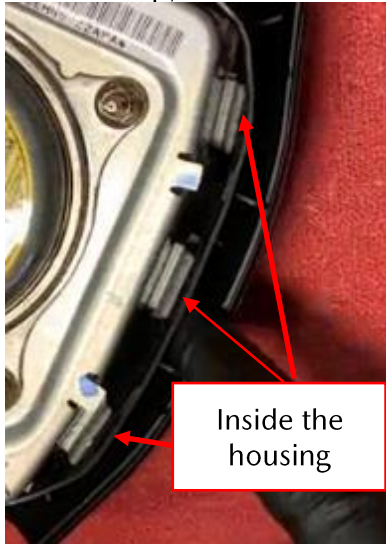
B. Insert so all 10 clips are just inside the very top of the air bag cover.





- C. Continue to press down on the air bag module inflator being careful not to damage the air bag connectors. Press down until the metal frame clips are about halfway down inside the air bag cover. Notice the clips are inside the air bag cover on all 4 sides.

Top/Bottom View



Side View

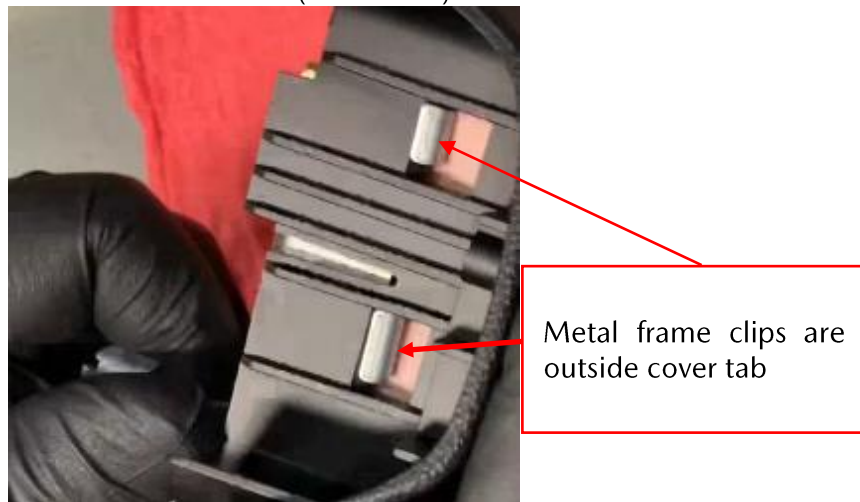


11. Once all clips are recessed inside the cover, press straight down or by each corner until you see and hear all 10 tabs/clips snap into place (3 on the top and bottom, 2 on each side).

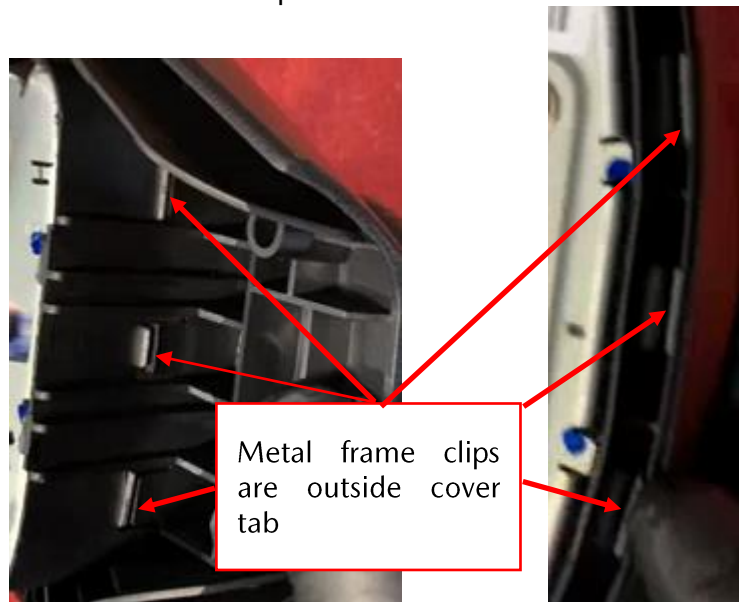


Make sure that all clips are in the proper position and if needed pull up on the metal frame or plastic housing gently to ensure a good fitment.

Side View (both sides)



Top/Bottom View



12. Perform a final check and adjustment if needed to ensure the alignment of the airbag is correct. The 4 locations of stay tabs needs to be located above the steering cover edge. Note there are 4 tabs.



A	Top	B	Bottom
---	-----	---	--------

- If all 4 stay tabs are not above the steering cover edge, pull up the assembly, while holding the bracket bottom.



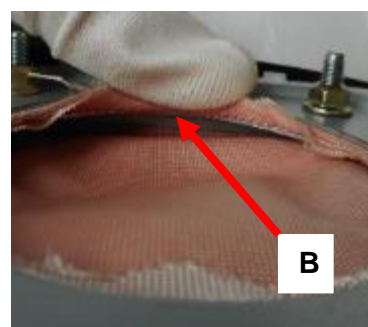
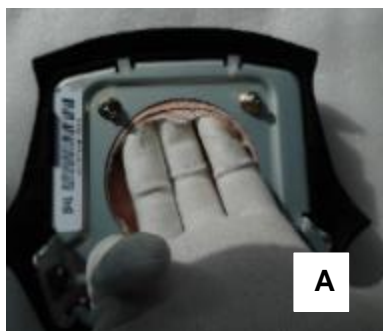
A	Top	B	Bottom
----------	-----	----------	--------

- Check and adjust the top side of the steering cover to correctly align the stay tab.



- If needed insert fingers at housing edge to pull up until the tabs are properly installed.

NOTE: Do not touch/damage beyond the Retainer Ring Edge as shown below.

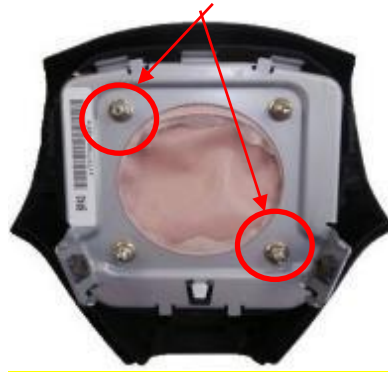


A	Pull up	B	Retainer ring edge
----------	---------	----------	--------------------

**REPAIR PROCEDURE CONTINUED ON NEXT
PAGE**

Installation of Inflator

13. Remove the two used nuts that were temporarily used to fasten airbag and housing. Discard all old/used nuts as they must not be reused.

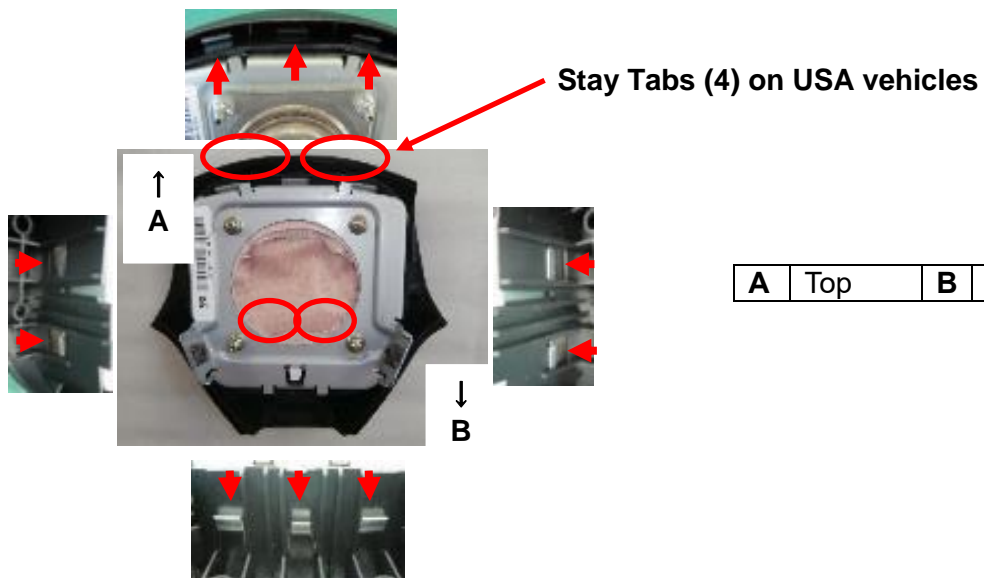


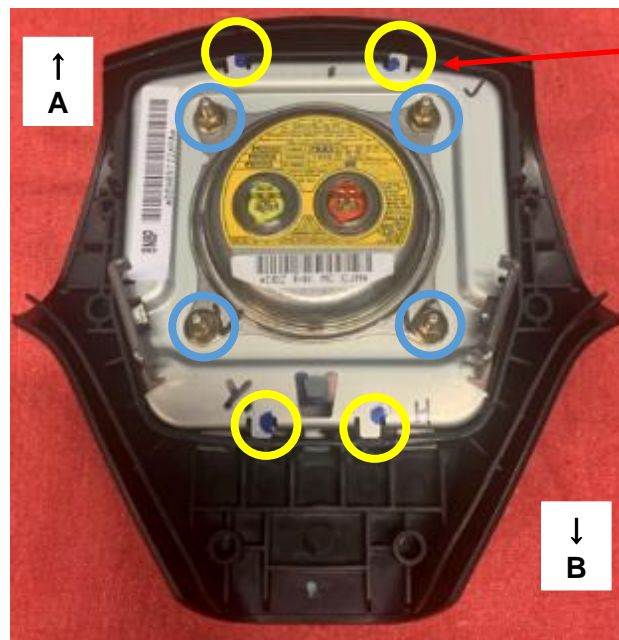
14. Install the inflator using new nuts by finger tight first, then tight with the specified torque in the order of ①-②-③-④ as shown in figure. Tightening nut torque: **2.9 – 5.9 N·m, 26 (in-lbs) – 52 (in-lbs). This is 2-4 ft-lbs!**

CAUTION: Do not overtighten the nuts. Make sure to set the correct tightening torque.



Final inspection: Confirm that all 10 tabs are properly installed, the 4 stay-tabs are on the cover edge and all 4 nuts are new and correctly mounted. Accordingly, mark each point, as checked and found to be OK, using a white pen or equivalent.





Stay Tabs (4) on
USA vehicles

A	Top	B	Bottom
---	-----	---	--------

15. Follow Driver Side Air Bag Module Installation Procedure Here: [DRIVER-SIDE AIR BAG MODULE REMOVAL/INSTALLATION](#)

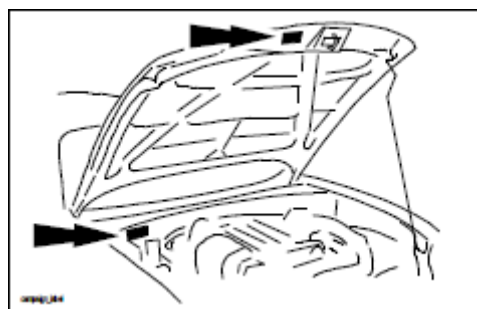
C. CAMPAIGN LABEL INSTALLATION:

1. Fill out a black "Campaign Label" (9999-95-065A-06) with Campaign No: "4921G", your dealer code, today's date.

CAMPAIGN LABEL	
CAMPAIGN NO:	_____
DEALER CODE:	_____
DATE:	__ / __ / __

PIN 9999-95-065A-06

2. Affix it to the hood or bulkhead as shown:



3. Return the vehicle to customer.

END OF REPAIR PROCEDURE