



WARRANTY BULLETIN SAFETY CAMPAIGN



⚠ WARNING: All involved customers must be notified, all involved units must be corrected as per instruction herein.

Campaign no.: 2021-0006

June 4, 2021

Subject: **Move I 1500 Extended Trailer Spindle Weld Failure - Possible Wheel Loss**

No. **2021-4**

MODEL YEAR	MODEL	SERIAL NUMBERS
2021	Move I 1500 Extended Trailer	Refer to campaign monitoring to validate involved vehicle serial numbers
IMPORTANT – When a vehicle comes in for service, always type the VIN in Knowledge Center to check for pending campaigns or alerts.		



PROBLEM

On a limited number of units manufactured by Karavan Trailers, the wheel spindles were improperly welded to the axle. In some situations, this could result in a wheel loss, increasing the risk of a crash.

SOLUTION

Replace axle assembly.

PARTS REQUIRED

Order parts through Karavan using the following informations. The parts will be sent free of charge.

The trailer VIN and the axle serial number will have to be provided to Karavan Trailers to get the replacement axle.

Contact number: 920-928-6411
 Contact name: Chianna Harvey
 Working hours: 8am-4:30pm CST
 Contact email: warranty@karavantrailers.com

DESCRIPTION	PART NUMBER	QTY
Axle assembly	320-03380-A	1
Spring pad		2
U-bolt		4
0.438-14 Centerlock hex. nut		8

CORRECTIVE ACTION

Inspection

Inspect axle tag, located in the middle of the axle and take note the Batch number.

NOTE: The axle tag will be either a white sticker (as shown) or a metal plate.



TYPICAL

AFFECTED BATCH NUMBER
256
258
260

If the trailer is from one of the affected batches, proceed to *AXLE REPLACEMENT*. If not, no further action is required.

In case the batch number is not visible or missing, proceed to *AXLE REPLACEMENT*.

Axle Replacement

Lift and secure trailer. Trailer must be blocked off the ground to remove all weight from the tires.

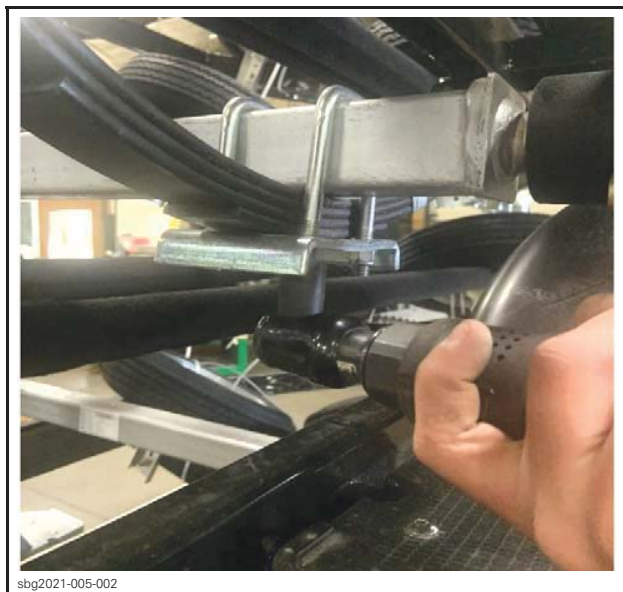
WARNING

Ensure the trailer is properly supported and unladen.

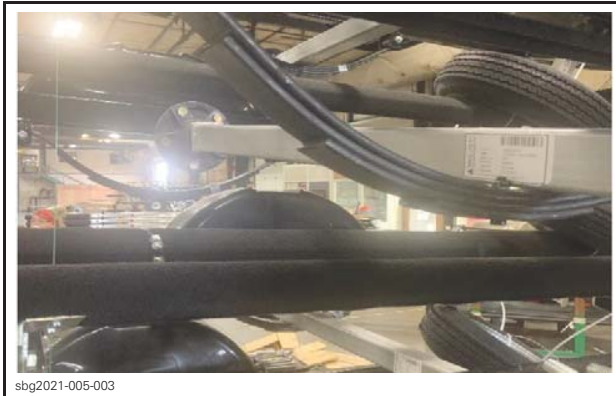
Remove both wheels.



Remove axle assembly by removing and discarding the 4 nuts, the U-bolt and the spring pad on each side.

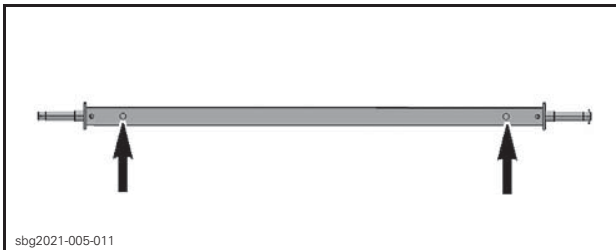


Remove axle from the trailer.



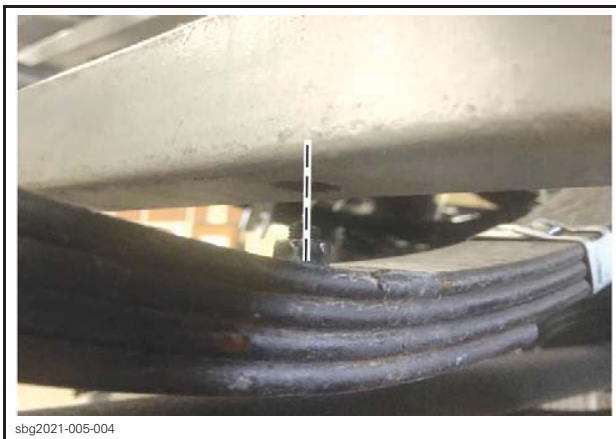
sbg2021-005-003

The installation is the reverse of the removal procedure. However, pay attention to the following. Ensure to position the new axle with the locating holes downward.



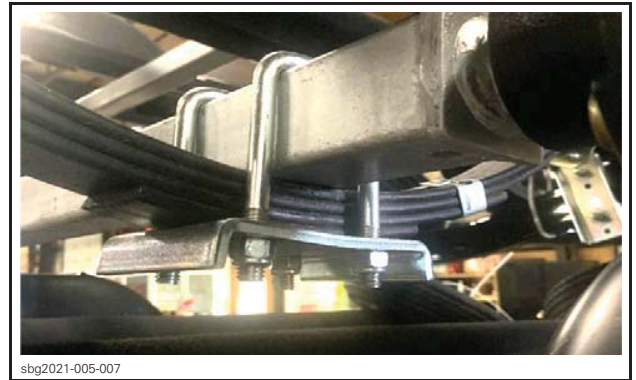
sbg2021-005-011

Line up the locating hole in the axle with the centre bolt of the spring stack.



sbg2021-005-004

Install the new U-bolts, spring pads and 0.438-14 Centerlock hex. nuts. Tighten to specification.



sbg2021-005-007

TIGHTENING TORQUE	
0.438-14 Centerlock hex. nut	34 N•m (25 lbf•ft)

Install both wheels. Ensure the taper of the lug nut is facing toward the wheel. Tighten to specification in a star pattern.



sbg2021-005-001

TIGHTENING TORQUE	
Lug nuts	108 N•m (80 lbf•ft)

Defective Axle

Remove the axle tag by cutting on each side of the axle assembly. Discard remaining of the axle assembly in compliance with the local authorities.



WARRANTY

Submit a warranty claim using the following information.

Refer to the *DEALER/DISTRIBUTOR WARRANTY GUIDE*.

Inspection Only

Product Line	PWC
Unit Model Year	2021
Campaign/Bulletin/Description	6 / 2021-4/ Spindle weld failure
*Action	
Inspect	Repair
<input checked="" type="checkbox"/>	<input type="checkbox"/>
Total Labor time	0.3 hour

Inspection and Repair

NOTE: A picture of the axle tag, cut from the axle assembly must be provided with every claim. If no pictures are included, the claim will not be processed.

Product Line	PWC
Unit Model Year	2021
Campaign/Bulletin/Description	6 / 2021-4/ Spindle weld failure
*Action	
Inspect	Repair
<input checked="" type="checkbox"/>	<input checked="" type="checkbox"/>
Total Labor time	1.0 hour

In case towing fees occur, if you need to refund the customer, proceed as follow:

TOWING FEE REFUND PROCESS	
Unit claim Type	01
Failure part number	262000291
Job code	05-00
Sub labor	262000291

NOTE: Amount without taxes. Copy of towing invoice is mandatory.