

**"DOCUMENT UNCONTROLLED IF PRINTED"**

DOC #	PROCESS NAME	PAGE	REVISION	BY	DATE
21V174	Corpus Christi, SOF-Ford, E450, Fuel Leak	1 of 1		B. Fisher	3/17/21

Read process before beginning. If you do not understand any part please contact: Brad Fisher, Service Manager at 1-866-953-5555 or by e-mail at bfisher@ARBOCsv.com

Good Mechanics safety practice must be followed on any repairs.

Safety practices should include but not be limited to properly supporting the chassis, axles, blocking tires, and a work area free of clutter.

**Complaint:** Fuel Leaking from fuel fill area under bus.

**Cause :** Fuel hose not secured correctly in production.

**Correction:** Confirm correct hose is in place for the fuel fill. Tighten clamp with socket wrench or electric drive socket. See steps below.

**Vehicles Affected:** ARBOC, Corpus Christi, SOF-Ford, E450. Gas, Bus Numbers 4529-4557.

**Labor Op code :** RC012801

**Labor Time Allowance :** .5 Per Bus

**Parts Return :** No

**Pre Authorization Required:** No

**Tools Required:**

- 17mm Wrench      9/16" Socket
- 5/8" Socket      Impact Wrench, Socket Wrench
- 5/16" Socket      Torque Wrench

**Parts Required :**

**Repair Instruction**

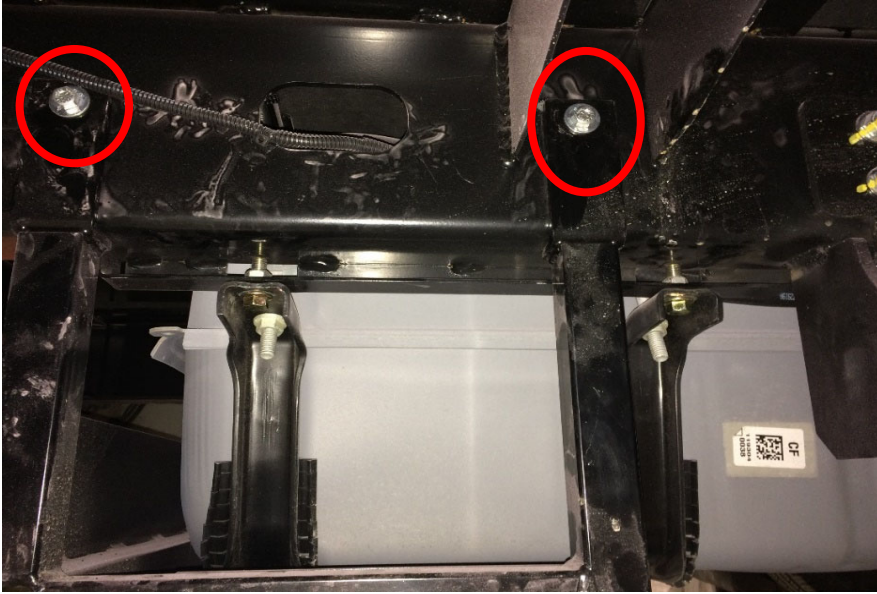
Step 1- Confirm that the correct hose is in place for the fuel fill. It should be a flexible fuel rated hose with an inner diameter of 1-1/2".



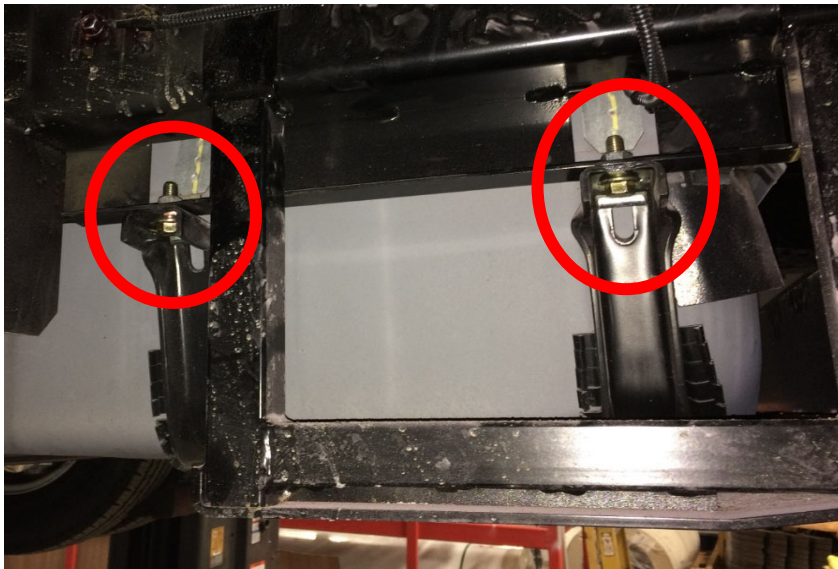
**"DOCUMENT UNCONTROLLED IF PRINTED"**

DOC #	PROCESS NAME	PAGE	REVISION	BY	DATE
<b>21V174</b>	Corpus Christi, SOF-Ford, E450, Fuel Leak	1 of 1		B. Fisher	3/17/21

Step 2- Unbolt gas tank guard using a 9/16" socket and remove.



Step 3- Loosen all four bolts (2 per side) that hold the gas tank to the frame. Use the 17mm wrench and 5/8" socket.  
NOTE: Do not completely remove bolts or drop gas tank out.

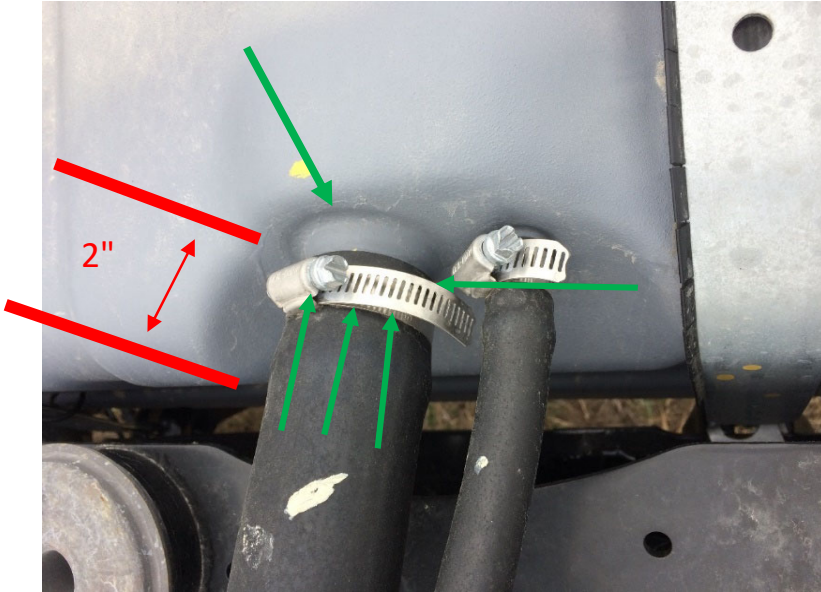


Step 4- Lower gas tank enough to access tank fill port.

**"DOCUMENT UNCONTROLLED IF PRINTED"**

DOC #	PROCESS NAME	PAGE	REVISION	BY	DATE
<b>21V174</b>	Corpus Christi, SOF-Ford, E450, Fuel Leak	1 of 1		B. Fisher	3/17/21

Step 5- Loosen hose clamp with a 5/16" socket and force hose onto barb. It should be a snug fit and have 2" of engagement.



Step 6- Slip hose clamp over the hose/barb engagement area. Tighten using a socket wrench or electric drive socket. DO NOT tighten using a screw driver.

Step 7- Confirm that plastic guarding is in place between fuel fill hose and frame cut out.



Step 8- Lift tank back into place and tighten down tank. Torque to 52ft/lbs.

Step 9- Reinstall gas tank guard. Torque to 33ft/lbs.