



SIB 66 02 21

2021-03-11

RECALL 21V-096: REARVIEW CAMERA

This Service Information bulletin (Revision 2) replaces SI B66 02 21 **dated February 2021**

What's New:

- Situation: Add new picture 4; changed picture layout, modified description
- Procedure: Edit wording for Procedure B

MODEL

F90 (M5 Sedan)	F91 (M8 Convertible)	F92 (M8 Coupe)	F93 (M8 Gran Coupe)
F95 (X5 M Sports Activity Vehicle)	F96 (X6 M Sports Activity Coupe)	F97 (X3 M Sports Activity Vehicle)	F98 (X4 M Sports Activity Coupe)
G01 (X3 Sports Activity Vehicle)	G02 (X4 Sports Activity Coupe)	G05 (X5 Sports Activity Vehicle)	G06 (X6 Sports Activity Coupe)
G07 (X7 Sports Activity Vehicle)	G12 (7 Series Sedan)	G14 (8 Series Convertible)	G15 (8 Series Coupe)
G16 (8 Series Gran Coupe)	G20 (3 Series Sedan)	G22 (4 Series Coupe)	G30 (5 Series Sedan)

AFFECTED VEHICLES

Vehicles which require this Recall Campaign to be completed will show it as "Open" when checked either in AIR, the "Service Menu" of DCSnet (Dealer Communication System), ISPA Next or Warranty Vehicle Inquiry.

SITUATION

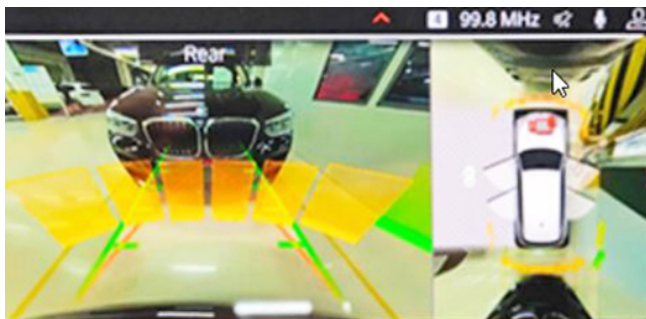
BMW AG is conducting a Voluntary Non-Compliance Recall (effective February 22, 2021) on certain Model Year 2019-2021 BMW vehicles that were produced between October 12, 2017 and November 26, 2020.

The Recall Notice and Q&A have been attached for further information.

Due to a software error, in certain cases the rearview camera image may not meet a Federal requirement. When shifting into Reverse gear, in some cases a small portion of the rearview image may be slightly obscured (due to left/right swapped images), or the screen may not illuminate. The affected vehicles must be checked and re-coded if needed as outlined in the procedure below.

There are two scenarios depending on vehicle equipment. These are as follows:

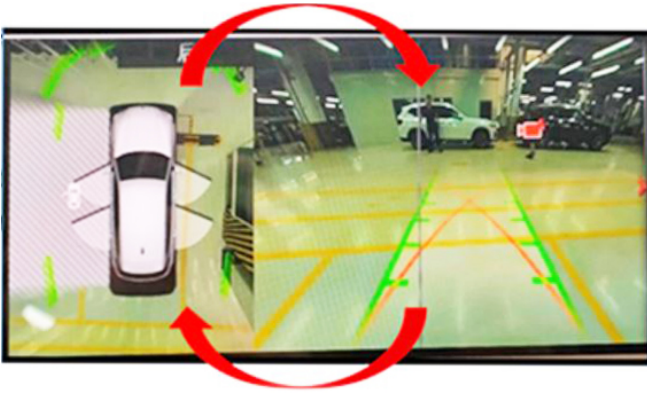
A. Vehicle(s) equipped with option 6U3 (Live Cockpit Pro - incl. Navi): When shifting into reverse, the rearview image and the Surround view (top view) image in the CID (Central Information Display) **may be swapped**. Follow procedure "A" below.



Picture 1.

The images are displayed in the **correct image position** on the CID for vehicles equipped with option code 6U3.

Picture 2.



Shows a possible failure in vehicles equipped with option 6U3.

The top view and rearview images are **incorrectly displayed** in the wrong position (swapped) on the CID.

Note: The camera icon is in the correct location, however it seems out of place due to wrong image location.

B. Vehicle(s) without option 6U3: When shifting into reverse, the concern is that the CID is blank or there's a black screen (no images are displayed). Follow procedure "B" below.



Picture 3.

Shows the **correct image display** for vehicles without option code 6U3.

Note: The correct image layout for vehicles without option code 6U3 is opposite to the layout for vehicles with option code 6U3 (seen in Picture 1 above).



Picture 4.

Shows the black screen (no camera image displayed) for vehicles without option code 6U3.

CAUSE

Software coding error in the ICAM control unit with Integration Level-

- S15A-19-11-555 to S15A-20-07-565
- S18A-19-11-565 to S18A-20-07-565

CORRECTION

Encode the ICAM using ISTA 4.27.1x or higher (released December 2020).

Target I-levels:

- S15A-20-11-542 or higher
- S18A-20-11-542 or higher

PROCEDURE

Note: Check vehicle equipment option in AIR before starting.

Depending on the vehicle options, follow procedure “A” for vehicles with option 6U3 or procedure “B” without option 6U3

A. Vehicle(s) equipped with SA 6U3 (Live Cockpit Pro - incl. Navi; aka MGU (Media Graphics Unit)):

1. Select reverse gear and check that the camera image is displayed in the CID.
2. If the camera image is displayed in the CID (reference picture 3 in Situation above), no further repairs are required.
3. Only if the CID is blank or black (reference picture 4 in Situation above – camera images are not displayed) should the remaining steps listed below be completed.
4. Connect the vehicle to ISTA 4.27.1x or higher.
5. Start a new programming session, go to Advanced Tab.
6. Select **all** control units for encoding.
7. Calculate and accept measures plan.
8. Once the encoding/programming is completed, follow the rework list.
9. Depending on the rework list, if necessary, perform vehicle test and delete the error memory (faults).
10. Allow the vehicle to sleep for 5 minutes.
11. Reassess the vehicle.
Note: Camera image in the CID must match the picture 1 seen in the situation above.
12. If the image does not match picture 1, then recode the ICAM by repeating steps 5 – 9 above.

B) Vehicle(s) equipped without SA 6U3:

1. Visually check and compare the camera image in the display to picture 3 above in the situation.
2. If the camera image is displayed in the CID match picture 3, then no further repairs are required.
3. If the CID is blank or black and the camera image is not displayed, only then should the steps listed below be completed.
4. Connect the vehicle to ISTA 4.27.1x or higher and start a new programming session.
5. Then go to “Advanced Tab”.
6. Select **all** control units for encoding.
7. Calculate and accept measures plan.
8. Once the encoding/programming is completed, follow the rework list.
9. Depending on the rework list, if necessary, perform vehicle test and delete the error memory (faults).
10. Allow the vehicle to sleep for 5 minutes.
11. Reassess the vehicle.
Note: Camera image must be displayed in the CID as shown in picture 3 seen in the situation above.
12. If the CID is blank or black and the camera image is not displayed, then recode the ICAM by repeating steps 5 – 9 above.

Always connect a BMW-approved battery charger/power supply ([SI B04 23 10](#)) when performing programming.

For information on programming and coding with ISTA, refer to CenterNet / TIS / Technical Documentation / Programming and Diagnostics / Programming Documentation.

PARTS

No parts are required.

WARRANTY INFORMATION

During this workshop visit, the affected vehicle may also show one or more programming and encoding Technical Campaign repairs open, the programming and encoding procedure may only be invoiced one time.

Select one of these open Technical Campaigns to perform and submit for updating the vehicle to the required I-level or higher.

Please be sure to also perform any additional work (before and/or after) the selected campaign or other campaign repairs require and/or close the remaining open programming and encoding Technical Campaign repairs as outlined in the corresponding Service Information Bulletin.

Reimbursement for this Service Action will be via normal claim entry utilizing the applicable work package information below that applies:

[Defect Code: ---]

Completion before the first vehicle delivery to a customer or the vehicle is already in the workshop

Work Pkg	Labor Operation	Description (Plus work)	Labor Allowance
# 1	00 70 753	Visual inspection for correct image layout in CID (coding not required).	3 FRU
Or			
#2	00 70 754	Visual inspection for correct image layout in CID before and after ICAM coding (includes connecting an approved battery charger/power supply and performing a vehicle test).	9 FRU
Or:			
#3	00 70 755	Visual inspection for correct image layout in CID before and after ICAM coding, recode and recode camera system (includes connecting an approved battery charger/power supply and performing a vehicle test). Re-check.	15 FRU
Or			
# 4	00 70 756	Programming and encoding the vehicle control units was performed in conjunction with another campaign/repair prior to or during this workshop visit (vehicle is already at the specified Target integration level or higher, no repair is necessary)	1 FRU

Or:

Work Pkg	Labor Operation	Description (Main work)	Labor Allowance
# 5	00 70 223	Visual inspection for correct image layout in CID (coding not required).	5 FRU
Or:			
# 6	00 70 224	Visual inspection for correct image layout in	10 FRU

		CID before and after ICAM coding (includes connecting an approved battery charger/power supply and performing a vehicle test).	
Or			
# 7	00 70 225	Visual inspection for correct image layout in CID before and after ICAM coding, recode and recode camera system (includes connecting an approved battery charger/power supply and performing a vehicle test). Re-check.	17 FRU
Or			
# 8	00 70 226	Programming and encoding the vehicle control units was performed in conjunction with another campaign/repair prior to this workshop visit (vehicle is already at the specified Target integration level or higher, no repair is necessary)	1 FRU

Only one of the flat rate labor operation codes listed above can be used for claim submission/reimbursement purposes. Also, only one Main work flat rate labor operation code can be claimed per workshop visit.

Claim Repair Comments

Only reference the SIB number and the work package (Pkg) number performed in the RO technician notes and the claim comments (For example: B66 14 20 WP 1), unless otherwise required by State law.

And, as applicable:

Alternative Mobility Solution (AMS) for Vehicle Owners (RO and Claim Comments Required)

This Recall repair qualifies for Alternative Mobility Solution (AMS) expense reimbursement, claim this item under the Defect Code noted above as follows:

Sublet Code 2 - Itemize the AMS sublet amount on the repair order and in the claim comment section.

Please refer to [SI B01 29 16](#) for additional information.

Programming and Encoding - Vehicle Control Units (RO and Claim Comments Required)

The programming procedure automatically reprograms and encodes all vehicle control modules which do not have the latest software I-level. If one or more control module failures occur during this programming procedure:

- Please claim this consequential control module related IRAP recovery procedure (when applicable as required)/repair work under the defect code listed in this bulletin with the applicable AIR labor operations.

Please explain this additional work (The why and what) on the repair order and in the claim comments section

For control module failures that occurred prior to performing this programming procedure:

- When covered under an applicable limited warranty, claim the applicable test plan and the corresponding control module-related repair work using the applicable defect code and labor operations in AIR (including diagnosis).

As applicable to your center, please refer to [SI B01 01 20](#) or [B01 07 20](#) for claiming your diagnosis work time (WT), WT and repair explanation procedures.

Reimbursement of Prior Customer-Pay Repairs (TREAD Act)

With this Safety Recall Campaign, with respect to the issue be addressed on the Affected Vehicles, a reimbursement request for a qualifying prior customer-pay repair is not likely.

However, if you should receive a reimbursement request from a customer for a repair that may qualify in addressing the issue described in this bulletin, please contact the Warranty department (include a legible copy of the invoice) through IDS by selecting Coverage, Policy, Coding Questions and Mileage Corrections. The Warranty department will respond to your inquiry accordingly.

QUESTIONS REGARDING THIS BULLETIN

Technical inquiries	Submit feedback at the top of this bulletin
Warranty inquiries	Please contact the Warranty department by either using the Live Chat that's available in the Warranty Documentation Portal or through IDS by selecting Coverage, Policy, Coding Questions and Mileage Corrections
Parts inquiries	Submit an IDS ticket to the Parts Department

Supporting Materials

[picture_as_pdf B660221_2021-BMW-MY2019-21-VariousModels-RearviewCamera-FAQ-\(22Feb2021\).pdf](#)

[picture_as_pdf B660221 Recall Notice.pdf](#)

NON-COMPLIANCE RECALL NOTICE

To: All Center Operators, Sales Managers, Service Manager, Parts Manager and Warranty Processor

RE: Recall 21V-096: Rearview Camera – B66 02 21

BMW AG is conducting a Voluntary Non-Compliance Recall (effective February 22, 2021) on certain Model Year 2019-2021 BMW vehicles that were produced between October 12, 2017 and November 26, 2020.

Please be reminded that it is a violation of federal law (The Safety Act) for you to sell, lease or deliver any new motor vehicle covered by this notification until the recall repair has been performed. This means that centers may not legally deliver new motor vehicles to consumers until they are fixed or use/sell replacement equipment/parts subject to this recall. Note also that substantial civil penalties apply to violations of the Safety Act.

Also, you should not sell, lease or deliver any Certified Pre-Owned or used vehicles subject to a safety recall until the repair is completed.

Please follow any special instructions that we provide to you for the return or disposition of recall parts.

We appreciate all your assistance with this Recall.

Non-Compliance Recall 21V-096
Rearview Camera
Model Year 2019-2021
BMW 3 Series, 4 Series, 5 Series, 7 Series, 8 Series
BMW X3 SAV, X4 SAC, X5 SAV, X6 SAC, X7 SAV
Initial Release: 02/22/2021

Q1. Which BMW Group models in the US are potentially affected by this Safety Recall?

Certain Model Year 2019-2021 BMW 3 Series, 4 Series, 5 Series, 7 Series, 8 Series, and, X3 SAV, X4 SAC, X5 SAV, X6 SAC, and X7 SAV models in the US are potentially affected.

Q2. What is the specific issue?

In certain cases, the rearview camera image may not meet a Federal requirement. When shifting into Reverse, a small portion of the rearview image may be slightly obscured, or the screen may not illuminate.

Q3. Why are other models / vehicles not included in this Safety Recall?

Other models do not contain the same rearview camera software.

Q4. Can I continue to drive my vehicle?

Yes. Please contact an authorized BMW center to have this important Non-Compliance Recall performed as soon as possible. If you are not the only driver of this vehicle, please advise all other drivers of this important information.

Q5. Can I determine if this issue exists in my vehicle?

When shifting into Reverse, if the rearview camera image is slightly obscured or does not illuminate, your vehicle may be experiencing this issue.

Q6. How did BMW Group become aware of the issue?

BMW Group became aware of the issue through our quality control procedures.

Q7. How will I be informed of this Safety Recall?

Letters will be mailed to owners in April via First Class mail advising them of this Non-Compliance Recall and requesting them to schedule an appointment with an authorized BMW center to have the remedy performed. Owners can locate their nearest authorized BMW center at www.bmwusa.com/dealer. To ensure BMW has the most recent contact and vehicle information, owners should register their vehicle at www.bmwusa.com/myBMW. Registration is free and will give them access to factory-initiated campaigns and other information specific to their BMW.

Q8. How will my vehicle be repaired?

The rearview camera software will be reprogrammed for free.

Q9. Do I have to wait for my letter to have my vehicle serviced?

No. Please contact an authorized BMW center to have this important Non-Compliance Recall performed. For the latest updates to this Non-Compliance Recall, please visit www.bmwusa.com/recall.