

**UPDATED June 7, 2024 – Using M-MDS to reprogram vehicle and added labor ops**

## Safety Recall 4621B – PLG Reprogramming and replacement

Table of Contents - Links in this document are provided for all steps below

1. VEHICLE INSPECTION PROCEDURE:
2. eMDCS System - Warranty Vehicle Inquiry Results:
3. Section A: Flowchart
4. Section B: Repair Procedure
  - PLG Control Unit Reprogramming with M-MDS using MDARS
5. Section C. Replacement of PLG Drive Unit
6. Section D. Campaign label installation

### Vehicle Inspection Procedure

Verify that the vehicle is within the following ranges:

Models	Subject VIN range	Subject production date range
2020-2021MY CX-30	3MVDM**** LM 100116 - 140310 3MVDM**** MM 200017 - 232944	From October 1, 2019 through November 24, 2020

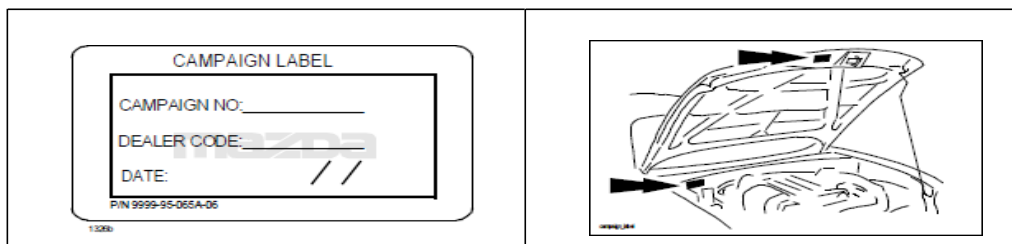
The asterisk symbol "\*" can be any letter or number.

- If the vehicle is within the above ranges, proceed to **Inspection and Repair Procedure**
- If the vehicle is not within the above ranges, return vehicle to the customer or inventory.

Perform a Warranty Vehicle Inquiry using your eMDCS System and inspect vehicle for Campaign Label Recall 4621B attached to the vehicle's hood or bulkhead. Refer to eMDCS System - Warranty Vehicle Inquiry Results table below.

NOTE: Be sure to verify Recall number as the vehicle may have multiple Recall labels.

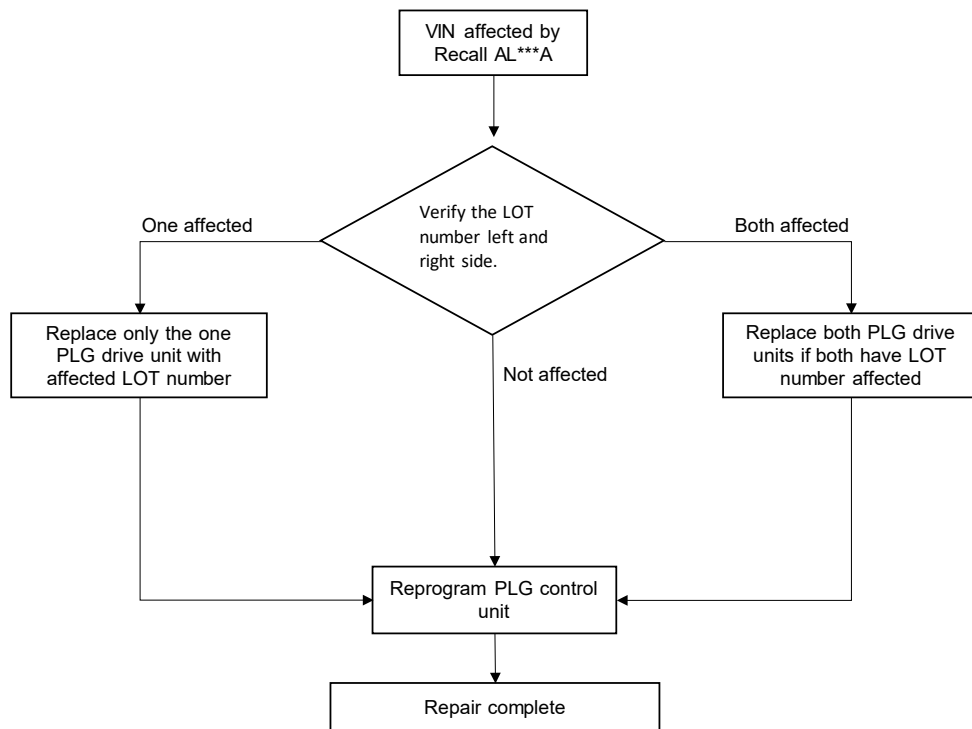
### eMDCS System - Warranty Vehicle Inquiry Results:



If eMDCS displays:	Campaign Label is:	Action to perform:
RECALL 4621B OPEN	Present	Email Dealer Recall Help or Contact Warranty Hotline at (877) 727-6626 option 3 to update vehicle history.
	Not present	Proceed to "2. REPAIR PROCEDURE".
RECALL 4621B CLOSED	Present	Return vehicle to inventory or customer.
	Not present	Proceed to "3. CAMPAIGN LABEL INSTALLATION".

## A. Flowchart

Follow the procedure to reprogram the module first before replacing any affected liftgate



-----END OF SECTION A-----

## B. Repair Procedure Lot Identification and Reprogramming

First, verify the LOT No. of the PLG drive units. If affected they may need replaced, one side or both sides. If affected, order parts and do reprogramming first then move to Section C. before replacing the PLG Drive Units.

1. Open the Liftgate and write down the 8 Digit Lot Number
2. There is a number (9 or 0 indicates year) followed by a letter (Indicates month) and 6 numbers. Input all 8 digits into the Lot Number calculator or an error will occur. Note: If there is no number before the letter, input 9 (2019 production). Example : G050032 →9G050032
3. If the result is Not Affected replacement is not required. Reprogram power liftgate module under SSPC5/4621B. This will be 96% of the vehicles.
4. If the result is Affected, write down the affected side Left, Right, or Both, Contact Dealer Recall Help with the Affected Lot number. They will verify and order the part. Proceed to M-MDS reprogramming and then to Replacement of the PLG Drive Unit "C".

The diagram illustrates the location of the PLG Drive units (L and R) and provides close-up images of the LOT numbers on the liftgate modules. The LOT numbers are 9f230086 for the left side and 0k100001 for the right side.

Location	LOT (8-digit half-width input)	Result	Location	LOT (8-digit half-width input)	Result
L	9f230086	NOT AFFECTED	R	0k100001	NOT AFFECTED

**NOTE: There are two calculators that need to be used for this repair.**

1. Use the 4621B LiftGate Lot Inspection Check Sheet for the Lot inspection only.
2. Use the Repair Calculator to determine which repairs apply to the vehicle, any combination of 4621B, SSPC5 and/or SSPC4.

## PLG Control Unit Reprogramming with M-MDS using MDARS

### CAUTION PLEASE READ BEFORE REPAIR

#### Service caution during reprogramming for ECU(s)

During reprogramming, connect battery charger to the vehicle to stabilize voltage fluctuation. If missing, it may cause damage to ECUs due to decreasing voltage.

7<sup>th</sup> generation vehicle will control to turn on headlight forcibly during reprogramming due to change CAN communication. **Please use the "Reflash" setting in the charger, which will keep the voltage stable. The setting voltage must be between 12 -13V.**

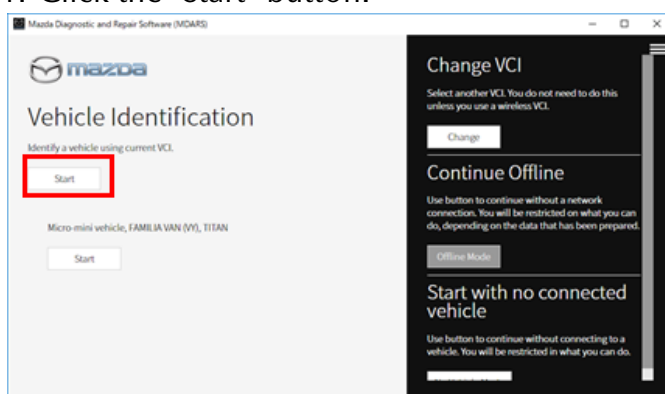


### Vehicle Identification

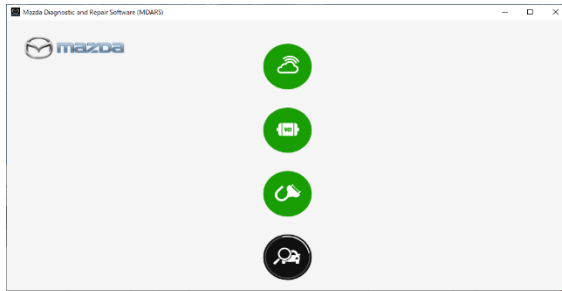
Connect MDARS with the DLC cable and VCM- II to the vehicle, then set the ignition to the ON position.

**CAUTION:** Connect the DLC cable and the VCM- II to the vehicle with the ignition OFF. The CAN bus line might detect some noise and it might cause a diagnostic error when connecting the DLC cable with the ignition ON.

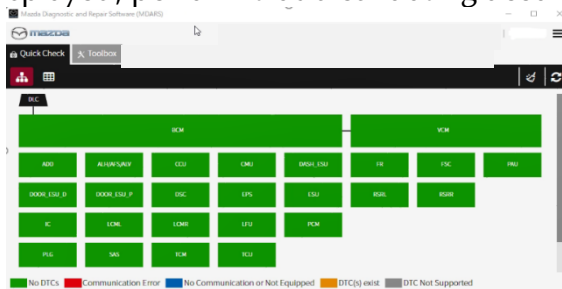
1. Click the "Start" button.



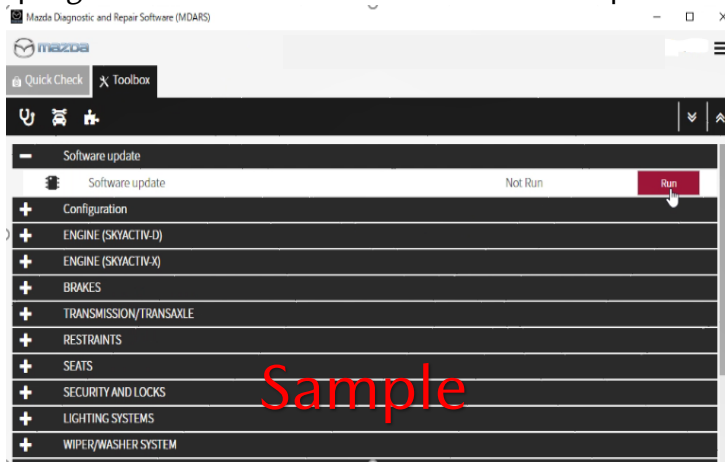
- The Vehicle Identification process will start and automatically inspect every connection and then collect the vehicle information.



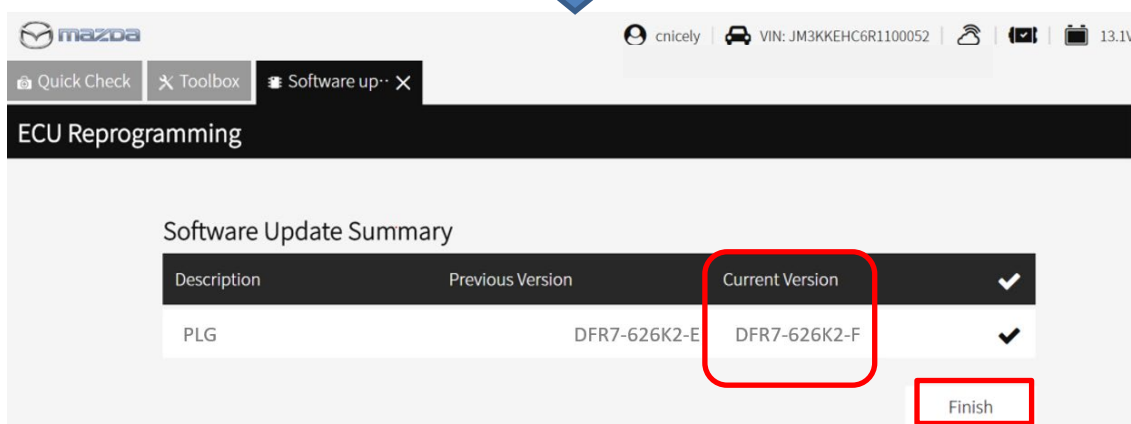
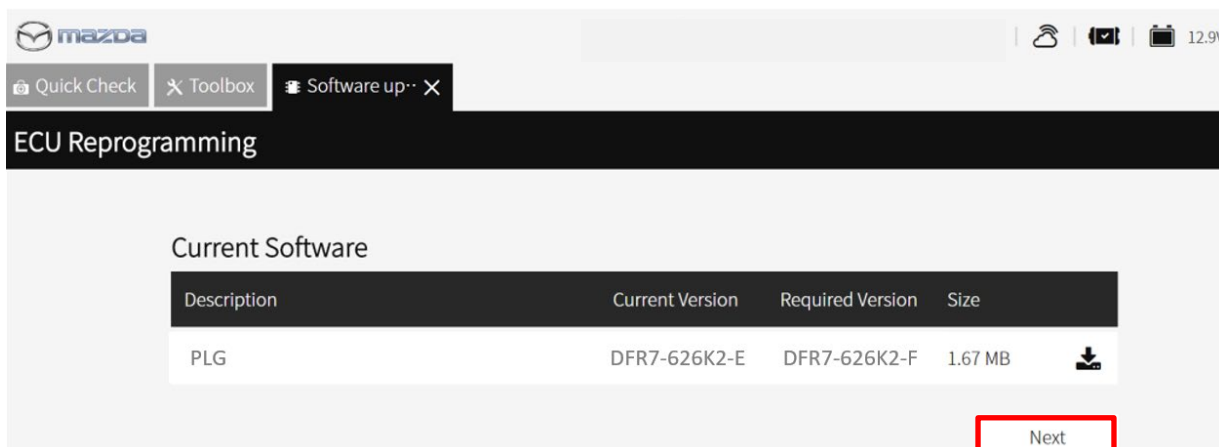
- Verify the DTC according to the directions on the quick check screen. If any DTCs are displayed, perform troubleshooting according to the corresponding DTC inspection.



- Reprogram PLG as below: Select 'Software update' on 'Toolbox' tab. Select 'Run'.



- Select required module on 'ECU Reprogramming' screen. Start Reprogramming. Choose "PLG". **NOTE: If software is already the latest, MDARS does not reprogram the subject ECU and this is normal behavior. Continue to the next step.**
- After completion of software update, the previous and current software version are shown. Check current version at "Calibration File information" below. Then, click on "Finish" to exit the ECU reprogramming.



### Calibration file information

**NOTE: If the calibration file has the suffix in the table or later, the unit is already modified. continue with the next step.**

Module	Target ECU (Hardware #)	Target Software file #	Reprogramming Time (min.)
PLG	DFR7-626H0	DFR7-626K2-F (or later version)	5

7. Verify the DTC and clear the DTC if any DTCs are stored. The DTC P2610:00 may be stored. In this case, switch to the ignition on (Engine-on) and run by idle 10 seconds then it can be cleared the DTC P2610:00.
8. Verify the repair by starting the engine and making sure there is no MIL illumination or abnormal warning lights present. If any DTCs should remain after performing DTC erase, diagnose the DTCs according to the appropriate troubleshooting section of the Workshop Manual.
9. Disconnect the MDARS from the DLC-2.

-----END OF SECTION B-----

## C. Replacement of the PLG Drive Unit

### CAUTION AND WARNINGS:

- Please review the supplemental video for this repair.
- Remove the PLG drive unit securing band using two people, one person supports the liftgate. If the PLG drive unit securing band is removed without supporting the liftgate, it may fall off or close suddenly and cause injury.

REMOVE AND REPLACE WITH THE NEW PLG DRIVE UNIT (ONE SIDE OR BOTH SIDES) Following the MGSS Procedure: [POWER LIFTGATE \(PLG\) CONTROL MODULE REMOVAL/INSTALLATION](#)

**AFTER-POST REPAIR CHECK - Make sure the headliner has no damage (or wrinkle) around assist handle, or interference with the trim after installation.**



-----END OF SECTION C. MOVE TO SECTION D.-----

## D. CAMPAIGN LABEL INSTALLATION:

Fill out a black "Campaign Label" (9999-95-065A-06) with Campaign No: "4621B", your dealer code, today's date.

CAMPAIGN LABEL

CAMPAIGN NO: \_\_\_\_\_

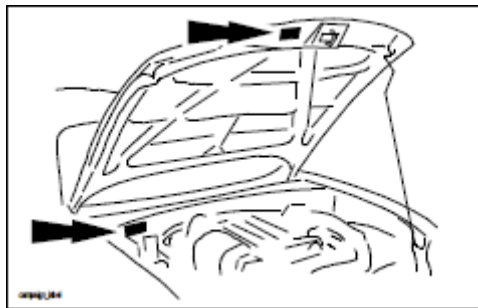
DEALER CODE: \_\_\_\_\_

DATE: \_\_\_\_/\_\_\_\_/\_\_\_\_

PIN 9999-95-065A-06

132b

1. Affix it to the hood or bulkhead as shown:



2. Return the vehicle to customer.

**END OF REPAIR PROCEDURE**