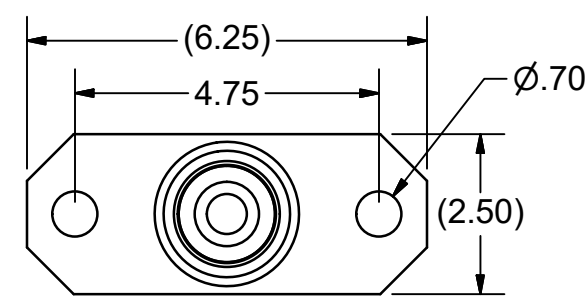
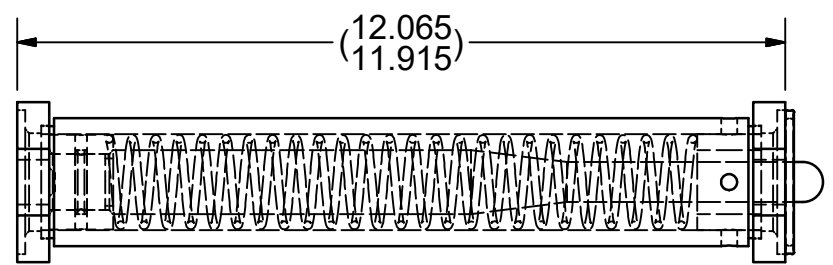
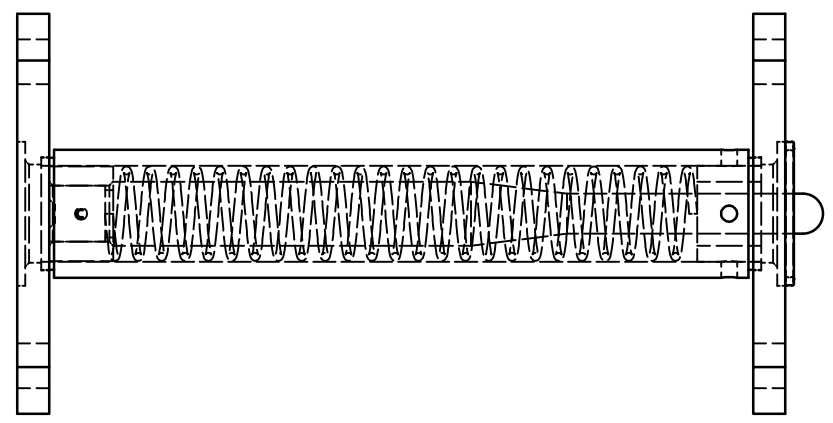
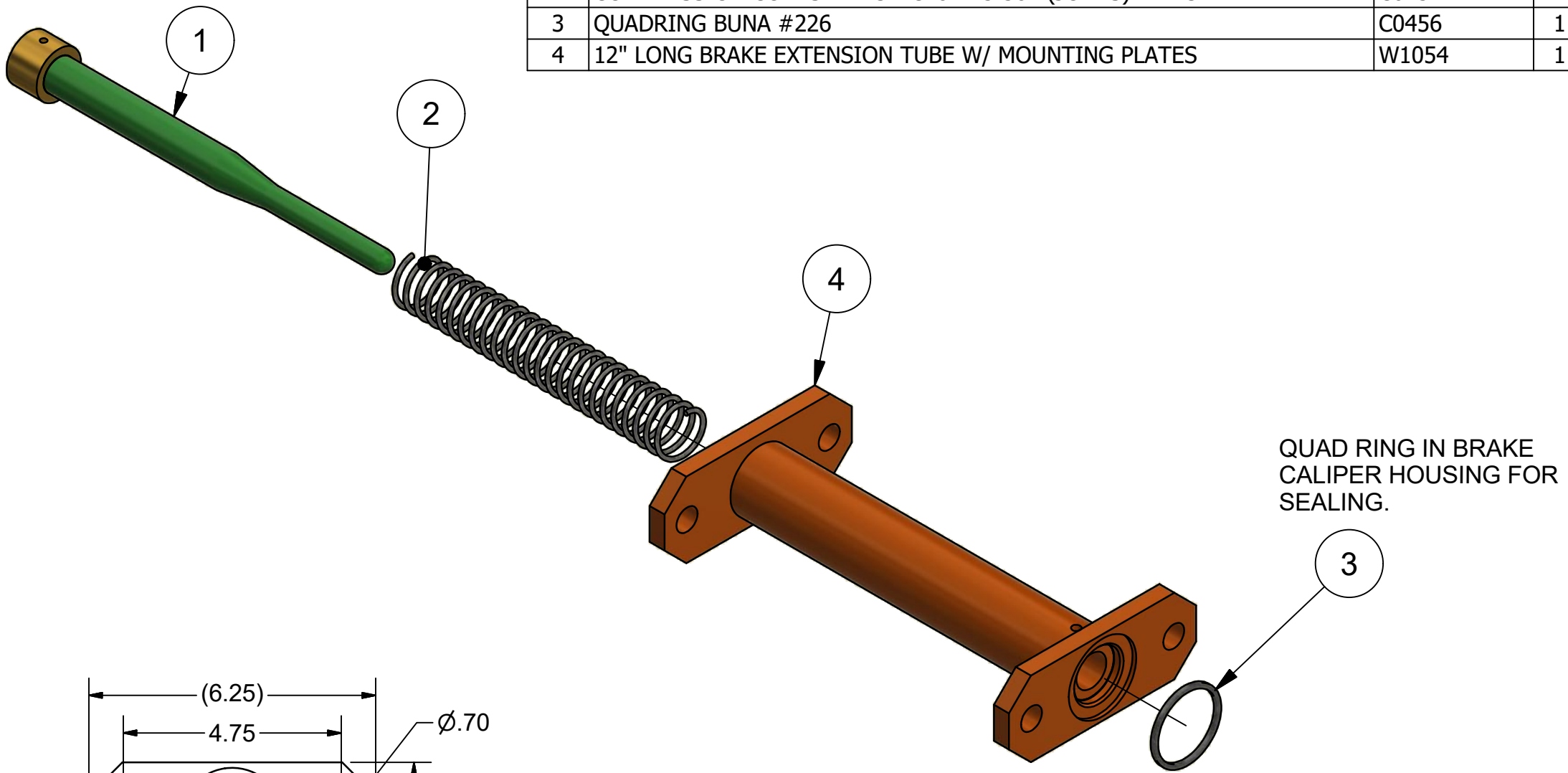


**DISCLAIMER:** CUSTOMER IS RESPONSIBLE FOR PROPER SEALING AGAINST WATER INTRUSION FROM DISC BRAKE EXTENSION TUBE TO CALIPER AND TO BRAKE CHAMBER. CUSH ASSUMES NO WARRANTY LIABILITY FROM WATER INTRUSION INTO DISC BRAKE CALIPER HOUSING. PER revF SHEET 3 SUGGESTION


PARTS LIST			
ITEM	DESCRIPTION	PART NUMBER	QTY
1	12" BRAKE EXTENSION ROD W/ BUSHING INSTALLED AND END MACHINED	A0102	1
2	COMPRESSION COIL SPRING #C48-125-384 (JONES) 12"LG	C0452	1
3	QUADRING BUNA #226	C0456	1
4	12" LONG BRAKE EXTENSION TUBE W/ MOUNTING PLATES	W1054	1

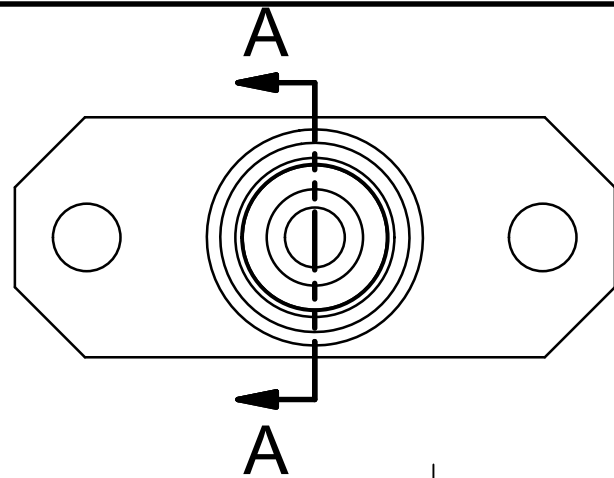


QUAD RING IN BRAKE CALIPER HOUSING FOR SEALING.

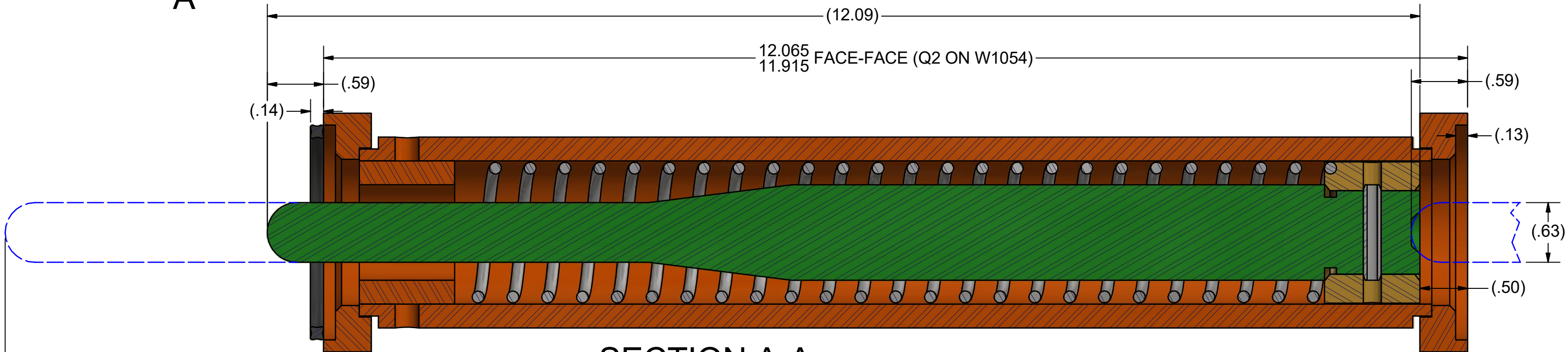
NOTES:  
 ASSEMBLY NOTE:  
 1. LUBRICATE W/ ANTI-SEIZE ON INSIDE OF HOUSING 4" DEEP FROM CHAMBER SIDE, NO CONTACT WITH SEALING SURFACES  
 2. PAINT SPRING (C0452) W/ BLACK SPRAY PAINT AND LET DRY BEFORE ASSEMBLY  
 SHIPPING NOTE:  
 3. PACK 1 QUADRING (C0456) IN A BAG, OR BULK PACKAGE PER ORDER  
 QC NOTE:  
 4. SEE WI-6620\_K0590-12 & WI-6520 (REF WI-6622)  
 5. QC TO CHECK AND RECORD DATA IN WIX-6620-K0590-12

DCN#	REV	REVISION DESCRIPTION	DATE	BY	CHK	APP
	F	ADDED SHEET 3, REMOVED 1 QUADRING AND BOTH GASKETS	8/14/18	DJW		
	E	ADDED 2x C0720	8/8/18	DJW		
	D.1	UPDATED TOLERANCES PER Cpk STUDY	7/19/18	DJW		

DRAFTSMAN: DWALKER	7/16/2018	TITLE:				
CHECKED: CHK		<b>12" LONG DISK BRAKE CHAMBER EXTENSION KIT</b>				
RELEASED: APP						
WEIGHT: N/A						
MATERIAL:		TOLERANCE UNLESS OTHERWISE STATED: .XX = +/- .06      FRACTIONS = +/- 1/16 .XXX = +/- .031      ANGLES = +/- 1°	Nixa, MO. USA PHONE: 417-724-1239 www.cushcorp.com			
ALL OF THE INFORMATION SHOWN HEREIN IS THE INTELLECTUAL PROPERTY OF CUSH CORP AND IS SUBMITTED ONLY ON A CONFIDENTIAL BASIS. THE RECIPIENT AGREES THAT NO DISCLOSURE OF THIS INFORMATION WILL BE MADE TO A THIRD PARTY WITHOUT WRITTEN CONSENT OF CUSH CORP.		PROJECT NO: <b>11176</b>		SHEET: <b>1</b> OF <b>3</b>	SCALE: <b>A-SIZE: NTS</b> <b>B-SIZE: 1/2</b> <b>D-SIZE: 1/X</b>	REV: <b>F</b>



**DISCLAIMER:** CUSTOMER IS RESPONSIBLE FOR PROPER SEALING AGAINST WATER INTRUSION FROM DISC BRAKE EXTENSION TUBE TO CALIPER AND TO BRAKE CHAMBER. CUSH ASSUMES NO WARRANTY LIABILITY FROM WATER INTRUSION INTO DISC BRAKE CALIPER HOUSING.  
PER revF SHEET 3 SUGGESTION



**SECTION A-A  
SCALE 1 / 1**

- Q1**
- QC CHECK TO PUSH INNER PIN SO END STICKS OUT 2.7"
  - IF PASS Q1 TEST APPLY CUSH SERIAL TAG & LOG IN QC BOOK

DCN#	REV	REVISION DESCRIPTION	DATE	BY	CHK	APP
	F	ADDED SHEET 3, REMOVED 1 QUADRING AND BOTH GASKETS	8/14/18	DJW		
	E	ADDED 2x C0720	8/8/18	DJW		
	D.1	UPDATED TOLERANCES PER Cpk STUDY	7/19/18	DJW		

DRAFTSMAN: DWALKER 7/16/2018  
 CHECKED: CHK  
 RELEASED: APP  
 WEIGHT: N/A  
 MATERIAL:

TITLE:  
**12" LONG DISK BRAKE CHAMBER  
 EXTENSION KIT**

ALL OF THE INFORMATION SHOWN HEREIN IS THE INTELLECTUAL PROPERTY OF CUSH CORP AND IS SUBMITTED ONLY ON A CONFIDENTIAL BASIS. THE RECIPIENT AGREES THAT NO DISCLOSURE OF THIS INFORMATION WILL BE MADE TO A THIRD PARTY WITHOUT WRITTEN CONSENT OF CUSH CORP.

TOLERANCE UNLESS OTHERWISE STATED:  
 .XX = +/- .06      FRACTIONS = +/- 1/16  
 .XXX = +/- .031      ANGLES = +/- 1°

PROJECT NO:	SHEET:	SCALE:	REV:
11176	2 OF 3	A-SIZE: NTS B-SIZE: 1/2 D-SIZE: 1/X	F



Nixa, MO. USA  
 PHONE: 417-724-1239  
 www.cushcorp.com

DRAWING(PART) NO:  
**K0590-12**



^ STEP 1: 1/4" BEAD IN STEP (CALIPER SIDE)



^ STEP 2: 1/8" BEAD AROUND HOLE (CALIPER SIDE)



< REF OF SQUISH PATTERN (CALIPER SIDE)

# CUSH RECOMMENDED SEALING NOTES

**DISCLAIMER:** CUSTOMER IS RESPONSIBLE FOR PROPER SEALING AGAINST WATER INTRUSION FROM DISC BRAKE EXTENSION TUBE TO CALIPER AND TO BRAKE CHAMBER. CUSH ASSUMES NO WARRANTY LIABILITY FROM WATER INTRUSION INTO DISC BRAKE CALIPER HOUSING.  
PER revF SHEET 3 SUGGESTION

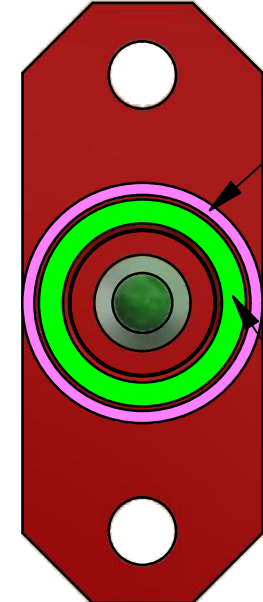
v STEP 1: 1/8" BEAD IN STEP (CHAMBER SIDE)



v REF OF SQUISH PATTERN (CHAMBER SIDE)



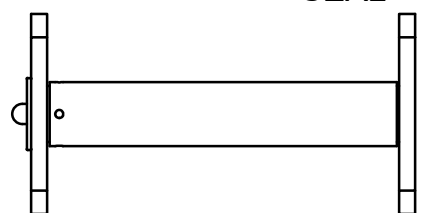
ORING TURNED OFF FOR VISIBILITY



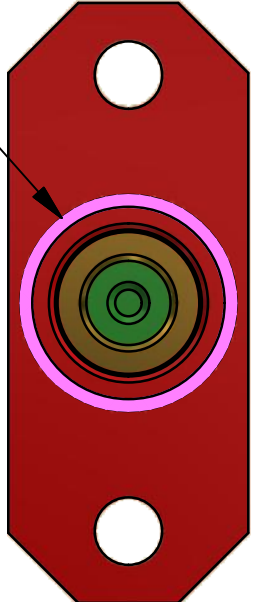
THIS IS CALIPER SIDE

1/8" BEAD AROUND HOLE FOR SEALING

1/4" BEAD IN STEP TO SEAL AGAINST QUADRING IN CALIPER HOUSING



1/8" BEAD IN STEP TO SEAL AGAINST CHAMBER SEAL



THIS IS CHAMBER SIDE

	F	ADDED SHEET 3, REMOVED 1 QUADRING AND BOTH GASKETS	8/14/18	DJW		
	E	ADDED 2x C0720	8/8/18	DJW		
	D.1	UPDATED TOLERANCES PER Cpk STUDY	7/19/18	DJW		
DCN#	REV	REVISION DESCRIPTION	DATE	BY	CHK	APP

DRAFTSMAN: DWALKER	7/16/2018
CHECKED: CHK	
RELEASED: APP	
WEIGHT: N/A	
MATERIAL:	

TITLE:  
**12" LONG DISK BRAKE CHAMBER EXTENSION KIT**

ALL OF THE INFORMATION SHOWN HEREIN IS THE INTELLECTUAL PROPERTY OF CUSH CORP AND IS SUBMITTED ONLY ON A CONFIDENTIAL BASIS. THE RECIPIENT AGREES THAT NO DISCLOSURE OF THIS INFORMATION WILL BE MADE TO A THIRD PARTY WITHOUT WRITTEN CONSENT OF CUSH CORP.

TOLERANCE UNLESS OTHERWISE STATED: .XX = +/- .06      FRACTIONS = +/- 1/16 .XXX = +/- .031      ANGLES = +/- 1°			
PROJECT NO: <b>11176</b>	SHEET: <b>3</b> OF <b>3</b>	SCALE: <b>A-SIZE: NTS</b> <b>B-SIZE: 1/2</b> <b>D-SIZE: 1/X</b>	REV: <b>F</b>

Nixa, MO. USA  
PHONE: 417-724-1239  
www.cushcorp.com

DRAWING(PART) NO:  
**K0590-12**

FOR SEALING EXTENSION TUBE USE PERMATEx "THE RIGHT STUFF" (#85224)  
1. ALL MATING FACES SHOULD BE CLEANED AND DRIED (BRAKE EXTENSION TUBE, CALIPER MOUNT, AND BRAKE CHAMBER)  
2. USE A 1/8"-1/4" CONTINUOUS BEAD AS SHOWN ABOVE  
3. ASSEMBLE PARTS WITHIN 5 MINUTES  
READ AND FOLLOW DIRECTIONS ON CAN FOR PROPER INSTALLATION.  
VIEW TECHNICAL DATA SHEET FOR MORE INSTRUCTIONS AND NOTES  
[https://www.permatex.com/tech-documents-results/?doc\\_num=85224](https://www.permatex.com/tech-documents-results/?doc_num=85224)